



**NEV KANE**  
Real Estate since 1953

**PROPERTIES SELLING FAST!**  
Call us today for a Free Appraisal  
**07 5446 7333** nevkane.com.au

# Mandates bite. Show faces axe

## SOS: President launches petition to 'Save Our Show'

THE Sunshine Coast Agricultural Show at Nambour Showgrounds faces the real possibility of cancelling or postponing the 2022 event because of the massive financial impact of State Government health mandates.

As it stands people must be double-vaxed in order to attend a show on government-owned Showgrounds, even though the Show is largely an outdoor event.

Sunshine Coast Show President Rowan O'Hara has launched a petition against mandates which he said "discriminate against agricultural shows".

He said the current rules added such a burden the Sunshine Coast Agricultural Show management committee must decide whether the event, scheduled for June 10-12 at Nambour Showgrounds, may be postponed or cancelled in 2022. "We are hoping to postpone rather than cancel, and whilst we have a meeting this week, we are hoping to put off making a final decision until the coming weeks. It really is quite a hard spot to be in," Mr O'Hara said.

Mr O'Hara said vaccine mandates placed increased pressure on security arrangements and lowered workforce, exhibitors and patronage numbers. "Eighty percent of Queensland shows that should have run in 2022 up to now, have been postponed or cancelled due to the mandates," he said.

"Many other shows are considering cancelling, or if they do run, it will be at a very large financial loss. Toowoomba alone, due to run next weekend (March 25, 26, 27), will run at a loss well over \$100,000. The Sunshine Coast Show simply cannot afford to do this."

Mr O'Hara questioned the consistency of contradictory rules that changed depending on the type of event. "In reality, cricket, horse events,

evacuation centres, football games, markets – regardless of size or what they are selling – can be held on Showgrounds without vaccination status being noted. The current mandate states that all shows must be vaccinated events - yet all these other activities can be held on the same grounds within days of each other.

"The requirement to vet all who attend a show causes extra strain our manpower, which impedes our income and profitability. We work on a shoestring budget manned by volunteers and with less patrons, less stall holders, and less income, shows will run at a loss and therefore will not be sustainable."

### Stallholder numbers fall 30-40 percent

Mr O'Hara said stall holder numbers were down by 30 to 40 percent due to the vaccination mandates which were also having a big impact on entrant and competitor numbers.

He said shows were a crucial element for maintaining community spirit in regional and rural towns. Local motels and accommodation houses, restaurants, grocery shops and local butchers, bakeries and food and drink suppliers would suffer, as would local service clubs who use the Show as a fundraiser to put money back into the community.

"Churches and schools raise money by providing additional carparking when the Show is on," he said. "These are just some of the local businesses and organisations in Nambour who will be directly affected if the Sunshine Coast Show does not go ahead this year. This is a very deep blow."

### Sign the petition

► Sign the petition via: [www.parliament.qld.gov.au/Work-of-the-Assembly/Petitions/](http://www.parliament.qld.gov.au/Work-of-the-Assembly/Petitions/).



Chinese dancer Wangrong Liu was one of the many performers at Nambour Forecourt Live!

## Event unites Nambour in music

NAMBOUR Forecourt Live!, The Harmony Week-themed event promoting inclusiveness, respect and a sense of belonging for everyone was held in Nambour Forecourt on Friday March 18 in a celebration of colour and sound.

Sunshine Coast Council Division 10 Councillor David Law said organisers were working towards the live events becoming monthly in future, in partnership with Andrea Kirwin, founder of Nambour business Peace Run Records & Agency.

"It's an activation of the forecourt, which has been beautifully refurbished by council,"

Ms Kirwin said.

With plenty of seating, grassed areas to roll out a picnic mat and shady trees, the area was canopied by festoon lighting to provide an amazing space for people to relax, have fun and socialise. The program involved sharing songs from different countries, as well as multicultural dances, a fashion show and guest speakers. The Forecourt is in front of Council's Eddie De Vere Building, corner of Currie and Bury Streets.

► More pics [www.sunshinevalleygazette.com.au](http://www.sunshinevalleygazette.com.au)



**CALOUNDRA SCRAP METAL**

All cars, trucks, machinery

Removed CASH for some

Scrap metal bins supplied

**Caloundra Scrap Metal**  
**1300 132 013**



**SUNSHINE STEERING**  
*Straight up front*



RTA No. AU49451

**David & Tina Ledger** P 5478 8020  
F 5478 8850

Power Steering • Suspension • Wheel Alignments  
Child Restraints • Roadworthy Inspections  
Tyre & Balancing • All Mechanical Service & Repairs  
Air Conditioning • All Brake Repairs  
We also sell nuts, bolts and tyres.

4/27 Main St, Palmwoods, Qld 4555



**Sunstate Gearbox & Diff Service**

**Specialising in:**

- Manuals
- Differentials
- Automatics
- Tailshafts
- Transferscases
- Clutches

**OBLIGATION FREE APPRAISAL**

5 Charles Court, Kunda Park  
**Ph: (07) 5476 8911**  
[www.sunstategearbox.com.au](http://www.sunstategearbox.com.au)



**FREE UNTIL APRIL!**

\$0 Joining Fee, Training Pack + your choice of FREE Training Program!

SAVE \$300!

5441 6154 | [jetts.com.au](http://jetts.com.au)  
Nambour@jetts.com.au | Jetts Nambour



**COASTAL LANDSCAPE SUPPLIES**

07 5453 7100 18 Kerryl St, Kunda Park  
[www.coastallandscape.com.au](http://www.coastallandscape.com.au) | [kylie@coastallandscape.com.au](mailto:kylie@coastallandscape.com.au)

GET YOUR ROCKS OFF... US

**BODY LOADS ROAD BASE \$450 Delivered (10m<sup>3</sup>)**

\*Some conditions apply, only while stocks last

BARK & MULCH | SOILS | GRAVEL | PEBBLES | SAND | SANDSTONE | ROCKS | ROADBASE | TURF | TIMBER | PAVERS | PLUS MORE!



**NO ONE ELSE SELLS MORE HOMES IN NAMBOUR**

\* AS RANKED BY REALESTATE.COM.AU #1 IN NAMBOUR

OPEN 7 DAYS

5441 2511 | Cnr Howard & Queen Sts, Nambour



SCAN FOR YOUR FREE MARKET APPRAISAL

★★★★★

# SUNSHINE VALLEY Gazette

**Editorial**

If it matters to you, it matters to us. Send your news to Cameron Outridge 0409 424 487 editor@sunshinevalleygazette.com.au

**Advertising**

To advertise contact Tanya Outridge 0400 069 711 tanya@sunshinevalleygazette.com.au

**Designer**

Katie Buckley: katiebuckley@live.com

**Distribution**

10,000 copies are distributed to popular pick-up points throughout the hinterland including at Palmwoods, Woombye, Nambour, Chevallum, Eudlo, Mooloolah, Hunchy, Yandina, Maleny, Montville, Flaxton, Mapleton and Forest Glen.

**Gazette in Print, Email, Online & Facebook**

The Gazette is Printed Fortnightly & Online Always. A pdf form of the printed paper can be found on our website. Stories are also posted on Facebook, on our blog and via email to our subscribers.

**Editorial Policy**

Every endeavour is made to publish submissions but we can never guarantee that any article will definitely appear. We prioritise constructive news which strengthens the community fabric. Our broad aims are to:

- Connect the Community.
- Acknowledge Achievement.
- Back Business.

We encourage respectful & constructive debate on local issues in our letters section.

**Thanks to our Advertisers**

The Gazette is completely funded by our advertisers who make community journalism possible. Without them, there would be no Gazette. Please support them and let them know you found them in the local paper.

## Homes for the homeless set foundation for men's futures

'More than just a roof over their heads'

MEN living on the streets in Nambour will soon have a place they can call home.

The Shack in Nambour on Wednesday (March 16) officially opened the only men's housing project on the Sunshine Coast.

Designed to integrate homeless men into the community, Gen One includes a community hub for its residents as well as six fully self-contained units including one with disability access, as well as a unit for an on-site manager.

The Shack Pastor Dale Dowler said the project – made possible with the help of \$500,000 in federal funding – would make a huge difference in the lives of the men who would pass through the facility.

He said, while the Shack has been providing services to the community's homeless and vulnerable for over 20 years, this was the organisation's first housing project.

He said Homelessness was a complex problem and Gen One was not only about providing a roof over men's heads.

"The housing provides a safe space. Gen One will provide wrap-around programs that will provide individualised services to help men transition from hardship and isolation back into active engagement in the community with services including counselling and assistance with training and gaining employment."

**Local input helps build dream**

The Gen One units have been purpose-built and are a result of collaboration between local designer Graham Green and builder Al and Julie Lennox.

Their work, combined with invaluable support from government agencies, suppliers and local trades people, has created individual self-contained spaces, as well as a community hub where residents can come together and access services.

Pastor Dowler said the residents would also be able to access the Shack's other services and programs, which currently assist more than 14,000 people a year.

Pastor Dowler said the site of the new centre was provided by the Lanham family who had been Nambour stalwarts for more than 110 years.

"The Lanham's and in particular the family's matriarch Peggy Lanham have been committed to the local community for more than a century and that is why we are proud to honour Peggy and the Lanham family by naming the main entry into Gen One, Peggy Lane," Pastor Dowler said.

**Lanham family backs project**

Tim and David Lanham, who continue to be part of the Sunshine Mitre 10 group as well as representing the Lanham Family Trust, said they were touched to have their mother honoured as part of the project.

"The Nambour community is part of our family's history, and we are proud to be part of this project," Tim said. "Mum and Dad would be so



From left, Pastor Dale Dowler, Ted O'Brien and Paul, Luke and Tim Lanham, whose family donated the land for the project. The entrance to Gen One was named Peggy Lane in honour of Peggy Lanham.



One of the self-contained units. Picture Courtesy: Craig Burrows - iPH Creative Studios



Pastor Dale Dowler with Dean who will be one of the first residents.



Compact but comfortable ... inside a unit. Picture Courtesy: Craig Burrows - iPH Creative Studios

pleased to see the legacy left by their passing being used to support some of our community's most vulnerable."

Member for Fairfax Ted O'Brien said he was delighted to officially open the facility.

"Seeing this project built is vitally important to men who need help, and it's a prime example

of what can be achieved by local leadership with government support," Mr O'Brien said.

"Knowing the extraordinary kindness and capability of Dale and his team at the Shack, I am confident that this purpose-built shelter will be life-changing for countless men who find themselves in trouble."

**MORNINGSTAR DIGITAL**

**YOUR LOCAL WEB DEVELOPER**

Mention this ad for a locals discount

1300 392 542  
M11 / 65 Currie St, Nambour 4560  
www.morningstardigital.com.au

**Brady's Fruit**

FRUIT & VEGETABLE SPECIALIST  
• Wholesale & Retail •

Col & Sandy Pearce  
Ph/Fax 07 5445 9260

*Park at your leisure where shopping is a pleasure*

Woombye-Palmwoods Rd.  
Palmwoods, Q. 4555

**Earthmoving • Cranes • Trucks • Hydraulics • Attachments**

**GR FLEET SERVICES**  
DIESEL MAINTENANCE & REPAIRS

We service and repair all makes of earthmoving machinery, cranes and trucks.

From Warranty Servicing to hydraulic hose repairs we have you covered.

**FULLY EQUIPPED WORKSHOP + FIELD SERVICE**

Authorised Dealers

169 Nicklin Road, Palmwoods • 5457 3066 • grfleet.com.au • f



“Lower Woontooba” owners Louise and Jeff Tasker. The Queenslander was moved onsite in 1996 from Spring Hill.

## From weedy paddock to Open Garden in four years

WHEN they came to Montville four years ago there was nothing on their land but weedy grass.

Now, Louise and Jeff Tasker’s “Lower Woontooba” at 238 Western Avenue is one of the feature properties in this year’s Easter Open Garden Festival in Montville.

“Our’s is a very young garden,” said Jeff. “When we came here there was nothing here ... six avocado trees and about a dozen other trees dotted around, and it was covered in tough paspalum grass full of weeds. That’s been sorted by endless mowing and mowing and a spot of spraying. We haven’t the luxury of big trees. It will take another five years or so for them to grow.”

Louise said Lower Woontooba’s style was based on one of the most famous gardens in England.

“When we lived in the UK we fell in love with a garden called Sissinghurst,” said Louise. “Sissinghurst Castle Garden was created by Vita Sackville-West and her husband Harold Nicolson.

“They were famous for making ‘rooms’ in their garden. But their whole house was shabby chic. She loved this idea of every space being filled with a little plant. She was famous for the white garden and also created a hot garden.

“We’ve got five acres of garden space with another five of remnant forest,” said Jeff.

“We have borrowed from the idea of having a long border with plants each side of the stone pathway leading into the white garden.

“But we’re not too precious. If something comes up and it’s yellow, we’re all for ‘live and let live’.

“We also have what we call our sunset garden because it features the colours orange, red and yellow. And it leads on to a viewing deck.”

The property also features Louise’s artist’s studio for writing and drawing. She has just published her first children’s book, “Sugar Plum and the Christmas Tale”.



The Queenslander house was moved onsite in 1996 from Spring Hill. “It’s a 1925 home, we believe,” said Louise.

The Easter Open Garden Festival will feature three diverse Montville gardens and raise money for charity.

Gardens include:

- Kyleigh and Michael Simpson’s “The Shambles” at 85 Western Avenue Montville;
- Louise and Jeff Tasker’s “Lower Woontooba” at 238 Western Avenue Montville; and
- Rowena Cavanagh’s “Wongawilli” at 19 Manley Drive Montville.

▶ A plant stall and refreshments will be offered at The Shambles; there will also be a plant stall at Lower Woontooba. The gardens are open on Saturday 16 and Sunday 17 April from 9am to 4pm. Entry \$10 to each garden (cash only please) children free. See [www.montvillegarden.com](http://www.montvillegarden.com) and [www.facebook.com/montvillegarden](http://www.facebook.com/montvillegarden).



**The Denture Care Group**

*Sunshine Coast*

Caloundra | Maleny | Woombye



**BEFORE**



**AFTER**

**MAKE THE MOST OF YOUR HEALTH FUND THIS YEAR CONTACT US TO FIND OUT HOW**

Book a Consult with us this month so we can help you get the most out of your benefits and have you leave smiling.



Aaron Pryor

**P 07 5442 1721**

**HINTERLAND VIEW DENTAL 6 Hill Street, Woombye**

[denturecaregroup@gmail.com](mailto:denturecaregroup@gmail.com)



**DO YOU VALUE YOUR TEETH?**

**Healthy Teeth, Healthy Smile**

At Hinterland View Dental we will look after you.

- Locally Owned and Operated
- Experienced and Friendly Staff
- Serene Environment

**NO GAP or 50% off all Check Ups and Cleans**

**Complementary Orthodontic and Cosmetic Consultations**



[www.hinterlandviewdental.com.au](http://www.hinterlandviewdental.com.au)

**6 Hill St, Woombye**

(opposite the Woombye Bowls Club)

**Call 5442 2378**



*Hinterland View*  
DENTAL

**ASPHALT & BASE CONSTRUCTION**

**CALL JOSEPH 07 5478 9834 | 0402 932 159**

**38 YEARS EXPERIENCE FREE QUOTES**



**RED BROWN & BLACK ASPHALT | MACHINE & HAND LAID HOTMIX ASPHALT**

- CAR PARKS
- SALES YARDS & DISPLAY AREAS
- DRIVEWAYS
- TENNIS COURTS
- FOOTPATHS, KERBS
- GRAVEL ROAD
- CRACK SEALING
- PRIVATE ROADS
- SPEED HUMPS
- MODERN, STYLISH EDGING
- EXCAVATIONS & DRAINAGE

[www.asphaltbaseconstruction.com.au](http://www.asphaltbaseconstruction.com.au)

# Rangebow Festival to celebrate inclusive values

by Lou Tasker

WHO would have believed that in the last years of the 19th century the seeds of the village that would become Montville in 1887 were planted, and those few early pioneers were joined by other families.

This land has an even longer history with First Nations people, who cared for it for some 40,000 years.

All these peoples come together in a new story, but more on that shortly.

This tiny community, like so many here in the Hinterland, struggled but they struggled together. And as the years turned into decades and the population grew, they were able to reach out more and more.

As the dirt tracks widened, as the transport grew a little more sophisticated (from walking to horseback to wagon and finally to car in the 1920s - well, one car), people were able to come together more for pleasure so that evenings and weekends could be enjoyed in a community setting.

There were dances and community dinners and people came together to play in thrown together bands for just such events. Some events were for fund-raising and many were for having fun.

The war years intervened and, through them all, everyone worked hard to help those far away - still fund raising and also knitting, making and baking.

The community spirit was very strong along the Range - everyone looked out for each other and helped where necessary.

In the latter part of the 20th Century women began to work away from home, and gradually children's extracurricular activities saw parents



Rangebow Festival board members Lou Tasker, Wayne Parcell and Skye Parker at a meeting at Montville Tennis Club.

busy on weekends, driving from one session to another.

The idea for a bright change started to form during the pandemic, looking for that resilience of community that was being broken down by isolation and masks.

The Range neighbourhoods needed something to look forward to, harking back to those earlier times of fun and purpose in the community; and now it is almost here.

The Rangebow Festival will celebrate the Range communities with the themes of sustainability, diversity, inclusion and reconciliation. From 10 to 13 August 2022, we are going to make our own fun - you won't need to go anywhere else, just like before. So be prepared to bring your creativity, your flair, your sense of excitement, your friends and family to a wonderful inaugural festival - celebrating our community, all of it.

► Be prepared to be delighted and surprised. For more information go to [www.therangebow-festival.org/](http://www.therangebow-festival.org/)

# Nambour Rummage Sale this Sunday

NAMBOUR and the Sunshine Coast's first ever Suitcase Rummage Sale is on this Sunday (March 27) at the Tram terminal next to Coles.

Nambour Tram Company invites everyone to bring all things vintage, pre-loved & handmade to the sale.

Tramco Director Rhonda Billet, pictured, said the lush, green space at the terminal was the perfect spot for a Suitcase Rummage.



"It's a great fit for Nambour that works on our vintage vibes," said Rhonda. "There'll be plenty of handmade creators, preloved fashion and vintage wares for sale from people from far and wide."

"There will be a live DJ for the Rummage enthusiasts to enjoy on the day with a sausage sizzle and the Nambour Tram terminal will be open to the public for the event serving cold drinks."

Attendees can also see the Vintage Petrie Cane Train Locomotive on display at Nambour Tram Company's onsite Tram Terminal.

You are invited to join in the fun Sunday March 27 from 10am until 2pm. Suitcase Rummage sites are only \$5 per suitcase. Bookings can be made via the Nambour Tram Facebook page.

## Join Bli Bli Garden Club: inaugural meeting Thursday

THE inaugural meeting of a proposed Bli Bli Garden Club will be held tomorrow morning (Thursday, March 24) from 9.30am in the Uniting Church Hall, 14 Lefoes Road.

Sandra Godfrey lives in the Bli Bli area and saw the need for a garden club, so decided in these pandemic times to go ahead and form one.

"It will be like a sister club to the Nambour Club," Sandra said.

"And give people even more opportunity to enjoy gardening and the camaraderie of other gardeners."

## Palmwoods Movie Night

PALMWOODS residents are invited to celebrate Easter at a free Community Movie Night hosted by Martinuzzi Property Group and the Palmwoods State School P&C.

The Palmwoods Easter Movie Night is a fundraiser for the school and will be held Saturday April 2 with gates opening at 6pm and screening at 6.30pm.

Organiser Leigh Martinuzzi thanked sponsors for making the event possible. They include: Homegrown Cafe, Palmwoods Heritage Bank, TKH Plumbing, Grow Accounting, Coastal Auto Doors and Gates, Hunchy Electrical, Aussie Nambour, Palmwoods Early Learning Centre, Tipper Truck & Excavator Hire and Martinuzzi Property Group.

► Register at [www.form.jotform.com/220687331942862](http://www.form.jotform.com/220687331942862) Food and candy bar available on the night.

## PROTECT YOUR OUTDOOR AREA FOR ALL SEASONS

### MOBILE SERVICE

We come to you!

Keep out the weather and extend your living space.

- Our blinds are retractable when not needed and are available in colours and styles to compliment your exterior scheme.
- Available with spring, crank or motorised operation, they are hard wearing, and made to withstand our tough conditions.
- Ours is a well established local family business with the experience to advise and install.

**Our quality products are made to last.**

Local Hinterland Company

Call us for an on-site measure and quote. Our experts will give you the right advice about the best product for your project.

## 5494 6898

[www.customcurtains.com.au](http://www.customcurtains.com.au)

**CUSTOM Curtains and Shade**

Blinds • Awnings • Curtains • Shutters • Security • Umbrellas

Proudly serving the Sunshine Coast for over 16 yrs

## DentalExcel

WE'RE HERE FOR YOU!

NOW OPEN FOR ALL PROCEDURES

In line with Stage 1 restrictions, we look forward to welcoming you back for ALL of your dental needs.

COVID-19 Screening measures in place to ensure safety.

Dental Excel is grateful for the dedication of our staff who have been there for your emergency treatments throughout this crisis. We are still here for you and still adhering to strict hygiene precautions to keep you and us safe.

Dental Excel is proud to be a part of the MARLEY DENTAL GROUP

## DentalExcel

Bulk Billing Medicare Child Dental Benefit Scheme for Eligible 2-17 yrs

- Family Dentistry • General Dentistry • Cosmetic Enhancements • Zoom® Teeth Whitening
- Veneers • Crown and Bridge • White Fillings • Preventative Dentistry • Children's Care
- Gum Disease Maintenance • Dentures and Veterans Affairs • Dental Implants

Payment plans available - no interest ever

Open Monday to Saturday • Early and Late Appointments

Ph: 5445 0166 2-4 Margaret Street, Palmwoods [www.dentalexcel.com.au](http://www.dentalexcel.com.au)

# WCBA: 'Have your say on potential overpass'

WOOMBYE residents are being encouraged to register their concerns in order to prevent the possibility of their town being cut in two by any possible future rail overpass plans.

Everyone agrees there's nothing firmly in place but Woombye resident and retired civil engineer Ken Hudson reckons a potential Woombye overpass is a possibility especially considering the cash that will be thrown at infrastructure projects with the looming Olympics.

The Woombye Community & Business Association got on the front foot last week urging members to have a say to Council during the current Planning Scheme public consultation.

"The idea of an overpass came up around 2008," said WCBA vice-president Grant Palethorpe. "There are no concept design plans or set dates at this time. There's no time-frame, we can only assume it would be when duplication finally happens. With the Olympics coming there will be a renewed push for duplication."

"An overpass would pass over the train line between the scout den and next to the War Memorial. Depending

on how duplication is delivered we may also lose the Woombye Snakes, Scouts and Pony Club.

"This (project) would be delivered by the State. Regardless, we should also make comments to Council during the planning scheme public consultation."

Mr Palethorpe said any plans for an overpass would clash with Woombye residents' vision for their town.

"Council have been working with us to deliver the Blackall Street streetscape," he said.

"The feedback Woombye gave Council was for a 'pedestrian friendly street', 'slowing traffic' and 'improving pedestrian safety'."

"As you can imagine Council's investment in creating a pedestrian-friendly street will be destroyed if an overpass is built. Increased traffic volumes, larger trucks and speed will all impact us."

► To have your say go to: [www.haveyoursay.sunshinecoast.qld.gov.au/newplanningscheme/woombye-palmwoods](http://www.haveyoursay.sunshinecoast.qld.gov.au/newplanningscheme/woombye-palmwoods) (Scroll down the page and press 'take the short survey').

## Nothing in pipeline: MP reassures town

MEMBER for Nicklin Rob Skelton has reassured Woombye residents that the Department of Transport & Main Roads has no current plans for an overpass.

"I've been in contact with TMR and they have assured me they do not have any current plans for an overpass through Woombye village, and there is no funding allocated to investigate any such proposal, which would have significant impacts in a highly constrained environment,"

he said. "TMR understand the village atmosphere of Woombye is an important part of the community and existing buildings and infrastructure are important community assets."

"TMR would like to reassure the community they remain committed to keeping the community updated on any major projects in the planning, design or construction phases. Even minor developments will trigger consultation with the community before it goes ahead."

## Residents honoured for dedication to conservation

TWENTY years ago John and Joan Dillon moved to their property at Hunchy, and were faced with 4.4 hectares of degraded environment.

Fast forward two decades, and their property is greatly improved and thriving thanks to their hard work and the advice and support from the Sunshine Coast Land for Wildlife program.

On March 9 the Dillons, along with 90 other Sunshine Coast Land for Wildlife members, were recognised for their long-term dedication to conserving and preserving our environment at a ceremony at Venue 114, Bokarina.

The members, who joined the program between 1998 and 2001, were given 20-year commemorative signs to hang with pride at their property entrance.

"The improvements they have collectively made to their properties have been incredible - removing weeds, protecting waterways and restoring grazing land to native forests," said Sunshine Coast Council Mayor Mark Jamieson. "This important work benefits our whole region by extending our vital wildlife corridors and improving the Sunshine Coast's biodiversity."

Mayor Jamieson said approximately 9500 hectares of private land was currently managed for conservation in the Sunshine Coast Land for Wildlife program.

"Back in 1998, the Sunshine Coast Land for Wildlife program started with just 62 properties," Mayor Jamieson said. "Now, 20 years later, the program continues to grow, with 1242 properties participating."

"In fact, in the last year, 101 new members joined the program."



John and Joan Dillon were honoured for 20 years of building Land for Wildlife at Hunchy.

"About a third of those new members purchased a property that was previously part of the Land for Wildlife program and decided to continue the previous owners' work."

"This demonstrates the incredible legacy of past owners and how the value of their ongoing commitment to conservation is carried forward."

Mrs Dillon who joined as a new resident, said Land for Wildlife offered a welcome opportunity for advice and help in "tackling a somewhat overwhelming prospect".

"The task we were faced with

then was daunting and is now much reduced and manageable but the reasons, namely creating habitat and links for wildlife, remain the same," Mrs Dillon said.

"My advice to new owners is to join immediately. Land for Wildlife is a fascinating journey. You'll learn so much and enjoy your successes along the way."

► More information on Land for Wildlife is available at [www.sunshinecoast.qld.gov.au/Environment/Get-Involved-in-Conservation/Land-for-Wildlife](http://www.sunshinecoast.qld.gov.au/Environment/Get-Involved-in-Conservation/Land-for-Wildlife)

## Now Showing at Majestic Cinemas

FEEL like a movie? Here's what's showing now at Majestic Cinemas in Nambour.

Now Showing: *The Batman*; *Napoleon: In the Name of Art*; *Off the Rails*; *Belfast*; *Dog*; *Ruby's Choice*.

There will also be a special event on Wednesday 30th March at 7pm - a

"Girls Night Out" Preview Screening of *The Lost City* starring Sandra Bullock and Channing Tatum. Wine is included on arrival.

► For more information on session times visit [www.majesticcinemas.com.au](http://www.majesticcinemas.com.au) or phone 5441 2954.

**SUMMER HOURS**

**8AM - 4PM**  
MONDAY TO FRIDAY

**8AM - 2PM**  
SATURDAY

**9AM - 2PM**  
SUNDAY

**HOW IT WORKS**

- Urban Depot and the Containers For Change scheme makes getting paid for recycling easy.
- Collect your eligible containers and remove the lids.

- Enjoy the drive through recycling experience at Urban Depot!
- Let us unload, sort and count your containers while you stay in your car.
- We bring your cash refund to your vehicle or we deposit your refund into your scheme ID account.

**THE ONLY FULL SERVICE CONTAINERS FOR CHANGE DRIVE THROUGH DEPOT ON THE SUNSHINE COAST!**

**FULL-SERVICE DRIVE THROUGH (NAMBOUR)**  
**7/1 WINDSOR RD, BURNSIDE 4560**  
**CALL 0492 846 936**

## ANNOUNCEMENT

ROGER LOUGHNAN

REAL ESTATE

### Mapleton

Thank you to our wonderful clients, both sellers and buyers who have trusted us with their property needs.

**07 5478 5288** "People who Care" **OPEN 7 DAYS**

Shop 2, Cnr. Obi Obi & Post Office Road, Mapleton

[rogerloughnanrealestate.com.au](http://rogerloughnanrealestate.com.au)

If you are looking to sell your property and want results CALL Roger Loughnan Real Estate

## Exhibition running from March 19th – April 30th

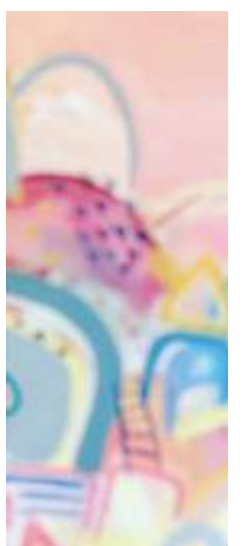


### Alice Graham

ORIGINAL ARTWORKS

# Bright & Beautiful

Yandina Art & Framing



# Woombye Spar store boss moves on reluctantly

POPULAR local identity Sammy Boxsell is putting her family and farming commitments first and stepping down from her role as Woombye Spar Store Manager.

Sammy said she was reluctant to leave the business which she helped restore after the previous owners' neglect. But she had to prioritise her parents' health and her growing farming commitments.

After two years in the top job and six years altogether Sammy left Woombye Spar on Friday March 18.

"I'm not really going anywhere I'm just going to have a little more life balance to be there for my parents who are unwell," she said last week.

"I'm doing 50-70 hours a week here and then I have a 30-acre farm with cattle to maintain and my parents to take care of. I just thought, I can't change my farm or my parents so I've had to make a decision to step down from the job.

"It will be sad to leave the team we've worked so hard to build. In my time here we've regained community engagement over the years which had suffered under the previous owners."

She said sales had followed with the renewed energy in the store.

"Sales-wise we're talking just under \$100,000 extra, a week, since I took over.

"My goal was to hit a certain target within the two-year period and we have done that, even with the challenges of Covid. Achieving that goal meant we were able to get the new flooring installed. Now we've also achieved a second goal which will mean the store gets much needed new lighting.

"For the future of the store, I would just like to ask the community to support the team here.

"I feel awful for having to leave. I've lived and breathed this store for the two years and it's a big decision to be moving on. Anyone that knows me knows I have given my everything for this place and the people."



Sammy Boxsell says she has had to prioritise her parents' health and her growing farming commitments and relinquish her position as Woombye Spar Store Manager.

Once the dust settles Sammy has been offered some part time work in Toowoomba, for a change of scenery and to be nearer her other cattle property on the Darling Downs. "I'll be doing a few days at Mike Williams Country Clothing. That will be my escape."

Shop assistant Gabby Donovan, who joined Spar in December after 35 years at Woolworths, said she would miss her boss.

"Sammy has a very good character and is a great ambassador for Spar and for the business. Coming from Woolworths into Spar it is certainly a much nicer environment. And Sammy has everything to do with that. She made me feel welcome and took the pressure off and she gives you the encouragement and feedback to make you try harder."

Sammy said if she had to name one secret to her managerial style it would be her ability to earn the respect of the team.

"The team know there is not one task in the store that I ask them to do that I wouldn't do myself," she said. "I work beside them, not above them - even down to unloading the delivery trucks with the forklift (which she does very morning)."

For now Sammy is looking forward to more country life, rotating between her Sunshine

Coast and Darling Downs beef cattle properties. "To me down time is doing some fencing and cattle work. Putting 150-odd head of cattle through a yard to brand and drench ... that's therapy."

## Old Time Dance, Latin spice, and a free lesson

THE Belli Community Hall will be hosting an Old Time Dance on Saturday April 2, starting at 6.30pm.

It will be run on a similar format as previous dances, but there will also be a ChaCha lesson, or a little bit of latin depending on requests.

As you walk in the door, please nominate Rock n Roll, Latin or Jazz! Dinner will commence at 5.45pm, with chicken curry and rice, and supper at the break.

Our aim is to get families and kids along, so we can teach our kids to dance too!

No judgement here, just fun! Eftpos available, \$15 per person, or \$30 a family. Please check the Belli Community Hall facebook page for more info!

If you would like to RSVP, please call the Secretary on 044 894 8198.



Rai Thistlethwayte is travelling up the hill to wow audiences at the second Maleny Long Lunch.

## Legendary vocalist to star at Maleny Long Lunch

FOLLOWING the huge sold-out success of the inaugural Maleny Long Lunch in October 2021 - which featured legendary vocalist Glenn Shorrock - the event is making a return to the Maleny Showgrounds Pavilion.


On Sunday April 3 one of Australia's greatest musicians, Rai Thistlethwayte, will travel up the hill to wow audiences at the second Maleny Long Lunch. Rai is well known for the classic hits he penned as front man of pop giants Thirsty Merc such as "20 Good Reasons", 'In The Summertime' (The Bondi Rescue theme song for over 11 years) and 'Someday, Someday' plus many more.

The Maleny Long Lunch will again be offering up a sumptuous feed courtesy of our mates at Gympie's legendary Smokehouse Beauty & The Beard and thanks to our partners from Bird In Hand Wines and Sunshine & Sons, there will again be amazing quality wines and cocktails as well as a selection of beers available to purchase from the bar.

Supporting Rai Thistlethwayte will be Sunshine Coast's rising star of Country Pop, Taylor Moss. Rounding off the afternoon will be the brilliant Mismo Tempo who promise a breezy set of sing along classic hits to accompany those early evening sundowners.

The event will open its doors at noon and will run until 6.30pm at which time audiences can toddle off home and hit the sofa.

Profits from the bar will help support Wishlist. For more information and tickets go to www.malenylonglunch.com



**High Teas**  
Wednesday – Sunday  
10:30am and 1pm

**Season Set Menu**  
Wednesday – Sunday  
12:00pm

**Flaxton Feasts and Roasts**  
Wednesday – Sunday  
12:00pm

**Bookings Essential.**  
For Seasonal Set Menu, bookings are preferred, but walk-in's are also welcome.

CALL NOW TO BOOK  
**07 5445 7450**  
313 Flaxton Drive, FLAXTON  
flaxtongardens.com.au

## SEASONAL SET MENU

### MARCH & APRIL 2022

---

*ENTRÉE*

Bunya Nut & Sweet Pea Risotto with a Parmesan Wafer v  
OR  
Prosciutto, Fresh Grilled Peaches with a Roquette Salad & Balsamic Dressing *gf, df*  
OR  
Thai Whitebait Fritters with Egg Plant Caviar and a Herb Salad *gf, df*

---

*MAINS*

Crispy Skin Barramundi with Mussel & Fennel Fricassee *gf*  
OR  
Confit Pork Shoulder with a Crunchy Apple and Smoked Potato Salad *gf*  
OR  
Sautéed Gnocchi, Pumpkin Puree and Roasted Organic Vegetables *gf, vegan*

---

*DESSERT*

Poached Pear on a Honeycomb and Pistachio Crumble with Maleny Vanilla Bean Ice Cream *gf*  
OR  
Lemon Curd Tart with Meringue & Sorbet *gf*  
OR  
"Flaxton Specialty Souffle" *gf, df available*  
Baked fresh to order & topped with Vanilla Bean Ice Cream & Raspberry Coulis

2-Course Meal - \$44.00 | 3-Course Meal - \$59.00

Enjoy a complimentary glass of Flaxton Grove House Wine or Flaxton Grove Sparkling Brut when ordering a three course meal.

---

*EXTRA NIBBLES TO ORDER*

Cheesy Garlic Bread 8.00  
Toasted Fresh Flaxton Bunya Nuts with Pesto & Balsamic 8.00



# BALCONY BOOK SALE

**SATURDAY  
2ND  
APRIL**

8:00am to 1:00pm

Adult titles both fiction and non fiction \$2  
All children's books 50c  
All the proceeds of the sale will go towards purchasing new titles for the library.

**Woombye Community Library Inc.**  
07 5442 2250 | [www.woombyecommunitylibrary.org](http://www.woombyecommunitylibrary.org)

**1-3 Hill Street Woombye**

Need legal advice about retirement living?

## David Wise Solicitor

Specialist advice for residents and prospective residents of retirement villages, over 50's resorts, and manufactured home parks, including entry, exit, dispute resolution, Wills, Powers of Attorney and Estates.



0412 254 080 | [principal@davidwisesolicitor.com.au](mailto:principal@davidwisesolicitor.com.au)  
[www.davidwisesolicitor.com.au](http://www.davidwisesolicitor.com.au)



# SPAR



# WOOMBYE

## Market Specials



**\$2.50**  
KG.

Valencia Oranges



**\$2**  
KG.

Loose Brushed Potatoes



**\$2.50**  
EA.

Broccolini Bunch



**\$1.50**  
EA.

Prepacked Carrots 1kg  
\$1.50 per unit



**\$4**  
KG.

Yellow or White Peaches

### LOW PRICES ALL DAY EVERY DAY



**PAYLESS EVERYDAY**

**\$10** kg.

Chicken Roll *From the deli*



**PAYLESS EVERYDAY**

**\$7.50** kg.

Devon *From the deli*



**PAYLESS EVERYDAY**

**\$25** kg.

Melosi Premium Leg Ham *From the deli*

SCAN TO SUBSCRIBE TO OUR LATEST WEEKLY CATALOGUE STRAIGHT TO YOUR INBOX!



Specials available Wednesday 23rd March until Tuesday 29th March 2022

## WOOMBYE

20 BLACKALL ST

## OPEN 7 DAYS!

PH: 5413 8007



Specials available while stocks last. Limit rights reserved. We reserve the right to correct any printing errors and omissions.



Karen Barnett and Glennis McAlpine from the Conference Planning Group invite everyone to the event at Maleny Showgrounds.

## Baha'i community stages Maleny conference

MALENY'S Baha'i community is inviting residents to join a local, national and global conversation about building vibrant and purposeful communities at a conference this Saturday (March 26) at Maleny Showgrounds.

The local event is one of over 80 similar "World Conferences" to be held across Australia.

"The goal is to provide an opportunity for participants to engage in fun yet purposeful dialogue as we all work towards creating a community that is vibrant, inclusive and nurturing of our children," said organiser Susan Foy.

Susan said the conference aimed to draw out and share the aspirations of children, youth and parents.

"As the Sunshine Coast Council is currently seeking feedback on the proposed vision and planning directions for our region, we may decide to make a collective submission," she said.

"The program is interactive, incorporating arts with dialogue and panel discussion."

The Baha'i Faith is an independent world religion that arose out of the matrix of Islam in Iran, much as Christianity emerged from the matrix of Judaism.

It is not a sect or denomination of Islam

or any other religion. It is a modern, independent, monotheistic religion established in virtually every country of the world. In the middle of the 19th century—one of the most turbulent periods in the world's history—a young nobleman announced that he was the bearer of a message destined to transform the life of humanity. He took the title Bahá'u'lláh.

With his call for spiritual and moral reformation, and his attention to improving the position of women and the lot of the poor, this prescription for spiritual renewal was revolutionary.

Today, his life and mission are becoming increasingly well-known across the planet. Millions of people are learning to apply his teachings to their individual and collective lives.

### Conference Details:

► The Pavilion, Maleny Showgrounds Saturday, March 26. The event is free to all, though there will be opportunities to make a contribution if so desired. Interactive craft activities are available for the children and junior youth programs. Registration 8.30am. Finish 5pm. Meals provided. To register: [events.humanitix.com/maleny-conferences](http://events.humanitix.com/maleny-conferences). [bahai.org.au](http://bahai.org.au) Enquiries: [Glennis.McAlpine@bahai.org.au](mailto:Glennis.McAlpine@bahai.org.au)



MAIN: Div 5 Cr Winston Johnston on the site. INSET: The proposed Ecological Park, shaded white, is larger than the area of the current Mary Cairncross Scenic Reserve, shaded green.

## Next step for Maleny's proposed ecological park

A proposed ecological park in Maleny is moving into the next phase of becoming a reality with Council forming a reference group and reaching out for community input.

Expressions of Interest are open for the Sunshine Coast Ecological Park Community Reference Group (CRG) with plans for the park to be located on 65 hectares of council-acquired land, adjoining the Mary Cairncross Scenic Reserve.

"The CRG will be an important engagement tool to provide direct feedback, ideas and advice during the planning and design phase of the park," said Environment and Liveability Portfolio Councillor Peter Cox.

"It will also assist in the development of the masterplan and business case, which is anticipated to be finalised in early 2023.

"We're striving to develop a park for the community, shaped by the community."

The CRG will consist of up to 10 members

from across the Coast from diverse backgrounds.

Division 5 Councillor Winston Johnston said establishing the park would contribute to the Sunshine Coast's vision of being Australia's most sustainable region.

"The park will be part of Mountain View which is one of five major green spaces on the Sunshine Coast," Cr Johnston said.

"The park will strive to be innovative in its approach, allowing nature to be the hero and the focal point of all plans.

"The park will aim to support nature-based recreation, education, research and social gathering while protecting, celebrating and restoring environmental, natural and cultural heritage values."

► To learn more about being part of the CRG and to express your interest, visit Sunshine Coast Council's website.

# Get ready to GO

Your new **Garden Organics** bin arrives soon.

We're expanding our three-bin waste collection system. For residents who don't already have a garden organics bin, your new service starts July 2022.

**LET'S GET WASTE SORTED**

For a cleaner, greener and sustainable Sunshine Coast.

[sunshinecoast.qld.gov.au/gardenbin](http://sunshinecoast.qld.gov.au/gardenbin)  
07 5475 7272

[← FIND OUT MORE](#)

What can't go in your garden organics bin?

- General rubbish
- Plastic bags
- Logs, stumps or tree limbs larger than 30cm
- Bricks rocks or rubble
- Dirt, soil, sand or potting mix
- Fruit or food scraps
- Treated timber
- Recyclables
- Garden accessories like plant pots, gnomes or hoses
- Rope or plastic

What can go in your garden organics bin?

- Garden clippings
- Weeds
- Leaves
- Garden prunings
- Flowers
- Small branches, and palm fronds cut into small 30cm pieces

Please ensure the lid closes. Leave everything loose, no plastic bags.



## Classic car a cut above the rest, thanks to crystal finish

IT'S not just a crystal-clear paint job. It's literally a crystal paint job.

It's thanks to Montville Autos owner Lathan Harmston who has mastered a rare custom paint technique which "grows crystals". The crystals form as a liquid application dries, creating intricate patterns over a chosen base coat colour.

"It's a known technique in the industry but it's not often used," said Lathan. "And no wonder because it's extremely difficult. My painter mates think I'm nuts for trying it. It can be frustrating because it doesn't always come out first go. I tried Serge's car four times before I was happy with it. The weather plays the biggest role in how the crystals are going to grow and where they are going to grow. It all depends on temperature and humidity. Even the panel temperature can effect whether it works or not."

Despite the trial and error Lathan said he enjoyed the solitude and creativity of painting. "I like the peace and quiet," he said. "Once the doors are shut, it's just you and the car. And I'm lucky enough that Serge has quite a few cars and is into doing something different so I get to play with his ideas."

As for car owner Serge Doumergue, he couldn't be happier with the end result which has given his 1978 P6 Ford LTD a new lease of life. "I receive endless comments wherever I go," Serge said. "This amazing crystal finish is a



Car enthusiast Serge Doumergue and Montville Auto owner Lathan Harmston appreciate the crystal paint job on the bonnet of Serge's LTD.

fitting tribute to the LTD which was Australia's biggest, most luxurious car ever made. Giving an old girl a custom paint job is like giving her a beautiful new dress. People start to notice her and admire her again."

Serge has a collection of 17 cars and is a member of the Blackall Range Horseless Carriage Club. He enjoys sharing his sought-after collection with the public at various events across the Range.

Serge said he wanted people to realise they didn't have to go off the Range to find serious automotive expertise.

"The work Lathan is doing here is essentially world-class. And it's right here on our doorstep. People who are seriously wealthy are paying a quarter of a million dollars to get this effect in expensive 2PAC kitchens - on their cupboards and splash-backs!



"And we have that expertise in Montville."  
▶ Montville Auto is at 12 Balmoral Road, Montville. Phone 5442 9413.



Margie Gowty from St Augustines prepares for March madness with clothing going for \$1 an item.

## Op Shop Summer stock reduced to just \$1 per item

IT'S that time of the year again for some really serious bargain shopping at St Augustine's Op Shop, 22 Main Street, Palmwoods.

March Madness is in the air again and so is the opportunity to take advantage of rock bottom prices and help the team make room for the winter stock which will be coming soon.

All summer stock is reduced to \$1 per item. Bric a brac and kitchen items are half price. Books and DVDs are 50cents each and CD's 20 cents each.

The shop is opposite the Palmwoods Hotel and the Spar Supermarket and is open on Tuesdays, Thursdays and Saturdays from 9.30 to 1pm. Margie Gowty and her volunteers will always make you feel welcome. And Barney, the friendly "security consultant", is always there ready for a pat and a treat.

The sale starts on Saturday, March 26 and will continue for two weeks. All proceeds go to the outreach work of the Anglican Church, particularly flood relief and the Triple B Clinic in The Philippines. For further information please call Margie on 0479 085 555.

## Ride2School Day is back for 2022

FRIDAY is National Ride2School Day on the Sunshine Coast. Students who register to pedal, scoot or skate to school this Friday, March 25 will be in the running to win one of four \$500 bike shop vouchers on offer by Sunshine Coast Council.

Thousands of students from more than 70

schools across the region will celebrate National Ride2School Day.

The annual nation-wide tradition is a great opportunity for students to get outside and incorporate healthy and sustainable travel options into their everyday lives.

Sunshine Coast Council Transport Portfolio

Councillor Rick Baberowski said Ride2School was a chance to further encourage young people to maintain or develop healthy and sustainable transport habits.

▶ Register on council's website before 5pm on Friday, March 25, 2022 to enter the draw for your chance to win. For more information email [travelsmart@sunshinecoast.qld.gov.au](mailto:travelsmart@sunshinecoast.qld.gov.au) or contact council.

# Sponsorship applications opening soon

## Applications open 1 April – 30 June 2022

If your community group is from the Palmwoods area and would like to apply, please speak to one of our team for more information.

**Heritage** | Palmwoods  
Community Branch

Visit your local community branch at Palmwoods Plaza or call 07 5294 0600

# \$1m funding to pave way for Palmwoods safety upgrades

ONE million dollars in funding has been announced to pave the way towards improved safety in Palmwoods following community concerns.

Assistant Minister for Road Safety and Freight Transport Scott Buchholz said the Australian Government was proud to help boost safety for locals and visitors to the hinterland town.

The federal government will contribute \$800,000 and the state government \$200,000.

"This funding supports the roll-out of important road safety treatments on roads and provides new infrastructure for greater protection for vulnerable road users like pedestrians," Mr Buchholz said.

State Member for Nicklin Robert Skelton said over 270 people had their say on the proposed options, which included traffic calming devices, upgrades to existing crossing points near the Post Office and Rick's Garage, along with a new crossing point near the Palmwoods Bakery.

"We know that the local knowledge and an understanding of the community's preferences and key issues helps us to deliver the best outcome for all," Mr Skelton said.

"In particular, I acknowledge concerns about impacts to car parking and the current limited availability of car parking in general in Palmwoods, which featured heavily in the feedback

received.

"In response to the feedback, the parking arrangement on Margaret Street will be reviewed and opportunities to improve car parking capacity and convenience be investigated.

"A revised concept design is currently being finalised and will be released to the community for further comment in the coming weeks.

"We look forward to providing Palmwoods locals with another opportunity to have their say and help shape improvements in their community."

"Our region is in the midst of a population boom, so it's important we are delivering projects to help our roads and transport systems cope," he said.

Queensland Transport and Main Roads Minister Mark Bailey said the Palaszczuk Government was committed to improving safety for all, as part of the record \$27.5 billion road and transport plan.

"We want to make sure every Queenslanders gets home safer and sooner, whether you are driving, riding a bike or walking," Mr Bailey said.

► For more information about the project, visit [www.tmr.qld.gov.au/projects/palmwoods-safety-treatments-concept-design](http://www.tmr.qld.gov.au/projects/palmwoods-safety-treatments-concept-design).



Sunshine Coast Division 5 Councillor Winston Johnston and Federal Member for Fisher Andrew Wallace inspect the recent Citrus Road upgrades.

## Palmwoods to Eudlo travel made safer

A \$2.3 million boost to a Palmwoods connection road has been sealed and delivered, ready for motorists to enjoy.

The project was completed last month, jointly funded by the Australian Government and Council.

Sunshine Coast Council Division 5 councillor Winston Johnston said work would improve the safety of Citrus Road.

"This upgrade is vital in keeping our small communities, residents and local businesses connected and safe," Cr Johnston said.

"The unsealed 'missing link' spanning 950 metres between Wilkins Lane and Eudlo School Road has been upgraded to improve safety in line with road design and safety standards."

Works include improving the alignment of the road and widening to provide one lane each way with a road shoulder on each side.

"The works have also enhanced road conditions and, importantly, line of sight for road users which was a critical component of this major upgrade.

"An added benefit for residents is that dust will no longer be a problem now that the road is sealed.

"This is an important travelling route con-

necting the Palmwoods and Eudlo communities and is a high priority for council to make sure everyone continues to benefit and enjoy our unique urban and rural lifestyles.

"I would like to thank the community for your understanding and patience while these works were delivered from August 2021. It was well worth the wait."

The works are part of council's Unsealed Roads Upgrade Plan contributing \$100,000 from council with \$2.2 million provided from the Federal Government.

Federal Member for Fisher and Speaker of the House of Representatives, Hon Andrew Wallace MP said this project would make a huge difference to local residents who use the road each day.

"Through the Local Roads and Community Infrastructure program, the Federal Government is partnering with local governments to ease congestion and improve safety - to ensure that locals can get home sooner and safer," Mr Wallace said.

"This is about supporting people to get back on their feet after a challenging two years, and helping local families and local businesses get ahead."

## Australian Tourism Award for Narrows Escape

NARROWS Escape Rainforest Retreat have won gold in the Hosted Accommodation category of the Australian Tourism Awards held on the Sunshine Coast on Friday night.

Sunshine Coast Council Mayor Mark Jamieson said it was an exciting night for tourism operators, highlighting how important the national tourism industry was for the economy.

"Montville's Narrows Escape Rainforest Retreat taking gold for Hosted Accommodation is wonderful acknowledgement of a tourism operator's ambition to provide outstanding service and encourage visitation to our beautiful Sunshine Coast," he said.



Narrows escape Ali and Xochi Khan with Visit Sunshine Coast CEO Matt Stoeckel.



# Join our volunteer community!

Looking to do something that is both rewarding and makes a difference in your community?

RangeCare's volunteers play a significant role in supporting both our clients and staff. Our generous volunteers help support our clients in living their best life by delivering a comprehensive range of services.

We are currently looking for volunteers who can fill the following roles:

<ul style="list-style-type: none"> <li>• <b>Aqua Aerobics Volunteer</b> Mondays in Nambour</li> </ul>	<ul style="list-style-type: none"> <li>• <b>Home Visiting Volunteer</b> Nambour area</li> </ul>	<ul style="list-style-type: none"> <li>• <b>Day Respite Centre Music Volunteers</b> Once a month in Nambour</li> </ul>
<ul style="list-style-type: none"> <li>• <b>Op Shop Volunteers</b> Fridays &amp; Saturdays in Mapleton</li> </ul>	<ul style="list-style-type: none"> <li>• <b>Veggie Gardener</b> Nambour area</li> </ul>	<ul style="list-style-type: none"> <li>• <b>Day Respite Centre &amp; Kitchen Assistant</b> In Nambour &amp; Gympie</li> </ul>

**Volunteer Positions also available in the Gympie Region**

*All applicants are required to have full COVID vaccination or proof of medical exemption to volunteer at RangeCare.*

**To find out more or to become a RangeCare Volunteer, give us a call on 07 5455 7044 or visit [www.rangecare.com.au/volunteer](http://www.rangecare.com.au/volunteer)**

NATIONAL WINNER

ORGANISATION AWARD WINNER

Blackall Range Care Group





*Live your best life!*



Debbie Collier in the kitchen at Yandina Historic House.

## Yandina Historic House back up and running

BETWEEN Covid and recent floods we have had to have the Yandina Historic House closed for most of January and February.

We have had to keep our fantastic volunteers safe. As they say, 'if its flooded, forget it'. But we have used the time for those who could get in, to do some renovations to both the Historic House and the Museum. Floors have been re-finished and the Museum organised into sections that show many aspects of our history.

There was a re-launch on Saturday (March 19) at a special meeting to be held at the museum at 3 Pioneer Road Yandina, behind the Yandina Historic House.

There is fresh new artwork in the gallery and loads of unique pottery on display as well. Our resident artist Colin Nation finished as featured Artist on March the 21<sup>st</sup> and the next exhibition will be a number of artists presenting "The Endless Summer" theme with colourful beach and surf scenes on our beautiful Sunshine Coast to celebrate our fabulous coastal lifestyle.

- Colin Nation

## Palmwoods craft stalwart celebrates 93rd birthday

'Gratitude, a positive attitude, and an occasional tipple of gin!'

by SK Wilde

SURROUNDED by a lush garden rich with food and flowers, Palmwoods artist Lillian Rice just celebrated her 93rd birthday.

Inspired by her father, Charles Tomkins, Lillian's work ethic and horticultural knowledge keep her healthy and productive. He pioneered avocados into the region, from his farm on Old Bowling Green Road.

Growing up on the farm, she remembers crossing the tracks to join in the Saturday night dances at the Palmwoods Hall.

Married at 21, Lillian and her husband Keith lived and worked on a cattle station near Blackall, for some years. In between work as a part-time cook, she home-schooled her growing family. A tragic accident claimed her first son, as a toddler, but her two remaining children grew into successful adult lives, instilled with their grandfather's strength of character, passed on through Lillian.

Returning to Palmwoods, Lillian worked as a secretary, bookkeeper, and receptionist. For several years, respectively, she assisted local experts: herbalist Isabell Shipard, and acupuncturist Ian Schneideman. Both published authors of world renown have thanked Lillian for her contributions, in their books.

Events brought her home to the farm, where she cared for her parents, until she was finally alone.

In 1992, with Rose McGowan (now passed), Lillian co-founded the Palmwoods Creative Arts and Crafts Association. The industrious group soon outgrew their original venue in town, and relocated to Lillian's farm.

They enjoyed the multiple barns on Lillian's property, with dedicated spaces for the dif-



Lillian Rice, 93, has fond memories of crossing the tracks to join in the Saturday night dances at the Palmwoods Hall.

ferent creative disciplines, including: a range of painting mediums, pottery, dried flower arranging, patchwork quilting, hat-making, ceramic painting, basketry, folk art, and doll-making.

Lillian recalls, "It seemed like every time someone wanted to try a new art style, I put up a new shed."

Palmwoods residents remember visiting as children, in company of their mothers who were part of the craft group. Many have fond memories of the annual craft fair - the fields transformed into a magical village of marquis, foods, plants, flowers, and - of course - art on display and for sale.

As the group's press secretary, Lillian wrote news articles and kept meticulous albums of press clippings, photos, and memorabilia - a wealth of history and experiences that have greatly enriched this town.

With a twinkle in her eye, she acknowledges her secret to longevity, "Gratitude, a positive attitude, and an occasional tipple of gin!"



Joyce Lee's latest novel is set amidst the turmoil and rebellion of Tudor England

## Maleny resident pens new novel on 16<sup>th</sup> century England

WHEN long-term Maleny resident Joyce Lee, who writes under the name of Joy Richards, penned her second novel she knew she wanted to explore certain themes.

Joyce has always had a passion for history especially for 16th century England which inspired her to write her first novel *The Healer's Daughter*, Book 1 in The Barnsbridge Series. *The Willow Horse* is Book 2 in the series.

Both books are stand-alone novels but linked by unity of time and place, a tumultuous, dangerous period in history when England changed and changed forever.

Set amidst the turmoil and rebellion of Tudor England and embracing universal themes of love, fear and guilt, *The Willow Horse* is a tale of obsession, a tragic family secret and the haunting power of the past over the present.

► *The Willow Horse* is published by Boolarong Press and is available at Rosetta Books, Maple Street, Maleny.

**GOODYEAR**  
AUTOCARE Good to go

**ALLCOAST**  
TYRE SOLUTIONS

22 Coronation Ave, Nambour

Ph: 07 5343 8344

(Opposite the Nambour RSL)

Providing the right advice, the right product and best value for money in tyres and services while meeting budget and understanding your driving style.

OUR SERVICES [www.allcoasttyres.com.au](http://www.allcoasttyres.com.au)

### TYRE FITTING

Car, SUV & 4WD's  
Mowers & Wheel Barrows

- Tyre Repairs
- Tyre Rotations
- Wheel Alignments
- Fleet Tyre Servicing & Management
- 24/7 Commercial Mobile Tyre Service

(All Tyre brands available)

Locally owned by John & Peter O'Leary

Ask us about our 25% off tyre deals!



**ELITE FOOT CARE**  
Podiatry • Orthotics • Footwear

Online Bookings Available

Call Elite Foot Care on  
**5328 3588**  
to book  
your appointment

[www.elitefootcare.com.au](http://www.elitefootcare.com.au)  
For online bookings

**DO YOU HAVE FOOT AND LEG PAIN?**

The team at Elite Foot Care can treat:

- Heel Pain
- Achilles Pain
- Shin Splints
- Knee Pain
- Hip Pain
- Lower Back Pain
- Arthritis
- Ingrown Nails
- Kids Podiatry

• Private Health Rebates • Medicare Rebates  
• DVA Registered • NDIS • Workcover  
• Home Care Packages • No Referral Needed

4/40 Wilson Avenue, Woombye  
Corner of Blackall Street and Nambour Connection Rd

OPEN HOURS: Mon-Fri 8:30am - 5pm [www.elitefootcare.com.au](http://www.elitefootcare.com.au)

## What's On in the Hinterland

Local Sport, Events and Entertainment coming up. Preference given to local events of widespread interest. Please check details with organisers. Submissions to editor@sunshinevalleygazette.com.au.

**Every Saturday:** Yandina Country Market from 6am to 12pm, North Street, Yandina.

**Every Saturday:** Kenilworth Country Markets from 8am to 1:30pm at Kenilworth Town Park, Charles Street.

**March 24:** inaugural meeting of a proposed Bli Bli Garden Club from 9.30am in the Uniting Church Hall, 14 Lefoes Road.

**March 26:** Belli Community Hall Rock and Roll dance, 6.30pm. Food and drink available, dance lesson at the start. Please see FBook for updates or call 0448 948 198.

**March 26:** Op Shop Summer stock reduced to just \$1 per item at St Augustine's Op Shop, 22 Main Street, Palmwoods.

**March 26:** Maleny's Baha'i community conference at Maleny Showgrounds.

**March 27:** Pack your port and head to Nambour for the Suitcase Rummage Sale at the Nambour Tram Co Terminal (next to Coles) from 10am to 2pm.

**April 4, 5:** Great Walk for Parkinsons, from Mapleton to Lake Baroon Recreational Park in Montville on Tuesday April 5. Tickets [www.picnicforparkys2022.eventbrite.com.au](http://www.picnicforparkys2022.eventbrite.com.au)

**April 8-10:** Queensland Under 13, Under 15 and Youth (Under 17) State Championships at Sunshine Coast Weightlifting Club at Crusher Park, in Crusher Park Drive, Nambour.

**April 9 and 10:** Yandina Bowls Club (Club Yandina) Open Fours Tournament.

**April 9:** Gordie Tentrees' exclusive Nambour afternoon show at the Black Box Theatre Tickets: [www.trybooking.com/BXWNG](http://www.trybooking.com/BXWNG).

## Sunshine Coast Native Plants

SUNSHINE Coast Native Plants will have an excursion to a private property in Palmwoods area on Sunday April 10, 8.30am start. Bring your own seating and morning tea. Parking and toilet available. RSVP required to Pam: [lpw3@bigpond.com](mailto:lpw3@bigpond.com) or 5429 6845.

## Canadian folk singer singles out Nambour for special attention

CANADIAN folk troubadour Gordie Tentrees is making a special detour from his Australian schedule for an exclusive Nambour afternoon show at the Black Box Theatre on Sunday April 10.

Hosted by the popular concert series Sunday Folk, this will be Gordie's only Queensland show in a tour that sees him cover much of New South Wales, Victoria and Tasmania.

"It's very exciting to be hosting international performers again at Sunday Folk," said organiser Karen Law. "Gordie has been waiting a long time to be able to play this tour and we can't wait to welcome him to our stage. He has put together a fairly big tour of Australia but he is making a special one-off trip to Nambour just for us before turning round and heading straight to Tasmania. It's pretty unusual - even for a folk performer - to make Nambour their only Queensland show."

Karen said this was a must-see show for lovers of rootsy realism from a performer who has been described as writing "the kind of songs Bob Dylan or Woody Guthrie might be writing if they were starting out now".

"We've been trying to put him on for nearly two years, it's been postponed twice but he's very tenacious and he really wants to play in Nambour. I'm hoping we can give him the audience he deserves since he's put so much faith in our town."

Tentrees has played over 750 shows in 11 different countries in the past four years, winning over audiences with his honest and authentic storytelling. His latest album Mean Old World explores the songwriter's path from foster child



Canadian folk troubadour Gordie Tentrees has been described as writing "the kind of songs Bob Dylan or Woody Guthrie might be writing if they were starting out now".

to foster parent. Gordie spent time in the social service system in Canada before growing up to be a school teacher and youth worker, then coming back full circle as a foster parent to an indigenous child.

This will be the first Sunday Folk of 2022 and the first with an international performer for a long time. The concert series has been running for six years at Nambour venues and promotes top folk musicians to a listening audience. It is a community event run by volunteers where all proceeds go to the musicians.

► Gordie Tentrees plays at Sunday Folk on Sunday April 10. Doors open 1.30pm for 2pm start at Black Box Theatre, Old Ambulance Station, Nambour. \$23 (adults), \$20 (concession) and \$10 (under 18). Bar, tea, coffee, cakes available. Tickets: Trybooking <https://www.trybooking.com/BXWNG> (or on the door if not sold out).



## Yandina Bowls Club prepares for Open Fours Tournament

THE Yandina Bowls Club (Club Yandina) has their preparations well underway to host its Open Fours Tournament again on the weekend of April 9 and 10.

Last year's tournament saw Club Yandina host 18 teams for the weekend, with some teams travelling from as far away as Charleville.

This year's tournament will be even bigger and better, with 28 teams of four players now registered to compete for the \$5000 in prize money.

Local businesses have also shown their support for the event, through generous Sponsorship and donations of raffle prizes.

Club Yandina sees this annual Open Fours bowls competition as a fantastic opportunity to introduce visiting bowlers and their families and friends to the delights of the Club, the historic Yandina township and the surrounding Sunshine Coast areas.

Local bowlers and visitors are of course always welcome at Club Yandina; at their Social Pairs Bowls on Tuesdays from 1pm, and at our Friday Barefoot Bowls from 4pm and Bistro from 6pm. Please look up the Club on Facebook for more details, or contact them by phone on 54467126, or email at [yandinabowlsclubinc@bigpond.com](mailto:yandinabowlsclubinc@bigpond.com)

## NAMBOUR NEWS & CASKET



• Stationery • Magazines • Lotto & Instant Scratch Tickets  
• Newspapers • Gifts

We can home deliver your newspapers and magazines and we are also agents for Cartridge World.

Shop 28, 52-54 Currie St, Nambour  
P: 5441 2029 | @NambourNews

## QCWA Maleny Country Kitchens Info Day

MALENY Branch will be hosting an open day on April 26 where you can come along and learn all about our Country Kitchens health promotion program.

The day will involve a recipe demonstration with taste testers, with a focus on native Australian ingredients. Dietitian and nutritionist Aleks Lukovic will be conducting the Information Day.

Come along to learn about healthy eating and try some delicious Country Kitchens recipes featuring native Australian bush foods!

The Day takes place Tuesday, 26th April from 9.30am to 12.30pm at the Girl Guide Hut, 17 Cedar St, Maleny. Please call Cynthia Daniels on 5499 9639 between 5-7pm or email [judystubbs1@gmail.com](mailto:judystubbs1@gmail.com) to register your interest before April 22.

• PHOTO: Judy Stubbs, left, with dietitian and nutritionist Aleks Lukovic who will be conducting the Information Day.



## Library opening hours extended

RESIDENTS will soon have more time to access Nambour, Maleny and Kenilworth libraries with Council extending weekday opening hours.

Div 10 Cr David Law said council appreciated how much residents loved visiting the library.

"Council is committed to ensuring our libraries continue to provide services that are interesting, relevant and that strengthen our community's resilience.

"The amended weekday opening hours will maximise community access and usage and draw people back to our library spaces," he said.

### New opening hours:

- Kenilworth: 2-5pm Monday and Tuesday; 9am-12pm Wednesday and Thursday; 10am-3pm Friday; Saturday 9am-Midday.
- Maleny: 8.30am-5pm Monday-Friday; Saturday 9am-Midday.
- Nambour: 9am-5.30pm (open until 6pm on Tuesday and Thursday); Saturday 9am-1pm.



# BREAKFAST now served daily



## CLOUDS THE BARREL

Why not make it a relaxing weekend with a stay at Clouds Montville?

Kick start your day at The Barrel!

Breakfast Menu available all day mid-week and until noon on weekends.

"All You Can Eat Continental Buffet" available 8am - 10am every morning.

ALL DAY CASUAL DINING | TAKE AWAY | FUNCTIONS | WINE FLIGHTS | BEER PADDLES | GRAZING PLATTER | KIDS PLAY AREA

07 5429 6361

787 Landsborough-Maleny Road

[www.cloudsretreats.com.au](http://www.cloudsretreats.com.au)

OPEN DAILY 8am - 4pm



Above: Lily House Business Manager Jo Higgins. Right: The new Lily House premises. Lily House provides women in crisis with a loving, safe home environment where they can receive support.

## ‘Miraculous’: new home gifted to women and children at risk

LILY House has a new home for young women and children in need thanks to the generous donation of a beautiful local building.

The group was forced to relocate at the end of their lease twelve months ago. Now ‘home’ will be forever secure for vulnerable and at-risk young women and their children.

“The way a building was gifted to us last year, right when we were two days from having nowhere to go is nothing short of miraculous,” said Lily House Business Manager Jo Higgins.

The building has undergone extensive renovations to make it fit for the purpose of eventually housing five ladies and seven children.

“The work is coming along beautifully,” Jo said. “Everything feels so fresh and lovely. I think that having our own property and the security that it provides will also enable us to expand our thinking about what we can do with the young people who come to us for support.

“We will be able to teach our young women and their children a greater love, appreciation and respect for home. They will be able to have input into the yard and gardens. We plan to teach them how to grow food and prepare it, amongst other things,” she said.

“Importantly, we will also be able to teach them about generosity, gratitude and the

importance of giving back. While we have always required that our young women participate in community focussed work, we intend to emphasize that even more in future”.

The new accommodation is expected to be ready by the end of this month, but the ongoing wet weather and some unforeseen expenses have caused some delays.

“I have set up a GoFundMe account to help, and it is where people can make any contribution they are able to,” Jo said. “As you can imagine, there are always plenty of ways to spend money that is donated. For the moment though, I need to purchase fresh linen, and therapeutic resources for the children. During the rain, eight car seats were damaged, as well as our barbecue and playmats, and they will also need to be replaced”.

Lily House offers supported accommodation for vulnerable and at risk women and their children. The women may be escaping domestic violence, recovering from addiction, homeless or young pregnant girls. They are based on Christian values and offer a holistic wrap around service.

• The link to the GoFundMe account is [www.gofundme.com/f/lily-houses-forever-home](http://www.gofundme.com/f/lily-houses-forever-home)  
All donations will be very gratefully received.



Senior Student Leaders Caleb Bain, Olivia Murray, Shani Lambert and Joanna Forgeard.

## Nambour College announces 2022 leaders

NAMBOUR State College celebrated its first major milestone of the year with the successful investiture and formal recognition of its 2022 Junior and Senior Campus student leaders.

“We are truly proud of the diversity of our student leadership, their talent and commitment and are delighted we had the pleasure to mark this special occasion with parents and carers,” said College Principal Anthony Green.

Mr Green said the leaders were a credit to the support and encouragement of parents, grandparents, carers and teachers.

“These young College men and women not only make fine leaders but will undoubtedly go on to achieve great things this year. We look forward to seeing all of our student leaders’ achievements as the year progresses.”

### Senior Campus College leaders:

- Caleb Bain, Shani Lambert, Olivia Murray and Joanna Forgeard (Senior Student Leaders)
- Brogan-Lee Gingell, Bora Loab and Sharyn Knox (House Captains for Rush)
- Billie-Jade Douglas Newell, Jett Burmester and Brylie Ryan-Shackley (Freeman House Captains)
- Savannah Anderson (House Captain for Watson)
- Kylan Jesberg, Kiefer Cosgriff and Cade Watson (House Captains for Irwin)

- Boden Walker, Bonnie Stoddart, Connor Baillie, Ella Rose (Academic Leaders)
- Corrinne Sadler, Kaitlyn Forgeard, Aurelia Evans, Isla Stewart, Zane Tronerud, Olivia Smith, Lizzie Marshall, Stephanie Alexiou, Kate Bannah and Victoria Jones (Arts Leaders)
- Luca Patten, Chrissy Ahtoon Evaly and Maya Austin-Gardner (Environmental Leaders)
- Sharyn Knox and Nancy Sullivan (Murri and Islander Leaders)
- Peter Smith and Lily Teubler (Wellbeing Leaders)
- Akemi Evans (Interact Club Leader).

### Junior Campus Student Leaders:

- Aliyah Tomholt, Meadow Powlesland and Koen-Flynn Evans (School Captains)
- Tallulah Ackerman and Charli Parsons (Rush Captains)
- Lilli-Mai Ward and Ava Walker (Watson Captains)
- Holly Kilpatrick and Dumareq Miller (Irwin Captains)
- Ruby Thompson and Logan Patterson (Freeman Captains)
- Harrison Hingst and Dakota Hasted (Digital Leaders)
- Goldie Broer (Cultural Leader)
- Madisyn Ryan (Environment Leader).

## Neighbourhood Centre serves up lunch every Thursday

EVERY Thursday at Maleny Neighbourhood Centre volunteers and locals get together to prepare and serve a nutritious meal which they share with people in need.

“People who wish to come along to the shared lunch only need to provide a \$7 donation, or what they feel is reasonable, to pay for the lunch,” said Maleny Neighbourhood Centre Coordinator Rick Paget.

“The money raised is used to pay for the lunch ingredients. However we gratefully accept donations of fresh produce to put towards each shared lunch. Some of the ingredients are even grown in our Neighbourhood garden.”



Maggie Beal, Rayna Bond and Brian Nixon prepare meals for members of the community.

Everyone is welcome. Lunch is 12.30pm. The team can even do takeaways. They just ask that you phone 5499 9345 by 11.30am for take away and collection at the kitchen at midday.

## Win for Nambour Toastmaster at divisional contest

SEVERAL Nambour Toastmaster club members attended the Central Division Conference in Hervey Bay on the weekend of 12-13 March 2022 and were proud to witness our very own club member, Bradley Rowlands winning the Humorous Speech contest.

Bradley will now be competing at the next level in Cairns at the District 69 Conference at the end of April.

Debbie is also a member of the Nambour Toastmasters’ Club and did a great job as contest chair for this competition.

Nambour Toastmasters Club aims to be a supportive and fun-loving club where members challenge themselves to become confident and inspiring communicators and leaders.

They meet on the first and third Thursdays each month at the Anglican Church Hall in Currie Street, Nambour from 6.30pm for a prompt start of 7pm to 9pm. There is lots of



The photo shows Bradley accompanied by second and third place winners Claire Lowe, left, and Hilary Saxton and, Area 16 Director Debbie Holly (far right).

free parking available. Join us for a meeting or two to see what we can offer you.  
► For further information please contact Wendy McLean 0491113145.

# HAPPY HEALTHY SMILES

## \$199\*

welcome offer

\*New patients only. T&Cs available online. Valid to 30.03.22.

## Blackall Terrace Dental

N A M B O U R

### New patient welcome offer

TOTAL COST: \$199\*

- Comprehensive exam
- Oral cancer screening
- Intraoral photography
- All necessary x-rays
- Scaling & polishing
- Topical fluoride
- Treatment planning

Call to book or go online  
**(07) 5441 3583**  
[blackallterrace.com.au](http://blackallterrace.com.au)

Scan to book your next visit.

# Support for flood disaster



Ted O'Brien visited Gordon McWilliam at Kenilworth Free Range Farm last week to see the damage caused by the recent flood.

THE Sunshine Coast was one of the first places to be inundated by the heavy rainfall and flash flooding which claimed the lives of 19 people in Queensland and wreaked havoc across the coast and hinterland.

In response, Federal Member for Fairfax Ted O'Brien said funding had been activated to support impacted communities on the east coast.

Mr O'Brien said he had been visiting residents and businesses to assure them that help was available.

"The floods hit hard and people are hurting," Mr O'Brien said. "Lives have been lost, properties damaged, and businesses disrupted."

"That's why the federal government immediately sprung into action and activated a number of disaster recovery grants to provide relief for impacted individuals, businesses and community groups."

Funding from the federal government includes the Disaster Recovery Payment, a lump sum of \$1000 for eligible adults and \$400 for eligible children, as well as the Disaster Recovery Allowance which provides up to 13 weeks of support at the current JobSeeker rate.

A \$558.5 million support package has also been negotiated between the federal and state governments to help Queensland small businesses, farmers, not-for-profit organisations, and sporting and community clubs.

Through this jointly funded package, demand driven grants of up to \$75,000 for primary producers, up to \$50,000 for affected small businesses and not-for-profit organisations, and \$20,000 for sporting and community clubs and associations are available to help flood-affected communities get back on their feet.

A further \$1 million has also been provided to numerous Councils to provide immediate relief to fund clean-up and recovery activities - including the Sunshine Coast Council.

To enable impacted residents to easily navigate support payments, Ted O'Brien has created a consolidated list of all available funding support and information.

"Despite the extraordinary resilience and humility of those impacted, people need help and they need to know where to go to get it. Please head to my website [www.tedobrien.com.au](http://www.tedobrien.com.au) and click flood assistance."

As of March 17, more than \$862 million in Disaster Recovery Payment (AGDRP) and Disaster Recovery Allowance (DRA) have been paid for those in urgent need.

► Eligibility criteria applies and different grants will be open for different time periods. This information is all located on Ted O'Brien's website. If you, or someone you know, needs support head to [www.tedobrien.com.au/flood-assistance/](http://www.tedobrien.com.au/flood-assistance/)



Chony Bowden works with Bruno Manzoupo on a painting. Chony will be running visual arts workshops for kids in Yandina.

## Classes to inspire young artists to bloom

YANDINA'S Stevens Street Gallery and Chony's Art Room are combining to present a local art school for children aged 7-13 years.

Facilitated by local artist Chony Bowden, classes will run from April 19 encouraging students to explore a variety of materials, art techniques and styles that inspire the inner artist to bloom.

"I have been running visual arts workshops on the Coast for people with disabilities for some time," Chony said.

"Then I got together with Toni Eggleston from the Steven Street Gallery and we both loved the idea of providing a space to inspire children to explore their creativity."

"The content and format of our workshops will be unique to the Coast," she said.

"At a foundational level, we will be giving our students a broad understanding of what art is. And typically, on a two week rotation, the children will focus on a specific medium."

"We will cover drawing and sketching skills, acrylic and watercolor, a mixed media work of art, intuitive mark making with inks, and three dimensional sculpture."

"The workshops will be embedded with music and a mindful approach to art making. In combination, these are incredibly beneficial for well being and mental health."

Chony is an award winning, QCT-registered visual art teacher with over 20 years teaching experience nationally and internationally.

► To book or enquire go to [www.chonysartroom.com](http://www.chonysartroom.com) or [chonysartroom@gmail.com](mailto:chonysartroom@gmail.com)

# SACRED Body

INITIATE TRUE WELL-BEING

Relax Re-Connect Rejuvenate

**Massage**  
**Far Infrared Sauna**  
**Waxing**  
**Lash & Brow Tinting**  
**Chakrapuncture**

0419 175 425 | [sacredbody.com.au](http://sacredbody.com.au) | f @

8 LITTLE MAIN ST PALMWOODS

## Groups, pollies and Sandra join forces in Great Walk for Parkinson's

APRIL is Parkinson's Awareness Month so Home Instead, in conjunction with Parkinson's Queensland, Restoring Hope Parkinson's Therapy, members of local Government & The Maleny Movement Disorder Clinic, is supporting *The Great Walk for Parkinson's 2022*.

With the generous support of Montville Mist Springwater and The Barn on Flaxton, 10 walkers made up of specialised care services, our local MP's (Andrew Powell for Glass House & Rob Skelton for Nicklin) and people from the local Parkinson's community, will be walking from Mapleton on April 4 to camp overnight in the bush, before finishing up on Tuesday April 5, at our Picnic for Parky's event.

One of those walking is Sandra who was diagnosed with Young Onset Parkinson's disease, nearly 3 years ago at the age of 45.

YOP is a Parkinson's Disease condition which affects people younger than 65 years of age.

Her vision is to promote a greater awareness of Parkinson's disease across the wider community, coupled with making Parkinson's sufferers more aware of the support offered by the Young Onset Parkinson's community.

When Sandra was asked why she's doing The Great Walk For Parkinson's 2022, and trekking 30 kilometres over two days, she replied: "I'm a glutton for punishment."

"I'll be in pain and I'll be questioning if my body will cope until the end, but I'm confident that my willpower will get me through, as I'm doing this walk to promote a greater awareness of Parkinson's and Young Onset Parkinson's

disease (YOPD), and available mental health and wellbeing support measures, alongside the great work of Restoring Hope Parkinson's Therapy and Parkinson's Queensland."

The goal is to raise funds and awareness for Parkinson's Disease, to reduce stigma and enhance resources and education for a disease that affects over 130,000 Australians.

► Book Tickets now via Eventbrite: [www.picnicforparkys2022.eventbrite.com.au](http://www.picnicforparkys2022.eventbrite.com.au). Donate via Raisely.com: [www.the-great-walk.raisely.com](http://www.the-great-walk.raisely.com). Follow the adventure via Instagram: [www.instagram.com/homeinstead\\_sunshinecoast/](http://www.instagram.com/homeinstead_sunshinecoast/)



Sandra was diagnosed with Young Onset Parkinson's disease, nearly 3 years ago at 45.

Home Instead PROUDLY PRESENTS

## THE GREAT WALK FOR PARKINSON'S

WALKING FOR AWARENESS APRIL 2022

**PICNIC FOR PARKY'S**  
 1:00pm | Sat APRIL  
**RSVP NOW!**  
 MEET THE WALKERS  
 FREE MORNING TEA  
 INFO STALLS

DONATE NOW  
 HELP US TO RAISE FUNDS & AWARENESS FOR PARKINSON'S DISEASE AS WE WALK THROUGH THE WILDERNESS

SUNSHINE COAST HINTERLAND  
 RESTORING HOPE Parkinson's & therapy  
 parkinsons QUEENSLAND

# Freeze & Heat Meals

*Delivered to your doorstep every Friday!*



## SPECIALS

AVAILABLE UNTIL 28.04.22

### 21. Greek lemon chicken

In fresh herb & white wine broth served with braised vegetables & rice



### 22. Lamb moussaka

Baked lamb lasagne layered with rich tomato meat sauce & layered with eggplant, potato & zucchini with white béchamel & parmesan



**Single Serve**      **Double Serve**  
\$9.90                      \$18.00

GF = Gluten free | DF = Dairy free | VEG = Vegetarian

## MAIN MEALS

	Single Serve	Double Serve
1. <b>Marinated seed mustard &amp; rosemary roast beef - GF DF</b> Served with roasted vegetables & gravy	\$9.90	\$18.00
2. <b>Crispy skinned lemon &amp; herb roast chicken - GF DF</b> Served with roasted vegetables & gravy	\$9.90	\$18.00
3. <b>Tender roast pork loin - GF DF</b> Served with apples, roasted vegetables & gravy	\$9.90	\$18.00
4. <b>Beef lasagne</b> Lean beef bolognese layered with bechamel, pasta & cheese	\$9.90	\$18.00
5. <b>Oven baked beef rissoles &amp; gravy - GF DF</b> Served with buttered potatoes & seasonal vegetables	\$9.90	\$18.00
6. <b>Braised steak &amp; mushrooms in gravy - GF DF</b> Served with herb butter potatoes & seasonal vegetables	\$9.90	\$18.00
7. <b>Corned beef sauteed onion &amp; fresh herb white sauce - GF</b> Served with steamed vegetables	\$9.90	\$18.00
8. <b>Savoury mince - GF DF</b> Lean beef gravy served with buttered herb potatoes & steamed vegetables	\$9.90	\$18.00
9. <b>Sticky teriyaki pork &amp; asian greens - DF</b> Served with rice	\$9.90	\$18.00
10. <b>Cottage pie - GF DF</b> Lean beef & vegetables sauteed in gravy & baked with creamy mash potato & seasonal vegetables	\$9.90	\$18.00
11. <b>Malaysian satay chicken - GF DF</b> Mild creamy curry served with rice	\$9.90	\$18.00
12. <b>Braised pork, Italian sausage &amp; butter bean stew - DF</b> Mild, served with couscous	\$9.90	\$18.00
13. <b>Stirfried chicken &amp; hokkien noodles - DF</b> Stir fried in asian sauce with peanuts	\$9.90	\$18.00
14. <b>Creamy coconut Indian veggie &amp; chickpea curry - GF DF VEG</b> Mild, served with rice	\$9.90	\$18.00
15. <b>Vegetable lasagne - VEG</b> Seasonal vegetable in napolitana sauce with bechamel, baked with cheese	\$9.90	\$18.00
16. <b>Spinach &amp; ricotta cannelloni pasta - VEG</b> With napolitana sauce, baked with cheese	\$9.90	\$18.00
17. <b>Pork &amp; beef italian style meatballs</b> With red wine, tomato & herb fettuccine, topped with parmesan	\$9.90	\$18.00

## SOUPS

	Single Serve (Large Portion Size)
18. <b>Asian chicken sesame vegetable noodle soup - GF DF</b> Tender chicken pieces sautéed with seasonal Asian vegetable slow cooked in chicken broth with sesame and vermicelli noodles	\$6.90
19. <b>Hearty pea &amp; ham soup - GF DF</b> A thick soup of braised ham slow cooked split peas, sautéed vegetables & fresh herbs	\$6.90
20. <b>Cream of roasted sweet pumpkin soup - GF DF</b> A wholesome soup of roasted sweet pumpkin, sweet potato, sautéed onion, celery & carrot & coconut cream	\$6.90

## HOW TO ORDER?

Call 07 5445 7044 OR order online via the link below:

<https://www.rangecare.com.au/freeze-and-heat-meals>



Minimum order of 5 meals applies. Customers over the age of 65 and NDIS participants are eligible for Free Delivery.

Proof of eligibility may be requested by the RangeCare staff. All other orders will be subject to a \$15 delivery fee.

## Bli Bli land set aside for sport and recreation

ALMOST 100 hectares have been set aside for future sport and recreation at Bli Bli.

The 97 hectares at Godfreys Avenue, Bli Bli, was purchased by Sunshine Coast Council and will provide added opportunities to the existing network of council owned and managed sport and recreation spaces.

Sunshine Coast Council Division 9 and Environment and Liveability Portfolio Councillor Maria Suarez said the properties, located just north of the Maroochy River, would help council maintain the rate of four hectares sport and recreation land per 1000 residents, a target set in the Banksia award-winning Environment and Liveability Strategy.

"It will also ensure public open space is distributed equitably throughout the Sunshine Coast local government area so everyone has access," Cr Suarez said.

"Sport and recreation spaces are fundamental to our region's future and this purchase demonstrates council's commitment to proactively plan and deliver long-term projects which protect our region's environment and liveability, and provide the active, healthy lifestyle we all value.

"This strategic acquisition takes a long-term view as to what our community will need in respect to providing sport and recreation facilities as the population grows.

"It will be a number of years before residents will see facilities coming out of the ground and there remains a great deal of planning and funding to be sought before this project officially commences.

"Open spaces also help council mitigate the impacts of climate change by contributing to managing flood waters in extreme weather events.

"These lands, located within the Blue Heart, build on the important work already done in the area and will contribute to the environmental, social and economic co-benefits the project seeks to achieve."

The Blue Heart is an area of more than 5000 hectares on a natural floodplain in the Maroochy River catchment and includes approximately 1400 hectares of public land.

In addition to the recently purchased Godfreys Avenue land, it also includes Council's Coolum Creek Environment Reserve network, the Queensland Government's Coolum Creek Conservation Park, and Unitywater's Yandina Creek Wetland.

Cr Suarez said a key objective for the Blue Heart included protecting the Maroochy River floodplain as a flood storage area.

"It also seeks to provide opportunities for sport and recreation parks and sportsgrounds for the community to enjoy," Cr Suarez said.

"This purchase aligns with the Sunshine Coast Community Strategy 2019-2041 which aims to empower our community to live healthy and active lifestyles.

"It's through integrated, strategic planning and innovative projects that council will realise our vision for the Sunshine Coast: Australia's most sustainable region - Healthy. Smart. Creative."

► To find out more about Blue Heart, visit Council's website: [sunshinecoast.qld.gov.au/blueheart](http://sunshinecoast.qld.gov.au/blueheart).

## Business in Focus



From left, Brett and Ken Mills. The Nambour and Maroochydeore dealerships will remain in the safe hands of Ken's son Brett Mills and his wife Caroline.

## Ken Mills retires but Brett will continue the family tradition

If you live locally you'll be sure to recognise the name Ken Mills Toyota.

At the heart of the dealership is Ken Mills himself. Ken is retiring from the Kingaroy business, stepping down as Dealer Principal after nearly 30 years.

The Nambour and Maroochydeore dealerships will remain in the safe hands of Ken's son Brett Mills and his wife Caroline. They purchased the "busted and broken" dealerships in 2002 and transformed them into the progressive, innovative outlets they are today. The Kingaroy and Sunshine Coast dealerships are independently operated as separate companies but share a trading name and a philosophy to invest in good people, create a trustworthy culture, offer exceptional guest experience, embrace product innovation and support the local community.

Brett attributes his lifelong Toyota obsession and his robust personal, business and community values to his parents, Ken and Sheryl.

Brett and his sister Tanya grew up on their parents' 10 acre property near Gympie. The hard-working family looked after the hobby farm as well as running the local Toyota dealership. Brett spent his formative years enjoying the Australian farm life and it was on the farm where his love of Toyota and his entrepreneurial streak blossomed.

Brett tells childhood stories of making money "up selling" calves to neighbours and outdoor adventuring with the "big green esky" to Fraser Island after collecting blocks of ice, that would last for weeks, from the Gympie Butter Factory.

"We would travel to Fraser in a short 40, my sister and I sitting in the back, on roles of foam which would later become our beds," said Brett. "We be up there for weeks at a time."

Ken got innovative and still holds a pattern for converting Landcruiser tray backs into Grand Tourer buses which were used by tour operators on the Island and places like the Northern Territory.

Brett remembers getting his hands dirty building a Toyota Celica with his dad for his sister (building runs in the family) and learning to drive in a Toyota FJ45 Landcruiser.

### Brett's Toyota Journey

Brett worked in the Kingaroy dealership alongside his father from 1996 - 1999, learning his way around and absorbing everything Toyota, where he has spent most of his working life.

After Kingaroy, Brett landed his dream job as National Dealer Planning Manager in Sydney where he met Caroline. He used his time with Toyota to grasp a clear understanding of how the dealer network operates. He fostered life-long relationships and learned how the manufacturing, supply side of the global business works.

Armed with this additional knowledge and with guidance from Ken, Brett in 2002 became Australia's youngest Toyota dealer at just 27.

### Ken Mills Toyota Sunshine Coast

When Brett took over the reigns at the Sunshine Coast dealerships in 2002 there were only 40 staff (10 at Maroochydeore and 30 Nambour). The sites were a mess and Brett recalls the team putting on their work clothes and cleaning the sites up. Brett found the start challenging and thanks his Dad's expertise for helping steer the business in its formative years. Brett knew the importance of having 'good people' in the business and recruited fresh blood, some of whom still work alongside Brett today.

### Challenges & Transformations

In 2008 the new Maroochydeore site was being built at the same time the Global Financial Crisis struck. This was a stagnated time for the business as the Sunshine Coast struggled with the world-wide catastrophe. However, by 2010 the Coast returned to a growth stage and Mark Pagett was employed as General Manager. Brett and Mark have worked together to build the business and its reputation since then.

The historic Nambour site had a major facelift and renovation in 2015 and Maroochydeore is currently undergoing modernisation.

### 2022 Milestones

As Ken retires from the Kingaroy dealership his outstanding efforts in the local community have been acknowledged as he was recently awarded the 2022 South Burnett Citizen of the year. He is passing the reigns to equity partner David Musch and Brett will take a more active role in the Kingaroy space.

In another Mills milestone, December will see Brett and Caroline celebrate 20 years of ownership of the Sunshine Coast dealerships.

Beyond 2022 Brett plans to continue to drive Ken Mills Toyota into the future buoyed by the dominance of the hybrids and growth opportunities on the Sunshine Coast.

## Moments in Time



Here comes the bus!

## First bus in Nambour delighted 1940s town's housewives

IN the 1940s many families didn't own a car, so housewives were delighted when Nambour's first local bus commenced business. Through the years, its route was broadened to encompass much of the town.

The Nambour town bus was employed at many other times. In 1946, the bus left Bayards Corner at 7.30pm on its way to the Palmwoods Progress Association Monster Ball where supper and dancing from 8pm to 2am were advertised. A return fare was two shillings.

A Labour Day trip to the Somerset dam in 1951 cost one pound five shillings with children half price.

It seems a bus owner had to be versatile in those times. In March 1950, this article appeared in the Brisbane Telegraph - "Owner of the Nambour town bus has despaired of the Shire Council repairing the roads. He is now employing a man to drive the bus while, armed with a shovel and grubber he goes round the bus route filling in the worst ruts and holes."

Barbara Want from the Museum said she could remember when this bus started in Nambour. "My mum and I thought it was wonderful to get a ride to town," she said. "I wish I could remember exactly how much it cost - I think the fares originally were threepence (3d) and sixpence (6d)."



## The story of Sandy the loco

THIS Malcolm Moore locomotive was one of 92 built in Melbourne during 1943 for Defence Department use hauling ammunition and other War supplies.

The locomotive (No. 1051) saw service at a Navy depot and was purchased from War Disposals in 1948 by Nambour's Morton Central Sugar Mill.

Upon arrival at the sugar mill, loco drivers chalked the name 'Sandy' on a piece of wood and attached it to the front of the loco in honour of their workmate, QX68|5 Sgt. Leslie (Sandy) Plater who died of wounds on September 2 1942 at El Alamein, Egypt.

In the 1960s 'Sandy' became the 'hero' of a childrens story book Sandy The Cane Train written by Jean Chapman.

Upon retirement 'Sandy' was placed on display in a park at the Morton Mill entrance and when the mill closed in December 2003 'Sandy' was donated to the Nambour and District Historical Museum by Morton Mill owners, Bundaberg Sugar Ltd.

Restoration of 'Sandy' to display condition in 2004/2005 was made possible by a grant from the Department of Veterans' Affairs Saluting their Service program. Other contributions came from the Plater family and Mrs Jean Chapman.

Fittingly, the restoration was carried out by Sandy's nephew, Clive Plater, the current museum president.

LET'S GET READY TO RUMMAGE

BRING YOUR SUITCASE PICNIC CRUG HATS & SUNSCREEN

27<sup>TH</sup> MARCH 10AM - 2PM

The Nambour Suitcase Rummage

Fun in the Sun \$5

LIVE DJ MUSIC

ALL THINGS VINTAGE & HANDMADE

28 MILL STREET NAMBOUR

HAMBOUR TRAM CO

BOOKINGS FOR YOUR SUITCASE SPOT ARE ESSENTIAL VIA DIRECT MESSAGE TO NAMBOUR TRAM CO ON FACEBOOK

## Rock and Roll Dance at Belli

BELLI Hall is holding a rock and roll dance on Saturday March 26 at 6.30pm. Cool cats will be running the evening, with a lesson at the start. Cost is \$25 a couple. Dinner and drinks will be available. Come and join us for a great night of fun. Call 0448 948 198 for enquiries.

## Palmwoods Devils training

PALMWOODS Rugby League invite anyone who is interested in playing for the Devils in the 2022 season to come to training at Briggs Park Jubilee Dr Palmwoods on Tuesday & Thursday evenings from 5.30pm. For information phone 0479 132 834 or look the club up on Facebook.



# Impacted by the recent *floods?*

Government **funding** is available.



SCAN THE QR CODE  
for more information

or visit [tedobrien.com.au/flood-assistance](http://tedobrien.com.au/flood-assistance)



**Ted**  
**O'BRIEN** MP  
Federal Member for **Fairfax**

5479 2800  
[ted.obrien.mp@aph.gov.au](mailto:ted.obrien.mp@aph.gov.au)

Authorised by Ted O'Brien MP, LNP, 17 Southern Drive, Maroochydore QLD 4558.



## Montville's tiny tennis club with a big heart keeps attracting players and hitting winners

EARLY last year Montville Tennis Club – established in 1925 from an old pineapple farm on Jinibara country – was revitalised.

It was upgraded with synthetic grass tennis courts, some new court lighting and a wonderful new tennis pavilion.

The fresh energy inspired a throng of new people to get involved, play tennis for the first time or – after having been away from tennis – to have coaching and be part of an active and vibrant community.

Since then, the club's numbers have expanded and late last year Queensland's oldest tennis club, The Range Tennis Club of Toowoomba, played a competitive social tournament in Montville.

Toowoomba carried the day and took home with them the perpetual trophy, *The Passionate Clubs Cup*.

The courts are in use every day of the week, either by visitors, by local school children and adults having tennis coaching, by parents after school drop-off, or by locals forming social groups. The pavilion is even used by a group of local musos for jam sessions while their children are having tennis lessons.



Conditions today, above, have improved since the 60s, below, at the club on land that was once a pineapple farm.

### President's Cup this weekend

On Sunday March 27 from 12.30pm to 4pm, the Club is holding its annual President's Cup. Players from Montville and Mapleton Tennis Clubs will compete, with the winner's name being inscribed on the club's Honour Board.

It will be a fun affair with lunch under the roof of the lovely pavilion built with the history of the village and the club itself in mind. A paella lunch, a drink and a hit of tennis for just \$25 per person – but you do need to book and pay before the day.

If the cup day is not for you, but you would like to give tennis a try again, bring your friends and come join the players for a Sunday morning hit, 9am to 11am. Bring your racquets and tennis shoes and get into the swing of it. Sunday social tennis is relaxed and caters to all capabilities. It's a great way to finish your week.

Any profits will go to planned upgrades of the facilities including lighting, improved fencing, court surface remediation and an online



booking system. If you would like to make a tax-deductible donation to the club go to <https://asf.org.au/donate/montville-tennis-club-rejuvenation>

► If you would like more information, or if you would like to come along to the President's Cup, email the club Secretary, Lisa Green at [montvilletennisclub1925@gmail.com](mailto:montvilletennisclub1925@gmail.com)

## Recent floods wash away another piece of our cane history

by Nambour Museum President Clive Plater

THE former Moreton Sugar Mill's lift span tram-line bridge across the Maroochy River has been substantially washed away. The bridge's future has been in limbo since it was 'heritage listed' after the mill closed in 2003 and various jurisdictions deliberated on who would actually take ownership and accept responsibility for it.

In 2020, by which time the Queensland Government seemed to have accepted ownership and responsibility, the lift span section had become so dangerous that it was removed. The removed components were saved and are now securely stored at a government storage facility.

The bridge was constructed in 1921 to connect the cane growing areas north of the Maroochy River to the mill's tramway system. The construction of the bridge saw the tramline extend to Coolum and the mill operated a pas-



Recent flood damage above, and past damage from 1947, below.



senger service between Nambour and Coolum on weekends.

This is not the first time the bridge has been damaged during a flood, about half was totally washed away in 1947 and substantial damage occurred during floods in the 1950s. This was of course when the bridge was in good condition and well maintained unlike the past 20 years when no maintenance has occurred.

Let's hope something can be preserved. It has always been a popular fishing spot so a couple of the remaining spans on the Coolum side could be made into a jetty and the previously removed lift section could be re-erected on dry land adjacent to the jetty along with relevant interpretive signage telling the history of the bridge.



Have they got it right? ... an artist's illustration of the northern end of Memorial Drive looking south, showing some of the ideas proposed as part of the streetscape improvements.

## Eumundi community's main street vision up for feedback

IT'S home to artisan treasures, rich heritage, creative arts and markets. And now Eumundi's village feel has been enhanced in a new streetscape design for Memorial Drive.

Since 2020, Sunshine Coast Council has been listening to locals to find out their vision and values for the future of their main street.

Division 10 Councillor David Law said feedback had been collated to develop the draft streetscape design which was now ready for further feedback.

"We want to continue to preserve and celebrate the heritage, character and community vision for the much-loved Memorial Drive well into the future," Cr Law said.

"From March 15 to Monday 11 April, we are asking the community, 'Have we got it right?' in translating your values and vision into the draft streetscape design.

Cr Law said feedback informed the Design

and Placemaking team of the community's priorities which included a desire for an improved pedestrian experience, artistic lighting features and enhancement of memorial fig trees.

There was also strong support for pedestrian linkages from Memorial Drive to Napier Road to improve access to existing car-parking areas. People also prioritised on-street parking and footpath dining. "We also know the community would like to create a cool, shady and green street, revitalise surfaces and spaces, make parking easier and provide places to sit and socialise."

Visit council's Have Your Say website to view the \$1.77 million Eumundi Streetscape Placemaking design and construction project and complete the survey online before April 11. Final designs will be produced, and the actual construction is scheduled to take place in the 2022/23 financial year.



Nambour Tilt Espresso's Alec Galvin: "My focus is on making Tilt a coffee destination for true coffee aficionados."

## 'When you get right down to it, making excellent coffee is a fine art'

A fascination for the chemistry and techniques of brewing beautiful coffee motivated the new owner of Nambour's Tilt Espresso, Alec Galvin, to take on the business late last year.

"I had been working as a barista at Tilt since February 2021, so it was a pretty easy transition," said Alec.

"I think what prompted me to become a barista is that I just got tired of making myself bad coffee," laughed Alec.

"When you get right into it, making excellent coffee is a fine art. There are so many variables, including coffee blends, brewing techniques and varieties of milk, I didn't realise how much of a rabbit hole I was going into when I first started."

While Tilt Espresso had become a local

favourite because of the baking of previous owner Dee, Alec has chosen to simplify the menu.

"I have kept the simple, fresh and easy food options such as burgers, wraps, sandwiches, cakes and slices," he said. "All the menu options that regulars really love."

Alec uses Moondog blend from Eumundi Coffee and has also added a couple of single origin filter coffees.

"I will be offering high quality espresso based drinks and now my focus is on making Tilt a coffee destination for true coffee aficionados. Because there is absolutely nothing better than a good cup of coffee."

► Tilt Espresso, 3 Rigby Street Nambour. Phone 0402 310 304.



**SPEAK UP NOW**

**Stop Domestic and Family Violence**

**Maleny & Blackall Range**

**1800 600 636 DV Connect - Mensline**

**1800 811 811 DVConnect - For Women**

**1800RESPECT**

**13 11 14 Lifeline**

**1800 55 1800 Kids Helpline**

©: [speakupnowstopdomesticviolence@gmail.com](mailto:speakupnowstopdomesticviolence@gmail.com)

Like us on Facebook

[facebook.com/SpeakUpNowStopDomesticViolenceMalenyBlackallRange](https://facebook.com/SpeakUpNowStopDomesticViolenceMalenyBlackallRange)

## Zonta invites scholarship applications

ZONTA Club of Blackall Range is offering women tertiary students the opportunity to apply for two scholarships in 2022. Each scholarship is worth \$1500 and applications can be obtained by emailing [scholarship@zontablackallrange.org.au](mailto:scholarship@zontablackallrange.org.au).

One of the scholarships has been sponsored by member Susan Brandt on behalf of her Maleny real estate firm, Brandt and Bernhardt.

Chair of the club's scholarship committee Linda McElrea said Zonta had been committed to the education of women for more than 100 years.

"Zonta International (ZI) was established in 1919 in order to 'encourage the education of girls', and innovative action for the time. From this first step ZI has extended its influence throughout the world and is now a major force for the empowerment of women in every aspect of their lives, working with the United Nations in developing countries as one of only 146 NGOs with consultative status.

"Currently a significant program is committed to the eradication of family and domestic violence, and education is a major element in this. ZI gives scholarships at international level to girls in high school, graduate and post graduate level; and most clubs provide funds for their own scholarships to aid girls from their local areas.

"Zonta Blackall Range has for many years provided tertiary scholarships for students finding difficulty in funding aspects of their study, and some of them have progressed to amazing careers.

"One of the criteria is that winners give a talk to the club after the year in which they use their scholarship and we are delighted with their achievements," said Linda.

Awardees fields of study are varied, from teachers and educators, though law, medical



President Ann Koenig and Committee Chair Linda McElrea with Bachelor of Laws student Talia Rosa-Denham.

science, and marine biology to tertiary level students in jewellery and ceramics.

The applicant must have completed one year of study at a university, college or TAFE and show how their career choices may promote the wellbeing and advancement of women and girls.

She may be a new second year or a post graduate student, or a woman who has worked in her field for a number of years and wishes to take up further study to advance her qualifications.

A recent winner, Lisa McDonald, attributes her offer of a contract to write a series of teacher training modules to the use of her award towards an internship at a West Java refugee learning centre.

Applicants must be either a permanent resident of the area covered by the Zonta Club of Blackall Range or born or raised in this area. It includes the Sunshine Coast Hinterland from Maleny to Kureelpa, and includes Conondale, Kenilworth, Palmwoods and Landsborough.

► The committee urges applicants to submit their forms as soon as possible as competition is considerable and entries close on April 30.

## Editor wins prestigious award

VOLUNTEER editor of the *Mapleton Pop-Up News* Nita C Lester has won the 2022 annual Zonta Blackall Range Woman of Achievement award for years of service to the Range community.

Zonta President Ann Koenig announced the winner at a Dusk on the Deck function to celebrate International Women's Day (March 8) at the Maleny Community Centre, and presented her with a framed certificate and a Zonta rose.

"Zonta International (ZI) has been committed to improving the status of women throughout the world for more than 100 years, and in 1984 chose the Zonta rose as its symbol of friendship. The propagator, R Harkness, originally named it Hartanna Princess Alice, but donated the yellow hybrid tea rose to Zonta to become its world-wide symbol of friendship. In 1998 ZI nominated International Women's Day as Zonta Rose Day, when Zontians traditionally present a yellow rose to a special woman.

"We were delighted to present our potted Zonta rose to this year's recipient, Nita C Lester, as she is a practicing Queensland Government botanist," she said.

Nita Lester is best known in her local area of Mapleton, where she edits the *Mapleton Pop Up News* every week, has worked in a volunteer capacity at the Mapleton Community Library for many years, and given many workshops in design and botanical art throughout the region and beyond.

Currently she is spending quality time with Blackall Range Care Group as a director, and as vice president of the Blackall Range Kindergarten. Both roles focus upon the care of others and the importance of community.

A PhD of Griffith University, Nita has written papers on relationship building specifically in the area of education and on the development of assessment and resources material with



Three Zonta Women of Achievement: Pat Habner 2019, Nita Lester 2022 and Norma McLeod OAM 2018.

teachers. She is productive in the preservation and conservation of Australian biodiversity in flora and fauna.

Her second PhD based on waterlily research recorded the importance of the care of the landscape surrounding inland waterways of Australia.

Current serving Zontians are not eligible for the award, but Nita is a former member of the Blackall Range club, and had been part of the sub-committee that organised the inaugural event in 2016, said President Ann.

"Nita is an artist and she designed the special invitation we selected at that time, featuring a Zonta rose, and we still use it today. Not only that, she also won the international Adobe Graphic Design Award for our invitation, so we are very pleased that we have been able to honour her this year," she said.

Dusk on the Deck is a free event Zonta Blackall Range hosts each year as a thank you to the community that supports it and as a showcase of the work of Zonta International. It was supported this year by sponsors, Lember and Williams Law, Judi Coey Optometrist, Brandt and Bernhardt Real Estate and Rosetta Books.

► Women interested in Zonta Blackall Range can access the website [www.zontablackallrange.org.au](http://www.zontablackallrange.org.au) on Facebook or by contacting the club at [info@zontablackallrange.org.au](mailto:info@zontablackallrange.org.au)

## Passion and talent, artist launches first book

A watercolour artist with a passion for cars, sharks, boats, planes, police cars, emergency vehicles, houses, apple trees and UFOs will hold a book launch and signing at The Little Book Nook in Palmwoods on May 4.

"Gary is a delightful character living under his mother Kerry's care in Buderim," said Art therapist Julia Peddie who is working with Gary and supporting him to promote his artwork.

"When he turned 18 Gary changed his name to Gary Shark Bug by deedpoll and launched his artistic career over the last decade.

"Gary has a distinctive style, featuring his two main obsessions ... sharks and bugs. That's VW Bugs not the insect!"

Gary has his own black VW convertible, a SuperBug VWS. His chauffeur (Kerry his mum) and Gary can be seen around the streets of Buderim.

► Gary's book is for sale at The Little Book Nook in Palmwoods, and is soon to be officially launched with a book signing on Wednesday May 4 from 10am-12pm.

## Arts & Craft group's Autumn Fair will be a hoot!

THE Sunshine Coast Arts and Craft group is holding their autumn Fair on the weekend of 30 April/1 May at the Montville Village Community Hall starting at 9am each day.

"Many wonderful locally handmade items will be for sale (see picture), as well as a yummy variety of homemade goodies at our onsite café," said SCAC Secretary Julie Thomson.

"Don't miss out on grabbing some tickets in our amazing raffle - you could win two nights accommodation at the Montville Mountain Inn plus other terrific handmade items."

"Come along and pick up something lovely for your mum for Mother's day, or find something perfect for yourself. We hope to see you there."



## Trek For Parkinsons starts this Sunday

THE 2022 Trek For Parkinsons will be an even bigger challenge than previous events. It is due to begin with Mt Ngunnun this Sunday at 6am.

A teams event, to be completed anywhere in Australia, climbing 20,000 metres over the month of April to coincide with World Parkinsons Day on the 11th April.

On the Sunshine Coast we will be climbing, Mt Coolool, Mt Ngunnun, Mt Pamona, Mt Beerwah, just to name a few.

Spokesperson Gary McKitterick Gillett said: "As a teams event we are hoping to appeal to a wider audience and spread the word about Parkinsons Disease, each of us will achieve about 5,000 M an ideal preparation before trekking to EBC in May.

"Our efforts are to help raise funds for Shake It Up Australia Foundation for Parkinson's Research and Parkinson's Disease research in Australia. Our goal being to raise \$10,000."



Official Book Launch & Book Signing with artist & author Gary Shark Bug

**Wed May 4th**  
10am-12noon

'Gary Shark Bug's Monster Truck Hijack!'  
books, art prints & originals

**GARY SHARK BUG'S MONSTER TRUCK HIJACK!**  
Story and Illustrations by Gary Shark Bug

The Little Book Nook  
at The Little Book Nook, Shop 5, 4-6 Little Main Street, Palmwoods

**EASTER MOVIE NIGHT**  
SATURDAY 2<sup>ND</sup> OF APRIL 2022

FREE EVENT!

FUNDRAISING INITIATIVE FOR THE PALMWOODS STATE SCHOOL P&C

GATES OPEN AT 6PM | MOVIE STARTS 6:30PM

BRING YOUR PICNIC BLANKET AND PILLOWS  
EASTER RAFFLE ON THE NIGHT  
FOOD AND DRINKS AVAILABLE

PROUDLY HOSTED BY  
MPG LEIGH MARTINUZZI | PALMWOODS STATE SCHOOL P&C

Live Local

# Real Estate



## Family-friendly, neat & tidy brick & tile

### AGENT'S CHOICE: 1 Killarney Crescent Nambour

THIS solid brick and tile property is neat as a pin on a 700m2 corner block in the popular Rolling Meadows estate.

It has been tightly held since 1997 by the same owner and is now vacant and rent-ready for an investor, or for an owner-occupier to move straight into and call 'home'.

Across a single, light-filled level, the home comprises three bedrooms, two bathrooms,

two separate living areas, central kitchen, north facing alfresco patio, separate laundry, and double carport.

Freshly painted throughout, other features include split system air-conditioning in formal lounge, ceiling fans, security screen doors, separate bath and shower in main bathroom, direct patio access from master bedroom, lock-up tool shed, and a pleasant hinterland outlook from its elevated position.

Inside and out, the home is an easy-care

design and the gardens also relatively low maintenance, with just a regular mow needed to keep them looking tidy; there is plenty of room for children to play and a fabulous neighbourhood park/playground just 350 metres away for the kids to make new friends.

Formerly rented, this is an appealing property to add to any investment portfolio and in this tight rental market, securing a tenant and guaranteeing 100% occupancy is not an issue.

Whether purchasing a property as an invest-

ment or to live in – this is a truly lovely home in a sought-after family-friendly pocket of Nambour, surrounded by quality homes on generous sized blocks.

Located within walking distance to Nambour Christian College and to Nambour town centre, you benefit from quick, easy access to major amenities, yet are still tucked away in a quiet, leafy neighbourhood.

► Contact REMAX Nambour's Tristan Brown on 0403 665 643 or John Tobin on 0478 664 546.



Marianne Riley-Wilkes, Roger Loughnan and Monica McLaren ...  
"We have been around long enough to know that this is a cyclical industry and all we ever do is provide the best service we can to the community we love".

## Roger Loughnan team announced 'Rate My Agent' Agency of the Year

THE team at Roger Loughnan Real Estate in Mapleton have recently been honoured with a 'Rate My Agent' Suburb Agency of the Year award for 2022.

"It has been lovely to be recognised in this way," said Roger Loughnan.

"I am not sure how the feedback is collated and measured, but platforms like Rate My Agent give people the opportunity to give agents feedback and it is nice to see that people recognise the effort you put in for them to get the best results when they are buying or selling a property".

Roger has been in real estate on the range since 1998 and has been through some of the more challenging times in real estate as well.

"We are currently in what I would describe as a freakish moment in our industry," Roger

said. "Certainly, there is money to be made but like every party, there will also be a hangover.

"We have been around long enough to know that this is a cyclical industry and all we ever do is provide the best service we can to the community we love".

With over half a billion dollars in gross sales involving close to 1000 transactions, the team's knowledge of the district regarding property is comprehensive.

Markets include Flaxton, Mapleton, Montville, Dulong, Kureelipa, Obi Obi, Balmoral Ridge, Kenilworth, Maleny, North Maleny, Coolabine, Kidaman Creek, Witta and Hunchy.

► The agency is at Shop 2 / Cnr Post Office Road & Obi Obi Road, Mapleton. Phone: 5478 5288.



## Highset portfolio pleaser or entry level delight!

### AGENT'S CHOICE: 9 Dandenong Street, Burnside

THIS highset home tucked away in an established elevated pocket of Burnside, just a short walk to local schools and shops, offers easy-care living on a north-east facing 625m2 corner block, with masses of room for onsite parking and plenty of room for children and pets to play.

The upper level comprises a front, east facing deck with pleasant outlook, three bedrooms, modern bathroom plus separate toilet, open plan living, light-filled kitchen, and rear deck; the laundry and lock up garage are underneath in addition to masses of multipurpose space perfect for a second living area.

Split system air-conditioning in the living room, ceiling fans, hardwood timber floors, security screen sliding doors, electric cooktop/oven, and dishwasher – are existing features of note. The home is comfortable and cosy.

The garden is low maintenance with just a regular mow required to keep it looking neat and tidy; there is a dedicated parking spot perfect for a boat/trailer at entry, and there's also driveway access through to side yard for extra

parking.

Currently tenanted on a periodic lease, vacant possession can be made available for an owner occupier; an investor may wish to retain current tenants or negotiate a new lease. Rental properties are extremely scarce on the Sunshine Coast and are attracting high yields and vacancy rates are at an all-time low.

Located approximately 130-metres to the rear entrance of St John's College and 20 minutes' walk to Burnside Primary and High, Nambour Special School, childcare, and TAFE – plus only 10 minutes' walk to the local shops with a grocery store, bottle shop, cafes and takeaways; and just a short drive to town amenities, convenience is another box ticked.

Burnside is a family-friendly, leafy suburb that continues to grow in popularity as an increasing number of buyers recognise the value, convenience, and safe, quiet suburban living it offers. Welcome to your new home, you will love living here.

► Contact REMAX Nambour's John Tobin on 0478 664 546 or Frederic Tober on 0402 001 179.

# MALENY & HINTERLAND REAL ESTATE

SALES | PROPERTY MANAGEMENT | COMMERCIAL



## Balmoral Ridge

3 3 2

Bergman House is the quintessential Sunshine Coast Hinterland home; panoramic views, architecturally designed, very private, and unique in every way. From every room there are views of mature plantings and an attractive green vista. However, it's the view from the master bedroom and living areas of very pretty valleys, and beyond to Buderim and Mount Coolum that are stunning. From the minute you arrive at this property you will feel how special this property is. Sliding timber doors with stained glass accents have been used throughout the home to offer

light and breeze and connection to the outdoors. Boasting three en suite bedrooms that offer separation but also connection to the main living and entertaining areas, this home is the ultimate entertainer to gather with envious family and friends. There is also a large separate office and a staircase within the property that leads to the perfect artist's or writer's retreat where you'll find amazing views on offer and feel like you are amongst the landscape and nature. A property of this calibre, style, privacy and beauty must be inspected to truly appreciate all that is on offer.

**For Sale** Contact Agent  
**Inspect** By Appointment Only  
**Rodney Millett**  
**0477 702 073**  
rodney@malenyrealestate.com



## 2 Snowwood Avenue, Maleny

5 2 2

Here is the opportunity to live just a two-minute drive from the idyllic township of Maleny and own this truly unique home. Offering endless space; there are so many living and entertaining options for your family and guests. Set across a number of levels, there are five bedrooms in total with the addition of a separate room connected via the back deck. Currently used as a study; it offers the perfect work from home scenario or the ideal guest quarters.

The kitchen forms the heart of the home and flows to the dining and lounge rooms and to the back deck. Its butter yellow Falcon gas cooktop will no doubt be the enviable talking point among visiting family and friends. Surrounded by quality homes in a sought-after area of Maleny; this home is a must inspect.

**For Sale** Contact Agent  
**Inspect** By Appointment Only  
**Rodney Millett**  
**0477 702 073**  
rodney@malenyrealestate.com



## WELCOME YOUR NEW NEIGHBOURS

### 76 Mountain View Road, Maleny

4 2 5

Located on highly sought-after Mountain View Road, just 7 minutes from the main street of Maleny, sits this low set home on a landscaped 4116m<sup>2</sup> block. Lovingly maintained and enjoyed by its current owners, this home offers the growing family, professional couple or retirees the chance to create a fabulous home to entertain and room to grow. A neutral backdrop inside the home offers the perfect opportunity to add your own personal style and design to this perfectly located and well-maintained home.

**SOLD**

By Principal  
**Rodney Millett**  
**0477 702 073**  
rodney@malenyrealestate.com



## WELCOME YOUR NEW NEIGHBOURS

### 311 Witta Road, Witta

4 2 5

Beautifully presented with stylish touches throughout, this family home in the heart of Witta offers everything you could want for your move to the Hinterland. Perfectly positioned on a 2023sqm<sup>2</sup> block, with an inground pool, you'll be just 14 minutes' drive meandering through very pretty rural roads from the bustling main street of Maleny. This stylish replica Queenslander offers 4 bedrooms, including an en suite master and large family bathroom with elegant freestanding bathtub. Entertaining will be a pleasure at this property with plenty of space to gather with family and friends; there's a large timber deck to the rear of the property, the landscaped pool and firepit area.

**SOLD**

By Principal  
**Rodney Millett**  
**0477 702 073**  
rodney@malenyrealestate.com

5494 3022

malenyrealestate.com

Maleny & Hinterland Real Estate

mhrealestateandmapletonrealty

PROUDLY A FAMILY OWNED AND OPERATED AGENCY IN THE HEART OF MALENY

# Behind every great community are the stories worth knowing.

Catch up on local news in the Sunshine Valley Gazette.  
Go to [www.sunshinevalleygazette.com.au/newsletter](http://www.sunshinevalleygazette.com.au/newsletter) to subscribe  
This is what you may have missed in the last edition ...



Homes for the homeless men. 'It's more than just a roof over their heads'  
Solid new Nambour Op Shop and Cafe doing business from the heart  
Pack your suitcases for the Nambour Rummage Sale!  
Three Montville properties to open to public for Easter Garden Festival  
Retired engineer warns Woombye of potential town-wrecking rail overpass



Deluge takes toll on hinterland roads and sports clubs  
Nambour club to host weightlifting championships at Crusher PK  
Delicious local Seasonal Set Menus return to Flaxton Gardens  
Handchimers bring music, fun and fellowship to Mapleton Hall  
Manpreet bakes cakes that taste great and they are good for you!



Ensemble Trivium to perform 'Sublime' music at Montville Village Hall  
Pacific Chamber Players present concert at Palmwoods  
The people's voices will be heard regarding Planning Scheme says Cr Law  
Majestic Cinemas to present 'haleidoscopic carnival of short films'  
Book recounts Maleny Neighbourhood Centre's history



Sundale Foundation makes sound investment in Nambour Tram terminal  
HIIT Station: Muay Thai-inspired Nambour gym really packs a punch  
What's On in the Sunshine Coast Hinterland  
Help floods in, with food for all following deluge, at Community Centre  
Japanese flute master to revisit his Maleny connections



TMR to release revised traffic calming plan for Palmwoods  
RE/MAX wins national and international agency awards  
Warriors' new look is all thanks to Sundale Community Foundation  
Maleny Men's Shed sparks creative endeavours  
AGENT'S CHOICE: 37 Oxleigh Crescent, Nambour

We're building an antidote to mainstream and social media, one inspiring local story at a time.  
Join our list to have the main stories delivered to your phone, even before the paper hits the streets.  
Go to [www.sunshinevalleygazette.com.au/newsletter](http://www.sunshinevalleygazette.com.au/newsletter) to subscribe

SUNSHINE VALLEY  
**Gazette**

# Live Local Real Estate

## Buying a home? Five questions to ask your lender

from **Matt Wall** BOQ Nambour & Hinterland Owner-Manager



TAKING the plunge to purchase your first home is a big decision and can be overwhelming. Here are a few questions you should make sure you ask your lender before signing on the dotted line.

**What's the true cost of the loan?** It's easy to be seduced by the headline rate, but there are often additional fees to take into account which can increase your overall repayments.

**Do I need Mortgage Insurance?** Unless you have a deposit of at least 20% of your purchase price, you'll likely have to pay mortgage insurance (also known as LMI). LMI is calculated as a percentage of your loan amount and varies depending on your loan to value ratio, so can be costly.

**Does the loan have special features?** Things such as offset accounts and free redraws are great ways to get more from your home loan. Not all loans come with these features, so it's worth checking!

**Can I make overpayments?** Some loans will not allow you to pay off more than the agreed amount each month - which can be frustrating if you have a windfall or bonus that you'd like to use to reduce the amount on your mortgage.

**What are the exit/break fees?** It might seem a little premature to be thinking about at this stage, but it's an important question to ask. Depending on the type of loan you end up with, the costs to end your mortgage early can vary substantially.

► If you'd like to chat about your property goals and how BOQ Nambour & Hinterland can help, pop in branch or give us a call on (07) 3000 1688 today! This article is for general information purposes only and is not intended as professional advice.



## Six-hectares ready for development

AGENT'S CHOICE: 252 Yandina Coolool Road

IDEALLY located close to the Sunshine Motorway and the Coolool Industrial Estates, this six hectare property would suit future development for a range of options including service station, commercial/industrial ventures, large warehousing, etcetera (subject to Council approvals).

► Contact the exclusive agency on 5446 7333 for further information and to register your interest. Viewing strictly by arranged private inspection only.

# Teamwork Makes the Dream Work

Richard Krausz says the real estate journey is always better with amazing people by your side.



Rated **Agent of the Year 2022** in Nambour and Coes Creek, **Richard Krausz** is ecstatic to be celebrating the 1 year anniversary of listing and selling with his dream team; Megan Manly and Simon Schroder.

This award-winning agent leads with the intention to be Nambour's most vibrant real estate team; bringing a fun and enthusiastic energy to the marketplace. Possessing an incredible synergy, Team Krausz deliver a selling experience that is guaranteed to exceed every Sunshine Coast property owners expectations.

**Thinking of selling?** Contact Team Krausz on **0422 997 810**.

**RE/MAX Property Sales**

Scan the QR code to connect with Team Krausz



Richard Krausz 0422 997 810



# Welcome Christopher Furniss

Licensed Real Estate Agent, Team Krausz

**RE/MAX Property Sales** are thrilled to welcome Christopher Furniss to our ever-growing team of outstanding real estate sales professionals here on the Sunshine Coast. Christopher will be working alongside one of our top selling agents, Richard Krausz, helping owners in **Bli Bli** achieve their real estate goals.

**Thinking of selling?** Contact **Christopher** on **0450 732 941** to schedule an appraisal on your property today.

**RE/MAX Property Sales**

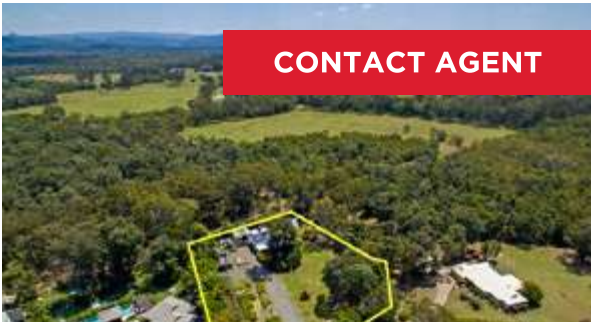
Scan the QR code to connect with our team.



Christopher Furniss 0450 732 941

# RE/MAX lists and sells more properties than any other agency in Nambour and surrounds!

Each office independently owned and operated.



**CONTACT AGENT**

**83 Edington Drive, Cooroibah**  
6 Bed 3 Bath 2 Car | 5076m2  
Nathan Beasley 0427 612 550



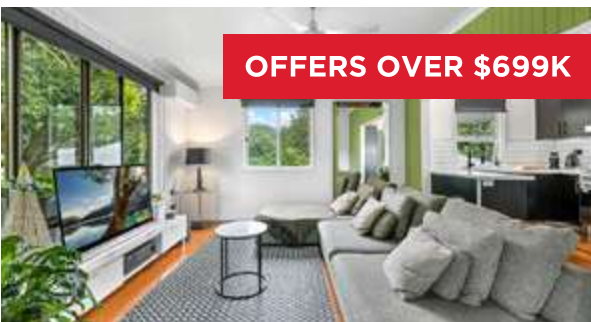
**OFFERS OVER \$689K**

**1 Killarney Crescent, Nambour**  
3 Bed 2 Bath 2 Car | 700m2  
Tristan Brown 0403 665 643  
John Tobin 0478 664 546



**OFFERS OVER \$799K**

**164-166 Petrie Creek Road, Rosemount**  
4 Bed 1 Bath 3 Car | 4000m2  
Steve G Pery 0448 884 093  
Nicky Coetsee 0401 358 484



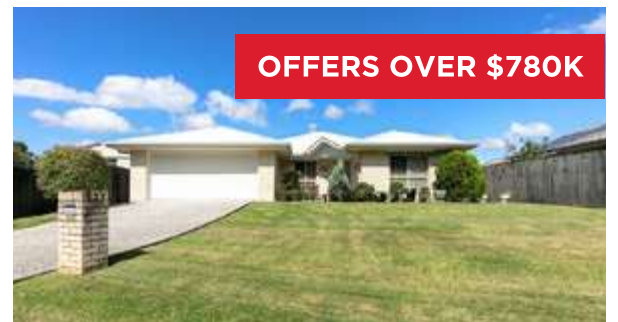
**OFFERS OVER \$699K**

**10 Hocking Street, Nambour**  
3 Bed 1 Bath 1 Car | 610m2  
Richard Krausz 0422 997 810  
Simon Schroder 0435 902 740



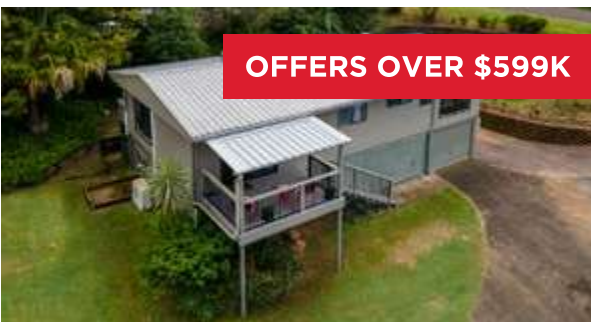
**OFFERS OVER \$710K**

**11 Robertson Drive, Burnside**  
3 Bed 2 Bath 2 Car | 620m2  
Megan Manly 0421 040 807  
Richard Krausz 0422 997 810



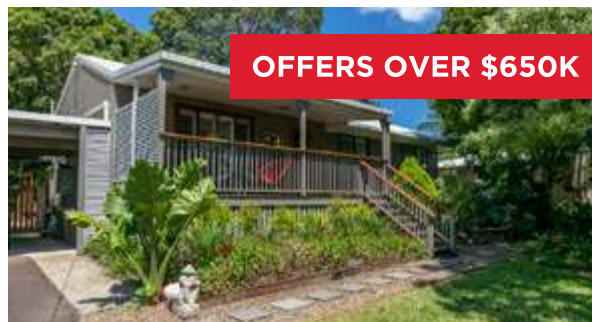
**OFFERS OVER \$780K**

**30 Rod Smith Drive, Coes Creek**  
4 Bed 2 Bath 2 Car | 654m2  
Richard Krausz 0422 997 810  
Megan Manly 0421 040 807



**OFFERS OVER \$599K**

**9 Dandenong Street, Burnside**  
3 Bed 1 Bath 1 Car | 625m2  
John Tobin 0478 664 546  
Frederic Tober 0402 001 179



**OFFERS OVER \$650K**

**21 Nimbus Drive, Flaxton**  
3 Bed 1 Bath 1 Car | 809m2  
Steve G Pery 0448 884 093  
Jai Barber 0492 855 196



**OFFERS OVER \$639K**

**13 Mayfield Street, Nambour**  
3 Bed 2 Bath 2 Car | 1042m2  
John Tobin 0478 664 546  
Frederic Tober 0402 001 179



**SOLD \$800,000**

**13 McLean Place, Nambour**  
5 Bed 2 Bath 2 Car | 1750m2  
Richard Krausz 0422 997 810  
Megan Manly 0421 040 807



**SOLD \$816,500**

**9 Bega Street, Burnside**  
3 Bed 2 Bath 1 Car | 660m2  
Richard Krausz 0422 997 810  
Megan Manly 0421 040 807



**SOLD \$1,100,000**

**40 Elouera Drive, Ninderry**  
3 Bed 2 Bath 4 Car | 1.11ha  
Jason Stock 0499 562 675

**RE/MAX Property Sales & Rentals**

Scan the QR code to find out what the Nambour community has to say about RE/MAX



# Look Local Trades & Professional Services

## Landscaping Services

### MANSON LANDSCAPE DESIGN & CONSTRUCTION

- Need help with a landscape plan for your property?
- Need help with a planting plan for your garden?
- New business offers discounted rates for garden design.
- Free quotes for landscape construction.

Call or email James for a free site visit and quote

Phone 0425 222 967  
james@mansonlandscape.design  
mansonlandscape.design

### WOODCHIP / FOREST MULCH

\$22 per cubic metre + GST  
(8 cubic metres minimum delivery)

**54 459921 or 0412 586 131**

We also provide complete tree services including pruning, removals & consultancy



## Professional Services

### innov8 ACCOUNTING & ADVISORY

- Accounting
- Business Advisory Services
- Tax Return Preparation
- Company, Trust, Partnership, Individual
- Self-managed Super Funds



5442 1234

info@innovateaa.com.au

4 Pinegrove Rd  
Woombye

www.innovateaa.com.au

## Auto Services

### AUTOELECTRICS QLD & Mechanical

- Air Conditioning
- Mechanical Repairs
- Auto Electrics
- Log Book Servicing

227 Nambour Connection Rd, Woombye

autoelectricssql.com.au

5442 2278

## Home

Servicing The Sunshine Coast For Over 30 Years

### INDEPENDENT BLINDS & AWNINGS

0411 872 060

Ziptrak & Zipscreen • Blinds & Awnings  
Clear PVC Blinds • Plantation Shutters  
Security Doors & Screens

Call us today for a free measure and quote!

www.independentblindsandawnings.com.au

QBCC No. 1096933

## Cleaning/Pest Control

### Sutton's CLEANING SERVICE

- SEPTIC SYSTEM *Locally Owned*
- TREATMENT PLANTS *& Operated Since 1980*
- GREASE TRAPS
- HYDRO EXCAVATION
- LIQUID WASTE
- COMMERCIAL & DOMESTIC

PH 5447 6477

www.suttonscleaning.com.au

### CONCRETING & LANDSCAPING ALL AREAS

- Footpaths • Driveways • Slabs
- Stencil • Stamped
- Exposed Aggregate • Plain • Bobcat
- Excavator & Truck
- Quality work at affordable rates
- Free Quotes & Free Advice Anytime
- Credit Cards

Ph Guy 0416 202 044  
www.concretecontrol.com.au

QBCC Lic no. 1129605

## Electrician

### ACW Electrical Pty Ltd

Small Job Specialist

Quality Workmanship on Domestic Installations & Repairs

40 Years Experience

M: 04 27 170235

## Gas Services

### GAS SERVICES QLD

NEED A NEW GAS CONNECTION

- Domestic • Commercial • Industrial
- New Installations • Repair Work
- Gas Emergencies

Mention this ad for 20% off the service & repair call out fee. Valid until Feb 2022.

CALL DREW 0404 657 047  
info@gasservicesqld.com.au

QBCC: 15247354

www.gasservicesqld.com.au

## Roofing

### RE-GUTTER?

DOES YOUR HOUSE NEED GUTTERS REPLACED?

LOW SET AND HIGH SET  
FREE QUOTES

PHONE 0417 721 630

JOBS UNDER \$3300

### LOCALLY GROWN TURF



- Low Maintenance
- Hard Wearing
- Shade Hardy
- Drought & Salt Resistant
- Suits all Budgets

- Wintergreen Couch
- Native Zoysia Nara
- Soft Leaf Buffalo Sapphire

• Pickup or Delivered • Preparation & Installation

P 07 5445 9251 M 0488 409 502

447 Chevallum Rd, Chevallum | twistbrothersturf.com.au |

- TREES & STUMPS REMOVED
- HOUSE & SHED SITES
- UNDERGROWTH & LANTANA CLEARED
- FARM ROADS
- HORSE ARENAS
- AND MUCH MORE!
- STEEP SLOPES OK



JOHN : 0455 916 231

## Auto Services

### CARAVANS WE BUY, SELL AND CONSIGN

P: 0408 758 688

### RANGE CARPET CARE Citrus or Hypoallergenic Detergents Available

Nambour > Hinterland Coast

- Same owner operator - SINCE 1987
- Environmentally safe & clean solution
- Commercial & residential
- Help reduce levels of dust mites

**WARNING** Dirty carpets are a health hazard  
**BROLLY** Fabric Protection  
Ph 5445 7611

WE ARE BACK!  
Noosa Eumundi Auto Wreckers

17 Whalley Creek Close, Burnside

Call Ivan 5442 8866

STILL WANTED:  
F Trucks and other cars  
Ring for parts requirements  
Open Mon to Fri 9am-1pm



Advertise in Look Local Trades & Services & reach 20,000 local readers a fortnight.  
0400 069 711



**Plumber**

**WOOMBYE PLUMBING**  
30 Years Experience  
**RURAL PLUMBING SPECIALIST**

- RAINWATER TANKS & INSTALLATION
- DRAINAGE
- MAINTENANCE
- EXCAVATOR HIRE

**ADAM KITHER**  
0418 712 268  
adam@kitherplumbing.com

24 Menary Rd, Woombye QLD 4559

**Water Services**

**HW WS SEPTIC PUMP OUTS**

Hinterland Waste Water Services

**Peter**  
0428 723 082  
hwws@bigpond.com

**HPS**

Hinterland Pump Services

Glasshouse to Gympie

Murray

0416 256 536

**GD WATER BORES**

OBLIGATION FREE SITE INSPECTIONS FOR ALL SUNSHINE COAST RESIDENTS

Call **1300 0 DRILL**  
E water@geodrillaustralia.com.au  
www.gdwaterbores.com.au

Look Local **Classifieds**

**Health & Wellbeing**

**HATHA YOGA/PILATES RELAXATION**  
Woombye Hall: Sat 9am & Wed 9.30am.  
Beginners & Seniors welcome. Cost \$10. Christine: 5441 6285 (Cert. in Pilates matwork; Dip. IYTA: Yoga Instructor; USC Sport & Exercise minor: Ex. Prescrip. for Health & Rehab.)

**Horrified by rail overpass possibility**

IT was with shock and horror that I learnt from your paper of this possible rail overpass coming into our precious town of Woombye with its resultant traffic problems.

The Council is doing a great job in Woombye, creating a "village" feel with proposed street plantings, structures and traffic calming plans. I know that housing and traffic has grown around Woombye but can we please advocate for a bypass around Woombye - not through it?

I am certainly going to have my say on the Council's "Have Your Say" page. My family came to Diddillibah in 1953 so Woombye has been our town since that time.

- Lynette Walker, Diddillibah

**Palmwoods traffic & parking concerns**

REGARDING the rail bridge: The raised escape path (footpath as it is also referred to) under the rail bridge. The path got badly chewed up by 4x4 vehicles during the recent floods with the result that it has become impassable for all but the biggest 4x4 and similar vehicles.

I would suggest that it be repaired with the

**Letters to the Editor**

Do you have an opinion to share? A range of viewpoints leads to better debate and better outcomes. Submit your Letter to the Editor with your name and suburb to: editor@sunshinevalleygazette.com.au. Please understand there is a strict 300-words limit.

idea in mind to put a long, shallow dip in the path/road at the Kolora/Woombye side of the bridge. This would allow more of any future flooding to escape (it already flows across that section anyway and down towards a stream) and ensure that vehicles that cross there only have to go through a couple of LINEAR metres of water about 30cms deep at most. The main underpasses would also not fill up quite so much.

Regarding Palmwoods parking: The weekly mobile library parks under the trees near the start of Main Street (left of and below the hall). In that area, if it were sealed, a fair number of ANGLED parking spaces could be created. The area is already informally used in that way but some people park a bit selfishly and it can

become rather higgledy-piggledy. Formalising (for want of a better word) that parking area would create about a dozen reasonably shaded parking spots. The middle of the area could still be reserved for the mobile library on Tuesdays. Yesterday I went to park there and in an area where it should be possible to neatly angle park about nine vehicles (maybe more?) only five were parked and there was no room for more. What appeared to be the first vehicle had parked almost parallel to the road and about two metres from the footpath by the pedestrian crossing. The next car was at a slight angle but also about two metres from the first one and so it went on.

Regarding Little Main Street: Just an after-the-fact observation for Little Main St ...

It is a pity that the parking there was not given more thought. Firstly to place the parking on the side opposite the shops would have meant the quaint view of the shops would not be obstructed by modern vehicles right up against them.

Secondly - the board-walk area, had it been made a bit narrower, could perhaps have accommodated angled parking. A pity, really, that more thought/consultation did not take place at the time.

The submit your comments part of the SCC surveys don't really lend themselves to comments or suggestions such as these.

- Erik Eilertsen, Palmwoods

**Nature Watch**



**< Welcome Zendaya** A cheeky baby baboon is settling into a fun family life at Woombye's Wildlife HQ. Zookeepers have kept a close eye on 14-week-old Zendaya, which means "be thankful", and she has already developed a bold personality. Zendaya was the first baboon born at Wildlife HQ in more than five years and she has joined a troop, including first-time mum Abeba, dad Tehuti and aunts Zola and Layla.



**Python & Frogmouth blend in**

Meanwhile, the resident Mary Cairncross Scenic Reserve carpet python was sunning itself last week. At the same time a glorious Twany frogmouth blended into the trees. Their plumage is mottled grey, white and black. The feather patterns help them mimic dead tree branches. Their feathers are soft, like those of owls, allowing for stealthy, silent flight. They have stocky heads with big yellow eyes. • Send your Nature Watch pic to editor@sunshinevalleygazette.com.au.



**Butterfly and moth on Pentis** Butterfly numbers have been much higher than usual this season, according to Nature Watch regular Don McGlusky of Diddillibah. "Caterpillars have stripped the White Cedar tree and many garden plants," he said. "Also the Apple Blossom tree has taken a beating. It is very hard to photograph the butterflies as they are very active. While this shot isn't great I thought it was a keeper due to the presence of the moth as well. A bit unusual."

**Maleny Golf Club results**

• **Sunday 13th March, 2022:** The Maleny Golf Club held a Mixed Stroke Gross for Nett golf competition for the Juniors of our Club and visitors. First place went to Ionna Muir with a score of 72, runner-up went to Jaxon Smith with 75, third place went to Cooper Fi with a score of 77.

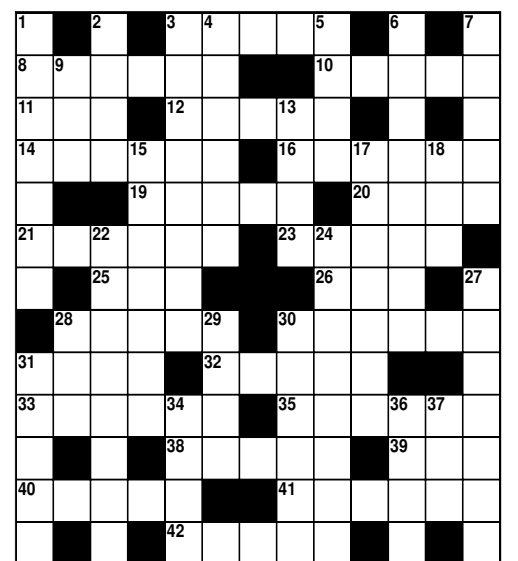
• **Wednesday 16th March, 2022:** There was a Mixed Irish 4BBB Stableford competition played with first place going to Lee, Warren & McDonald, Colin & Fairley with a score of 86, runners-up were Smith, Ron & Dickson, Ian & Newsham with a score of 82 and third place going to Nieper, Roly & Nieper, Kerry & Lawrence with a score of 80 on a count-back from Waldron, Rod & Seymour Jamie also with 80.

• **Saturday 19th March, 2022:** A Mixed Single Stableford Competition was played with first place going to Heath Gray with a score of 39 on a count-back from Kevin Mattushek, also with 39 points, runner-up went to Eric Hecht with 38 points and third place went to Joel Mohamed with a score of 37 on count-backs of 37 points going to Stephen Burke and Ralph Ding, both also with 37 points.

**Crossword**

See solution next page

- ACROSS**
- 3 Street urchin
  - 8 Like better
  - 10 Foreign
  - 11 Fastener
  - 12 Ruler of Hyderabad
  - 14 Develops
  - 16 Period of time
  - 19 Sports enclosure
  - 20 In the midst of
  - 21 Chinese boat
  - 23 Shifted
  - 25 Craft
  - 26 Female swan
  - 28 Zodiac sign
  - 30 Vessels' mooring spaces
  - 31 Poem of heroism
  - 32 Fruit of the oak
  - 33 Superficial show
  - 35 Securing ring
  - 38 Fastener
  - 39 High mountain
  - 40 Freight
  - 41 Spring back
  - 42 Remains
- DOWN**
- 1 Pacify
  - 2 Bill of fare
  - 3 Produce
  - 4 Got up
  - 5 Nominate
  - 6 Connecting band of tissue
  - 7 Concluded
  - 9 Disencumber
  - 13 First man
  - 15 Whim
  - 17 Large caves
  - 18 Accomplished
  - 22 Seamen
  - 24 Performs surgery
  - 27 Taken unjustly
  - 28 Monkey
  - 29 Hindu garment
  - 30 Shady
  - 31 Expel by legal process
  - 34 Love god
  - 36 Frozen shower
  - 37 Old cloth measure



### Ride2School is on again 25 March

**David Law**  
Division 10 Councillor  
david.law@sunshinecoast.qld.gov.au



THE annual nation-wide tradition is a great opportunity for you and your children to get outside and incorporate healthy and sustainable travel options into your everyday lives.

Students who register to pedal, scooter or skate to school on Friday, March 25 will be in the running to win one of four \$500 bike shop vouchers on offer. Visit Council's website to register.

### Pathway Construction - Carter Road, Nambour

Works have begun on the installation of a new 1.8m wide pathway along the south side of Carter Road, from Blaxland Road to the bus stop at 69 Carter Road in Nambour.

I am very happy to be connecting another gap in the pathway network. The new pathway will provide improved connectivity and pedestrian safety for public transport users and the community. It is important for residents to be able to both safely and easily access bus stops.

Construction is scheduled to be complete by the end of March (weather permitting).

### Entries open for Student Art Prize

Does your child like to draw? Unleash their creativity and enter their artwork into the competition for native Australian plant and animal art and be in with the chance to win a share of \$3000. The WildHeART Student Art prize is a children's art exhibition with three age categories. Why not put this on your activity list these school holidays - Entries close 17 July 2022. Head to Council's website for competition details.

### Retaining Wall Construction, Bade Street

The mass rock retaining wall (70m section) along Bade Street, located to the east of the existing crib wall will be removed and replaced. These important renewal works will create a durable and long-lasting structural solution.

Thank you for your patience during the work period. The project will be completed as soon as practical and subject to weather conditions.

Please contact me at email: david.law@sunshinecoast.qld.gov.au and follow my Facebook page for regular updates: @DavidLawDivision10.

### \$1.8 billion SEQ City Deal

**Ted O'Brien**  
Federal Member for Fairfax  
ted.obrien.mp@aph.gov.au



All three tiers of government have come together to sign the SEQ City Deal - a joint commitment to deliver \$1.8 billion worth of infrastructure that will transform the region. I was honoured to attend the historic signing event after years of working closely with Prime Minister Scott Morrison and Infrastructure Minister Paul Fletcher on the deal.

The City Deal will play an important role in delivering transformative projects for the Sunshine Coast and will provide access to two newly created funding streams worth \$435.8 million. An additional \$35.3 million will also be invested into the Sunshine Coast's Blue Heart environmental project thanks to the newly minted Deal.

### The Shack opens men's shelter

I was thrilled to join Pastor Dale Dowler recently to officially open the Sunshine Coast's only Men's homeless shelter located in Nambour. The project was supported by \$500,000 in federal funding which I delivered as part of a 2019 election commitment. Seeing this project built is vitally important to men who need help, and it's a prime example of what can be achieved by local leadership with government support.

Congratulations to Pastor Dale Dowler for his vision and leadership. The project, named 'Gen One', was Dale's idea and he made it a reality. If you don't know Dale from the The Shack Community Centre in Nambour - he is an extraordinary man and a wonderful asset to our community.

### Record Low Unemployment

While there is still much work to do, the latest economic figures demonstrate Australia's strong economic recovery from COVID-19. Unemployment for women is now at the lowest level since 1974 at 3.8% and overall unemployment is just 4%. Despite the economic hit from COVID-19, more people are in jobs today than before the pandemic. In short, this shows our economic plan is working. Rest assured, I am very aware of the challenges facing many local people and businesses. We have more to do.

### Bridge Batter is completed

**Winston Johnston**  
Division 5 Councillor  
Division5@sunshinecoast.qld.gov.au



I am happy to advise that the Bridge Batter Protection works located on Old Palmwoods Road is now complete. The project involved upgrading the bridge batter stabilisation by installing new rock gabions (cages), rip-rap rock and weepholes to existing shotcrete that remained in good condition. The works held up really well during the heavy rain and increased water volume in the creek which is a testament to the design and installation. Great work to all involved.

### Help council create a new planning scheme

I am committed to ensuring our country towns and rural regions are the best they can be. By working together as a Division 5 community, we will ensure our rich in history, contemporary and charismatic towns remain viable and alive with activity. Council is preparing a new planning scheme to guide future growth and development and to help preserve the things we love about our region.

This is your chance to share your feedback on the places, environment and spaces you love and want to protect for generations to come.

To provide early input and inform the drafting process, council is seeking feedback on planning directions at both a regional and local level. You can help shape the future of our region and your local area by visiting council's website to have your say by March 31.

### Entries open for WildHeART Student Art Prize

Does your child like to draw? Unleash their creativity and enter your art into the competition for native Australian plant and animal art and be in with the chance to win a share of \$3000. The WildHeART Student Art prize is a children's art exhibition with three age categories. Entries close 17 July. Head to the Council's website for competition details.

### Keeping you connected

Please do keep an eye on my Facebook page for the latest Division 5 news and information. Visit [www.facebook.com/winstonjohnstondivision5scc](http://www.facebook.com/winstonjohnstondivision5scc)

### After the downpour, comes the cleanup

**Andrew Powell**  
State Member for Glass House  
glass.house@parliament.qld.gov.au



FEBRUARY was a dreadful, soggy month. It brought rain, flooding and damage. And then March blew in with hail, microbursts, wind and, yes, more rain. While the weather is still bearing the hallmarks of La Niña, the sun is making a more regular appearance. Smiles are starting to return to the faces of locals. Governments at all levels, federal, state and local, have offered grants to assist with the recovery and some of the worst-affected areas are starting to look more normal. Thank you for your kindness to each other and for lending a hand in your communities.

It made Clean Up Australia Day much more real. I joined the Maleny Blackall Range Leo Club for a clean-up activity at Mountain View Road, Maleny (in the sun!!). Thanks to everyone who came to assist!



### Cleanup at Warriors

I was also pleased to host Leader of the LNP Opposition, David Crisafulli, for a special clean up day at the Palmwoods Warriors Football Club. Like many sporting clubs, the Warriors watched their fields go under four times in two weeks. Goal posts ended up against fencelines, fencelines pushed over and there was debris everywhere. The community spirit on show was impressive though. Full credit to representatives from the Sunshine Coast Churches Soccer Association and from other less affected clubs who came and joined in the clean-up. Made a large job manageable. And reflected our Sunny Coast spirit!

### Have Your Say: SEQ Flood response

**Rob Skelton**  
State Member for Nicklin  
nicklin@parliament.qld.gov.au



THE Premier has announced there will be an independent review of Queensland's response to the recent flood event which severely impacted the south-east of the state.

The independent review will be undertaken by the Inspector-General of Emergency Management. As part of the review, the Inspector-General will be inviting submissions from the public and will host some public forums.

The Terms of Reference and further details about how to make a submission are available on the Inspector-General's website here: [www.bit.ly/SEQFloodReview](http://www.bit.ly/SEQFloodReview)

### Further Housing support for flood affected Queenslanders

Flood waters have subsided across the south-east but in the aftermath of such a significant disaster we know there are Queenslanders who need help find to safe and stable housing.

To assist people in the community eligibility for products such as Bond Loans, Bond Loan Plus and Rental Grants for Queensland residents within the activated disaster areas, who are displaced from their property due to the weather events have been temporarily expanded.

For housing help, call 13 QGOV (13 74 68) or visit your nearest Housing Service Centre.

If you are experiencing or at risk of homelessness, contact the Homeless Hotline for free on 1800 474 753 (24/7).

### \$3000 Electric Vehicle Subsidy

We're making electric vehicles more affordable and accessible for more Queenslanders. From 1 July, the Queensland Government will provide a \$3,000 subsidy for anyone buying an electric vehicle to the value of \$58,000 - that means subsidies will apply to six models currently available in Queensland.

We're also committing \$10 million to build even more public charging stations, with new stations jointly-funded with the local government and private sector.

This will help the many Queenslanders currently waiting for electric vehicles to become more accessible and affordable so they can make the switch, reducing our emissions and

### After the rain, the calls keep coming



from **Donna Brennan** Wildlife Volunteers  
WILVOS 5441 6200 [www.wilvos.org.au](http://www.wilvos.org.au)

WILDLIFE worries don't just end when extreme weather conditions occur. Our WILVOS Hotline has had an increase in calls even after the deluges of rain have passed.

Animals that live in burrows may be recovering as their homes become inhabitable. Some bird species may be suffering from nutritional deficiencies due to lack of food. With continual rain our nectar eaters aren't going to find their usual flowers. Grain may become wet and toxic to any animals eating it.

As the sun comes out we think all is well. Then another day of heavy rain arrives and our wildlife doesn't have their normal strength to cope with all that foraging and feeding.

Birds especially lose weight very quickly. Often waterlogged, they can't take off into flight so quickly and efficiently. This means many become victims of domestic animal attack or they are hit by cars on the road.

This week an adult noisy pitta came into care, a reminder of what spectacular birds we have in Australia. Building their nests on the forest floor does not help their survival.

It is a time when we need to be especially vigilant in keeping our pets contained. Every house should be built with a cat aviary attached! It is always so sad to see these preventable deaths and horrific injuries happening to our native animals.

On the brighter side, it is a great time to plant all those native flowering, fruiting and seeding shrubs in the garden. Our native plants grow so quickly and feeding all our native wildlife. Check out your local native plant nurseries!

### It's underfunded. Horribly delayed. Let's re-announce it!

by **Jeffrey Addison**  
Sunshine Coast Commuter Advocate



THERE was Déjà vu last Friday at 10am in the Queensland Parliament.

Despite numerous integrity issues, across multiple departments and Ministers, plaguing the state government, it was "look over here" - in regard to their latest re-run announcement of our massively delayed and underfunded rail project.

The Premier trumpeted the praises of our B2N rail that was now starting (again):

"Today I am proud to announce another major milestone for one of Queensland's most important rail projects. I can confirm that work has begun on the \$550.8 million Beerburum-to-Nambour upgrade at Landsborough. This project will: duplicate tracks on the north coast line, ease congestion on the Bruce Highway, increase freight capacity, and improve services between Brisbane and the Sunshine Coast.

"This will change the lives of thousands of people right throughout South-East Queensland, improving services for commuters from Caloundra to Landsborough right through to Nambour and Palmwoods. This major upgrade will ensure that we are ready to welcome thousands of visitors to the south-east in time for the 2032 Olympic Games.

"Beerburum to Nambour is also vital when it comes to rebuilding our economy and creating opportunities for local businesses. I am advised that Hall Contracting, a local company, will complete early works. Ten workers will start the job this week. This number will grow over the next three months as we move towards heavy construction."

The Transport Minister made a similar start announcement on 10 August 2021, titled 'Local company secures Beerburum to Nambour Rail Upgrade contract.' Works to start in early 2022.

What triggered this 'work has begun' bravado? "The Department of Transport and Main Roads would like to advise that water-main relocation work is scheduled in Landsborough as part of the Beerburum to Nambour Rail Upgrade (B2N) project in early March 2022."

Yes folks, they are shifting a water-pipe in Landsborough.

It's huge news for commuters! And in bigger news for this \$550.8m project - they announced ten, yes TEN workers are going to be starting on it.

The Premier continued: "We are delivering for the Sunshine Coast because we have two outstanding members on the Sunshine Coast who work hard."

This in reference to newbie MPs: Jason Hunt (Caloundra) and Robert Skelton (Nicklin).

How anyone can claim that rail works that stop 26.4km shy of an MP's electorate is the result of their hard work is a mystery. It would seem to be more of a "punishment" for any hard work.

\$160.8m funding for B2N was announced by Mark Bailey and Jackie Trad almost four years ago (Saturday 9 June, 2018), so that makes the "delivering" pronunciation a lie.

But for a government that doesn't appear to understand what integrity is, it's no surprise.

The Premier claimed the project will increase freight capacity.

It won't.

There are no freight improvements until Stage 2 (unfunded) works proceed.

TMR website states: "Full freight benefits will be realised in future stages".

Whenever the Government talks about B2N they deliberately mislead you, the public, when they know that what they're saying is not funded.

Welcome to integrity, Queensland Government style.

### Crossword Solution

A	M	G	A	M	I	N	L	E	
P	R	E	F	E	R		A	L	I
P	I	N	N	I	Z	A	M	G	D
E	D	U	C	E	S		D	E	C
A		A	R	E	N	A		A	M
S	A	M	P	A	N		M	O	V
E	A	R	T				P	E	N
	A	R	I	E	S		B	E	R
E	P	I	C		A	C	O	R	N
V	E	N	E	E	R		W	A	S
I	E	R	I	V	E	T	A	L	P
C	A	R	G	O		R	E	S	I
T	S		S	T	A	Y	S	L	D



# Palmwoods Hotel est. 1912

## EXPERIENCE THE LEGEND



28-34 MAIN STREET PALMWOODS | BOOKINGS ESSENTIAL | 1300 PALMWOODS | WWW.PALMWOODSHOTEL.COM.AU |

**FOOTY WINS ARE BACK!**

GRAB YOUR BONUS STUBBY COOLER!

**WIN THE ULTIMATE ENTERTAINMENT PACKAGE EACH WEEK**

PLUS KAYO SUBSCRIPTIONS AND \$50 VISA EGIFT CARDS TO BE WON

**MAJOR PRIZE PACKAGE**

- ★ Samsung 75" Neo QLED 8K Smart TV
- ★ Samsung Q Series Soundbar
- ★ Husky Retro Bar Fridge 110L
- ★ Family Weber Q with cart

SPEND \$60 OR MORE, COLLECT YOUR BONUS STUBBY COOLER AND ENTER ONLINE AT [BOTTLEMART.COM.AU](http://BOTTLEMART.COM.AU)

TERMS & CONDITIONS APPLY. SEE WEBSITE FOR DETAILS.

<p><b>XXXX GOLD</b> 24 X 375ML BOTTLES OR CANS</p> <p><b>\$43.99 EACH</b></p>	<p><b>XXXX DRY</b> 24 X 330ML BOTTLES</p> <p><b>\$44.99 EACH</b></p>	<p><b>ASAHI SUPER DRY</b> 24 X 330ML BOTTLES</p> <p><b>\$51.99 EACH</b></p>	<p><b>GREAT NORTHERN SUPER CRISP</b> 30 X 375ML CANS</p> <p><b>\$56.99 EACH</b></p>
<p><b>VODKA CRUISER MIXED</b> 10 X 275ML BOTTLES</p> <p><b>\$34.99 EACH</b></p>	<p><b>JIM BEAM WHITE BOURBON, CANADIAN CLUB WHISKY OR BALLANTINE'S SCOTCH WHISKY</b> 700ML</p> <p><b>\$39.99 EACH</b></p>	<p><b>SMIRNOFF RED VODKA, GORDON'S GIN, CAPTAIN MORGAN SPICED GOLD, BUNDEBERG UP RUM, JOHNNIE WALKER RED LABEL SCOTCH OR GORDON'S GIN</b> 1 LITRE</p> <p><b>\$52.99 EACH</b> EQUATES TO \$37.09 PER 700ML</p>	<p><b>DE BORTOLI ROSÉ ROSÉ</b> 750ML</p> <p><b>\$12.99 EACH</b> SAVE \$4</p>
<p><b>JACOB'S CREEK SPARKLING NV WINES</b> 750ML</p> <p><b>ANY 3 FOR \$25</b> SAVE \$8</p>	<p><b>VASSE FELIX CLASSIC OR SQUEALING PIG WINES</b> (EXCL. PINOT NOIR) 750ML</p> <p><b>ANY 2 FOR \$30</b> SAVE \$10</p>	<p><b>DE BORTOLI WINDY PEAK WINES, MCGUIGAN SINGLE BATCH WINES, WOLF BLASS YELLOW LABEL WINES OR YALUMBA Y SERIES WINES</b> 750ML</p> <p><b>ANY 6 FOR \$60</b></p>	

BEERWAH CELLARS – BEERWAH SHOP 11, BEERWAH MARKETPLACE PEACHESTER RD TEL 5494 0477  
 BEERWAH DRIVE THRU – BEERWAH MAWHINNEY STREET TEL 5494 0555  
 GLASS HOUSE CELLARS – GLASS HOUSE MOUNTAIN SHOP 5, 9 BRUCE PARADE TEL 5493 0188  
 MOOLOOLAH CELLARS – MOOLOOLAH SHOP 3, 2 JONES STREET TEL 5494 7320  
 PALMWOODS CELLARS – PALMWOODS SHOP 5, 18-20 MARGARET STREET TEL 5445 9266  
 PALMWOODS DRIVE THRU – PALMWOODS 28 MAIN STREET TEL 5445 9003

**START AT**

**Bottlemart**

[BOTTLEMART.COM.AU](http://BOTTLEMART.COM.AU)

Choose to Drink Wise. All specials available from Wednesday 16th March until Tuesday 29th March 2022. Images are for illustrative purposes only. Specials available only in the state of Queensland. Prices may vary in country and far North Queensland. Different pack sizes and variants may not be available in all stores. Bottlemart supports the responsible service of alcohol.

FOR SALE	NAMBOUR	FOR SALE	NAMBOUR	FOR SALE	NAMBOUR	FOR SALE	NAMBOUR	FOR SALE	PALMWOODS
									
39 COURT ROAD	696 BLI BLI ROAD	3/29 WILLIAM STREET	35 NETHERTON STREET	10 TARONGA STREET					
2  1  4  1012m <sup>2</sup>	10  9  1280m <sup>2</sup>	3  1  2  103m <sup>2</sup>	4  1  3  1012m <sup>2</sup>	3  1  2  757m <sup>2</sup>					
Andy Sharma: 0410 989 177	Peter Wrigley: 0407 374 349	Andy Sharma: 0410 989 177	Andy Sharma: 0410 989 177	Andy Sharma: 0410 989 177					

# Everyone wants to work with us! Who's next?

RE/MAX Property Sales

**1**  
NUMBER

**LARGEST GLOBAL ASSOCIATE NET GAIN**  
- SMALL MARKET -  
RE/MAX GLOBAL AWARDS | 2021

We have just won #1 GLOBAL Largest Net Gain in Sales Associates for 2021!

Want to join us?  
Contact Tristan Brown on 0403 665 643 today.



**RE/MAX Property Sales & Rentals**

Scan the QR code to connect with our team.

www.remaxpropertysales.com.au | 50 Lowe Street, Nambour | 5470 7000

*Cub Cadet*

**AMAZING CUB CADET RIDE ON'S**

**4 WHEEL STEER ZERO TURN**

**FREE Local Delivery**



**3 YEAR DOMESTIC WARRANTY**

CUB CADET ULTIMA ZT1 ZERO TURN LEVER



ZT1  
**\$6,499**

NEW MODEL

- 42" CUTTING DECK
- 697CC CUB CADET ENGINE
- LED HEADLIGHTS

**6 YEAR WARRANTY ON ENGINE & UNIT**

CUB CADET RZTS46



RZTS46  
**\$8,199**  
RRP \$8,499

- 23HP KAWASAKI V-TWIN
- 46" FABRICATED DECK
- STEERING WHEEL CONTROL
- 4 WHEEL STEERING

**3 YEAR DOMESTIC WARRANTY 3 YEAR COMMERCIAL WARRANTY**

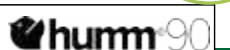
CUB CADET PROZ 972 SD



- 35HP V TWIN KAWASAKI ENGINE
- 72" CUTTING DECK
- POWER STEERING
- 16C PARKER PUMP MOTORS
- GREAT ON SLOPES/HILLS

PROZ 972 SD  
**\$30,399**  
RRP \$31,999

Take it today. 36 months Interest Free No Deposit  
Take time to pay. \*Conditions Apply



**North Coast MOWER CENTRE**

Ph: 07 5441 5455 | 36 Coronation Ave, Nambour  
www.northcoastmowercentre.com

Mon - Fri: 8am - 5pm  
Sat: 8am - 12pm