

FOR SALE 40 Maple Court, Yandina
UNBEATABLE YANDINA LOCATION - UNDER 800K
O/O \$799,000
 4 2 4 641m²



NEV KANE
 Real Estate since 1953
 nev Kane.com.au | 07 5446 7333



Jason Sims
 0404 67 67 01



Cr David Law, left, Vaughan Jones from Sunshine Pinball, renowned social media influencer Brooke Styles and Mayor Mark Jamieson are pumped for today's launch of the video package and website. Vaughan's Sunshine Pinball and Brooke feature in the video.

Nambour video makeover

Visual package and website launch. Check out iamNambour.com.au

THE best that Nambour has to offer will be showcased in a locally-developed visual package and launched today (Wednesday, March 1).

All will be revealed at the "I Am Nambour" Website & Video Series launch on the big screen at Majestic Cinemas at 9am.

The "major digital makeover" includes a video package by local firm Red Boss Productions as well as the revitalisation and upgrade of the existing "I Am Nambour" website.

Organiser and local businesswoman Rhonda Billett said the idea was to create a showcase of the small businesses and local industry offerings that made Nambour a great place to "invest, live, work and play".

"We will unveil the new direction the Nam-

bour business community are taking for Nambour, the Gateway to the Sunshine Coast Hinterland," said Ms Billett.

Council and Visit Sunshine Coast have financially contributed to the roll out, with investment into a further promotion of the I Am Nambour, Explore Nambour video series and web site.

"It will allow us to amplify our Nambour branding even further, feeding the new videos and website of the Gateway to the Sunshine Coast Hinterland promotion, deep into the South East Queensland tourism market," said Ms Billett.

"I am thrilled for their investment into our region assisting the Nambour Groups objectives

and roll out."

She has been meeting regularly with key players in town under a loosely affiliated "Nambour Groups" banner. The groups include Nambour Chamber of Commerce, Reimagine Nambour, Tram Co, Nambour Retailers Group, Div 10 Cr David Law, Nambour Showgrounds, key council staff and pivotal businesses.

"The aim is to unite local groups and businesses under the same banner with a common cause," Ms Billett said.

"We want to help ensure everything we do aligns with Council's vision for Nambour with a particular focus on the Nambour CBD revitalisation."

• To page 2

INSIDE ...



Business shuts shop after 60 years Page 2



Men's Shed needs new home Page 3



Bodies found at Nambour Caravan Park Page 5



Sad passing of Big Pineapple Pioneer Page 11

WOOMBYE VETERINARY SURGERY
VET
 5442 2000
 Dr Charlotte Ashton-Heinius B.V.Sc.
 23 Blackall Street Woombye

SUNSHINE STEERING

 RTA No. AU49451
David & Tina Ledger P 5478 8020 F 5478 8850
 Power Steering • Suspension • Wheel Alignments
 Child Restraints • Roadworthy Inspections
 Tyre & Balancing • All Mechanical Service & Repairs
 Air Conditioning • All Brake Repairs
 We also sell nuts, bolts and tyres.
 4/27 Main St, Palmwoods, Qld 4555

Sunstate Gearbox & Diff Service

Specialising in:
 • Manuals • Differentials
 • Automatics • Tailshafts
 • Transferscases • Clutches
OBLIGATION FREE APPRAISAL
 5 Charles Court, Kunda Park
Ph: (07) 5476 8911
 www.sunstategearbox.com.au

Collectorama
 Giant Vintage and Antiques Fair
March 4th, 2023
7am - 2pm
NAMBOUR SHOWGROUNDS @ f
 Coronation Avenue **\$6 ea CASH**
 KIDS & PARKING FREE

BUY • RENT • SELL 

50 Lowe Street, Nambour | RE/MAX Property Sales & Rentals | outstandingagents@remax.com.au | 07 5470 7000

SUNSHINE VALLEY Gazette

Editorial
If it matters to you, it matters to us. Send your news to Cameron Outridge 0409 424 487 editor@sunshinevalleygazette.com.au

Advertising
To advertise contact Tanya Outridge 0400 069 711 tanya@sunshinevalleygazette.com.au

Designer
Katie Buckley: katiebuckley@live.com

Distribution
10,000 copies are distributed to popular pick-up points throughout the hinterland including at Palmwoods, Woombye, Nambour, Chevallum, Eudlo, Mooloolah, Hunchy, Yandina, Maleny, Montville, Flaxton, Mapleton and Forest Glen.

Gazette in Print, Email, Online & Facebook
The Gazette is Printed Fortnightly & Online Always. A pdf form of the printed paper can be found on our website. Stories are also posted on Facebook, on our blog and via email to our subscribers.

Editorial Policy
Every endeavour is made to publish submissions but we can never guarantee that any article will definitely appear. We prioritise constructive news which strengthens the community fabric. Our broad aims are to:
• Connect the Community.
• Acknowledge Achievement.
• Back Business.
We encourage respectful & constructive debate on local issues in our letters section.

Thanks to our Advertisers
The Gazette is completely funded by our advertisers who make community journalism possible. Without them, there would be no paper. Please support them and let them know you found them in the Gazette.

Sadness as longstanding business in CBD closes its doors

A Nambour business is shutting its doors after serving the town in good times and bad for 60 years.

Nambour Disposals owner Darren Woodhouse, who has been a part of the business for the last 27 years, announced the Currie Street store would be “hanging its boots up” with doors closing for good on March 15.

Darren said it was a tough decision to make, especially since he was born and raised in Nambour and his parents Dave and Jan owned the store before him. Dave Woodhouse was a builder and built the original timber rodeo yards at Nambour Showgrounds, the Badminton Centre at the Showgrounds and Nambour PCYC in Burnside.

“Look it’s just the result of a general downturn in business, cost of living pressures,” said Darren. “Interest rates are up. We’ve been here a while, business was just a little bit slow. And our costs have gone through the roof.”

Darren maintains his sense of humour and says said the situation was ironic to some extent.

“We sell survival stuff, so if anyone was going



Nambour Disposals owners Darren and Simone Woodhouse are shutting their doors but there’s a store-wide sale until March 15.

to survive, you’d think it would have been us,” he laughed.

But, more seriously, he said it was a shame to see another family business shutting down, and one that attracted people to Nambour’s main street. “We used to have a lot of big shops in the main street,” he said. “What have we got now ... gyms, coffee shops, employment agencies. There’s not that much in the main street to attract anyone.”

It didn’t help that the business lost \$8000 worth of stock from rain damage last year, nor that there had been 4 attempted break-ins in

the past year. But after having enjoyed only one week’s holiday in years he was looking forward to spending time on his property in Mary Valley.

Store-wide Sale 30% off

Nambour Disposals is having a store-wide sale until March 15. Customers can enjoy 30 percent off work wear, work boots, raincoats, army gear and camping equipment. “When we are gone we are gone,” said Darren. “Thank you to all our customers for your support throughout the years.”

Nambour Groups’ Top Three Objectives

From page 1
Ms Billett and Cr Law also launched the Nambour Parking Map and last year the Nambour Vintage and Retro Op Shop Hip Hop Map. Both are live at www.iamnambour.com.au.

► The event will be held today (Wednesday, March 1) from 9am-10.30am at Suncoast Pinball/Majestic Cinemas in Centenary Square.

Nambour Groups have met regularly since April 2022 and have identified a “top 3” out-

comes list for Nambour.

- 1. Create an online portal that provides key information to visitors to Nambour, investors, and the business community in Nambour.
- 2. Activate the town centre to increase footfall, decrease anti-social behaviour and create a meeting and entertainment hub.
- 3. Promote events to create a vibrant location that encourages investment and increases business confidence and support.

Trudi’s Greatest Shave

A Nambour woman is joining the World’s Greatest Shave for a Cure. Trudi Harper said she was going the “full baldy” for the cause. “It feels like I’ve had so many friends actually pass away with Leukaemia,” she said. “It’s become something that’s extremely close to my heart.”

The shave will take place Friday March 17 at the board walk Mooloolaba near the barbecue and playground. There will be a sausage sizzle. Gold coin donation. All money will go to World’s Greatest Shave. Information 0491 759 951.

WHITE’S



Supporting the community THAT SUPPORTS US

Every White’s IGA store is designed to provide you with the freshest, most delicious food and an extensive range of locally sourced produce and goods.

We proudly share and celebrate stories of the people who create our beautiful Locavore products. This connects you to the journey of your food and goods, grown, sourced, and made locally.

“We believe that connected communities are vibrant, diverse and self-sustainable. When we support each other, we build stronger communities, and we are committed to supporting the community that supports us.” Roz & Michael White



SPECIALS

\$1.15 PER 100G
\$11.50 kg
SAVE \$3.50

MIDDLE BACON RASHERS

Hot PRICE!
\$11 kg

AUSTRALIAN BONE IN LAMB LEG ROAST

New Season

\$2 each

AUSTRALIAN SHEPARD AVOCADO

\$10.99 kg

AUSTRALIAN WHOLE ECONOMY BEEF RUMP

\$5.90 kg

AUSTRALIAN WHITE SEEDLESS GRAPES

SCAN AND NEVER MISS A BIG DEAL SPECIAL!

On sale Wednesday 1st March until Tuesday 7th March 2023
Pictures used for illustration purposes only. Savings are off regular prices. While stocks last. We reserve the right to limit purchases to reasonable quantities. We reserve the right to correct printing errors.



Some of the Nambour Men's Shed's 70 members at the shed last week.

Help wanted: Nambour Men's Shed forced to find new home

FOR many men, the local men's shed offers somewhere to go, something to do and mates that make it all worthwhile. Since 2011, the Nambour Men's Shed has provided friendship and social connections for men in the community.

It has operated from Colless Lane in Nambour since 2015, in premises that are made available by the state government on a peppercorn rental basis.

Since July 2022, the Nambour Men's Shed has been faced with the challenge of finding a suitable new home by September 30 this year.

"In July last year, the Department of Transport and Main Roads informed our committee members that the government required the use of the land," said Men's Shed President, Col Webb.

"We were told that the land had been set aside to be used as a transport corridor for the Beerburrum to Nambour Rail Upgrade project. It has been a huge blow to our group."

A second meeting between the Men's Shed committee, TMR and the Sunshine Coast Council was held in November last year and the TMR and Sunshine Coast Council informed the Men's Shed they were unable to find other suitable premises or assist with the relocation.

The Nambour Men's Shed is open five days a week and has around 70 members for whom it provides a 'home away from home'.

"Our members are from all walks of life and our organisation provides a welcoming and friendly place for them to make important social connections and participate in projects and meaningful work that has all kinds of positive impacts on the wider community," Mr Webb said.

"For some of our members, this is the most beneficial and important part of their lives. It would be absolutely devastating to us if we had to shut down. It has been suggested to us that we merge with another Men's Shed in the area and that seems like an obvious solution, but in reality, it is not that simple," he said.

"All Men's Sheds operate under the same charter, but each one is so unique. Our mem-



President Col Webb: "We make a lot of noise, sawdust and friendships but most of all we make a difference."

bers have formed friendships and bonds over many years and it is just not as easy as joining another group."

The NMS has formed the Save Our Shed (SOS) sub committee, charged with the task of finding another home for the group.

"We have looked at a range of different options but so far nothing suitable has come up," said Mr Webb.

The NMS committee has sought assistance from State Member for Nicklin Rob Skelton and Sunshine Coast Council Division 10 Councillor David Law, but with the clock counting down, they are still no closer to finding a solution.

"The last thing we want is to have to close down but that is the reality we face if we can't find new premises soon," Mr Webb said.

"So now we are putting the call out to the community to see if there is someone who can help."

"Nambour is a tremendous town and we hope there may be someone who can assist. We would love to hear from anyone who has land or a shed available which they were prepared to gift, or offer under a perpetual lease. Donations of help in kind would also be welcome."

► If you can help, please contact the Nambour Men's Shed on 5441 2527 or at info@nambourmensshed.com.au.



The Denture Care Group

Sunshine Coast

Caloundra | Maleny | Woombye



MAKE THE MOST OF YOUR HEALTH FUND THIS YEAR
CONTACT US TO FIND OUT HOW

Book a Consult with us this month so we can help you get the most out of your benefits and have you leave smiling.



P 07 5442 1721

HINTERLAND VIEW DENTAL 6 Hill Street, Woombye

denturecaregroup@gmail.com



DO YOU VALUE YOUR TEETH?

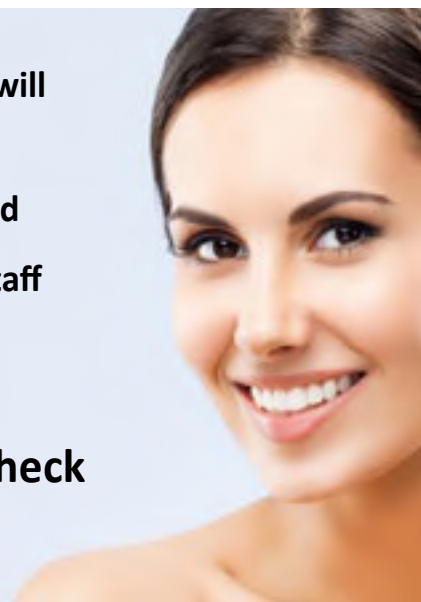
Healthy Teeth, Healthy Smile

At Hinterland View Dental we will look after you.

- Locally Owned and Operated
- Experienced and Friendly Staff
- Serene Environment

NO GAP or 50% off all Check Ups and Cleans

Complementary Orthodontic and Cosmetic Consultations



www.hinterlandviewdental.com.au

6 Hill St, Woombye

(opposite the Woombye Bowls Club)

Call 5442 2378



Hinterland View
DENTAL

ASPHALT & BASE CONSTRUCTION

CALL JOSEPH 07 5478 9834 | 0402 932 159

38 YEARS EXPERIENCE FREE QUOTES



RED BROWN & BLACK ASPHALT | MACHINE & HAND LAID HOTMIX ASPHALT

- CAR PARKS
- SALES YARDS & DISPLAY AREAS
- DRIVEWAYS
- TENNIS COURTS
- FOOTPATHS, KERBS
- GRAVEL ROAD
- CRACK SEALING
- PRIVATE ROADS
- SPEED HUMPS
- MODERN, STYLISH EDGING
- EXCAVATIONS & DRAINAGE

www.asphaltbaseconstruction.com.au



Plans for an eco-retreat at Mapleton

PLANS have been revealed for “off grid” cabins near a picturesque Sunshine Coast hinterland national park as demand for nature-based tourism grows.

A new eco-retreat with eight cabins and a yoga space have been proposed for Mapleton, subject to approval.

“The eight proposed cabins will provide accommodation for people focused on conservation, interpretation and appreciation of areas of natural environmental value,” the application said. “This includes walkers to Gheerulla Falls and other visitors at the Mapleton National Park, which is directly opposite the subject site.

“Each cabin will include an interpretative pamphlet and QR link, containing information about the local wildlife.

“This information will highlight the spectacular birdlife evident within the subject site, as well as provide awareness material for the local echidna.”

The accommodation project would also include education on native wildlife.

The plans show eight cabins with a focus on privacy and seclusion.

Now Showing at Majestic Cinemas

HERE'S what's showing now at Majestic Cinemas in Nambour.

Now Showing: Ant Man and the Wasp Quantamania; Cocaine Bear; Missing; Fisherman's Friends 2 and from March 2nd Creed 3 and Empire of Light. Our International series movie is the Danish film Margrete: Queen of the North.

► For more information on session times please visit www.majesticcinemas.com.au or phone 5441 2954.

Exhibition is ‘essentially a love letter to Nambour’

A new exhibition by Ketakii Jewson-Brown and Shaye Hardisty opens April 4 at the Old Ambo Gallery, Nambour. The exhibition features a collection of coats alongside a photographic essay that will be on display until April 29th.

In the exhibition “The Sunshine Coat Project” Ketakii Jewson-Brown and Shaye Hardisty dive deep into the layers of place, memory, belonging, fashion, and Nambour. It is essentially a love letter to Nambour through fashion, photography and video as told through the lens of this interdisciplinary artistic duo.

The two artists have collaborated with 11 other creatives to reflect the uniqueness of the town. The gallery will be abundant with layers of memory, history, belonging and place all woven together into a seamless display of creativity and community at its finest.

Ketakii Jewson-Brown is a Maleny fine art photographer. She said connecting with the collaborating artists and hearing stories from townfolk had been a heart-warming gift. Through the 18 months they have been working out of 2nd Space, a Sunshine Coast Council funded creative hub, both Ketakii and Shaye have been supported above and beyond by the Nambour creative community.

Shaye Hardisty is a seamstress and musician from Mapleton. She has taught workshops and played music across the coast, including Woodford Folk Festival's Bushtime and the Festival of Small Halls. She believes in sustainability in fashion and educating people of what this means on the ground. She has incorporated her sustainability and slow fashion ethos into the project through strict rules - only sewing with either recycled or organic materials, using scraps in clever ways and following up with suppliers to find out where things are not only manufactured, but grown.



Ketakii Jewson-Brown from Maleny and Mapleton's Shaye Hardisty have collaborated for the Sunshine Coat project.

Most of the fabric used in this project has been digitally printed on Eco Drill, an organic and recycled cotton by Next State Print, a family-owned business based in Thornbury, Victoria.

The Sunshine Coat Project opening night is April 4. A sustainable fashion speaking event is on April 28 featuring key slow fashion advocates. A closing party with local bands, drinks and a food truck takes place April 29.

► More information www.instagram.com/thesunshinecoatproject.

Big Pineapple court battle

WOOMBYE food and tourism icon the Big Pineapple has been embroiled in a bitter court fight over a disputed multimillion-dollar debt. But Big Pineapple Corp (BPC) secured a major win from Supreme Court Justice Soraya Ryan who last week set aside a \$5.5m statutory demand in her judgement. The case follows a dispute which broke out with one of its joint venture parties. The demand was filed by Brad Rankin and his Brisbane companies Rankin Investments and Rankin Super, which entered into a joint venture with Big Pineapple Corp in 2011 for the development of land around the attraction at Woombye, about 10km west of the Sunshine Coast. The Big Pineapple was built in 1971 to showcase Queensland's agriculture to tourists and the site now includes a zoo and rainforest high ropes course.

Three big events at Woombye Bowls Club

MARCH is going to be a busy one at Woombye Bowls Club with three special events at the friendly little club with well-manicured greens.

• Sunday 19 March is our first Seafood Day for the year, an Open Fours. These events are always popular with good prizemoney and lots of seafood, fish and prawns. If interested please contact the club on 5294 5245.

• Thursday 23 March is our annual Friendship Day: Mixed-Optional Fours. Come along for a day of fun, friendship, food and good cheer.

• Sunday 26 March is monthly Legends Open Pairs. Here 40 percent of the nomination fees is paid out as prize money. \$30 per team. Please phone our club to nominate on 5294 5245.

Fund-Raising Family Movie Night with a Difference

SUNSHINE Coast Riding for the Disabled (RDA) will be hosting a Movie Night on Saturday March 18. “Babe” will be shown on a “Starry Nights” outdoor screen in the horse arena. Bring your folding chair or picnic blanket. Gates open at 6pm for 7pm start. \$6 for children up to 12 and \$8 for all others over 12. Cash preferred. For more information contact 5472 7280 or admin@scrda.org.au.

PROTECT YOUR OUTDOOR AREA FOR ALL SEASONS

NEW SHOWROOM OPEN NOW



Keep out the weather and extend your living space.

Our blinds are retractable when not needed and are available in colours and styles to compliment your exterior scheme.

Available with spring, crank or motorised operation, they are hard wearing, and made to withstand our tough conditions.

Ours is a well established local family business with the experience to advise and install.

Our quality products are made to last.

Local Hinterland Company

Call us for an on-site measure and quote. Our experts will give you the right advice about the best product for your project.

Shop 5/46-50 Hospital Road, Nambour

5441 6000

www.customcurtains.com.au



CUSTOM Curtains and Shade

Blinds • Awnings • Curtains • Shutters • Security • Wallpaper

Proudly serving the Sunshine Coast for over 16 yrs



DentalExcel

WE'RE HERE FOR YOU!



NOW OPEN FOR ALL PROCEDURES

In line with Stage 1 restrictions, we look forward to welcoming you back for ALL of your dental needs.

COVID-19 Screening measures in place to ensure safety.

Dental Excel is grateful for the dedication of our staff who have been there for your emergency treatments throughout this crisis. We are still here for you and still adhering to strict hygiene precautions to keep you and us safe.

Dental Excel is proud to be a part of the MARLEY DENTAL GROUP



DentalExcel

Bulk Billing Medicare Child

Dental Benefit Scheme for Eligible 2-17 yrs

- Family Dentistry • General Dentistry • Cosmetic Enhancements • Zoom® Teeth Whitening
- Veneers • Crown and Bridge • White Fillings • Preventative Dentistry • Children's Care
- Gum Disease Maintenance • Dentures and Veterans Affairs • Dental Implants



Payment plans available - no interest ever

Open Monday to Saturday • Early and Late Appointments

Ph: 5445 0166 2-4 Margaret Street, Palmwoods www.dentalexcel.com.au



Chad Barry & Priscilla Jean with Flossy the Daschund have revamped Camphor Cottage: "Every day people are wandering into the gallery, telling me that they felt drawn to it. It's quite magical."

New gallery in Montville attracts a creative following

A new gallery offering a dreamy, eclectic space for people to immerse themselves in beauty, colour, sound and nature has recently opened in Montville and is attracting a loyal following.

After spending the past 20 years raising her children, Priscilla Jean moved to Montville to initiate a 'play space' for people of all ages and walks of life to nurture their creative spirit. The business is located at the former *Camphor Cottage* in the heart of Montville.

"This has been the most incredible, intuitive journey of creating and holding a space for people to get back to nature and allow themselves to be creative," she said.

Priscilla had previously offered art classes for women from her home and noticed how healing and sacred the classes were.

A love of creative arts led her to study art psychotherapy where her understanding of the healing power of art and creativity deepened. "We are such creative beings and I have seen and experienced firsthand how much abundance art can bring to someone," she said.

"Creativity helps us to be in tune with ourselves in a way that is just divine. Without my completely conscious awareness of it, I have been heading towards this place for ten years and finding this space in this community has been life changing," Priscilla said.

"I had decided I wanted to find a home for this concept in a supportive community and basically, over a single weekend, my partner Chad had found this gorgeous property. In the space of a month, our whole world was transformed and we have experienced an overwhelming outpouring of acceptance and support ever since. I never knew that living intuitively and helping others tap into their own creative potential could be this beautiful.

"Every day people are wandering into the gallery, telling me that they felt 'drawn' to it. It's quite magical."

Every wall of the old Queenslander is filled with Priscilla's art, and there are clothing, candles, Mismo products and books available. The verandas are home to plush, comfy armchairs and shelves brimming with books, games, sketch pads and colouring books for guests to enjoy. A piano takes pride of place on the northern verandah and it is not uncommon to find visitors playing it and other musical instruments while they enjoy a coffee or cool drink.

"Chad is a landscaper and he has worked his magic out in the garden," said Priscilla. "More than once we have been told that it is like falling into Alice's wonderland. People love to sit out under the shade of the lush trees and have their coffee."

Chad has wrapped the entire verandah in fairy lights and the gallery stands out like a little beacon on Main Street at night.

Priscilla offers a mouthwatering selection of cakes from *Homemade Bliss*, Kai coffee, *Unique Wholefoods* and *Sweet Darling* candy; "basically food to support people to thrive and feel more energetic."

There are also art supplies, candles, clothing, a second hand section, and of course, Priscilla's art. "Our dream is to eventually host artist markets out in the front garden, like *Montmatre*, in Paris," Priscilla said.

"Right now it feels like a dream that is bigger than me but after the experience of establishing the gallery here, I know it is absolutely possible."

► Priscilla's Gallery is at 190 Main Street, Montville and is open from 9am to 7pm, 7 days a week.

Police investigating discovery of two bodies at Nambour Caravan Park, Kulangoor

POLICE are investigating the discovery of two bodies at Nambour Caravan Park in Kulangoor after a resident found them on Sunday afternoon, February 26.

The men were in their 50s and the bodies were found in a cabin, reported the *Sunshine Coast Daily*. The deaths are not being treated as suspicious at this stage.

Detective Senior Sergeant Craig Mansfield told the *Herald Sun* investigators were initially not treating the deaths as suspicious but were being "cautious" with their inquiries.

"Early indications are it's potentially drug use gone awry; we're covering all bases," detective Senior Sergeant Mansfield said.

Police said one of the men lived at the caravan park while the other man was visiting his friend. Police were called to the scene about 5pm on Sunday.

An investigation continued with scientific services examining the scene. The exact cause of the deaths is subject to post mortem exami-



nations. Media was been advised that no further information was available at time of printing.

Located behind the Freedom Fuels Service Station on Nambour Connection Road, Kulangoor, the Nambour Caravan Park offers short and longer term accommodation.

A recent social project at the caravan park had been very effective in reducing crime and inappropriate behaviour and subsequent police call-outs to the venue.

 **ELITE FOOT CARE**
Podiatry • Orthotics • Footwear

Online Bookings Available

Call Elite Foot Care on **5328 3588** to book your appointment



For online bookings
www.elitefootcare.com.au

DO YOU HAVE FOOT AND LEG PAIN?

Call **5328 3588**

• Private Health Rebates • Medicare Rebates
• DVA Registered • NDIS • Workcover
• Home Care Packages • No Referral Needed

The team at Elite Foot Care can treat:

- Ingrown Nails
- Corns & Callus
- Heel Pain
- Achilles Pain
- Shin Splints
- Arthritis
- Knee & Hip Pain
- Lower Back Pain
- Kids Podiatry
- Diabetic Assessment

4/40 Wilson Avenue, Woombye
Corner of Blackall Street and Nambour Connection Road

OPEN HOURS: Mon-Fri 8:30am – 5pm www.elitefootcare.com.au



Picture Yourself in 2023

Framing, conservation and art supplies

Chat to our painting conservator Sophie and cross those jobs off your to-do list

Yandina Art & Framing

Framing | Gallery | Art supplies

7 Stevens St Yandina, Q 4561 [f](https://www.facebook.com/yandinaartframing) [i](https://www.instagram.com/yandinaartframing) admin@yandinaartframing.com.au 07 5446 8000 Trading 6 Days : Mon - Fri 9:30 - 4 | Sat 9 - 2

Nambour Men's Shed looks for new home

David Law
Division 10 Councillor
david.law@sunshinecoast.qld.gov.au



The Nambour Men's Shed needs to find a new home to be able to keep a space to support men's health and wellbeing in the Nambour region.

The Nambour Men's Shed is an excellent organisation and is a vital part of our community.

If you can help and have a suitable property that the Nambour Men's Shed could use going forward, please reach out to myself or the committee at the Nambour Men's Shed.



Quota Memorial Park Mural

Have you had a chance to view the vibrant mural at Quota Memorial Park playground? Artist Adam Lewczuk created the mural to reflect the notion of Nambour as 'a community in motion', see above.

The mural includes patterns of local flora, cogs and celebrates Nambour's First Nations connection while acknowledging the region's industrial and agricultural heritage.

Public murals, like this one, contribute to our community's identity, fosters community pride and a sense of belonging, and enhances the quality of life for our residents and visitors.

Be sure to visit the park and check out the creative work.

▶ Don't forget if you have any questions, please contact me at email: david.law@sunshinecoast.qld.gov.au and follow my Facebook page for regular updates: @DavidLawDivision10.

Meet the local barefoot skier who came third in the world

A Rosemount woman, who seven years ago hadn't even heard of barefoot waterskiing, has come third at the World Championships.

"I didn't even know the sport existed at all," said Kelly Blank. "Never heard of it. Never seen it. And I went camping with my cousins, and they were doing it and I figured I'd give it a try. And I absolutely axed myself three times in a row. Then I gave it a go six months later and I stood up! Ever since then I've been addicted. I absolutely love it."

Kelly, who is a pre-kindergarten teacher at Suncoast Christian College, reaches speeds of up to 72km/hour in three events: trick, slalom and jump.

"In slalom, I go forwards at 72 kilometers an hour because I'm crossing the wake on one foot, and then you switch feet and go back the other way. And then going backwards, I do the same thing on one foot but I go 66 kilometers an hour.

"You're literally standing on water. It's such an insane feeling. You just get so much joy and adrenaline out of it."

Kelly said competitors were judged according to the difficulty of the tricks. "So the coolest trick



Suncoast Christian College teacher Kelly Blank at the World Championships.

I can do at the moment is a toe turn. Basically I stand on one foot and put the other foot in the toe strap, and then I let go with my hands, I then turn to the back on one foot without holding the handle."

She said World Number 1 Ashleigh Stebbeings is her close friend but her goal is to one day claim the crown from the five-times world champion.

"If I keep improving and keep chasing the top two in the world, Ashleigh Stebbeings and Georgia Mathis perhaps I will beat them one day."

Kelly is sponsored by Property Lane Woombye, who also manage her property while

she ventures overseas to USA, where she trains at the World Barefoot Center.

She finishes work on Fridays and drives to her coach's house in Ipswich to train on weekends. Her worst injury was a broken femur in 2021.

The World Barefoot Water Ski Championships were held in Mulwala, New South Wales from February 14-19. Kelly came away with bronze overall, silver in tricks and a gold for team Australia overall.

Kelly said she learned barefoot skiing on the Maroochy River and anyone interested in trying should search for local clubs on facebook and make contact.

Maroochy River Country Music Club March concert

THE Maroochy River Country Music Club will hold their March Concert on Sunday 12th, commencing at 12noon.

Entry fee is \$8 and includes free coffee and tea. Venue is the A.C.M.A Country Hall of Fame on Steggalls Road, Yandina. There will be a great variety of music. Come see the wonderful memorabilia on display. Inquiries phone Darryl on 0458 671 568.

Like Greek food? Tziki Bar opens in Forest Glen

A Greek-inspired brewpub has just opened in Forest Glen. The Tziki Bar serves an authentic modern Greek menu. Choose from dips, create your own mezze platter or enjoy yiros, souvlaki skewers and Greek-influenced pizzas. Desserts include baklava and orange halva cake. Drinks include an array of wines, local tap beers from nearby Glasshouse Brewery and special Tziki brews, as well as cocktails.

Brisbane Lions Supporter's Club wants you

WE welcome all members of the Australian Football Club fraternity to join us in celebrating this wonderful game. BLSCSC Inc supports the Brisbane Lions AFLW team. Endorsed by the Brisbane Lions, our meetings are held on the first Tuesday of the month at the Caloundra Powerboat Club. The next meeting is March 7. For more information blscsc@gmail.com or call Jenny on 0408 381 721.

GOOD YEAR
AUTOCARE *Good to go*

WE HAVE TURNED 2

ASK US ABOUT OUR BIRTHDAY SPECIALS

OUR SERVICES
TYRE FITTING
Car, SUV & 4WD's
Mowers & Wheel Barrows

- Tyre Repairs
- Tyre Rotations
- Wheel Alignments

UP TO 20% OFF WHEEL & TYRE DEALS
selected stock items & more

22 Coronation Ave, Nambour
Ph: 07 5343 8344
www.allcoasttyres.com.au

Need legal advice about retirement living?

David Wise Solicitor

Specialist advice for residents and prospective residents of retirement villages, over 50's resorts, and manufactured home parks, including entry, exit, dispute resolution, Wills, Powers of Attorney and Estates.

0412 254 080 | principal@davidwisesolicitor.com.au
www.davidwisesolicitor.com.au

MEMBER Queensland Law Society.

Earthmoving • Cranes • Trucks • Hydraulics • Attachments

GR FLEET SERVICES
DIESEL MAINTENANCE & REPAIRS

We service and repair all makes of earthmoving machinery, cranes and trucks.
From Warranty Servicing to hydraulic hose repairs we have you covered.

FULLY EQUIPPED WORKSHOP + FIELD SERVICE

Authorised Dealers

169 Nicklin Road, Palmwoods • 5457 3066 • grfleet.com.au •

SPAR



WOOMBYE

Market Specials



Red Capsicums



Celery Bunch



Brown Onions 1Kg Bag
\$2.25 per kg



Cherry Tomatoes 250gm
Punnet \$8.00 per kg



Green Oak Lettuce

LOW PRICES ALL DAY EVERY DAY



Inghams Chicken Breast
Supreme

\$20⁵⁰
kg.



Silverside

\$22⁵⁰
kg.



Middle Bacon

\$12⁵⁰
kg.

SCAN TO SUBSCRIBE TO OUR LATEST WEEKLY CATALOGUE STRAIGHT TO YOUR INBOX!



Specials available Wednesday 1st March until Tuesday 7th March 2023

WOOMBYE

20 BLACKALL ST

OPEN 7 DAYS!

PH: 5413 8007



Specials available while stocks last. Limit rights reserved. We reserve the right to correct any printing errors and omissions.

Streetscape work continues Woombye

Winston Johnston
Division 5 Councillor
Division5@sunshinecoast.qld.gov.au



Works are progressing nicely for the Woombye Streetscape Upgrade. You might have noticed that since mid-February the footpath area from the Hill Street-Blackall Street intersection along Blackall Street, past the School of Arts Hall and Library and through to Frankie's Café will be under construction. Underground services will be relocated and a new concrete footpath poured. Pedestrian access will remain available to all businesses and community venues via pathways alongside the shop/building frontages. These works are expected to be carried out until mid-March.

Pet friendly pop-up

Most Sunshine Coast households have a pet in their family - many more than one!

But knowing the 'Do's and Don'ts' of how to care for your pets, at home and out in the community, can be a challenge. Our Response Service Pet Experts will be setting up a pop-up marquee or the beach buggy in Division 5 on: 7 April, Kolara Park, 3-5pm; 7 April, Mary Cairncross Park, 7-9am; 9 April, Eudlo Town Park, 3-5pm.

Head along to get information on: where you can exercise your dog, looking after your cats, keeping your pets and wildlife safe, sharing and respecting the space with other users, registration and microchipping, dog waste #bagitand-binit, barking dog concerns, our education programs.

You can pick up also some freebies for your dog, or activities for the kids.

Save the date 3 Feb - 19 March

The Latest and Greatest II exhibition is on now at Caloundra Regional Gallery, showcasing an impressive array of works acquired into the region's art collection over the last two years.

The exhibition is on show until March 19, and includes the most recent winners of the prestigious Sunshine Coast Art Prize, Kate Tucker and Marian Tubbs, as well as works by artists who are at the forefront of contemporary Australian art.

Resident concerned for safety at busy College parking areas

'I'm just waiting for a serious accident to happen'

Frustrated Burnside resident Ian Smith is urging St John's College parents to be more mindful of where they park when they pick up their kids from school.

The Hall Court resident said the school zone around Perwillowen Road was dangerous at pick-up times. "The illegal parking occurs on yellow lines leading to the junction of Perwillowen Road and Hall Court," Mr Smith said. "Parents' cars illegally parked on the yellow lines obscure vision and compromise safe access for students, parents and residents' vehicles exiting Hall Court onto Perwillowen Road during drop-off and pick-up times."

"I'm just waiting for a serious accident to happen because our next-door neighbour was nearly hit last week going out of Hall Court," Mr Smith said. "People were parked on the yellow lines, and he couldn't see oncoming traffic. He thought it was clear, and this car nearly whacked him. He had to swerve."

Mr Smith said Div 10 Cr David Law and the College had done a lot to try to educate parents. "The school puts out information in the newsletters and Cr Law has assisted," he said. "Two years ago, we managed to get Council to paint yellow lines and marked parking bays in our street because the parking was ridiculous."

"But the parents just don't take any notice. And the school hasn't got adequate drop-off and pick-up zones. Every afternoon it's a problem. So, I don't know, I'm at my wit's end. I'm hitting my head against a brick wall."

"As the year goes by the problem gets worse because students have their birthdays, get their licenses, and by the third or fourth term the whole place is chock-a-block with students' cars."

"I believe the only way to change the behaviour is with punitive action. I am acutely concerned that a serious accident may occur



Ian Smith says, despite action by St John's College and Council, parents continue to park on yellow lines, obscuring the view of oncoming traffic.

should this behaviour be allowed to continue."

Ian said that despite action by the College the problem "ongoing and worsening".

"For safety reasons, residents would like to see more proactive action on the part of the school in addressing the situation including providing more designated parking, pick-up/drop-off bays at the school."

St John's College response

St John's College Principal Martin Moloney said the school acknowledged that traffic on the Sunshine Coast had intensified as the population had increased.

"St John's College continues to strongly encourage community members to be mindful when parking around College grounds - safety of our students, parents and local community members are always at the forefront of our decisions. We will continue to work with our school community to promote safe transportation practices and urge parents and students to abide by pertinent rules and regulations when accessing our campus."

Jake flying high after landing airport job

NAMBOUR local Rachael Weissel feared her son Jake, who lives with autism and an intellectual disability, would never find meaningful employment.



Rachael Weissel and Jake.

But thanks to the willingness of an employer to give him a chance, the 18-year-old is now working 30 hours a week at Brisbane Airport.

"Swissport, who he works for, have been amazingly supportive and it's been fantastic learning how inclusive an employer they are," said Ms Weissel.

"Transport is Jake's passion, and he's working at arrivals and departures and is doing really well. He just loves his trolley service job, especially in and around the international airport."


Jake, who was supported by Carers Queensland to access the National Disability Insurance Scheme (NDIS), loves his job so much that he gets out of bed at 2am to make sure he's on time for his 5am shift. Ms Weissel is now encouraging other employers to educate themselves on the benefits of hiring people with disability, particularly people with autism.


"If you haven't been around people with disability you might be more hesitant to take them on because you're not sure how they will behave," she said. "But Jake has never been late for work, has a great work ethic and absolutely loves to work. He even got his manual driver's licence so can do his job to the best of his ability."

"His attention to detail and the fact he is a stickler for rules and regulations are just some of the reasons why Jake is such a valued employee."

Ms Weissel said the NDIS had been a "blessing" for her family because it funded a support worker to help Jake take part in social activities and attend appointments while she worked. It also funded a support coordinator to help Jake put together his resume and prepare him for the interview.

► Carers Queensland staff travel to the Nambour Community Centre monthly to help people with any NDIS-related inquiries. Contact them on 1300 999 636 or www.carersqld.com.au/ndis/





Garden Menu
Wednesday - Sunday
8:00am - 3:00pm
Breakfast
8:00am - 11:00am

High Teas
• Baby Showers
• Hens High Teas
Wednesday - Sunday
10:00am
Pre Order - Pre Pay

Flaxton Feasts and Roasts
Wednesday - Sunday
12:00pm
Pre Order - Pre Pay

CALL NOW TO BOOK
07 5445 7450
313 Flaxton Drive,
FLAXTON
flaxtongardens.com.au

SEASONAL CELEBRATION MENU

\$50 Bookings Advised | Wednesday - Sunday 11:30am - 3:00pm

COMPLIMENTARY

"Amuse Bouche" & fresh baked bread with our dips & spreads on arrival

MAINS

FRESH TEMPURA MOOLOOLABA PRAWNS
with mango & macadamia salsa *df*

MUSHROOM STACK BABA GANUSH
with grilled organic veg & quinoa *gf, vg*

CHAR GRILLED SALMON
with beetroot puree & a Cous Cous pomegranate salad *gf, df*

STICKY PORK BELLY
with green papaya, pickled ginger & herb salad *gf, df*

WARM SUMMER SALAD OF GRILLED LAMB TENDERLOIN
with sweet peas, olives, crispy potato, sundried tomato *gf, df*

DESSERT

COCONUT PANNACOTTA
with finger lime & pomegranate *gf*

RICH WHITE & DARK CHOCOLATE MOUSSE
with berries & raspberry sorbet *gf*

"SUNSHINE & SONS AFFOGATO" *gf*

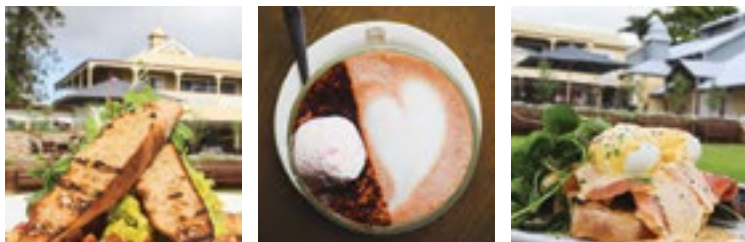
LOCAL ANTIPASTO BOARD

FLAXTON SPECIALITY "RASPBERRY SOUFFLE"
topped with vanilla bean ice cream & raspberry coulis *gf*
df option available

LOBSTER & SOUFFLE SPECIALTY

Grilled whole with white cheesy sauce served with sweet potato & a fresh salad

\$95 Must be pre ordered | includes glass of "FG" bubbles





07 5478 5802
0408 784 643
Shop 7, 3 Obi Obi Road
MAPLETON

Smile

Restore Your Confidence with Denture Art



Before



After

Our Certified Swiss Denture Concept Clinician has spent 40 years restoring smiles and confidence. By combining experience, meticulous workmanship and the highest quality materials, we have been helping our happy clients to enjoy their lives again.

We can help you with:

- Full Dentures
- Partial Dentures
- Emergency Denture Repairs, also after hours and public holidays
- Dentures on Implants
- Relines

A dental referral is not required, so please make an appointment to discuss your denture issues with our caring team and experience the Denture Art difference. Direct private medical fund claims welcome.

www.dentureart.com.au

Junior Crushers seeking more players

NAMBOUR Crushers Rugby League would like to encourage some more players in a number of teams, including girls-only teams and Under 16s and Under 17s Boys teams and under 13, 15 and 17 girls teams.

Interested players can come down to Crusher Park Tuesdays or Thursdays from 4.30pm and see the ladies in the canteen for more information.

New players must provide proof of age (eg birth certificate or passport). Come be a Crusher!

Eco Creative Festival to be held in Maleny

THE Maleny Eco Creative Festival is a new and exciting festival to be held in the Maleny Community Centre in Maple Street.

Described as "a celebration of waste to art, functional items & extraordinary ideas" the event will run from Friday to Sunday March 31 to April 2. The festival will also feature specialty vintage items that are still "beautiful, collectible or incredibly fun".

• Friday 31 March 12pm to 6pm (Shop & Sip from 3pm), Saturday 1 & Sunday 2 April 9am to 3pm.

Join in the Clean Up Palmwoods Day on March 5

THE annual Clean Up Palmwoods Day will be held on March 5. The event is organised and hosted by Martinuzzi Property Group and the Palmwoods Warriors Soccer Club. There will be a Find a Flag competition for the kids. For more information or if you are a local business who would like to donate a prize or contribute please see www.facebook.com/e/2JB3PrEjQ

Seniors forum in Maleny

LEARN how to Protect Yourself from Financial & Legal Abuse add a seniors forum to be held at Maleny RSL on Monday 20 March from 9-11.30am. RSVP by 13 March for catering purposes to Barbara on 0439 660 458 or speakup-nowstopdomesticviolence@gmail.com.



Judith Hewett, Luke and Ryan Slaven, Susie Pearce and Jamie Slaven are ready to join the Clean Up of Petrie Creek catchment.

Clean-Up Petrie Creek and help our local platypuses

Come and join Clean-Up Australia Day event

THE annual Clean Up Australia Day event is to be held at Quota Park Nambour on Sunday March 5.

Petrie Creek Catchment Care Group will target the clean-up to the areas along Petrie Creek in Nambour CBD.

"The aim is to improve the quality of the creek environment through Nambour, which has a special population of platypus living in the creek," said organiser Jamie Slaven.

"We also know the importance of removing litter in the Petrie Creek catchment before it washes downstream into the Maroochy River estuary and eventually out to sea.

"We welcome people of all ages to come and

participate on Sunday the 5th March from 8am to 12noon. Come anytime within that period and stay for as long as you like. We are based at the large BBQ shelter at Quota Park as there are many places you can go from there." Clean up bags are provided and gloves for anyone who doesn't bring their own as well as morning tea refreshments.

Jamie said it was a great way for the entire family to do their bit for a healthy creek environment through Nambour.

► The Clean up happens Sunday 5 March anytime from 8am to 12 noon at the large BBQ shelter at Quota Park Nambour. Bring sturdy shoes and gloves if you have some.



MORNINGSTAR
DIGITAL

**YOUR LOCAL
WEB DEVELOPER**

Mention this ad for a
locals discount

1300 392 542

M1 / 65 Currie St, Nambour 4560

www.morningstardigital.com.au



NAMBOUR
wesleyan METHODIST CHURCH

SUNDAY SERVICES 9AM
165 Perwillowen Rd, Burnside

KIDS CLUB
Meets Friday
Fortnightly
4pm - 6pm

**Sunday School During the Service
in School Terms**

For enquiries contact our office:

P 5476 4263

We're not just a church, we're a family

Sponsorship applications

NOW OPEN

Applications close 30 June 2023

If your community group is from the Palmwoods area and would like to apply, please speak to one of our team members for more information.

No applications will be accepted after the 30 June 2023.

Heritage | Palmwoods
Community Branch

Visit your local community branch at
Palmwoods Plaza or call 07 5294 0600

FREEZE & HEAT MEALS



HOW TO ORDER

Call 07 5445 7044 OR order online via the link below:

www.rangecare.com.au/freeze-and-heat-meals.

Minimum of 5 meals and \$5 delivery fee applies to all orders.

MAIN MEALS - \$10.00 EACH

1. Roast garlic and rosemary crusted lamb - LG

Served with roasted vegetables and gravy.

2. Crispy skinned lemon and herb roast chicken - LG

Served with roasted vegetables and gravy.

3. Beef lasagne

Lean beef bolognese layered with bechamel, pasta and cheese.

4. Braised beef and bacon casserole - LG

Slow cooked steak and bacon in a rich beef gravy, served with herb buttered potatoes and seasonal vegetables.

5. Corned beef with fresh herb white sauce - LG

Served with steamed vegetables.

6. Cottage pie - LG

Lean beef and vegetables sauteed in gravy and baked. Served with creamy mash potatoes and seasonal vegetables.

7. Mild Indian butter chicken - LG

Mildly spiced creamy tomato curry, served with basmati rice.

8. Creamy coconut Indian veggie and chickpea curry - LG DF VEG

Mild, served with rice.

9. Spinach and ricotta cannelloni pasta - VEG

With napoletana sauce, baked with cheese.

10. Creamy garlic prawns - LG

Australian prawns marinated in garlic and fresh herbs, sauteed in butter, white wine and cream and finished with parmesan. Served with rice.

SOUPS - \$7.00 EACH

11. Cream of roasted sweet pumpkin soup - LG DF VEG

A wholesome soup of roasted sweet pumpkin, sweet potato, sauteed onion, celery, carrot and coconut cream.

LG = Low gluten

DF = Dairy free

VEG = Vegetarian

SPECIALS - \$10.00 EACH

12. Chinese sweet and sour pork - LG DF

Tender pork pieces in sweet and sour sauce with stir-fry vegetables, served with rice.

13. Herb crumbed tuna and mushroom pasta bake

Penne pasta and tomato layered with creamy tuna and mushroom white sauce.

14. Cheese and chive quiche - VEG

Flaky filo pastry with a creamy savoury filling of egg, cream, cheese and fresh chives.



07 5445 7044

www.rangecare.com.au

Sad farewell to one of the early driving forces behind our Big Pineapple

FAMILY and friends last week farewelled with sadness one of the driving forces behind the success of Nambour's iconic Big Pineapple.

Elsie "May" Haupt (nee Steinhart) late of Woombye, passed away peacefully, surrounded by her family on February 14, 2023 aged 95 years.

Mother to Rhonda and Raylee, mother-in-law to Doug and Ken, and "Mardy" to her grandchildren and great grandchildren, May was farewelled at Gregson & Weight Chapel, Nambour on Thursday (February 23).

May became very good friends with Bill and Lyn Taylor who built the Big Pineapple (Sunshine Plantation). She was the first senior manager in the retail section working very closely with Lyn in presenting the range of products.

Work at Sunshine Plantation made for a busy but very enjoyable life and May loved her job very much, according to a book written by prominent local Kerry Brown in 2011 titled "Our Sweetest Icon. Sunshine Plantation's Big Pineapple 1971-2011".

The following is an extract from Kerry's book: It was always frantic at Sunshine Plantation with bus loads of people pouring into the place everyday, May said some of the buses were expected others were not, "Because it was growing so fast we were on our toes every moment of the day coping with the crowds and bus loads of people."

The commotion of excited visitors and busy staff in what was then a fairly small complex created an electric atmosphere: "The trains were always full of happy people and the constant chatter of small excited children made it such a great place to work, I always looked forward to going to work," May said.

May left Sunshine Plantation just before Bill and Lyn sold it in 1981 but she remained close friends with Lyn. Many years later they worked together again when Lyn started her Tropical Market stores in Brisbane. They traveled to the Philippines where May saw the horror of young children working in sweat shops and she under-

stood the meaning of Lyn's venture, saying it was all about aid abroad not commercial enterprise.

There was tremendous purpose and meaning in the work and May managed the stores for Lyn and helped open new ones: "I remember she had me traipsing through Toowong Shopping Centre when it was a construction site saying, look at this May, this is where the new store will be," May said.

May's story, in her own words

Later in life May would look after a little shop her granddaughter Sarah Amps ran in Montville on Saturday mornings. It was here that a local photographer, Ana Paula Estrada photographed her. The portrait (above) and May's story were part of a photographic series Ana compiled and is reproduced here.

Here is May's story. Her values. In her own words. Just as she would have wanted it ...

"I was born in Hunchy, Queensland, in 1927. My Mother's family was originally from New Zealand and Dad's family was from Germany. We were nine children in the family and grew up on a dairy farm in Hunchy.

"We didn't have time for sports, maybe we played cricket down on the playground, but we always had to do the floors, wash and polish them. There was always something to do. There wasn't that thing of today's children "that room is mine". We were three in a bed, and let me tell you, that kept us warm in the winter; we all looked after each other.

My mother was a good cook. Of course, she didn't have time to make fancy things, but we had good solid food. We used to walk three miles to school and three miles back. Some-



May Haupt pictured at her granddaughter's little store in Montville. Photo: Ana Paula Estrada

times when we got home, she would have a bunch of hot scones with plenty of butter which she made by hand. Life was wonderful.

Three of my brothers and one sister went to the war. One of them was killed in the Middle East and I became a man to my dad in the dairy farm where I learnt to do all kinds of things.

When I was 17, I decided I didn't want to milk cows anymore, so I went to Nambour and found a job and a house. I got married when I was 20 and we had two daughters. Now I have 5 grandchildren and six great grandchildren. (This has since grown!)

I worked for several years at The Big Pineapple, I also opened a few shops in Brisbane. I was 64 at that time. I thought it was time to come home. Now I come every Saturday to look after my Granddaughter's shop, I don't work hard but I still like contributing in some way.

I lived my era, I am 84, I can tell life has changed.

The values have changed. These new technologies and communications have changed our world. To love one another is the most important thing in life; show love and understanding. Stop and smell the roses, find the time to smell the roses.



Shedloads of treasure for collectors at Showgrounds

THE first Collectorama Fair for the year kicks off on Saturday March the 4 at the Nambour Showgrounds and there will be 150 dealers bringing shedloads of treasures for collectors and bargain hunters alike.

Stallholders, Ken and Linda Fisher will be there with collectables that were a part of Linda's childhood.

"When we inherited a garage full of Linda's mum's lifetime collection of "stuff" we decided to join the stallholders at Collectorama," Ken explained.

"Thanks to the kindness and knowledge of stallholders and patrons our "stuff" very quickly 'came alive'. Because of the stories, histories and the amazing imagination and skill of artisans through the ages, 'stuff' becomes treasure and can give great pleasure to the next generation of owners."

Linda added "Whether you are looking at a \$300 glass vase, a wooden toy in need of love or a comical \$3 conversation piece it is wonderful to engage with collectors and other stallholders. We have met so many characters there. It's always a fun day out."

Collectorama Fair opens at 7am and will run until 2pm. Entry is \$6 per adult (cash), and for kids under 12, admission is free. There is plenty of free parking at the Showgrounds. ATM's, food trucks and a friendly vibe makes for a great day out!

SUNDALE
Because we care

NOW SELLING



UNIT 52
\$325,000

98 Windsor Rd
Burnside

 1
 1

Impressive one bedroom unit now available at Rotary Gardens Village located in a perfect central location of the village.

You'll have access to wonderful amenities right at your door step with easy connection to some of the Sunshine Coast's best bowls, golf and RSL clubs nearby.

BOOK A TOUR

Please call Bronya on **0439 862 940** for more information or to book a tour


ROTARY GARDEN VILLAGE
BY SUNDALE



FROM
\$519,000

61 Jubilee Drive
Palmwoods

 2
 1
 1

You have nothing to do but to enjoy this picturesque 2-bedroom unit which is ready to move in now!

With some of the Sunshine Coast's best facilities on your doorstep, Palmwoods Garden Village offers residents a relaxed lifestyle and the perfect blend of privacy and connection to the community.

BOOK A TOUR

Please call Shorelle on **1800 572 422** for more information or to book a tour


PALMWOODS GARDEN VILLAGE
BY SUNDALE

sundale.org.au

Images are indicative and to be used as a guide only. Information correct as at February 2023 and subject to change without notice.

Share your views. Join the survey

Ted O'Brien
Federal Member for Fairfax
ted.obrien.mp@aph.gov.au



Do you have big ideas about how to can make our local community an even better place in which to live, work and play?

I want to hear your views and I've launched the Biggest Survey to find out.

It's an honour representing you in Parliament and with your help we've secured some big wins.

But, for me to continue fighting to deliver the outcomes our community needs, I need to know what's important to you.

Head to www.tedobrien.com.au to complete the survey by 31 March.

Electricity bills - I want to hear from you

Are your electricity bills going up? The increasing cost of living is stretching household and business budgets and is forcing many people to make difficult spending decisions. The cost of electricity is at the centre of this with treasury forecasting a rise in electricity costs of more than 56 percent.

Households and businesses are hurting and desperately need relief. This is a top priority for me, in my role as Shadow Minister for Climate Change and Energy.

I am seeking local examples of rising energy bills to help document and understand the ongoing impacts of the skyrocketing cost of living.

Please let me know by emailing ted.obrien.mp@aph.gov.au.

Stronger Communities Grants

A reminder that the Stronger Communities Grants for community groups are now open.

I invite local not-for-profit community groups in Fairfax to submit their Expressions of Interest (EOI) for grants of \$2,500 to \$20,000 for projects that deliver social benefits and boost local community participation.

EOIs must be submitted no later than 10 March for projects located in the Fairfax electorate. Up to 20 local projects will share in \$150,000.

For more information, ring my office on 5479 2800 or email ted.obrien.mp@aph.gov.au

Naked man clings to horse float. Police investigate

A man was arrested following a crash on the Bruce Highway, south of Yandina last month. Police said a car collided with several other vehicles and a guardrail in the southbound lanes at Kulangoor around 5pm on Sunday (February 19). The driver allegedly fled the scene on foot. A naked man was spotted a short time later, clinging to the side of a moving horse float and taken into custody. Investigations are ongoing to establish the circumstances of the crash, and the man was still assisting police with their inquiries on Monday morning.

GP closes in Montville

ANOTHER GP clinic on the Coast has closed as the doctor shortage continues to affect patients. Ochre Medical Centre in Montville has been shut for months because the company can't find enough GPs. Ochre's Queensland regional manager Sean Dickson says the closure is indefinite, and may become permanent unless more doctors can be recruited.

Paint Right Nambour offers expert advice about paints, gear and colours

The right products, right advice

Business Writeup: **PaintRight Nambour**

SECOND generation painter, Duke Anderson took over PaintRight Nambour in June 2022 and brings over ten years of experience in painting to the business.

Duke completed his painting and decorating apprenticeship at Nambour TAFE and is excited to return to Nambour, at the helm of his own business.

"I initially learned from my dad, but then went on to gain my formal trade qualifications right here in Nambour," Duke said.

"I had fantastic training in painting and decorating at the Nambour TAFE and would like to give a shout out to Craig Prout, who is a brilliant teacher."

Over the past ten years, Duke has worked on a number of high-profile projects, including the 2 billion dollar Crown Casino in Sydney, where he gained extensive knowledge and experience in decorative finishes.

Duke also worked in Sydney for prestigious specialist painting company, Hermosa Painting Finishes, who are widely regarded as industry leaders in decorative and luxury finishes. "What these experiences really taught me was the importance of using premium products, tools and techniques to get the best possible result," he said.

Duke was drawn to Nambour PaintRight in part because of its exclusive partnership with Haymes Paint.

"Haymes Paint is the leading Australian paint brand," Duke said. "Not only is it a premium product, it is made in Australia and the company is owned by an Australian family."

"At every opportunity I support fellow Australian businesses. I was actually shocked to learn how many paint brands are owned by overseas conglomerates. The Dulux Group, British Paint and Cabot's are all owned by Japanese companies, Taubmans is owned by an American company, and Wattyl owned by a Danish company," he said.

"We also support Resene, which is an exceptional New Zealand brand. It's a bonus that nine times out of ten we can beat the price of comparable products. There are many paints I will not stock because I will never compromise on quality. It has been terrific to jump into Nambour PaintRight and I would like to thank the previous owner for helping us through the transition and for sharing their knowledge and experience with me as they finished up in January."



The PaintRight team has industry experience and includes, from left, Lewis Trudgett who has worked in paint stores for the past 7 years, in-store colour consultant Kate Swan and owner and painter Duke Anderson.

In-store knowledge, industry experience

Duke is joined by two experienced staff members who bring their own knowledge and expertise to the store.

"Kate Swan has studied colour therapy and colour design and is our in-store colour consultant," said Duke. "She is able to provide our customers with expert advice on colour selection and interior design."

"When you are investing in painting your home, it is so important that you experience the 'wow' factor at the end of the job," he said.

Lewis Trudgett has painting experience and has also worked in paint stores across Queensland for the past 7 years.

"Lewis has incredible product knowledge and can work with our customers to make sure they are getting the right product for the job. His customer service is first class."

"We are all about making our store the 'go-to' destination for all your painting and decorating needs," Duke added.

"I have extended our range to capture all your needs. We stock brands including Cutek, Norglass, Rustoleum, Vehicle Raptor Finish, Resene, Haymes, Spa n Deck, Sik-

kens, Line Marking, Globalcote, roofing paint, garage floor paint and all your timber needs.

"We want our customers to experience the best combination of advice and information, as well as the correct tools and product."

"Sometimes this means directing customers elsewhere because when it comes to painting and decorating, some mistakes can end up costing thousands of dollars to rectify."

"If we can't help, we will point you in the direction of someone who can."

"I want to help people avoid the common mistakes I see everyday," said Duke.

"Whether it's skipping primers, using the wrong products, not preparing the surface correctly, or even applying the correct product incorrectly, we are here to help and advise."

"We are looking forward to meeting the locals and we even have coffee ready to go for our painters in the morning," said Duke.

"We have a routine delivery for tradies twice daily at 7am and 9.30am. After those times we deliver ASAP."

"We are also offering a 10% discount store wide to anyone who mentions this promotion."

► Nambour PaintRight is at 117 Howard St, Nambour. Phone 5476 3355.

Kenilworth the little town with a big 'art'

THE much-loved Kenilworth ArtsFest emerged from humble beginnings to become the greatly anticipated celebration of art that it is today.

"Using borrowed display boards and makeshift plinths, the Kenilworth Arts Council presented its first arts adventure," said Kenilworth Arts Council President Shirley Moreland.

"It was so successful, we did it again the next year and the next and the next and now here we are, celebrating

our 25th ArtsFest in the beautiful Kenilworth Hall."

From being part of the Kenilworth Show and Rodeo, ArtsFest has grown to be one of the key art shows on the Sunshine Coast.

"We have had wonderful support from the Sunshine Coast Council and our sponsors," she said.

"This year there is the \$5000 Kenilworth Art Award and the usual 2D and 3D prizes with the addition of a

new prize - \$500 for outdoor art made from recycled materials. Details are on our KAC website."

The Kenilworth and District Chamber of Commerce is joining in the celebrations with a Family Fun Day on Sunday May 28.

"Our Family Fun Day has something for everyone so come to Kenilworth between May 26 and 28 and help us celebrate!"



ArtsFest 2021 winner, Tania Small.

Brady's Fruit

FRUIT & VEGETABLE SPECIALIST
• Wholesale & Retail •

Col & Sandy Pearce

Ph/Fax 07 5445 9260

Park at your leisure where shopping is a pleasure

Woombye-Palmwoods Rd.
Palmwoods, Q. 4555

NAMBOUR

CONTAINER REFUND DRIVE THRU

STAY IN YOUR CAR
WE PAY CASH

FIND US AT - 1 WINDSOR RD, BURNSIDE

URBAN DEPOT

©URBANDEPOTRECYCLE

PAINT RIGHT

**UNDER
NEW
MANAGEMENT**



From left: Paint and Product Advice Specialist Lewis, In-store Colour Consultant Kate, Haymes Representative Michael and new Owner & Experienced Paint Contractor Duke.

Your best paint project ever starts with the best team.

Most paint stores are great at selling products but not always good at giving the right advice for your project. Paint Right Nambour provides not just the products but the in-store advice to help you avoid costly mistakes.

Why Choose Paint Right Nambour?



Paints, Stains & Equipment from premium brands!



Great Value Painting Supplies, Gear & Equipment.



Fantastic Deals for contractors and homeowners alike.



Colour scheme advice from an in-store consultant.



Colour Matching on the spot.



Friendly advice from professional painters on site.



Routine morning deliveries for tradies 7am and 9am.

Mention this ad and save 10%

PAINT RIGHT
From start to finish!

117 Howard Street
NAMBOUR, Qld 4560

E: nambour@paintright.com.au

07 5476 3355

www.paintright.com.au

OPEN Monday-Friday: 6:30am - 5pm | Saturday: 8am - 12pm



The friendly team at Nev Kane Real Estate includes, from left, Jason Sims, Jacki and Leon Kane and Angela Van Der Hoeven.

Selling Yandina real estate for 70 years

OPERATING in Yandina since 1953, independent agency Nev Kane Real Estate is a family business run by Nev, his son Leon and Leon's wife Jacki Kane.

With local knowledge and international reach, their experience in the sale of residential, rural, development and commercial properties have stood the test of time.

The agency continues to flourish with an extensive database of waiting buyers and current listings throughout the Sunshine Coast, including Peregian and Coolool Beach, Yandina and Ninderry, and as far as Landsborough and Woodford.

Having worked in real estate for over a decade, Sales Consultant Jason Sims has new listings weekly. You can call in to meet Jason or phone him on 0404 676 701.

Alternatively, drop in to Jason's Open Home on Saturday 11am-12pm at 40 Maple Court, Yandina where he is showing a modern 4-bedroom 2-bathroom family home backing on to bush land.

Agency principal Nev Kane is a Life Member of the Real Estate Institute of Queensland (The REIQ) and Leon Kane is an REIQ Fellow and long-standing committee member of the Commercial and Industrial Chapter.

Conveniently located beside the BP at 24 Farrell Street, Yandina, Nev Kane Real Estate offers buyers and sellers personal, prioritised service with the communication and commitment expected from a professional and experienced team.

► You can contact any of the team on 5446 7333 or email info@nevkane.com.au.



The Blackall Terrace Dental team includes Principal Dentist Dr Joseph Hollywood, Dr Riaz Vejdani, Practice Manager Joseph Reiner and Dental Assistant Sarah King.

New dentist joins the growing team at Blackall Terrace Dental

Business Writeup: **Blackall Terrace Dental**

BLACKALL Terrace Dental is proud to announce the addition of another dentist, Dr Riaz Vejdani (MDent) to its team, following a period of rapid growth for the practice.

With a focus on clinical excellence and individualised care, the practice is committed to providing the highest quality of dental treatment for patients across the Sunshine Coast.

"We are thrilled to welcome Dr Vejdani to our team," said Dr Joseph Hollywood (BDS), practice principal. "His values and commitment to patient-centred care align perfectly with ours at Blackall Terrace Dental."

Located in the health-hub district of Nambour, Blackall Terrace Dental offers a wide range of dental services, from routine check-ups to advanced treatments, using the latest technology. With the addition of Dr Vejdani, the practice is now able to care for even more patients in the region.

"As demand has grown over the last 12 months, we realised that we had to open up our

books to cater to new patients reaching out to us.

"With Dr Vejdani joining us, I'm pleased that we can continue to do that and know that he will be a great addition to the team," said Dr. Hollywood.

Dr Vejdani joins the practice from the Gold Coast and is now accepting new patients. As a welcome offer, he is providing all new patients with their first comprehensive exam for just \$199, which is a great opportunity for patients to book an appointment and experience the quality of care and thoroughness that Blackall Terrace Dental is known for.

"I truly believe in the importance of preventive care and educating our patients about their dental health," said Dr. Vejdani. "I look forward to working with Dr. Hollywood and the team to continue providing high levels of dental treatment for the Nambour and Sunshine Coast community."

► Patients can book an appointment by calling (07) 5441 3583 or visiting the website at www.blackallterrace.com.au.

Welcome to Sunshine Coast Audiology



Sunshine Coast Audiology

We are a new **independent** audiology clinic located at Sippy Downs, providing personalised hearing care to the community. We are able to recommend, fit and adjust hearing devices from all leading brands and will do what is right for you.

Our services include:

- **NOW OFFERING WAX REMOVAL** via **microsuction, curette or irrigation**
- Hearing tests for adults or school-aged children
- Hearing aid fitting, repairs and adjustment from all major brands
- Providers of the Hearing Services Program for eligible pensioners and veterans
- Tinnitus management
- Supply and fitting of ear plugs for swimming, noise and music



Emryn Maclachlan



Anita Burgess

Call **07 5378 2226** or email info@sunshinecoastaudiology.com.au

Shop 10, 1 Scholars Drive, Sippy Downs

www.sunshinecoastaudiology.com.au

Time to forget the recreation trail

I don't think this 48km Nambour-Coolool Recreation Trail idea ("Is it time to revive 'forgotten' Recreation Trail?", Gazette February 1) has been thought through despite the feasibility studies.

My concerns are the cost of building this, all the high priced consultants, the cost of maintenance, particularly rubbish collection and the high fire risk. A large area of this would be inaccessible for fire fighting equipment because it is wetlands.

I suspect it would receive little use, and end up like the Blue Heart wetlands sanctuary that is nothing but weeds.

Locals know it as the "snake pit", inundated with brown snakes and mosquitoes.

Council seems more interested in using emotive language like "biodiversity", "adaptive", and "sustainable" while spending a fortune on

Letters to the Editor

Do you have an opinion to share? A range of viewpoints leads to better debate and better outcomes. **Submit your Letter to the Editor** with your name and suburb to: editor@sunshinevalleygazette.com.au. Please understand there is a strict 300-words limit.

studies, to further their agenda.

There is more to the Coast than tourism. Awards may put the Mayor's picture in the paper, but it doesn't patch roads! As a rate payer, I'm tired of footing the bill.

– S Broese, Maroochy River

AUTOELECTRICS QLD

& Mechanical

Air Conditioning

Mechanical Repairs

Auto Electrics

Log Book Servicing

227 Nambour Connection Rd, Woombye

autoelectricssld.com.au

5442 2278



Community Bank
Woombye

Small town. Big Bank.

Everything you need, right here

We deliver the products and technology you'd expect from a big bank, plus the personal service you wouldn't.

As one of Australia's biggest banks, our heartland remains firmly local. As does our focus on you and the quality banking products you need.

Feel good about who you bank with. Try Bendigo.

Find out more. Call 5442 1311 or search Bendigo Bank Community Bank · Woombye.

 **Bendigo Bank**

Spiritual

FRIDELLE STANYER



ANIMAL WHISPERER
INTUITIVE LIFE COACH
REIKI MASTER
CLAIRVOYANT READER

Never trust your fears they don't know your strength
Athena Singh

FRIDELLE STANYER
0412 846 995
fridelle@innerharmony.net.au

For Sale

New 2 Bedroom Home For Sale
For Sale: **New 2 bedroom home with a 6 year structural warranty** in the beautiful Sunshine Coast area.
To enquire, please call 0421 005 121.

Wanted to Buy

Wanted:
Tractor, small dozer and small excavator.
Phone 0407 712 302.

Yoga

**HATHA YOGA/
PILATES
RELAXATION**

Hatha Yoga Pilates is held at the Woombye Hall:
Sat 9am & Wed 9.30am.
Beginners & Seniors welcome. Cost \$10. Call
Christine: 5441 6285 (Cert. in Pilates matwork;
Dip. IYTA: Yoga Instructor; USC Sport & Exercise
minor: Ex. Prescrip. for Health & Rehab.)

**Outspoken presents
Alexander McCall Smith**

ALEXANDER McCall Smith, often referred to as 'Sandy', is one of the world's best-loved authors. He has written more than 100 books including his novels that have delighted tens of millions of readers. Some of his best-known are his The No. 1 Ladies' Detective Agency series, and the popular 44 Scotland Street novels, now the longest-running serial novel in the world. More recently he launched the Ulf Varg series of Scandi blanc novels, set in Sweden.

While in Australia he will be promoting five books – Sandy is nothing if not prolific – and we are pleased to have him return to Maleny. This event has attracted a lot of attention. Please book today to avoid disappointment.

Our 'introducing author' is James Kirby, speaking about his recent book Choose Compassion.

► The event will be held at Maleny Primary School Hall on Friday March 10, 6 for 6.30pm. Tickets: outspokenmaleny.com.

Podcast series shines light on domestic and family violence

NAMBOUR Community Centre has launched a series of podcasts featuring interviews with women from Guyana, Japan, Belgium, China, Philippines, Papua New Guinea and Pakistan. Listeners can hear the women discussing the effects of domestic violence with project worker Kathy Young.

Over seven 30-minute episodes, the women outline their personal experiences of family and domestic violence or of witnessing it among family, friends and work colleagues.

"We greatly admire their strength, courage and resilience," said Settlement Engagement and Transition Support Worker Linda Dennis. "As far as we are aware this is a first for using



podcasts as a medium for creating awareness of family and domestic violence on the Sunshine Coast and particularly hearing the voices of migrant women. The series is an important tool to begin conversations about family and domestic violence."

The project was funded by the Queensland Government.

► To listen to the series go to www.open.spotify.com and search "cultural perspectives on domestic and family violence" or go to www.intotheheartland.podbean.com. For more information please contact Linda Dennis at Nambour Community Centre. Email settlement@nambourcc.org or 0402 128 978.

**Sad losses as
Woombye and
Nambour farewells
brother and sister**

THE Woombye and Nambour communities were saddened by the recent passing of a brother and sister from the well-known Foley family.

Coleen Brady nee Foley, 87, and her brother Garry Foley, 89, passed away in February within six days of each other. They lived in the Woombye/Nambour area from 5 and 7 years of age after moving to a small dairy farm with their family in 1940.

Colleen was buried February 15 while Garry's funeral was Wednesday February 22 at Gregson and Weight Nambour.

Garry and Thelma were married for nearly 66 years and lived in Woombye. Garry started his plumbing apprenticeship in Nambour aged



Coleen Brady and her brother Garry Foley, above left, passed away within six days of each other. Right: Garry Foley pictured more recently.



13 in 1947 and went on to do a lot of plumbing around Nambour and the Coast.

He started the well-known and long-established business Foleys Tanks at Woombye and, with business partners Merv and Shirley Franke, owned Nambour Plumbing Supplies and Action

Sports. Garry lived a full life and travelled to many corners of the globe. He loved fishing and even managed to get a world record Nile perch on a 15kg line in Africa which was donated to the local villagers.

He is survived by Thelma, sons Terry and Paul/Henry, grandchildren Shannon, Luke, Emily, Madeline and Angus and great-grandchildren Shaine and Henry.

"He was very well-loved," said Paul last week. "Everyone said he was a lovely man and he was. I couldn't have asked for a better father or friend."

Foley's Tanks has serviced the Sunshine Coast for over 60 years manufacturing aquaplate rain-water tanks.

DO YOU HAVE MUSCLE OR TENDON PAIN?

"I had been experiencing terrible pain in my shoulder and it was impacting badly on not only my work, but my life in general. Even washing my hair was agonising.

My Dr confirmed that I had bursitis, degeneration in the AC joint and a torn tendon and deltoid muscle. Apart from a cortisone injection to alleviate the bursitis, I was told there was not a great deal that could be done.

I was using both Panadol and Nurofen daily, and as a nurse, I knew that it was not good for my health to be taking so many painkillers.

I had my first iTera treatment with Adelle and although I was a little skeptical, I was desperate for some relief.

I signed up for the 20 minute trial and immediately after, the pain in my muscle and tendon was alleviated to the extent that I did not need pain medication for days.

After the second treatment I again experienced relief from pain. In the 14 days after my two treatments, I have only taken Panadol once.

I am probably still going to have to have the cortisone injection to deal with the bursitis, but I am so relieved that I have found something that is helping with the other issues.

Adelle is extremely approachable, friendly and knowledgeable about the iTera technology. She has given me heaps of information which I have found reassuring. The treatments themselves are relaxing, non invasive, not painful, and extremely affordable.

The best thing is that it has freed up my range of motion and I am not reaching into the medicine cabinet every four hours to take medication. I highly recommend this treatment for people suffering with chronic pain."

— Jacqui Blackmore, Little Mountain.



COCOON HEALING
Heal - Grow - Evolve

For the month of March, when you bring a friend you will both receive your treatments for 50% off.

Contact Adelle at Cocoon Healing on **0403 996 081** or adelle.gauci@yahoo.com.au
www.cocoonhealing.net @ f



Nourishment for the body and soul: locals can get to know their Community Garden and its members at an Open Day March 12.

Palmwoods Community Gardens: where veges are nourished and friendships grow

PALMWOODS Community Garden will hold an Open Day on Sunday March 12 with a guest speaker from 'Backyards for Diversity'.

Everyone will have an opportunity to learn more about wildlife and how to encourage it in our backyards and urban areas. Also, locals can get to know their Community Garden and its members.

Gail Lockyer said she chose to join 'Soil & Soul' Palmwoods Community Garden to gain a sense of belonging to the community through being involved.

"While I have a small garden at home, the community garden was far greater than my own ability to grow food," she said.

"I have formed some wonderful friendships when nurturing my own mental and physical health. I may attend a morning working bee for an hour, or just pop in to check on some seedlings. That is the beauty of being a volunteer – it fits in with your program.

"We have many visitors, including young

scouts, kindy students and some people with disabilities. They all get something out of their visit. It's beautiful to see a young child realise where their food comes from.

"We enjoy attending monthly dinners on a Sunday evening after a gardening session and workshops at the garden where I have learnt about self-sufficiency, bush tucker, organic gardening and solving some of my own garden issues.

"Volunteering draws together people of different walks of life, cultures, ages, skills and personalities and blends them into a wonderful community for all to benefit. It is evident amongst our members that it works."

Project manager Kay Nixon said people could choose to have their own plot or just join in for a very reasonable annual fee.

► For more info email: contactsoil.soul@gmail.com or phone Kay 0412 539 020 or go to the Palmwoods Community Garden Open Day Sunday March 12 at 3pm.

Happy Days event is chance for Woombye to rock and roll

THE date is set and the hall is booked for the Woombye Community & Business Association's Woombye Happy Days Event.

Woombye School of Arts Hall has been booked for Sunday May 7 2023 3pm to 10pm. Two bands have also been booked and locked in. Expressions of interest are being sought for WCBA business members who want to be stall holders at the event. Other businesses that may be interested in participating will be contacted with WCBA members given preference of placement.

Palmwoods Women's Day 2023 Breakfast

THE second International Women's Day Breakfast will be held at Homegrown Cafe Palmwoods on Wednesday 8 March from 7am- 8.30am. Come along and celebrate the day, celebrate the community and enjoy local company and great speaker Jeanette Allom-Hill and entertainment by Andrea Kirwin. Breakfast and drink included. Raffles on the day. Sponsored by Mindstar and Palmwoods Psychology. Tickets: www.events.humanitix.com and search "Palmwoods".

Nambour Chamber's Drinks@5

NAMBOUR Chamber of Commerce's first Drinks@5 event for the year is being held at Club Hotel Namba from 5pm on Thursday March 2. It's free to attend and members also get their first drink free courtesy of the Nambour Chamber and our Silver Sponsor Sunshine Coast Show Society. All of your questions will be answered regarding events and opportunities at the Nambour Showgrounds and the latest on Nambour's Tram, thanks to our speakers Jenny McKay and Peter Clarke. To RSVP go to www.nambourchamber.com.au and look under Events and Meetings.

Male Choir concerts in Beerwah and Buderim

THE Buderim Male Choir is presenting a new show, called Great Southern Land, a showcase of Australian music from bush ballads to the likes of Peter Allen and the Seekers, covering the earliest days of the colony to today. Our Great Southern Land concerts will be at Beerwah Community Hall on Saturday, March 11 at 2pm and Buderim War Memorial Hall,

Saturday, March 18 at 2pm. Meanwhile, the choir is looking for more singers. Rehearsals are at St Mark's Church Hall, Buderim, every Monday from 7pm.

To feed or not to feed? That is the question ...

Nature Watch News

with Donna Brennan from WILVOS Wildlife Volunteers. 5441 6200 www.wilvos.org.au

THERE is much debate about feeding wildlife. Unfortunately, when doing this, people don't think of all the other people doing exactly the same thing. Usually the food being fed is inappropriate and harmful to the native birds, marsupials and reptiles.

WILVOS are seeing an increase in debilitated birds suffering because of incorrect diet. It is tragic to see so many magpies suffering from metabolic bone disease. Research conducted in the local area often points to food such as bread being thrown out for the birds by numerous people. I'm sure it is no fun for the birds to be anaesthetized and xrayed.

The problem of feeding bread is exacerbated when it is thrown into water. Duck ponds in parks have well-meaning people throwing bread into the water, not realising the harm they are doing to all the animals that utilize the water. Bacteria levels in the water rise and the resulting cases of botulism appear. Birds are found dead and dying, which is very sad as this is so preventable.

After wet weather there is an increase in the number of seed eating parrots requiring veterinary care. When seed is put out for birds it should be left out for a limited time and then taken in. If seed becomes wet, it then becomes mouldy and toxic. Again, this kills birds.

Another disaster-in-the-making happens

World class cellist returns to Montville

MONTVILLE'S world-class cellist Sam Lucas is returning home to headline concerts in March and April.

He will be accompanied by South African pianist Berta Brozgul, and then Latvian violin sensation Sophia Kirsanova and acclaimed pianist Daniel Le.

Sam will again be playing his rare and beautifully-toned circa-1720 Nicolo Gagliano cello - generously on loan from the "Robert Schumann Hochschule", a Rhineland Music Academy - and estimated at more than 250 years old.

Sam and Berta will play an intricate and challenging program at Lucas Parklands on March 22.

"The two main pieces on the concert program are the Schumann Fantasia pieces for cello and piano - that's a major work for the two instruments," Ian Lucas, of Lucas Parklands, said.

"And, of course, there will be Beethoven's last cello sonata, Sonata No. 5, and it's also a monumental work - not written long before Beethoven died, and he was most certainly deaf when he was inspired to write it.

"Berta will also play a major work again by Schumann as well called 'Carnaval', a famous virtuosic piano work, so it will be a lovely afternoon."

Sam will also return to Lucas Parklands to play concerts at Montville on April 1 and 2, with Sophia on violin and Daniel on piano.

"The program has been designed to highlight the cello and violin; the piano will have an accompanying role in a very virtuosic way, because the stuff is very hard, and mostly we'll have three instruments on stage, and never less than two - it'll be great," Ian Lucas said.

Ms Kirsanova is in Australia at present, teaching at the Melbourne Conservatorium.

"The more Sophia performs in Australia, the



Sam Lucas will be accompanied by South African pianist Berta Brozgul.

more sought-after she is," Ian explained. "We're very fortunate to have her performing at Lucas Parklands."

Mr Lucas noted that concerts over the past two summers had been disrupted by storms on the range, which prevented some patrons from attending and impacted Sam's climate-sensitive cello.

"This cello is over 250 years old, made from a combination of different wood, and each piece adapts and expands to the change in climate and humidity in a different way," Ian Lucas explained.

► For performance and ticketing enquiries, phone 07 5478 5667 or 0409 623 228. Lucas Parklands website: www.lucasparklands.com.au.

Things go better with vintage, at Showgrounds

COLLECTORAMA Fair will be held at Nambour Showgrounds on Saturday March 4, from 7am until 2pm. There will be 150 dealers bringing shed loads of special items, so there's plenty of treasure to pick. Entry is \$6 each (cash). Kids under 12 free. Parking is free. ATMs on site as well as food trucks.

Retrospective art exhibition at Old Ambo

NAMBOUR'S Old Ambulance Station gallery is hosting an exhibition of artworks titled *Novo-spective/Retro-spective* by Peter Strickland, pictured.

Peter, now in his 90th year, divides his time between Brisbane and the Sunshine Coast. The retired secondary school art teacher is still painting. His talent was evident from an early age.

His classmates from high-school recall with awe that he could draw anything.

"As a youngster in class I was constantly being told that my paintings and illustrations did not make up for my poor spelling," said Peter. "In my 90th year I am no longer concerned with spelling. I can paint with freedom."

Over his life Peter has exhibited in galleries in Victoria, New South Wales and Queensland, England and Canada. His works appear in private collections in UK, Canada, Switzerland, France, Victoria and Queensland.

One of the galleries at the Old Ambo is dedicated to a review of his art. Peter's daughter, Kari, who is curating the show says that his family has been wonderfully supportive by sending art from all over Australia, and even from England, to be displayed. The other gallery will have contemporary works, mostly created in the last year.

"We chose Nambour for this exhibition because it has an extraordinary gallery and artistic community," said Kari. "Peter believes it is never too late to pick up a brush or pen and create, and he hopes to inspire and show what it is possible for one man to achieve."

► *Novo-spective/Retro-spective* runs at the Old Ambulance Station, 80 Howard Gallery Nambour, from March 1st to 31st. The gallery is open Monday to Saturday, 10 am til 3pm. All are welcome to a public opening event on Friday March 3rd at 6pm.



Ensemble Trivium coming to Maleny

MALENY Arts Council are privileged to bring the brilliant Ensemble Trivium to town with Hay'd'n Seek. This is a dynamic collective of Brisbane's leading musicians and their concert features sublime music for flute, viola, cello and piano. Don't miss our first show of the year - an afternoon of truly beautiful music! Sunday 19 March at 2pm Maleny Community Centre. Then join us on the deck for a glass of wine and to meet the musicians. Tickets malenyartscouncil.com.

Concert provides 'A Taste of Broadway'

A concert of Broadway hits by Nambour Community Choir *SingSpire Chorus* will be held in the NLC auditorium adjacent to Nambour Christian College in McKenzie Road Nambour on March 25 from 2pm to 4pm. Hosted by Marty Hunt the concert will feature guest artists Karen Law and Singergy Kids with proceeds going to Lily House. Afternoon tea and door prizes included. For information email: pat.atkinson1@bigpond.com or 0404 980 222. Price is \$20 from trybooking.com/CFSJQ or \$25 at door.

Laughter as medicine

PO Mei Kwong is a certified Laughter Yoga Leader and is excited to provide a free session on International Happiness Day as part of the Harmony Week celebration at Woombye School of Arts. The Free Laughter Yoga Session will be held on Monday March 20 at Woombye School of Arts. Bookings/info: pomeikwong@gmail.com



A bird is laid out ready for x-raying.

when our wildlife feed on dried cat and dog food left out for the animals. This can cause serious health issues, and it is not only the adult that is affected when unsuitable food is consumed. The young are then fed this food and can suffer very early in their lives.

Birds love fresh water, so it is easy to attract them to your yard with a terracotta, or some other cool material, tray of water. On really hot days ice cubes than be thrown in during the day to keep the water cool.

Plant native seeding, fruiting and flowering understorey and bushes. There are very good reasons to live by the motto "Let wildlife feed itself!"



Petrie Creek Bushcare work bears fruit, literally!

THE photo, above, is a Cunjevoi fruit growing on one of several of these local natives (*Alocasia brisbanensis*) planted some years back at the Florabunda Pocket BushCare site along Petrie Creek Woombye. It often grows naturally in association with the giant stinging trees and was said to provide an antidote to the sting (but maybe it does not actually work), by rubbing the cut leaf stem on the stung body part.

If you'd like to help or just enjoy the results, the next opportunities to join our BushCare activities are as follows.

• Florabunda Pocket on Saturday 04 March 2023 starting at 7am. (Meet near the back Rugby oval at Woombye. Come down Laidlaw Rd and turn right just before the Gymnastics Hall, and follow that road till you see us)

• Namba Creek on Saturday 18 March 2023 starting at 7am. (meet in The Model Railway Park off Florence St Nambour)

To join in the activities at these events you'll need to come in "long everything" bush protective clothing including boots/shoes and a hat. All tools required will be provided.

► For more info see the FB Page <https://www.facebook.com/PetrieCreekCatchmentCareGroupInc/> and www.sunshinecoast.qld.gov.au/bushcare or contact Norm Morwood 0409 63 99 44 or email normmorwood@gmail.com

State changes mind on youth crime

Andrew Powell

State Member for Glass House
glass.house@parliament.qld.gov.au



LAST week in Parliament, the Palaszczuk Government finally admitted they got it wrong in 2015 by watering down the state's youth justice laws.

Despite our calls to resume parliament sooner to deal with the current youth crime crisis, they have only now adopted our policy to introduce breach of bail as an offence for young law-breakers to keep Queenslanders safe. And it won't be debated and passed until mid-March. While a great win for Queenslanders, it's only the first step towards tackling youth crime and it shouldn't have taken this long.

A win for L Platers

We've recently delivered a massive result for young Queenslanders due to apply for their Learners licences. The Palaszczuk Government has once again bowed to LNP pressure to lower the cost of Learner licences to \$75, down from \$186.55. The fee remains three times more expensive than it is in NSW and Victoria, but it's still a great saving for teens.

Welcome new Maleny Commerce Executive

It was great to see a majority of the Maleny Commerce Executive, including President Spencer of Forest Heart Econsurery, going around again following their AGM earlier this month.

But it was equally exciting to welcome some fresh faces in Vice President Adrian (Shotgun Espresso), Treasurer Doug (Barung Landcare) and Committee Members Kim (Kim Herringe) and Melissa (Remax Hinterland). And a big thank you to our hosts Tranquil, Maleny!

Booloumba Creek Camping Upgrade

Locals and tourists alike are well aware of the beauty that is the Booloumba Creek camping area - it's popular for a reason. A construction company has been contracted to upgrade the Booloumba Creek 1 camping area. The renovation will see construction of two day-visitor parking areas, a new amenities block, and a new persons-with-disability campsite.



Palmwoods RSL mourns loss of past president

THE Australian flag was flown at half mast at Palmwoods & District RSL Sub Branch recently to mark the passing of Past-President Peter Murray, pictured.

Peter was born August 10 1945, and passed away on February 16. Peter was remembered as a jovial character and a great bloke who will be sadly missed. May he rest in peace.

NAMBOUR NEWS & CASKET



WE FIX MOBILE PHONES

• Stationery • Magazines • Lotto & Instant Scratch Tickets
• Newspapers • Gifts

We can home deliver your newspapers and magazines and we are also agents for Cartridge World.

Shop 28, 52-54 Currie St, Nambour
P: 5441 2029 | @NambourNews



Kelly Cork, above, will join Shaky Razor, below, and Steve Sparrow at Mapleton Hall.

Heart Baked Music coming to Mapleton Hall

HEART Baked Music as the name suggests is about music created by artists from a heartfelt place.

But more than that, Heart Baked Music wants to share warm and inspiring music at small halls and venues where artists can connect and form a relationship with the audience. Venues which have no noise or distractions.

Heart Baked Music is also about fairly paying artists with profits from an event going back to the community.

With this ethos Heart Baked Music has connected with the Blackall Range Lions to create an afternoon of exceptionally warm and inspiring music played



purchased at www.brhc.org.au/heartbaked-music

by extremely talented musicians in the intimate and beautiful setting of the historic Mapleton Hall.

All the profits from this event will go to earthquake torn Turkey via the Lions International network so that maximum value of your dollar will be seen on the ground.

The musicians for the upcoming Mapleton Hall event are, Kelly Cork, Shaky Razor and Steve Sparrow.

Mapleton Hall is at 31 Obi Obi Hall Mapleton. The event is Sunday March 26 from 2pm to 6pm. Tickets along with an optional grazing plate meal can be

QCWA Palmwoods Branch President, Georgea Rule and the sewing group meet regularly at the hall.



Palmwoods QCWA specialises in all things sewing & so can you

Club Profile: **QCWA Palmwoods Branch**

THE ladies of the QCWA Palmwoods Branch are a busy group and work tirelessly to contribute to their members and the broader community.

Last month, QCWA Palmwoods Branch President, Georgea Rule was nominated for an Australia Day Award in the Creative category by the Sunshine Coast Council.

"I was nominated by one of the ladies in my sewing group," Georgea said.

"I didn't win but it was very touching to receive that recognition."

The Palmwoods Branch of the QCWA was also successful with a GCBF Grant recently.

"As part of the grant, we have taken delivery of 6 brand new Janome sewing machines," Georgea said.

"Hall participants are welcome to use these machines whilst onsite in the various activities on offer at the Branch.

"Like many organizations over the last couple of years, COVID 19 did have an impact in shutting down many of the various activities that were in place, as did a building renovation.

"Since then, we have reinstated a number of activities previously run, added others and we are developing new activities for commencement when finalized," she said.

One of the ventures in the pipeline for the members of the QCWA Palmwoods is a 'new' program at the Hall entitled "Sewing for the Show" (Sunshine Coast Agricultural Show).

"We have launched this particular series of workshops and they will be held on a weekly basis," said Georgea.

"The idea is to encourage at least six members of the public to participate in an eight-week course to make an item/s of clothing to enter into the Show in June.

"It is not essential to be a member of the QCWA to join the group and should there be more than six participants interested, a second group of workshops is possible, although timing may become an issue. Currently we have some vacancies for this program.

"Another program in its infancy for consideration is an after school session for children aged eight years and older, to learn to sew.

"This will be really exciting because there have been at least two recent requests from parents to provide something along these lines."

At present, the next big fundraiser is being planned to take place around Mothers Day.

To find out more about the Palmwoods Branch of the QCWA, contact palmwoodscwa@gmail.com



Hinterland Tourism Welcome Guide going to print

IN 2022 Hinterland Tourism launched its innovative Welcome Guide campaign, the online version of which can be seen at www.visitsunshinecoasthinterland.com.au/publications.

Now on May 3 Hinterland Tourism will be launching a companion printed coffee table book.

"This will be a morning tea event and we hope to get as many people as possible along," said Hinterland Tourism President Kerry Brown.

"The executive have seen the sample copy, it is one of the most beautiful coffee table books I have ever seen, and I have no doubt our accommodation members will be delighted to have a copy of this book in every guest room as it showcases our region perfectly.

"Visitors will want to stay forever."

In other news production on the 2023-24 Hinterland Wedding Guide will start soon.

For information: info@hinterlandtourism.com.au

Hinterland Tourism social media reaches 4 million

THERE'S no doubt social media and Hinterland Tourism is a match made in heaven when it comes to getting the word out about the delights of our region.

In fact Hinterland Tourism's social media reach hit a remarkable 4 million people in February thanks largely to the prowess of the organization's digital marketing aficionado Marlene Murray.

"A massive congratulations to our Digital Manager Marlene on her outstanding social media management," said Hinterland Tourism President Kerry Brown.

"That's a remarkable result considering this is mostly organic reach.

"Not only does this reflect Marlene's outstanding marketing skills, it also tells us our region is what visitors are looking for."

For information: info@hinterlandtourism.com.au

Range Rivalry: Montville pips Maleny in 'Most Welcoming Towns' awards

THE Booking.com Most Welcoming Towns results came in recently with Montville coming in at number 5.

Maleny claimed number 6 spot after finishing first in 2021 and 2022. Montville came ninth last year.

Port Campbell and Halls Gap, both in Victoria, took out first and second places respectively, while Port Lincoln came in third and Toowoomba fourth.

Australia's Most Welcoming Towns 2023

1. Port Campbell, Vic.
2. Halls Gap, Vic.
3. Port Lincoln, SA.
4. Toowoomba, Qld.
5. Montville, Qld.
6. Maleny, Qld.

Search on for Queensland's Top Tourism Town

QUEENSLANDERS are being called on to nominate their favourite hotspots, local treasures, and hidden gems for the 2023 Queensland Top Tourism Town Awards.

Presented by the Queensland Tourism Industry Council (QTIC), the annual Top Tourism Town Awards recognise Queensland's outstanding regional destinations.

With nominations now open and closing Monday 6 March, you can nominate your favourite town through the QTIC website at www.qtic.com.au/top-tourism-award/



Do you suffer from fibromyalgia? Massage can help

Your Health with Linda Goggan

IMAGINE waking up every day, your muscles ache and your joints are stiff. You have trouble focusing mentally with no consistent clarity of thought.

Sometimes it just hurts to do basic daily tasks. This constant pain and mental fog backed up with headaches then lead to constant fatigue and exhaustion which often leaves you with a feeling of anxiety and great despair about your next day.

For approximately 1 million Australians this is their reality, this may even be you. Fibromyalgia can be described as a multi-symptomatic disorder with many sufferers finding themselves having to take a daily regimen of anti-depressants and muscle relaxants to try and achieve a relatively normal daily life.

As a practicing massage therapist, I have seen firsthand how supportive bodywork can be in the management and reduction of fibromyalgia symptoms.

According to researchers, fibromyalgia alters how your brain and spinal cord receive painful and non painful impulses, amplifying painful sensations.

Massage therapy is one of the best treatments available for fibromyalgia patients as it works to support this area by reducing stress hormones, boosts serotonin levels which aids with musculoskeletal pain relief.

There is this myth though that massage needs to be firm and painful for it to be of any benefit.

This is false and can scare a lot of people with this condition away from massage as it often hurts just to be touched.

Being trained in Oncology and Remedial Massage, I can deliver the same techniques to those experiencing fibromyalgia with a purposeful and gentle touch to aid in the relief in many of these symptoms and support them to achieve a restorative feeling and overall well being.

► For more information contact Linda at Sacred Body 0419175425 www.sacredbody.com.au.

Sunshine Coast Women missing out on Screening



ALMOST half of women over the age of 50 on the Sunshine Coast are not having a breast screen every two years as recommended by doctors.

BreastScreen Queensland Health Promotion Officer Gillian Duffy is urging women to put themselves first and book in for a screen.

"We have six services across the Coast and the mobile service will be conveniently located in Nambour Mill Shopping Village in March. We have early, late and Saturday appointments to make it easier for working women, and the service is free," Ms Duffy said.

BreastScreen Queensland is calling on all women to make their health a priority this International Women's Day and those aged 40 years and over to book a breast screen appointment. No doctor's referral is needed and appointments take less than 30 minutes.

"If you are female and over 40, take advantage of our fast, free and friendly service. It could save your life," Ms Duffy said.

► The mobile service will be at Nambour Mill Shopping Village from 6-18 March 2023. To book an appointment at any of the services just call 13 20 50 or for more information or to book online visit www.breastscreen.qld.gov.au

Tree-splitting lightning strike a little too close for comfort

THOUSANDS of lightning strikes lit up the skies over Nambour in the afternoon last month (February 14), but one gave Burnside resident Jim Egerton the fright of his life.

Jim lives right next to Burnside Park and was working in his front garden, when lightning struck a tree not 10m from where he was standing, splitting the tree and scattering wood in all directions.

"It hadn't really started raining but the skies were looking really dark," Jim said. "My wife Marie said I shouldn't go outside, but I wanted to finish the gardening before the rain came so I kept going."

"The next thing I knew was this bright flash of light and a very loud bang behind me and when I looked round most of the tree was in bits on the ground."

Jim later discovered that a pole on the edge of his garden had also been destroyed, and a small hole had been made in his roof.

The storm caused a power outage that affected around 900 Nambour homes, and many air-to-ground lightning strikes were seen. — Pic and story with thanks to Tony Bryant



Tree-splitter: Burnside resident Jim Egerton got the fright of his life when this tree was struck while he was working nearby in his garden.

Council waives permit fees for homeless, but is it enough?

IN recognition of the housing crisis and cost of living, Sunshine Coast Council has waived permit fees for those having to temporarily live in a tent, car, caravan or mobile home and who, due to extenuating circumstances, will find it difficult to pay.

Service Excellence and Customer Service Portfolio Councillor Christian Dickson said council understood rising housing pressures had placed a burden on many local families.

"Some people have no choice but to live in a temporary home until their circumstances improve," Cr Dickson said.

"Prior to today's decision, the \$514 application fee to apply for a temporary home permit may have made it difficult for people struggling to make ends meet.

"Waiving the fee for those who are experiencing financial hardship or other legitimate circumstances such as family or domestic violence, will help them gain approval for temporary housing sooner."

Approval is for a limited duration, depending on the type of temporary home: less than three months for a tent; six months for a car; 18 months for a bus, caravan, or mobile home.

"While this is a significant step in the right direction, there is much more work to do and we are continuing to look at mechanisms across council to find solutions."

• For information: www.sunshinecoast.qld.gov.au/Living-and-Community/Community-Support/temporary-home

'Virtue-signalling initiative' won't help much

THE permit fee waive was cautiously welcomed by Woombye resident Helen Andrew who has been advocating for what she thought should have been sensible and obvious rule changes.

"While I am happy to see that the Council has started to listen to the community, removing the fee is nothing more than virtue signalling as it comes with conditions and an end date of 30 June this year.

"Conditions include a family death, domestic violence or prolonged unemployment, chronic illness or a natural disaster.

"Removing the permit fee does not address that caravans and tiny homes are permanent housing choices, not temporary ones. These economical and environmentally friendly housing types must be recognised in the town plan and not be subject to a permit.

"The current permit is not fit for purpose as it applies to people wanting to live on-site

while building a house or looking after a site for security reasons. And, by the way, the fee still applies to these conditions."

Helen said other councils were doing more. "Fraser Coast has removed the permit process as long as certain conditions are met. Mount Alexander Shire in Victoria is considering allowing people to camp and live in a caravan or tiny house on wheels for an indefinite period of time without a permit. The Surf Coast in Victoria is trialling the use of tiny homes as permanent housing solutions, and the Shire of Esperance is leading the way in developing a local planning policy for tiny homes. Our council needs to do better for some of the most vulnerable in our community and recognise these as permanent housing solutions."

Helen said it was wrong that many residents who have to resort to temporary accommodation remained at risk of eviction by the Council.

New books landing on library shelves

Woombye Library News by Cathy Cash

WE will have plenty of new books landing on our shelves at the Woombye Community Library in March including two recent releases by popular author James Patterson (he and his team must never sleep), also "Without a Trace" by Danielle Steel, "Dead Tide" by Fiona McIntosh and "The One and Only Dolly Jamieson" by Lisa Ireland.

I'm looking forward to "I'll Leave You With This" by Kylie Ladd. This is another 2023 release and is described as a page-turner from first to last. It's about three very different sisters who band together on the third anniversary of their brother's death to try to track down the many recipients saved by his donated organs.

On the news front, here at the Library we are pleased to see the streetscape works on our corner are really progressing. Concreting has

been underway and you can see the concept taking shape. We can't wait for all the greenery to go in.

Most days there is access to the library from both sides so when visiting us just follow the signs and safe pathways set up by the council. You may see our internal doors closed at times but that is just to minimise noise and keep the cool air inside, so be assured that our dedicated library workers are maintaining normal opening hours. Naturally being an entirely volunteer run facility, there will be the odd occasion we are closed due to illness or unforeseen circumstances, so please bear with us in these situations.

Our first Big Balcony Book Sale of the year will be on Saturday 1 April, so don't be an April Fool and mark this date in your diary to visit us on the corner of Blackall and Hill Sts to browse a great selection of fiction and non-fiction titles plus childrens' books all at gold coin prices!

People power: Eumundi petitioners oppose Council's Streetscape Plan

CONSULTATION on the future of Eumundi's Memorial Drive resulted in 1312 petition signatures against a Council design and 107 signatures in support.

Council has now officially accepted the "Save Memorial Drive Petition" and agreed to conduct further independent consultation.

Petition Initiator Janet Millington said it was win for people power. "But we need to persevere until we can reach agreement."

At issue in the plan is loss of carparks, inappropriate pedestrian crossings and tree planting in the road corridor which are seen as dangerous and will destroy the town's heritage and traditional feel.

Urgent footpath, gutter and weather protection solutions have been delayed for many years and the Council design further reduces accessibility for people living with disabilities.

"The community is now looking to Council to halt work on the current plan while the design is reassessed," said Campaign Organiser Dr Sue Campin.

"We have invited all Councillors to Eumundi to understand the community's concerns first hand. Our town is a major tourist attraction because of its historic main street and artisan markets, and we want to retain these whilst ensuring Eumundi is a safe place for all."

Eumundi and District Historical Association President Donata Page said: "We believe the Council's plans contravene their own Planning Scheme Eumundi Memorial Drive Character Area heritage code, which specifically recognises and protects the wide roadway and views up and down the main street."

Locals are also concerned that works proposed by the Council include \$500,000 of State Government funding under the South East Queensland Community Stimulus Program meant for positive outcomes, not to "damage the history of the town".

Hopes to raise \$30k for Parkinson's

ADVOCATES will navigate some of the Coast's steepest terrain in a fundraising trek symbolising the difficult journey of someone newly diagnosed with Parkinson's.

Nurses, support group coordinators, community leaders, a politician and police officers will lace up their boots for the inaugural "1,000,000 Steps Ahead Of Parkinson's" through hinterland national parks over multiple days in April.

The goal is to raise awareness and funds for a dedicated specialist Parkinson's Nurse, contribute to early diagnosis support and provide greater access to educational resources, local clinics and therapies.

The event is a partnership between Parkinson's Queensland, Prestige Inhome Care and Wellways Carer Gateway. It will finish on Saturday April 22 at the Mapleton Country Markets, where there will be a community health event focused on providing locals with access to resources on aged care and disability support services.

These will include special guests, craft, fashion and local produce stalls and a lunch prepared by the Lions Club.

"My team and I see it as a privilege to support so many people living with Parkinson's disease around the country," said Prestige Inhome Care CEO and Founder, Nick McDonald.

State Member for Glasshouse Andrew Powell will be joining the other hikers. "Like most Queenslanders I have a personal and close relationship with someone living with Parkinson's," Mr Powell said. "To say it has turned their world upside down is an understatement."

If you are interested in sponsoring, donating, or coming to the community health event at the Mapleton Country Market, contact: jamesr@prestigeinhomecare.com.au

Property goes off the boil

NEW sales figures from real estate analysis firm CoreLogic show fewer homes are being sold on the Sunshine Coast and Noosa as conditions cool from historic highs.

New data shows fewer than 10,000 homes sold across the greater Sunshine Coast region, including Noosa, in the year to November last year — a fall of 30 per cent compared to the record-breaking previous 12 months.

It's also about 9 per cent below the five-year average. Homes are now spending an average of 46 days on the market, up from 15 last year.

Help create a place of cherished nature and ecological wonder

It's time to have your say on the Sunshine Coast Ecological Park draft master plan. Council is proposing to restore former farming pasture in the hinterland to lush rainforest creating a place of cherished nature and ecological wonder for generations to discover and enjoy. Submissions open 6 March and close 20 March. Visit Council's website for more details.

Grow it local to win great prizes

Wonky backyard veggies and creatively named chooks, it's your time in the sun, with entries open until 30 March for the annual Grow It Local Awards. Sunshine Coast growers in the backyard, school patch, kitchen windowsill or community garden have the chance to impress the nation and win a bumper crop of prizes. To enter and for more details, visit growitlocal.com.

Council traineeship opportunities

Calling all high school graduates and uni students! Are you looking to gain valuable skills, work experience and get paid? Apply by 12 March for a Sunshine Coast Council traineeship! Our trainees are paid to learn on-the-job for 12 months and complete a certificate qualification. Sound good? Visit Council's website to apply.

CUSTOMER CONTACT

sunshinecoast.qld.gov.au/Council/Contact-Council

Mowing grass has never been greener

This is all thanks to Council's new fleet of zero emission, 100 per cent electric ride-on mowers. The five new mowers are environmentally friendly and reduce noise pollution by 50 per cent. The fully electric mowers join Council's eco-friendly fleet of vehicles and plant tools, demonstrating Council's sustainability commitment.

One for the calendar

Watch Council's next Ordinary Meeting online or at Sunshine Coast City Hall Chambers on Thursday 23 March at 9am.

Is your business ready to scale up?

Enroll now in the "Scaling Up – a smarter way to do business" program to leverage your growth and expansion efforts, gain resources and support and drive business performance. Search 'Scaling Up' on Council's website. Program starts 10 March.

Invigorate your life

Have you registered for Council's low-cost Healthy Sunshine Coast program? The 2023 program has kicked off and includes meditation, family yoga, Zumba, Tai Chi and so much more. For more information and to register, visit Council's website and search 'Healthy Sunshine Coast'.

Ride to school for your chance to win

Ride, scoot or skate to school on Friday 24 March for National Ride2School Day for your chance to win! Four lucky students will win bike shop vouchers valued at \$500*. Register on Council's website before 5pm on 24 March. *Conditions apply.

'Everyone Belongs' on the Sunshine Coast

Celebrate our vibrant and diverse region with Harmony Week in 2023 beginning 20 March. The festivities will showcase a colourful array of food, dance, culture, sport and more! To see what's on, search 'Harmony Week' on Council's website.

Choose your own adventure today!

Keen to head outdoors and explore more of our stunning Sunshine Coast but becoming a bit tired of the same old route? Adventure Sunshine Coast is perfect for you! More than 250 walking, jogging, paddling, cycling, mountain-biking and horse-riding trails are mapped out across the region from the hinterland to the coastline and everywhere in between. Completely ad free, the website also categorises the trails from easy to difficult, where nearby amenities are, whether they are pram, wheelchair and family friendly, and much more. To choose your next adventure, head to adventure.sunshinecoast.qld.gov.au today!

Get the latest council news delivered directly to your inbox each week. **Sign up for the OurSC newsletter here**



sunshinecoast.qld.gov.au
mail@sunshinecoast.qld.gov.au
07 5475 7272



Rail duplication: five years on, where has the 'GO' gone?

by **Jeffrey Addison**, Sunshine Coast Commuter Advocate



SATURDAY 9 June 2018, Deputy Premier Jackie Trad and Transport Minister Mark Bailey arrived in Nambour to announce \$160.8m funding for the 17km rail duplication from Beerburrum to Landsborough.

It represented 20% of the cost of the \$780m project.

That made \$550m available, given the Federal government's historic \$390m contribution announced in May.

The Deputy Premier said that planning would continue during the 2018-19 financial year before the five-year construction period was set to begin in 2019-20.

A tweet at 10:37am that day by the Transport Minister said:

It's GO for Sunshine Coast rail commuters with Palaszczuk @QldLabor Govt \$160m in budget to upgrade Beerburrum to Nambour including duplicating track Beerburrum-Landsborough, 4 station upgrades, 2000 extra car parks, dual platforms = 18 extra daily services, 3 minutes quicker to Brisbane.



Mark Bailey MP @MarkBaileyMP · 09 June 18
It's GO for Sunshine Coast rail commuters with Palaszczuk @QldLabor Govt \$160m in budget to upgrade Beerburrum to Nambour incl dupl track Beerburrum-Landsb, 4 station upgrades, 2000 extra car parks, dual platforms = 18 extra daily services, 3 mins quicker to Bris @AnnastaciaMP



Since that announcement, made 5 years ago this June, the Sunshine Coast is wondering where their rail line has gone.

At the time of writing, not one sleeper has been laid of the 13km tracks.

The TMR website says an announcement is expected in late 2022 for the heavy rail works, but to date there's been silence on when the 'GO' gets going.

The early works package that included a 1km realignment of Steve Irwin Way and changes to Moffat Road to accommodate the tracks, are underway.

Work has also started on one of the 'park-n-ride' projects with 300 carparks to be added at Landsborough.

The Landsborough bus interchange is under construction.

As part of the works, 50 more carparks are to be provided at Nambour and 'up to' 300 carparks at Beerburrum.

A quick tally reveals that of the 2000 carparks announced in the Minister's tweet, only 'up to' 650 may be provided, leaving a minimum 1350 carpark short-fall.

Since the state government failed to secure additional funding from their federal counterpart to date, the length of the rail duplication has been cut back to Beerwah, leaving the project 4km shy of its destination, and some \$230 million shy of its cost.

To those wondering why our rail is taking so long to materialize, you need look no further than the Queensland budget papers. It's a litany of underspend.

Over the past four years to 30 June 2022, they've spent \$61.96m when they should or could have spent the \$132.671m budgeted. That's less than half, just 46.7% to June 2022.

When will heavy rail works start?

What happened to the 1350 missing carparks?

Will we get the promised trains?

We're looking forward to the 18 extra services promised and the 3 minute quicker trip to Brisbane – but given that 9 extra trains promised in 2015 never materialised, we wonder if our Government promises ever come true?

As for the \$230m funding shortfall where even the state government's federal counterpart hasn't come to the party, perhaps it has something to do with the \$2.7 billion that the Premier suddenly found to fund her beloved Gabba reconstruction – while critical rail to the Sunshine Coast builds at a snail's pace.

Time to GO.



Mark Frawley says his business has enormous potential for growth and would guarantee an active client list from day 1.

Range Carpet Care business for sale

RANGE Carpet Care was established in 1987 by Mapleton couple Mark Frawley and his wife Roxanne to provide carpet and upholstery cleaning across the hinterland from Nambour to Maleny.

After spending the past 36 years building a stable and solid base of regular clients, Mark is putting the business on the market in order to enjoy some well earned retirement.

"A lot of the work is seasonal but I have also built a base that includes the Health Department and the Education Department," said Mark.

Included in the sale of the business is a van, an extraction machine, two electric heaters, carpet and upholstery tools and hoses.

"The carpet cleaning equipment can also be used for tile cleaning - with an attachment. Pest control and leather cleaning are two other areas I never went into, but which have enormous potential," said Mark. "But for someone new coming into the business, it is an immediate opportunity to scale up according to their own goals and secure work in bond cleaning

and other commercial areas. There is a great deal of scope for expansion.

"It is actually a very simple business and apart from one small fortnightly ad in this newspaper, all of the work has been repeat business or word of mouth. I haven't used social media.

"On average, I work between 30 and 50 hours a week and it has been a great business."

"I have developed a reputation for reliability, honest appraisals and quality work and I can also offer hypoallergenic and natural detergents, which is becoming more important to people.

"Whoever takes on this business will be buying work from day one. It would also suit someone with an existing cleaning or pest control business who wishes to expand their territory by purchasing my customer base. I am more than happy to stay on and train the new owner."

► Price: \$100,000 negotiable. Contact Mark on 0418 776 578 for more information.



From left, Ken Guy Buderim selling agents Matt Coutts, Jonny Marshall & Michael Barr

Exceptional titled land is ready to build on at Burnside

WINDSOR Park Burnside is an inspiring new development by a highly experienced team that has deep roots on the Sunshine Coast and value all that the community and environment has to offer.

"Their goal was to provide the people of the Sunshine Coast with land that is of exceptional quality, and that meets the strictest of standards, while also supporting the uniqueness of each individual block and the vision of its residents," said Ken Guy Buderim selling agent, Jonny Marshall.

"Surrounded by mature trees, waterfalls, and birdlife, each lot is unique and offers buyers the opportunity to design their dream lifestyle the Sunshine Coast is renowned for."

The generous blocks range in size from 450m² to 6,205m² and are set in a desirable hinterland setting which captures breezes, and

boasts views from these elevated blocks.

"Stage 1 construction is complete on the 31 registered lots, so land buyers can start building today," Mr Marshall said.

"At this stage, 30% of the Stage 1 registered lots are either sold or on hold.

"There's also a great opportunity until the end of March 2023 for land buyers to take advantage of the \$5,000 Landscaping Incentive (terms and conditions apply), to secure their ideal lot.

"We are excited to welcome new buyers to visit the site to immerse themselves in the beauty of this Sunshine Coast location."

► Contact Jonny Marshall on 0481 102 039 or Michael Barr on 0466 961 644 (or your preferred agent) to find out more about Windsor Park Burnside, or visit www.windsorparkburnside.com.au.



This low-set brick home is close to cafes, shopping & schools.

Opportunity in the heart of Maleny

AGENT'S CHOICE: 68 Maple Street, Maleny. Expressions of interest closing March 3.

LOCATED in the heart of Maleny's commercial and residential area is this low-set brick home waiting for its new buyer to capitalise.

Create a family home with connection to community and all its amenities, create income with a long or short-term rental, or move your business here and develop a unique workspace.

The home itself is perfectly set back from the road on its large 3,060m² block.

The light-filled solid brick home boasts a

practical layout, useable kitchen and hardwood floors ready to be revealed.

There are formal and informal eating areas leading to a sundeck overlooking the rear of the property.

Downstairs is a great workshop area and separate toilet.

► Book your private inspection today with exclusive agent Rodney Millett on 0477 702 073. Inspections are strictly by appointment only. Please respect the peace and quiet of neighbours and do not enter the property grounds without being accompanied by an agent.



A dozen reasons to consider Rotary Garden Village for your retirement options

Business Writeup: **Sundale Rotary Garden Village**

RENOVATION work is underway at Sundale's Rotary Garden Village Retirement Community, with 12 units undergoing significant facelifts.

The work will see kitchens, bathrooms, bedrooms and living areas refurbished and the units sold to retirees who are looking for a vibrant and engaging lifestyle.

CEO Helen Sharpley said Sundale has been part of the Nambour community for the past 60 years.

"Retirees are looking for a low maintenance lifestyle within a caring community, and that's exactly what's on offer at Rotary Garden Village," Ms Sharpley said.

"Dotted throughout the expansive seven-acre hinterland site are 80, one, two and three-bedroom units, which all feature established gardens.

"Renovations to the 12 units are expected to be completed by late March.

Lesley Cole downsized to Rotary Garden Village Retirement Community three years ago.

"The first day I drove in I felt very comfortable. The scenery, the set-up, I felt like I was home," Mrs Cole said.

"There are a lot of very kind and very considerate people at Rotary. When you get to a cer-



tain stage in life, that's exactly what you need."

Setting Rotary Garden Village Retirement Community apart is its range of stimulating and engaging lifestyle activities and services. However, should a resident's situation change, continuum of care is available via Sundale's In-Home Care team or at a co-located Care Centre.

Late last year, Sundale's Bowder Lodge Care Centre was named the Sunshine Coast's only Five-Star residential aged care home by the Australian Government.

Sundale is a community-based, not for profit, retirement and care centre organisation that supports the needs of its community via outstanding care and assistance services.

WE WANT YOU!

HC/MC Driver

- Guaranteed minimum 38 hrs per week.

We are seeking a reliable and self-motivated team member for immediate start.

- Coastal Landscape Supplies is looking for an **Experienced Truck and Dog Tipper Driver**
- Must have at least **3 years minimum** experience in a Truck and Dog
- Mechanical knowledge is preferable
- Bobcat/Loader experience is preferred
- This role involves picking up materials from Quarries and delivering back to yard as well as delivering to jobsites and residential homes
- This role also involves carrying out sub contract work covering Sunshine Coast and Brisbane area. All work is local to Kunda Park
- Occasional weekend work
- Must be reliable and honest
- Must possess a great attitude and neat appearance
- We are a local family owned business
- Uniform shirts supplied after trial period
- **Paid leave and great rates**

Hours of work are Monday to Friday, normally 45 - 55 hours per week - weather permitting.

EMPLOYER QUESTIONS

Your application will include the following questions:

- Do you hold a Construction Induction Safety certificate (White Card)?
- Do you have experience driving tipper trucks?
- How many years' experience do you have as a Truck and Dog Driver?
- Are you willing to provide a copy of your driving record history?
- Are you willing to undergo pre-employment drug and alcohol screening?

COASTAL LANDSCAPE SUPPLIES

07 5453 7100 18 Kerryl St, Kunda Park

www.coastallandscape.com.au | kylie@coastallandscape.com.au

BARK & MULCH | SOILS | GRAVEL | PEBBLES | SAND | SANDSTONE | ROCKS | ROADBASE | TURF | TIMBER | PAVERS | PLUS MORE!

GET YOUR ROCKS OFF... US



Blocks of 900m2 are scarce and this home will not last long.

Elevation, breezes and views in Yandina

AGENT'S CHOICE: 12 Warner Crescent, Yandina. Offers over \$985,000.

YANDINA continues to bring premium property to the market and this spectacular example, set on an elevated 900m2 is priced to sell and will not last long.

Set on the high-side of Yandina's most sought-after estate, this beautiful 4 bedroom home will impress all who see it. The high ceilings and vinyl-plank floor create an open, bright space. All the bedrooms are well separated from each other for peace and privacy. The large master suite at the rear of the home has his and hers walk-in robes and a generous ensuite with dual-vanities and large fully-tiled shower.

The large open-plan living/kitchen/dining area opens up to the rear patio via twin sliding-glass doors, making this the perfect space for entertaining.

Yandina continues to buck market trends and remains a boom suburb on the Coast.

► For more information and to book a private inspection, contact Remax Nambour's listing agent Scott Walters on 0447 474 982.

Country living in beautiful Flaxton

AGENT'S CHOICE: 41 Cynthia Hunt Drive, Flaxton. Offers over \$1.9 million

SITUATED privately at the end of a court, 41 Cynthia Hunt Drive in Flaxton is a stunning house situated on a fully-fenced 4,423 m2 block.

The fully landscaped property features established fruit, avocado, custard apple, and citrus trees, and a kitchen garden which provides fresh produce daily.

This property has it all, including four spacious bedrooms, two bathrooms, and an ensuite to the master suite. There is plenty of space for families or couples. The master suite is also complemented by a large walk-in wardrobe, and separate toilet while the other bedrooms all feature built-in wardrobes.

The kitchen is fully equipped with high-end appliances, granite bench tops, and a spacious open-plan living area, plus, another separate living area complete with a fireplace.

The property also features ducted cooling and heating. There are enough solar panels and water tanks to be self-sufficient.

There are two huge workshops, perfect for those with a passion for cars, plenty of secure parking and another remote double garage for easy access into the home.

The outdoor covered entertainment area, fully fenced yard and resort-style swimming pool offer relaxed easy living all year round.

► Schedule an inspection today by contacting Vanessa Brunton of VB Real Estate on 0467 448 850.



This property provides plenty of space for families or couples.



Richard Krausz

2022 was a massive year, and in recognition of Richard's achievements, he received the **TITAN award** - the highest tier behind Diamond in the annual commission-based accolades in the RE/MAX system.

If you're looking to sell with a **multi award winning agent**, give Richard a call.

Richard Krausz 0422 997 810   @richardkrauszremax



RE/MAX



MALENY & HINTERLAND REAL ESTATE

SALES | PROPERTY MANAGEMENT | COMMERCIAL



WELCOME TO THE MARKET

68 Maple Street **MALENY**

3 2 2

Located on the main street of Maleny, in the heart of its commercial and residential area is this low set brick home waiting for its new buyer to capitalise.

As the Hinterland continues to thrive, now is the opportunity to secure this residence with its commercial potential.

- North facing 3060m² block in the heart of Maleny
- Sunroom at the rear of the property
- Double car garage with internal access
- Leafy, established gardens with mature trees and plantings
- Hardwood floors ready to be revealed from under existing carpet

FOR SALE
Expressions of Interest

INSPECT
By Appointment

Rodney Millett
0477 702 073
rodney@malenyrealestate.com



580 Mountain View Road **MALENY**

3 2 1

First time offered to the market, this immaculate colonial style property is positioned on a generous 3000m² parcel of lush rainforest surrounds and offers an enviable lifestyle in a premium Hinterland location.

- Neutral colour palette, high ceilings and bay windows
- Natural timber flooring
- Modern kitchen with stone benchtops, quality appliances and gas cooking
- Ducted A/C and fireplace
- Wraparound covered verandahs

Located only minutes to Maleny township, in a sought after and rarely available address; be quick and inspect today!

FOR SALE
All Offers Considered

INSPECT
By Appointment

Jess Luthje
0438 616 064
jess@malenyrealestate.com



PRICE REDUCED

429 Mountain View Road **MALENY**

3 2 2

This stylish and much-loved home is perfectly positioned and designed to capture one of the absolute best views of the Hinterland.

- Panoramic views to the Glasshouse Mountains, the Sunshine Coast & Brisbane City
- Deck extending the length of the home with an elevated sundeck
- High raked ceilings
- Tasmanian Oak flooring throughout
- Fully fenced 4016m² block

Just a 4-minute drive away is the bustling township of Maleny and all its amenities; primary and secondary schools, medical centres, hospital and of course its celebrated cafes, restaurants and shopping.

FOR SALE
\$1,445,000

INSPECT
By Appointment

Rodney Millett
0477 702 073
rodney@malenyrealestate.com



269 Witta Road **WITTA**

4 1 5

Combining 11 acres of 'Land for Wildlife', walking tracks, creek, remnant rainforest, open grazing land and a rambling brick home, this property meets the brief for privacy, tranquillity, and nature.

- Large deck looking onto palms and stunning forest trees
- Open plan lounge / dining and kitchen with cathedral ceilings
- Well-appointed large kitchen
- 12m x 6m shed with power
- Creek and separate paddock

One of the outstanding aspects of this property is the gentle nature of the land; it offers a peaceful and private retreat with room to grow and put your own stamp on the place over time.

FOR SALE
\$1,550,000

INSPECT
By Appointment

Jess Luthje
0438 616 064
jess@malenyrealestate.com



756 Bald Knob Road **BALD KNOB**

4 2 3

Designed to sit perfectly within its landscape with a truly amazing outlook, this is one unique offering.

- Cleverly designed home; picture windows take in the amazing views
- Sleek, modern styling throughout, bamboo flooring & quality carpets
- Outdoor entertaining area to the North and East perfect for large gatherings
- Stunning rocky creek running through the property, two spring fed dams
- The 13.5 acres (5.5ha) would suit cattle or horses

Whether you're looking for the forever home with room for animals, or the lock up and leave weekend retreat, you'll be supremely impressed with what's on offer.

FOR SALE
\$2,199,000

INSPECT
By Appointment

Jess Luthje
0438 616 064
jess@malenyrealestate.com

5494 3022

malenyrealestate.com

Maleny & Hinterland Real Estate

malenyandhinterlandrealestate

PROUDLY A FAMILY OWNED AND OPERATED AGENCY IN THE HEART OF MALENY



WINDSOR PARK

BURNSIDE · SUNSHINE COAST



30% sold/or on hold



BURNSIDE, 'Windsor Park' Stage 1

PRISTINE REGISTERED LAND READY TO BUILD ON TODAY

Stage 1 construction complete with 31 lots registered and ready to build on today.

There's a great opportunity to secure your ideal lot at Windsor Park, Burnside so visit the site today to immerse yourself in the beauty of this pristine Sunshine Coast land development.

\$5k landscaping promotion available until March 31, 2023.
*Terms & Conditions Apply

- Stage 1 land is registered and ready to build on now
- 20 minutes from Mooloolaba Beach
- 20 minutes from Sunshine Coast Airport
- Minutes from exceptional primary and high schools
- 1hr 10minutes from Brisbane International Airport
- Minutes from bushwalks and waterfalls

Lot sizes 420m² – 6,209m²

Price: From \$420,000

Inspect: Agent onsite each Thursday, Friday & Saturday from 9-9:45am

Jonny Marshall 0481 102 039

Michael Barr 0466 961 644

Or your preferred local agent

www.windsorparkburnside.com.au



VB Real Estate

FREE Marketing, nothing to pay until the property is SOLD.
Call us today, we have several qualified buyers, waiting to purchase
a home on the Sunshine Coast & Hinterland.

Visit www.vbrealstate.com.au to view further details of the property and video walkthrough.

Vanessa & Cheyne Brunton



18 Strathford Avenue, NAMBOUR
3 bedroom 2 bathroom 2 car
offers over \$795,000



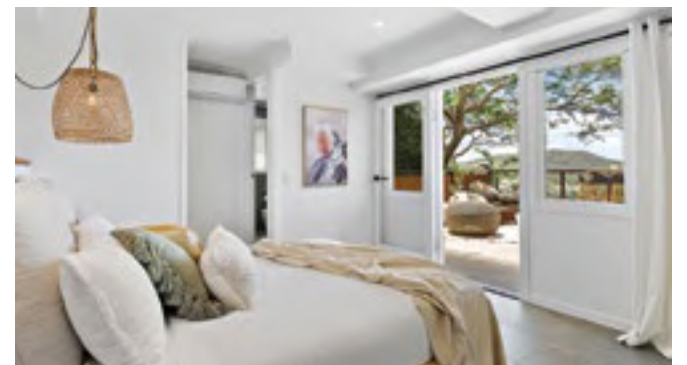
41 Cynthia Hunt Drive, FLAXTON
4 bedroom 2 bathroom 4 car pool 1 acre 2 lge colorbond workshops
offers \$1.9million



Unit 8/43-45 Park Road, NAMBOUR
2 bedroom 1 bathroom 1 car
private fenced courtyard low-mid \$400,000



1/11 Sunnyside Court, MALENY
4 bedroom 3 bathroom 2 car
dual living mid-high \$800,000



13 Crescent Drive, NAMBOUR
5 bedroom 2 bathroom 2 car
offers over \$995,000

BUSINESS - LIFESTYLE - OPPORTUNITY



119 Delicia Road, MAPLETON
3 bedroom 1 bathroom 4+ car 19 acres
corner block Established Landscaping Business



UNDER CONTRACT

25 Hilltop Crescent, COOLUM BEACH
3 bedroom 2 bathroom 2 car
\$1.3million



"LILLYPONDS PARK"
RELOCATABLE HOME & SINGLE CARPORT
Unit 8 Lillyponds, MAPLETON
1 bedroom 1 bathroom 1 car \$95,000



UNDER CONTRACT

Unit 73/18 Doolan Street, NAMBOUR
2 bedroom 1 bathroom 1 car
\$320,000



UNDER CONTRACT

80 Coes Creek Road, BURNSIDE
5 bedroom 3 bathroom 2 car
Offers over \$599,000



Unit 19/18 Doolan Street, NAMBOUR
2 bedroom 1 bathroom 1 car
\$345,000



Vanessa & Cheyne Brunton

0467 448 850

vanessa@vbrealstate.com.au • www.vbrealstate.com.au



Look Local

Trades & Professional Services

Cleaning/Pest Control

Sutton's CLEANING SERVICE

- SEPTIC SYSTEM *Locally Owned*
- TREATMENT PLANTS *& Operated Since 1980*
- GREASE TRAPS
- HYDRO EXCAVATION
- LIQUID WASTE
- COMMERCIAL & DOMESTIC

5447 6477

www.suttonscleaning.com.au

RANGE CARPET CARE Citrus or Hypoallergenic Detergents Available

Nambour > Hinterland Coast

- Same owner operator - SINCE 1987
- Environmentally safe & clean solution
- Commercial & residential
- Help reduce levels of dust mites

WARNING Dirty carpets are a health hazard

BROLLY Fabric Protection
Ph 5445 7611

Professional Services

Hinterland ACCOUNTANTS + ADVISORS

Supporting local business with

- Accounting and Tax
- BAS and GST
- Financial Statements
- SMSF and Superannuation
- Planning and Business Structuring
- Business Purchase and Sale

1/13 Turner St, Beerwah
5439 0188 | admin@hintertax.com.au

innov8 ACCOUNTING & ADVISORY

- Accounting
- Business Advisory Services
- Tax Return Preparation
- Company, Trust, Partnership, Individual
- Self-managed Super Funds



5442 1234
info@innovateaa.com.au
www.innovateaa.com.au

4 Pinegrove Rd Woombye

Electrician

ACW Electrical Pty Ltd

Small Job Specialist

Quality Workmanship on Domestic Installations & Repairs

40 Years Experience

M: 04 27 170235

Water Services

HW WS SEPTIC PUMP OUTS

Hinterland Waste Water Services

Peter
0428 723 082

hwws@bigpond.com

HPS

Hinterland Pump Services
Glasshouse to Gympie

Murray
0416 256 536

Blinds Awnings

Servicing The Sunshine Coast For Over 30 Years

INDEPENDENT BLINDS & AWNINGS

0411 872 060

- Ziptrak & Zipscreen • Blinds & Awnings
- Clear PVC Blinds • Plantation Shutters
- Security Doors & Screens

Call us today for a free measure and quote!

www.independentblindsandawnings.com.au
QBCC No. 1096933

Landscaping Services

WOODCHIP / FOREST MULCH

\$25 per cubic metre + GST
(8 cubic metres minimum delivery)

54 459921 or 0412 586 131

We also provide complete tree services including pruning, removals & consultancy



Rubbish Removal

2-GO Clear-Space !!

RUBBISH (ANYTHING) REMOVAL

Fridges, Beds, Mattresses, Lounges, including clutter

FREE QUOTES

Small Clutter or Full House Clearances

The Clear-Choice !!

CALL NOW 0477 772 138

SUNCOAST PROPERTY MAINTENANCE

- PRESSURE CLEANING**
- ▶ Restoration of Decks
 - ▶ External House Wash
 - ▶ Roof Cleaned & Painted / Sealed
 - ▶ Driveway Cleaned & Sealed
 - ▶ Pool & Outdoor Areas
 - ▶ Shade Sails
 - ▶ Solar Panels
 - ▶ All Concrete Areas



ABN: 84 703 106 220
0403 213 778 Suncoast Property Maintenance
www.suncoastpropertymaintenance.net.au

Auto Services

CARAVANS WE BUY, SELL AND CONSIGN

P: 0408 758 688

Plumber

WOOMBYE PLUMBING 30 Years Experience RURAL PLUMBING SPECIALIST

- RAINWATER TANKS & INSTALLATION
- DRAINAGE
- MAINTENANCE
- EXCAVATOR HIRE

HAYDEN KITHER
0490 308 785

hayden@kitherplumbing.com

135 OLD PALMWOODS ROAD, WEST WOOMBIE

Concreting

CONCRETING & LANDSCAPING ALL AREAS

- Footpaths • Driveways • Slabs • Stencil
- Stamped • Concrete Saw Cutting
- Exposed Aggregate • Plain • Bobcat
- Excavator & Truck
- Quality work at affordable rates
- Free Quotes & Free Advice Anytime
- Credit Cards

Ph Guy 0416 202 044

www.concretecontrol.com.au

QBCC Lic no. 1129605

CONCRETE WORX We Do It All!

- 35+ Years Experience
- Decorative Stamp and Stencil
- Coloured and Exposed
- Shed Slabs and Driveways
- Bobcat and Tipper Hire

QBCC: 66649

MICK : 0417 745 770

Painter

Shane Nolan Painting & Decorating

Keeping the Hinterland Beautiful

All Aspects of Painting

Interior Exterior - New & Old

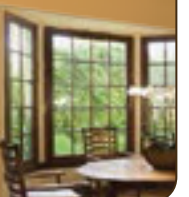
- Repaints • Restoration
- Destructive Features
- Wall Papering

0403 245 109

FREE QUOTES

shanenolan66@gmail.com

BSA 1016510



Cast a wide net in your local Gazette ...

SOCIAL media is great but in order to reach new customers in a local audience you need to cast a wide net.

Advertise in Look Local Trades & Services & reach 20,000 local readers a fortnight. Phone Tanya on 0400 069 711 for more information.

- TREES & STUMPS REMOVED
- HOUSE & SHED SITES
- UNDERGROWTH & LANTANA CLEARED
- FARM ROADS
- HORSE ARENAS
- AND MUCH MORE!
- STEEP SLOPES OK



JOHN : 0455 916 231

Palmwoods Hotel est. 1912

EXPERIENCE THE LEGEND



NEW BOTTLE SHOP NOW OPEN
FOREST GLEN CELLARS - LOCATED AT THE NEW IGA
5 VILLAGE CENTRE WAY. OPEN FROM 9AM.



SATURDAY 4 MARCH | 8:30PM - LATE

RUMORS

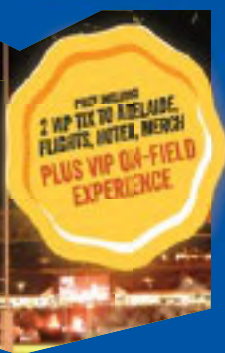


THE AUSTRALIAN FLEETWOOD MAC EXPERIENCE

SATURDAY 18 MARCH
9PM - LATE
FREE ENTRY

28-34 MAIN STREET PALMWOODS | BOOKINGS ESSENTIAL | 1300 PALMWOODS | WWW.PALMWOODSHOTEL.COM.AU |

WIN A STATE OF ORIGIN TRIP OF A LIFETIME



\$44.99 EACH

BUNDEBERG UP RUM 700ML

SPEND \$40 ON ANY BUNDEBERG RUM PRODUCT AND ENTER AT WWW.BOTTLEMART.COM.AU FOR YOUR CHANCE TO WIN. TERMS AND CONDITIONS APPLY. SEE WEBSITE FOR DETAILS.

START AT

Bottlemart

BOTTLEMART.COM.AU

NEW

XXXX GOLD
 24 X 375ML BOTTLES OR CANS

\$47.99 EACH

NEW

ULTRA SHOOT LAGER POWERS
 24 X 330ML BOTTLES

\$48.99 EACH

GREAT NORTHERN SUPER CRISP
 24 X 330ML BOTTLES OR 375ML CANS

\$53.99 EACH

30 PACK

HAHN SUPER DRY 3.5%
 30 X 375ML CANS

\$56.99 EACH

WIN A PAIR OF JBL HEADPHONES
 SPEND \$25 OR MORE ON ANY JIM BEAM PRODUCT FOR YOUR CHANCE TO WIN
 TERMS AND CONDITIONS APPLY. SEE WEBSITE FOR DETAILS.



1 LITRE
\$59.99 EACH
 EQUATES TO \$41.99 PER 700ML

JIM BEAM WHITE LABEL BOURBON 1 LITRE

JIM BEAM BOURBON & COLA
 10 X 375ML CANS

\$42.99 EACH

JIM BEAM WHITE & COLA VARIETIES 4.8%
 10 X 375ML CANS

BUNDEBERG UP RUM & COLA VARIETIES 4.6%
 10 X 375ML CANS

\$46.99 EACH

SAVE \$8

ANY 2 FOR \$20

UPSIDE DOWN WINES 750ML

ORGANIC

\$19.99 EACH

PAXTON THE POLLINATOR ORGANIC SHIRAZ, CROSER SPARKLING NV, JIM BARRY THE COVER DRIVE CABERNET SAUVIGNON OR ROBERT OATLEY SIGNATURE SERIES WINES 750ML

\$7.99 EACH

JACOBS CREEK CLASSIC WINES 750ML

\$8.99 EACH

JACOBS CREEK SPARKLING NV WINES 750ML

WIN A VIP EXPERIENCE TO THE FIFA WOMEN'S WORLD CUP™ FINAL
 PURCHASE ANY 2 BOTTLES OF JACOB'S CREEK 750ML TO ENTER
 TERMS AND CONDITIONS APPLY. SEE WEBSITE FOR DETAILS.

BEERWAH CELLARS - BEERWAH
 SHOP 11, BEERWAH MARKETPLACE PEACHESTER RD TEL 5494 0477

BEERWAH DRIVE THRU - BEERWAH
 MAWHINNEY STREET TEL 5494 0555
GLASS HOUSE CELLARS - GLASS HOUSE MOUNTAIN
 SHOP 5, 9 BRUCE PARADE TEL 5493 0188

FOREST GLEN CELLARS - FOREST GLEN
 TENANCY 2, 5 VILLAGE CENTRE WAY, TEL 5406 2015
MOOLOOLAH CELLARS - MOOLOOLAH
 SHOP 3, 2 JONES STREET TEL 5494 7320

PALMWOODS CELLARS - PALMWOODS
 SHOP 5, 18-20 MARGARET STREET TEL 5445 9266
PALMWOODS DRIVE THRU - PALMWOODS
 28 MAIN STREET TEL 5445 9003



All specials available from Wednesday 1st March until Tuesday 14th March 2023. Images are for illustrative purposes only. Specials available only in the state of Queensland. Prices may vary in country and far North Queensland. Different pack sizes and variants may not be available in all stores. Bottlemart supports the responsible service of alcohol.

FOR SALE	SOUTHSIDE	FOR SALE	NAMBOUR	FOR SALE	SOUTHSIDE	FOR SALE	NAMBOUR	FOR SALE	NAMBOUR
4 MINERS PLACE	35/50 ASPLAND STREET	19 JOHNSTONE ROAD	20/14 BADE STREET	33 EXPECTATION CIRCUIT					
4 2 4	3 2 2 TOWNHOUSE	4 2 8	3 2 2 TOWNHOUSE	4 2 2					
Warren Nonmus: 0431 210 348	Andy Sharma: 0410 989 177	Warren Nonmus: 0431 210 348	Andy Sharma: 0410 989 177	Andy Sharma: 0410 989 177					

Blackall Terrace Dental

N A M B O U R

New patient welcome offer

TOTAL: \$199 or NO-GAP!

Call to book or go online
(07) 5441 3583
blackallterrace.com.au

- Comprehensive exam
- Oral cancer screening
- Intraoral photography
- All necessary x-rays
- Scaling & polishing
- Topical fluoride
- Treatment planning

Scan to book your next visit.

ACCREDITED
HICAPS
4D
HCF PREFERRED PROVIDERS

*New patients only. T&Cs available online. Valid to 30.03.23.

ROVER RIDE ON MOWERS

HUMM90 & ZIP PAY 60 MONTHS INTEREST FREE
NO DEPOSIT ON ALL ROVER RIDE ON MOWERS

FREE LOCAL DELIVERY • COMPLEMENTARY 4 LITRES OIL (2 LITRES "RIDER MODELS") FOR 1ST SERVICES

<p>RIDER</p> <p>24" ROVER MICRO RIDER \$2,999</p> <p>30" MINI RIDER 6 SPEED MANUAL \$3,299</p> <p>30" MINI RIDER HYDRO \$3,799</p>	<p>RAIDER</p> <p>38" ROVER RAIDER RRP-\$3,999 \$3,799</p> <p>RANCHER</p> <p>38" ROVER RANCHER AUTODRIVE RRP-\$4,099 \$3,999</p>	<p>RANCHER</p> <p>42" ROVER RANCHER HAND HYDRO RRP-\$4,499 \$4,199</p> <p>LAWNKING</p> <p>42" ROVER LAWNKING KAWASAKI ENGINE 18HP RRP-\$5,299 \$4,999</p> <p>42" ROVER LAWN KING KAWASAKI ENGINE 21HP AUTO DIFF LOCK RRP-\$6,099 \$5,899</p>	<p>ZERO TURN</p> <p>42" ROVER RZ42 ZERO TURN RRP-\$6,999 \$6,299</p> <p>46" ROVER RZ46 ZERO TURN RRP-\$7,999 \$7,299</p>
--	---	---	---

Cub Cadet CUB CADET RIDE ON MOWERS

HUMM90 & ZIP PAY 60 MONTHS INTEREST FREE
NO DEPOSIT ON ALL CUB CADET RIDE ON MOWERS

FREE LOCAL DELIVERY • COMPLEMENTARY 4 LITRES CUB CADET OIL FOR 1ST SERVICES

<p>ELECTRIC CUB CADET RIDE ON MOWERS</p> <p style="font-size: x-small;">BOTH WITH 6 YEAR WARRANTY INC BATTERIES.</p> <p>CC 30 E RRP-\$6,499 \$6,299</p> <p>LT 42 E RRP-\$9,999 \$9,499</p>	<p>NEW ZTS1</p> <p>42" FABRICATED DECK RRP-\$8,799 \$8,399</p> <p>46" FABRICATED DECK RRP-\$9,499 \$8,999</p> <p>Z FORCE</p> <p>48" FABRICATED DECK RRP-\$13,799 \$12,599</p> <p>54" FABRICATED DECK RRP-\$13,999 \$12,999</p>	<p>NEW 42" & 46" TRACTORS</p> <p>XT1 42 RRP-\$4,999 \$4,499</p> <p>LX42 XT1 KAWASAKI 24 HP V TWIN RRP-\$6,999 \$6,699</p> <p>LX42 XT2 FUEL INJECTION ENGINE AUTO DIFF LOCK FREE POLY TRAILER RRP-\$6,999 \$6,999</p> <p>LX46 679CC AUTO DIFF LOCK RRP-\$7,399 \$6,999</p>	<p>PRO Z</p> <p>PRO Z 1485 RRP-\$16,399 \$15,299</p> <p>PRO Z 1545 RRP-\$16,899 \$15,799</p> <p>PRO Z 5605 RRP-\$24,599 \$22,999</p> <p>PRO Z 760 RRP-\$26,999 \$25,499</p> <p>972 SD DUAL WHEELER RRP-\$33,999 \$29,999</p> <p>972 SDL DUAL WHEELER RRP-\$35,999 \$32,999</p> <p style="font-size: x-small;">BEACON BUT NO LIGHTS SELF LEVELLING SEAT</p>
---	--	--	---

North Coast MOWER CENTRE

Ph: 07 5441 5455 | 36 Coronation Ave, Nambour

www.northcoastmowercentre.com

Mon - Fri: 8am - 5pm

Sat: 8am - 12pm