



Honours for beloved Montville GP: Page 4



'Fabric Cartel' corners the market: Page 6



Lighting & art initiative: Page 9



Nambour Show Wrap: Page 18



It's high time to Eat, Play & Stay in the Sunshine Coast Hinterland Gateway

Story Page 9

33,000 through the gates:

'Biggest Show in 25 years'

THE 117th Sunshine Coast Agricultural Show was the biggest in decades and, according to Show Society President Rowan O'Hara, it was the best yet.

With its mix of agriculture, tradition, new-age entertainment and perfect weather the event drew 33,000 people through the gates.

"It was an amazing show," said Mr O'Hara. "I mean, we can say that every year, but I do believe that we are making it better and better every year. We had the biggest crowds in at least 25 years."

"This year we had 33,000 people through the gate. So it's definitely exciting. We are growing year on year - with a lot of work."

"We had a really good spread of entertainment. There's been a few dramas, but our biggest dramas occur because we're getting bigger every year."

"And I will say we had a number of people this year from all over Australia. I had people come up from South Australia, say they'd heard

► Continued page 18. Pictures page 18

WOOMBYE VETERINARY SURGERY
VET
 5442 2000
 Dr Charlotte Ashton-Heinius B.V.Sc.
 23 Blackall Street Woombye

SUNSHINE STEERING
 Straight up front.
 RTA No. AU49451
David & Tina Ledger P 5478 8020 F 5478 8850
 Power Steering • Suspension • Wheel Alignments
 Child Restraints • Roadworthy Inspections
 Tyre & Balancing • All Mechanical Service & Repairs
 Air Conditioning • All Brake Repairs
 We also sell nuts, bolts and tyres.
 4/27 Main St, Palmwoods, Qld 4555

Sunstate Gearbox & Diff Service
 Specialising in:
 • Manuals • Differentials
 • Automatics • Tailshafts
 • Transercases • Clutches
OBLIGATION FREE APPRAISAL
 5 Charles Court, Kunda Park
Ph: (07) 5476 8911
 www.sunstategearbox.com.au

Wax Removal
 Hearing Assessments
 Tinnitus Management
 Hearing Aids
Sunshine Coast Audiology
 Call 07 5378 2226
 Emryn Maclachlan
 Anita Burgess
 Shop 10, 1 Scholars Drive, Sippy Downs
 www.sunshinecoastaudiology.com.au

BUY • RENT • SELL
With Nambour's #1 Agency

50 Lowe Street, Nambour | **RE/MAX** Property Sales & Rentals | outstandingagents@remax.com.au | Connect with us! | 07 5470 7000

AGENCY OF THE YEAR
 ratemyagent
agent of the year awards
 SUBURB WINNER 2023

SUNSHINE VALLEY Gazette

Editorial
If it matters to you, it matters to us. Send your news to Cameron Outridge 0409 424 487 editor@sunshinevalleygazette.com.au

Advertising
To advertise contact Tanya Outridge 0400 069 711 tanya@sunshinevalleygazette.com.au

Designer
Katie Buckley: katiebuckley@live.com

Distribution
10,000 copies are distributed to popular pick-up points throughout the hinterland including at Palmwoods, Woombye, Nambour, Chevallum, Eudlo, Mooloolah, Hunchy, Yandina, Maleny, Montville, Flaxton, Mapleton and Forest Glen.

Gazette in Print, Email, Online & Facebook
The Gazette is Printed Fortnightly & Online Always. A pdf form of the printed paper can be found on our website. Stories are also posted on Facebook, on our blog and via email to our subscribers.

Editorial Policy
Every endeavour is made to publish submissions but we can never guarantee that any article will definitely appear. We prioritise constructive news which strengthens the community fabric. Our broad aims are to:
• Connect the Community.
• Acknowledge Achievement.
• Back Business.
We encourage respectful & constructive debate on local issues in our letters section.

Thanks to our Advertisers
The Gazette is completely funded by our advertisers who make community journalism possible. Without them, there would be no paper. Please support them and let them know you found them in the Gazette.



Mapleton Country Market

LOOKING for a lovely day out in the hinterland? Then drop by the Mapleton Country Market on Saturday 24th June from 8am to noon. Mapleton Country Market features some amazing locally grown produce, home-made items and delicious food for sale.

The Market is at Mapleton State School, 24 Flaxton Drive, Mapleton.

Promote your business in multiple ways, over a year

DO you run a great business but wish more people knew exactly what you could do for them? Would you like to connect with more local customers? Not cutting through on social? The brand new Nambour & Hinterland Business Directory is a magazine of stories about local businesses. It will help promote your business to a local audience through multiple channels over 12 months.

Advertise with us, and you'll get a story and photo in the Directory and also in the Sunshine Valley Gazette at a time of your choosing. It will also appear on our Facebook page. It will be blasted to our 1918 subscribers via email. Plus we'll post your story and photos on the Gazette website.

To reserve a spot, go to www.SVGazette.com.au/nambour-business-directory or email tanya@SVGazette.com.au



Social Worker Jude Venn, Business Manager Melanie Bruhn, Nurse Analisa Chikara and Clinical & Operations Officer Melissa West.

Cittamani Hospice seeks donations for palliative care

by Janine Hill

CITTAMANI Hospice Service has put out a call for donations so that it can continue to provide vital support to Sunshine Coast residents requiring palliative care.

Cittamani writes twice a year seeking help from the local community, many of whom have had family members who have been assisted by the service at the end of their lives.

Business manager Melanie Bruhn said Cittamani supports about 220 families a year in providing in-home care for loved ones nearing the end of their lives.

Ms Bruhn said the service cost more than \$1.5 million a year to run.

She said the not-for-profit charity receives funding to the tune of about 65% from Queensland Health but needs donations to make up the balance of its budget.

"We're very grateful to have Queensland

Health support but we rely on the community and donations," she said.

"We provide 24/7 support. We have specialist palliative care nurses who visit patients in their homes as well as social work and bereavement support to patients and families.

"We offer free loan of equipment such as wheelchairs, commodes and shower chairs.

Ms Bruhn said caring for people at the end of their lives was a wonderful thing for the community to do.

She said the family and friends of people who had been supported by Cittamani were often willing to show their gratitude in the form of donations.

Cittamani writes to subscribers every June and December inviting them to consider giving.

► If you would like to donate, go to www.cittamanihospice.com.au or phone 5445 0822.

WHITE'S IGA

Where community and great food comes together

Every White's IGA store is stocked to meet the needs of our community. With locally sourced food that nourishes the body and an assortment of options to suit every shopper, our stores are made for you.

We invite you to browse the aisles, explore the products and chat to our team of local foodies - we'd love to see you.

"We want you to feel welcome every single time you step through the door. That means we pay attention to the little things. Your favourite products on the shelves, a friendly smile at check out, and the best possible prices - our team is here to help."

Roz & Michael White



MEGA MEAT SALE

WEDNESDAY 21ST JUNE - TUESDAY 27TH JUNE

<p>\$35 kg Hot PRICE! SAVE \$20.99</p> <p>AUSTRALIAN EYE FILLET STEAK</p>	<p>\$14 kg SAVE \$8.99</p> <p>AUSTRALIAN PORK TENDERLOIN</p>
<p>\$20 kg SAVE \$15.99</p> <p>AUSTRALIAN ECONOMY BEEF RIB FILLET STEAK</p>	<p>\$15 kg SAVE \$14.99</p> <p>AUSTRALIAN LAMB LOIN CHOPS</p>
<p>\$27 kg</p> <p>AUSTRALIAN BEEF T-BONE STEAK</p>	<p>\$11.90 kg</p> <p>AUSTRALIAN REGULAR BEEF MINCE (1KG MIN)</p>

On sale Wednesday 21st June until Tuesday 27th June 2023
Pictures used for illustration purposes only. Savings are off regular prices. While stocks last. We reserve the right to limit purchases to reasonable quantities. We reserve the right to correct printing errors.

WE CHECKED THE REGULAR PRICE, WE MATCHED THE LOWEST, YOU WON'T PAY MORE

LOOK OUT FOR ME!



Pictured at the Shack's 21st Birthday celebrations are Steven Gordon, Donna Dowler, Dale Dowler, Joel Dowler & Imogene Dowler ... "After 19 years, we're stronger and more passionate than ever". Steven is Imogene's fiancé.

The Shack celebrates 21 years

'We aren't slowing down. It's wonderful': Dale Dowler

by Janine Hill

PASTOR Dale Dowler sometimes finds it hard to believe it The Shack community centre has been around for 21 years. And sometimes not.

"There's been times when we've been at risk of closing down and of course the wonderful community kept us afloat," Pastor Dowler said.

"There have been times when I've thought, 'Where did those 21 years go?' and I look in the mirror and that soon tells me – you can put that in."

It was Pastor Dowler who identified a need for a drop-in centre in Nambour to help the homeless and disadvantaged youths.

"I was up at the Nambour Assembly of God church doing some pastoring up there and getting up at different hours of the night and would often go down town and talk to people, just casually," he said.

"I went back to our senior pastor and said,

'This is what I need, this is what I'd like to do.'

"A small number of our church congregation members and some other people funded it and some young people we had met helped clean it up," he said.

The Shack was initially in Howard Street but later relocated to the old Nambour squash club premises on Price Street where it remains.

People who had benefitted from The Shack's services were among those who spoke at a celebration on 3 June which Pastor Dowler described as a celebration of the community which has supported The Shack for 21 years.

"We're now looking forward to our 25 years," he said. "I'm getting a bit long in the tooth. Next year will be my 60th birthday and we're talking about what we're going to do in the next four to five years."

"We aren't slowing down. The needs aren't slowing down. Our community isn't slowing down. It's wonderful."



Classic biker's weekend breaks records

THE 2023 Ballards Offroad Conondale Classic Weekend broke event records with a sold-out crowd of 500 riders and over 5000 attendees. The event featured 1800 vintage dirt bikes on display, captivating enthusiasts with iconic brands.

The non-competitive riding sessions allowed riders to freely explore the tracks, resulting in a smooth experience with minimal wait times. The event showcased five exhilarating tracks and over 20 kilometers of trails along Elaman Creek, providing non-stop action for riders. The Shannons Show and Shine displayed over 90 immaculately restored bikes, demonstrating the passion and craftsmanship of bike enthusiasts. Winners were awarded trophies for their exceptional work, further elevating the event's prestige. The Classic Weekend Village

was abuzz with fantastic sponsors, offering various attractions and services to enhance the experience.

The Conondale Classic Weekend serves as the Sunshine Coast Motor Cycle Club's flagship event, with proceeds contributing to venue maintenance and community riding events. The partnership with Conondale P&C benefits the local school, and the event's success extends to other local businesses and regional tourism.

The SCMCC thanks the supporting sponsors who played a vital role in making the event a success. Riders and spectators are encouraged to mark their calendars for the next Conondale Classic Weekend on 7-9 June 2024. Stay updated by following the Sunshine Coast Motor Cycle Club - SCMCC on Facebook and Instagram.



The Denture Care Group

Sunshine Coast

Caloundra | Maleny | Woombye



BEFORE



AFTER

MAKE THE MOST OF YOUR HEALTH FUND THIS YEAR CONTACT US TO FIND OUT HOW

Book a Consult with us this month so we can help you get the most out of your benefits and have you leave smiling.



Aaron Pryor

P 07 5442 1721

HINTERLAND VIEW DENTAL 6 Hill Street, Woombye

denturecaregroup@gmail.com



DO YOU VALUE YOUR TEETH?

Healthy Teeth, Healthy Smile

At Hinterland View Dental we will look after you.

- Locally Owned and Operated
- Experienced and Friendly Staff
- Serene Environment

30% OFF

All Check Ups and Cleans

Complementary Orthodontic and Cosmetic Consultations



www.hinterlandviewdental.com.au

6 Hill St, Woombye
(opposite the Woombye Bowls Club)

Call 5442 2378



Hinterland View
— D E N T A L —

Saving lives and preserving nature: Residents receive King's Birthday honours

A specialist in para-medicine and a conservationist are among a selection of hinterland residents recognised in the King's Birthday 2023 Honours List.

Hinterland residents were appointed Members of the Order (AM) in the General Division, including Woombye's William Lord and Barry Traill from Maleny.

Dr Lord was recognised for significant service to para-medicine, particularly research and education.



William Lord of Woombye

He has been a director at the Australasian College of Paramedicine since 2000 and has held various positions with multiple ambulance and paramedic services.

He has also held positions within the education department and at universities, including at the University of the Sunshine Coast, where he was Associate Professor and Discipline Lead, Paramedic Science Program, from 2012-19.

Mr Traill was recognised for significant service to conservation and the environment in a range of roles.

He was the founding Australian director of Pew Charitable Trusts from 2007-20 and founder and president of the Invasive Species Council from 2002-07.

Mr Traill also advocated for conservation as the director of Solutions for Climate, a project of Climate Action Network Australia, since 2020; and he was involved in campaigns for Box-Ironbark parks and Victorian forests protection.

He was also the founder of the Northern Australia Environment Alliance, the Outback Alliance and Landholders for Dingos.

Palmwoods' Judith Bandidt was recognised with the Medal of the Order of Australia (OAM) in the General Division for service to the community of Goomeri.

The late Michael Simpson, formerly of Montville, received the Medal of the Order of Australia (OAM) for service to the community of Montville.

Honours for Montville's beloved GP

Posthumous OAM for Dr Michael Simpson

by Cate Patterson
of the Montville History Group

MONTVILLE lost its larrikin GP, muso, gardener and good friend on Australia Day this year, but it is fitting that he has been posthumously awarded an OAM, a Medal of the Order of Australia, in this year's Kings Birthday Honours.

Michael's award is for service to the community of Montville. For 30 years he worked in the community to preserve its history, provide quality health care, and bring joy through his music, love of cars and gardens.

Michael's community service included medical service across the Blackall Range, membership of the Montville State School Parents and Citizens Association, membership of the Montville Village Association, membership of the Simpson Brothers Band, organist for the Montville Uniting Church, membership of the Blackall Range Horseless Carriage Club and membership of a number of heritage gardening clubs.

He was a General Practitioner on the Blackall Range for over 30 years, where his view of the role of a small community GP included home visits to patients with mobility issues and bulk billing. He saw visiting patients at home as helping with both the diagnosis and subsequent care he could provide while he strongly believed that everyone should have equal access to primary health care.

Michael's three children attended Montville State School and Michael was an active member of Montville School's P&C for over a decade, helping organise the annual Ball, the May Fair and the end-of-year graduation and Christmas celebrations.

In the early 2000s, Michael joined the



GP and community champion Michael Simpson, inset, and with his wife Kyleigh in their beloved garden at "The Shambles" in Montville.

Montville Village Association, becoming Vice President in 2005. In this role he oversaw much needed restoration work on the Montville Village Hall and developed a maintenance plan for this historic building. This led him to prepare a successful submission to have a number of historic buildings around the Montville Village Green listed as heritage protected buildings, resulting in the whole 'Village Green Precinct' being listed.

The Simpson Brothers Band has been a Montville institution for over twenty years. Its irreverent blend of folk, country, rock, jazz has entertained at Australia Day celebrations, community events, dances and concerts. During Covid, the band offered street, 'busking-type' performances in Main Street to lift community spirits.

Although not a member of the Uniting Church, when its long-time organist left, Michael, as an accomplished organist, volunteered to take on this role albeit with only four working fingers.

As a foundation member of the Blackall Range Horseless Carriage Club, Michael worked to establish it in the community. Along with the Simpson Brothers Band, the Club supported Montville's Australia Day Celebrations with a display of 'horseless carriages'.

Michael's involvement in heritage gardens had a twofold benefit for Montville. Not only did it raise an awareness of the need to preserve the gardens of the early European settlers, through participating in the Open Gardens program, he raised many thousands of dollars primarily for local charities and not-for-profit organisations.

Michael was made a life member of the Blackall Range Horseless Carriage Club, and was awarded Montville Citizen of the Year in 2007 and a Montville Lifetime Citizen Award in 2022. He would have been bemused at being awarded an OAM because he believed service was just part of being a member of a community. We are proud of the recognition bestowed on Dr Michael Simpson OAM.

PROTECT YOUR OUTDOOR AREA FOR ALL SEASONS

NEW SHOWROOM OPEN NOW

Keep out the weather and extend your living space.

Our blinds are retractable when not needed and are available in colours and styles to compliment your exterior scheme.

Available with spring, crank or motorised operation, they are hard wearing, and made to withstand our tough conditions.

Ours is a well established local family business with the experience to advise and install.

Our quality products are made to last.

Local Hinterland Company

Call us for an on-site measure and quote. Our experts will give you the right advice about the best product for your project.

Shop 5/46-50 Hospital Road, Nambour

5441 6000

www.customcurtains.com.au



CUSTOM Curtains and Shade

Blinds • Awnings • Curtains • Shutters • Security • Wallpaper

Proudly serving the Sunshine Coast for over 16 yrs



DentalExcel

WE'RE HERE FOR YOU!



NOW OPEN FOR ALL PROCEDURES

In line with Stage 1 restrictions, we look forward to welcoming you back for ALL of your dental needs.

COVID-19 Screening measures in place to ensure safety.

Dental Excel is grateful for the dedication of our staff who have been there for your emergency treatments throughout this crisis. We are still here for you and still adhering to strict hygiene precautions to keep you and us safe.

Dental Excel is proud to be a part of the MARLEY DENTAL GROUP



DentalExcel

Bulk Billing Medicare Child

Dental Benefit Scheme for Eligible 2-17 yrs

- Family Dentistry • General Dentistry • Cosmetic Enhancements • Zoom® Teeth Whitening
- Veneers • Crown and Bridge • White Fillings • Preventative Dentistry • Children's Care
- Gum Disease Maintenance • Dentures and Veterans Affairs • Dental Implants



Payment plans available - no interest ever

Open Monday to Saturday • Early and Late Appointments afterpay zip money

Ph: 5445 0166 2-4 Margaret Street, Palmwoods www.dentalexcel.com.au



Federal Member for Fisher Andrew Wallace tables the petition.

‘Montville needs a doctor’: Fisher MP tables petition

FEDERAL Member for Fisher Andrew Wallace has tabled a petition calling for the Federal Government to improve rural and regional incentives to address GP shortages in Montville.

The petition of 775 signatures was presented in parliament.

It comes in the wake of the Medical Centre in Montville being closed since January 16 due to an inability to attract a doctor.

Mr Wallace said Montville did not receive MM5 category rural funding, which would make all the difference in attracting doctors.

By comparison Maleny attracted doctors because of the way doctors were funded through the ‘Modified Monash Model’.

“There is a discrepancy between the income a doctor would earn in Montville which is less than what a doctor would earn in Maleny,” Mr Wallace said.

“Montville misses out by only hundreds of metres, a line on a map, from being able to have appropriate funding for a doctor to work in their town.

“I’m calling on Health Minister Mark Butler, as are those 775 petitioners, to make an exemption and make it at least on par with Maleny to make it more financially rewarding for a doctor to work in Montville.”

Montville has a high proportion of seniors – the age group that has the highest rate to

see a GP. Without a doctor service, Montville residents must drive along steep roads on all exits of the town, including the aptly named Razorback Road.

Knock-on effects for local businesses

“It’s not just the people of Montville that need a doctor. It’s the businesses like the Montville Pharmacy, which runs the risk of having to shut down if Montville doesn’t have a doctor,” Mr Wallace said.

“And if people have to travel to Nambour or Maleny for a medical appointment, it becomes a day trip and they’ll do their shopping or seek other services while they wait for their appointments.”

Mr Wallace said the town truly misses the services of Dr Michael Simpson OAM, who was this week posthumously recognised in the Kings Birthday Honours.

“I want to pay tribute to the Late Dr Michael Simpson, whose OAM for service to the community of Montville acknowledges his tireless work in the community and as a GP in the local area,” Mr Wallace said.

“Since Dr Michael’s passing, Montville has struggled to maintain a GP service. And now there is none.

“Both State and Federal Labor Government have the right levers to pull to give rural communities like Montville the health services they deserve.”

18-Piece Big Band Concert at Palmwoods

THE Scream Jazz Orchestra is a traditional 18-piece Big Band that plays a variety of swing era and jazz music as well as more contemporary numbers.

The Band will play a concert at Palmwoods Memorial Hall on Sunday July 23 from 2pm.

The Band mostly consists of Retired Servicemen who have served in various arms of the Defence Force are now professional, semi-professional and teachers who chose to get together

on the Sunshine Coast to form this band.

Scream has performed at the Noosa Jazz Festival and has backed artists including Jackie Cooper, John Morrison, Bobby Valentine and Grace Knight to name a few.

► The concert offers a chance to dance or just enjoy the music. Cost \$30. This is a major musical event on the Coast. Further information: screambigband@gmail.com or 0434 675 529.

ASPHALT & BASE CONSTRUCTION CALL JOSEPH 07 5478 9834 | 0402 932 159

38 YEARS EXPERIENCE **FREE QUOTES**

RED BROWN & BLACK ASPHALT | MACHINE & HAND LAID HOTMIX ASPHALT

- CAR PARKS
- TENNIS COURTS
- PRIVATE ROADS
- SALES YARDS & DISPLAY AREAS
- FOOTPATHS, KERBS
- SPEED HUMPS
- DRIVEWAYS
- GRAVEL ROAD
- MODERN, STYLISH EDGING
- CRACK SEALING
- EXCAVATIONS & DRAINAGE

www.asphaltbaseconstruction.com.au

ELITE FOOT CARE
Podiatry • Orthotics • Footwear

Online Bookings Available

Call Elite Foot Care on **5328 3588** to book your appointment

For online bookings
www.elitefootcare.com.au

DO YOU HAVE FOOT AND LEG PAIN?

Call **5328 3588**

- Ingrown Nails
- Corns & Callus
- Heel Pain
- Achilles Pain
- Shin Splints
- Arthritis

- Knee & Hip Pain
- Lower Back Pain
- Kids Podiatry
- Diabetic Assessment

4/40 Wilson Avenue, Woombye
Corner of Blackall Street and Nambour Connection Road

OPEN HOURS: Mon-Fri 8:30am – 5pm www.elitefootcare.com.au

EXHIBITING NOW

EBONY BUSK

Self-taught artist living and painting on Gubbi Gubbi country.

Founder of LANTANA space, Moffat Beach, a shared art studio and exhibition space. Her work is poignant and honest. Ebony is drawn to expressing the subtleties of the human experience through the mediums of oil paint, charcoal, graphite and clay, and is deeply influenced by the great masters practises and techniques.

@ebonybusk_art

Yandina Art & Framing

Framing | Gallery | Art supplies



7 Stevens St Yandina, Q 4561 admin@yandinaartframing.com.au 07 5446 8000 Trading 6 Days : Mon - Fri 9:30 - 4 | Sat 9 - 2





Virginia Price in her new, quirkily named, Queen Street store. Her take on quilting was inspired by a visit to an Amish community.

Fabric Cartel owner corners the market in Queen St quilting

by Janine Hill

VIRGINIA Price is a rarity. In an era when independent fabric stores have mostly closed, she has decided to open one.

The Fabric Cartel is the newest addition to Nambour's Queen Street, which has become home to hair, fashion, food and creative arts businesses.

The Fabric Cartel stocks a wide range of quilting fabric and Ms Price hopes it will claim a niche by doing quilting differently.

"The idea behind the Fabric Cartel is to bring in young people who might think sewing and crafting is a granny thing," she said.

"I want it to be fun and for people to be creating and teaching. We all have something to give, even if we don't sew."

Ms Price's take on quilting was inspired

by a visit to an Amish community where she noticed the quilters deliberately made a mistake in each piece to recognise the imperfections in life and people.

"People telling you, 'You have to do it this way,' can be very intimidating, especially when you're trying to learn something, and I want to try and bridge that," she said.

"I want young people coming in and finding bright colours instead of the pretty pastels that most people expect."

The Fabric Cartel stocks fabrics by funky brands such as Tula Pink and Ruby Star Society which feature bright colours, bold graphics and big images.

Ms Price plans to put together kits and classes with a focus on smaller projects such as cases and pillow slips for people who are time poor and struggle to commit to big projects.



Pic: Jason Bull Photography

Winter Bowls Carnival features hinterland clubs

THE Sunshine Coast Winter Bowls Carnival, July 8 to 21, brings together bowlers from near and far.

The Carnival comprises 12 tournaments hosted by local clubs including the hinterland's Nambour, Yandina, Palmwoods and Woombye.

Over a thousand players will participate. It is open to bowlers of all levels.

"After a three-year break with Covid, we are thrilled to host the 2023 Sunshine Coast Winter Bowls Carnival," said Event Co-ordinator Barry Sullivan.

"Lawn bowls is a sport that unites people and brings joy to all who participate."

"We look forward to witnessing remarkable displays of talent, sportsmanship, and camaraderie throughout the tournament."

From singles and pairs to triples and fours, participants will have the chance to compete in their preferred format and have the opportunity to share in up to \$42,000 in prize money.

Registration is now open by visiting www.sunshinecoastlawnbowls.com.au.

Sunday arvo Bowls, Beers & Burgers at Woombye

LOOKING for something to do on a Sunday afternoon? Woombye Bowls Club is running a Burger, Beer and Bowls afternoon once a month on a Sunday afternoon. It started Sunday June 18.

Join them for a relaxing and enjoyable afternoon of barefoot bowls in the winter sunshine with a steak burger, beer/wine or soft drink. It's

\$10 for children aged 8-16 and \$20 for adults.

It's a social afternoon, so everyone is invited. Come barefoot or in thongs or flat-soled shoes. Bowls and instructions are both available on the day.

Bookings Essential so phone the club on 5294 5245.

ALLCOAST
TYRE SOLUTIONS

22 Coronation Ave
Nambour
(Opposite the RSL)

Ph: 07 5343 8344

OUR SERVICES

TYRE FITTING

Mowers, Car,
SUV & 4WD's

- Tyre Repairs
- Tyre Rotations
- Wheel Alignments

BATTERIES & WIPERS

www.allcoasttyres.com.au

GOOD YEAR
AUTOCARE *Good to go*

ASK US ABOUT
OUR BUY 3 GET THE
4TH **FREE** DEALS.

ONLY NEED 2 TYRES
GET **50% OFF** THE
SECOND TYRE*

Earthmoving • Cranes • Trucks • Hydraulics • Attachments

GR FLEET SERVICES
DIESEL MAINTENANCE & REPAIRS

We service and repair all makes of earthmoving machinery, cranes and trucks.

From Warranty Servicing to hydraulic hose repairs we have you covered.

FULLY EQUIPPED WORKSHOP + FIELD SERVICE

Authorised Dealers

169 Nicklin Road, Palmwoods • 5457 3066 • grfleet.com.au

Need legal advice about retirement living?

David Wise Solicitor

Specialist advice for residents and prospective residents of retirement villages, over 50's resorts, and manufactured home parks, including entry, exit, dispute resolution, Wills, Powers of Attorney and Estates.



0412 254 080 | principal@davidwisesolicitor.com.au
www.davidwisesolicitor.com.au

MEMBER Queensland Law Society.

SPAR



WOOMBYE

Market Specials



\$3.50
EA.

Mushrooms Cup or Sliced 200gm Punnet \$17.50 per kg



\$1.40
EA.

Hass Avocado



\$3.75
EA.

Brushed Potato 2Kg Bag \$1.88 per kg



\$4.50
KG.

Broccoli



\$2.50
EA.

Cherry Tomatoes 250gm Punnet \$10 per kg

LOW PRICES ALL DAY EVERY DAY



PAYLESS EVERYDAY
\$16 kg

Primo Virginian Ham



PAYLESS EVERYDAY
\$7.75 kg.

Primo Devon



PAYLESS EVERYDAY
\$14.50 kg.

Short Cut Bacon

SCAN TO SUBSCRIBE TO OUR LATEST WEEKLY CATALOGUE STRAIGHT TO YOUR INBOX!



Specials available Wednesday 21st June until Tuesday 27th June 2023

WOOMBYE

20 BLACKALL ST

OPEN 7 DAYS!

PH: 5413 8007



Specials available while stocks last. Limit rights reserved. We reserve the right to correct any printing errors and omissions.



Chad Daniels: "I want to make Heaven & Earth a destination on the Sunshine Coast and bring more people to Yandina".

Vision crystallises into spiritual destination

Business Writeup by Janine Hill

WHAT started as a side hustle for Chad Daniels has become a full-time business.

Mr Daniels is the owner of Heaven & Earth, a crystal shop in Yandina's newest shopping block on the main drag through town.

Prior to opening the shop in December, he worked in construction and sold crystals at markets and special events as a sideline.

"Mum is a very spiritual person and I've just always had a passion for it," Mr Daniels said. "When the pandemic hit and everything shut down, I had a chance to try something a little different."

Mr Daniels lives with his partner in Yandina and saw an opportunity to go one step further and open a store in town.

The shop sells more than 50 different types of crystals, ranging from the always popular clear quartz through to harder-to-find types, such as tektite and moldavite. He buys most of the crystals for the store direct from suppliers in Brazil who import them from all over the world.

"The feedback we get from customers is that our crystals are quite affordable, and that's because I buy direct," he said

While the crystals make up 95% of stock, there are also oracle cards, books, and Mr Daniels makes lamps and jewellery for sale.

Mr Daniels' hopes Heaven & Earth will not be just a place that people drop into, but a shop that customers visit intentionally.

"I want to make it a destination on the Sunshine Coast and bring more people to Yandina to experience the town," he said.

Lotto thoughts inspire agency swap

AFTER 11 years behind the counter, NewsXPRESS Yandina's Keith Harm handed over the reins to Maddie O'Leary on June 5.

Locals will know Maddie from *Champagne Lou Lou*, the business she has operated from Stevens Street for many years.

"I have always wanted to run a successful business and Champagne Lou Lou has been a wonderful way to get my toes wet," Maddie said. "It has given me a pretty solid understanding of merchandising and I think I had arrived at a point where I had learned enough to move on to the next place."

Ironically, it was while she was watching the \$40 million Lotto Superdraw that Maddie had the notion to start thinking about another business.

"I said to my friend, 'OK, if I win \$40 million tonight, what am I going to spend it on?'" she laughed.

"Then I started to look for businesses for sale in Yandina and this one came up. The people at Lotto love this story!"

Keith had moved the business to its current location in Farrell Street, after trading from Steven Street for nine and a half years.

"I am so grateful that Keith had the foresight to make the move because I feel that the business is really perfectly positioned, for a newsagency," Maddie said.

"There is plenty of parking and we are right in a very busy section of town. The shop itself is so fresh and light and the aspect is really fabulous."



It was a \$40 million Lotto Superdraw that sparked the idea of a business change for Maddie O'Leary. Now she owns the local newsagency.

Maddie hit the ground running in the new venture and now feels confidently up to speed.

"I haven't really stopped and I am really fortunate to have some great support around me to help me get going," she said.

"Now I can start to dabble and bring in new stock."

Maddie plans to bring in some of the clothing and accessories from Champagne Lou Lou, as well as silver jewellery, homewares and giftware.

"I think one of the things I am enjoying the most about this business is the variety of people I am interacting with now," Maddie said.

"Every day I am dealing with people aged between 1 and 100, from all walks of life. I am meeting new people in town all the time and it is exciting how rewarding this is proving to be."



Breakfast

Wednesday - Sunday
8:00am - 11:00am

Casual Garden Menu

Wednesday - Sunday
8:00am - 11:00am

Flaxton Feasts and Roasts

Wednesday - Sunday
12:00pm
Pre Order - Pre Pay

Tapas Bollinger Luxury High Tea

Wednesday - Sunday
10:00am
Pre Order - Pre Pay

Flaxton Gardens Voted 5th in Australia Reception Venues.

CALL NOW TO BOOK

07 5445 7450

313 Flaxton Drive, FLAXTON

flaxtongardens.com.au



NEW SEASONAL MENU

FROM 31ST OF MAY FOR WINTER | TWO COURSES 50PP

ON ARRIVAL

COMPLIMENTARY "AMUSE BOUCHE" and fresh baked bread

Please advise staff of any allergies or dietary requirements & the team will adapt our selection to suit

MAINS

FRESH TEMPURA MOOLOOLABA PRAWNS
with mango & macadamia salsa df

STICKY BRAISED WAGYU OXTAIL
with chorizo & truffle mash gf

MADRAS CURRIED ORGANIC VEGETABLES
with pappadum, sweet mango chutney & rice vg

CRISPY SKIN SALMON
with freshly made gnocchi & pumpkin puree

ROAST ORGANIC PERI PERI CHICKEN BREAST
with sweet potato, corn, greens & Maleny yoghurt gf

KIDS MENU AVAILABLE

DESSERTS

APPLE & RHUBARB CRUMBLE
with raspberry sorbet & Maleny dairy custard

CHEESE COB LOAF
with chutney & a selection of dried & fresh fruit

"SUNSHINE & SONS AFFOGATO" gf

CARAMELISED RUM & RAISIN BREAD & BUTTER PUDDING
with vanilla bean ice cream

'FLAXTON SPECIALITY' RASPBERRY SOUFFLE
with vanilla bean ice cream & raspberry coulis gf (df option available)

SPECIALTIES

GRILLED LOBSTER & SOUFFLE 95pp

Grilled whole lobster with cheesy sauce, served with sweet potato wedges & a fresh salad

followed by our

'FLAXTON SPECIALITY' RASPBERRY SOUFFLE
Includes a glass of FG Bubbly (Must be pre-ordered and prepaid)



One of the public art displays.



Lighting and art initiative unveiled to revitalise CBD

NAMBOUR'S iconic town centre will be shining more brightly thanks to new lighting and public art displays unveiled recently by Federal Member for Fairfax Ted O'Brien.

The Nambour Lights Up Project launched on 8 June at Tram Co as part of the Reimagine Nambour initiative to revitalise Nambour and kick start urban renewal of the CBD.

Federal Member for Fairfax Ted O'Brien joined with the Reimagine Nambour Committee, the Nambour Tramway Company and members of the community to celebrate the completion of the five new lighting installations and three public art pieces now on display around the town.

Mr O'Brien worked with local community leaders and former Sunshine Coast Councillor Greg Rogerson to help secure \$500,000 from the Federal Government in 2020 to drive the renewal of the historic town.

"Nambour is one of the unique places in Australia where the values

of the past and the opportunities of the future coexist," said Mr O'Brien.

"The new lighting will highlight some of the town's murals as well as historic areas like the Old Ambulance Centre.

"The new public art displays will complement the existing artwork depicting the history, character and personality of Nambour."

Former Councillor Greg Rogerson has seen Nambour through some years of challenge following the closure of the Moreton sugar mill in 2003. He has been one of the driving forces behind Reimagine Nambour to help attract more investment into the local economy.

"The Nambour community is proud of their distinct identity and we are looking forward to a bright future," said Mr Rogerson.

"This project is part of a 20-year plan to stimulate growth and investment, whilst also preserving Nambour's unique cultural and historical identity."



The team shot the latest video package at Dulong Lookout. The theme was Eat Stay and Play in the Sunshine Coast Hinterland Gateway. Image Millie Mae Pictures.

Video package showcases the delights of Nambour & hinterland

A video and branding package showcasing Nambour and hinterland's green surroundings, food, restaurants and cafes, live local music events and creative local art exhibitions will be launched today (June 21).

The initiative developed by "I Am Nambour" and "Nambour Groups" aims to captivate locals, and attract tourists and investors to the region.

Tourism body Visit Sunshine Coast supports Nambour as the "Gateway to the Sunshine Coast Hinterland". The sub-region includes Eudlo, Palmwoods, Woombye, Nambour, Diddillibah and Bli Bli.

Nambour Groups convenor Rhonda Billett said momentum was strong and private investment in the area was growing.

"Our region is flourishing and

with the assistance of our Nambour Groups' collaboration with Sunshine Coast Council we are telling the story of what all the noise and excitement is about in this region," she said.

"At the recent Sunshine Coast Infrastructure Summit held a few weeks ago, the Sunshine Coast Business Council identified things like 7-day trading and night time economies were options this region could benefit from for economic growth and further prosperity.

"Businesses locally are starting to embrace these concepts in the Gateway region and it puts our businesses in a good position for success.

"I feel we are really setting our region up well for the future, we have an airport within 15 minutes drive of this region, our foodie options are growing, there is so

much to see and do and our local boutique accommodation options are extremely popular and are booking out quickly.

"Eat Play and Stay felt like the right fit for the video production series.

"Locals, visitors and investors will be able to see the videos via the I Am Nambour web site, various Social Media pages and on the I Am Nambour YouTube Channel."

The package was to be launched from 8am today (June 21) in Nambour's Lowe St Town Square with Mayor Mark Jamieson and CEO Emma Thomas and councillors in attendance as well as members and guests of the Nambour Chamber of Commerce. The Chamber of Commerce said it wanted to leverage off the initiative and raise awareness of its region.

The PCB Ltd Directors & Staff of the Heritage Bank are proud to support Palmwoods Arts & Craft Group in their recent endeavours.

The Palmwoods Arts & Crafts group was established in 1992 initially having only 3 Members it has grown to over 80 Members – The Club plays a very important role in the local Community by not only imparting new skills in the arts & crafts field but by welcoming newcomers to the area and by extending a hand of friendship to all who attend. The motto of the Club is Endeavour, Companionship & Skill.

Palmwoods Community Bank

Continuing to support our Palmwoods Community

Palmwoods Community Branch Ltd
... proudly supporting our community ...

PCB Ltd, Palmwoods Community Branch Ltd, PO Box 92 Palmwoods, QLD, 4555 ACN 115370011
ABN 32 087 652 024, AFSL 240984, Australian Credit Licence 240984



FREEZE & HEAT MEALS



RangeCare[®]
BLACKALL RANGE CARE GROUP LTD

HOW TO ORDER

Call 07 5445 7044 OR order online via the link below:

www.rangecare.com.au/freeze-and-heat-meals.

Minimum of 5 meals and \$5 delivery fee applies to all orders.

*Delivered to your door
every Friday!*

MAIN MEALS - \$11.00 EACH

1. Roast garlic and rosemary crusted lamb - LG

Served with roasted vegetables and gravy.

2. Crispy skinned lemon and herb roast chicken - LG

Served with roasted vegetables and gravy.

3. Beef lasagne

Lean beef bolognese layered with bechamel, pasta and cheese.

4. Braised beef and bacon casserole - LG

Slow cooked steak and bacon in a rich beef gravy, served with herb buttered potatoes and seasonal vegetables.

5. Corned beef with fresh herb white sauce - LG

Served with steamed vegetables.

6. Cottage pie - LG

Lean beef and vegetables sauteed in gravy and baked. Served with creamy mash potatoes and seasonal vegetables.

7. Chinese sweet and sour pork - LG DF

Tender pork pieces in sweet and sour sauce with stir-fry vegetables, served with rice.

8. Mild Indian butter chicken - LG

Mildly spiced creamy tomato curry, served with basmati rice.

9. Satay vegetable curry - LG DF VEG

Sautèed chickpeas and vegetables in a creamy peanut coconut gravy, with sweet chilli and fresh ginger.

10. Winter vegetable and feta quiche - VEG

Savoury custard baked in filo pastry with roasted vegetables, fresh herbs and cheese.

11. Creamy garlic prawns - LG

Australian prawns marinated in garlic and fresh herbs, sauteed in butter, white wine and cream and finished with parmesan. Served with rice.

SOUPS - \$8.00 EACH

12. Cream of roasted sweet pumpkin soup - LG DF VEG

A wholesome soup of roasted sweet pumpkin, sweet potato, sauteed onion, celery, carrot and coconut cream.

LG = Low gluten

DF = Dairy free

VEG = Vegetarian

Scan the
code to
order online



WINTER SPECIALS

13. Curried beef sausages in coconut cream - LG DF

Beef sausages and vegetables braised in a mild creamy curry coconut sauce, served with rice.

\$11.00

14. Chicken cacciatore with fettuccine

Oven roasted chicken cutlet, slow cooked in red wine, tomato and gravy. Served on fettuccine with basil pesto and parmesan.

\$11.00

15. Country chicken, sweet corn and chunky vegetable soup - LG DF

Hearty chicken and vegetable broth seasoned with fresh herbs, preserved lemon, garlic and sweet corn.

\$8.00



07 5445 7044

www.rangecare.com.au



Bob and the Frog – acrylic artwork by Fiona Groom.

Animal Antics on show at Art on Yabba at Imbil

ART on Yabba in Imbil is hosting a solo exhibition by Ninderry artist Fiona Groom in July.

The *Animal Crackers* exhibition opens on Saturday July 1 at 4pm at Imbil's Wild Vine Café. The fine art gallery is at 116 Yabba Road, Imbil and opens from 9am-2pm Thursday-Sunday. In *Animal Crackers*, she shares a collection of animal portraits - a snapshot of the natural world.

New 40km speed zone to improve safety in Mapleton

THE Department of Transport and Main Roads (TMR) has installed 40km speed signs on Obi Obi Road, Mapleton.

The reduction was made to improve safety along the narrow bottleneck outside the Mapleton village shops and school zone.

The speed limit extends from the intersection at the Mapleton village shops and past the Mapleton State School.

Concerns had been raised by the community to the Mapleton and District Community Association (MADCA) since 2018.

Together with the TMR and Cr David Law, MADCA investigated the issues and worked at finding a way to improve safety.

In 2022, MADCA organised a petition to Queensland Parliament, which was successfully sponsored by local member Rob Skelton.

The petition requested that the present school zone with its speed limit of 40km/h be made a permanent 24/7 speed limit with the northern boundary of the zone, on Nambour-Mapleton Road, extended north to



include the K Intersection.

The reduction follows concerns raised by members of the public, after which TMR conducted speed limit reviews for two sections of the Nambour-Mapleton road.

Drivers are urged to be aware of the new signage and drive safely with due care and consideration for road conditions.

▶ See the MADCA website (madca.com.au/news/40km_speed_zone.html) for more information.

MADCA engages with community, focuses on quarry concerns

THE Mapleton and District Community Association Inc (MADCA) under President Max Standage is dedicated to supporting and empowering the local community.

Since its establishment in 1999, MADCA has worked with residents, community groups, and local government, prioritizing the preservation of the natural environment and the well-being of its residents.

This month MADCA has been conducting a survey, commissioned by grants officer Peter Hulme aimed at understanding the support needed by residents and monitoring community satisfaction. By actively seeking feedback, MADCA aims to better tailor its efforts to meet the evolving needs of the community effectively.

A significant issue that MADCA has been addressing is the concerns surrounding the Dulong and Image Flat quarries. In collaboration with the Hinterland Quarry Action Group (HQAG), MADCA is working to address health, safety, and environmental aspects related to the quarries. The HQAG has been leading the charge in promoting awareness and advocating for the well-being of the community, emphasising sustainable practices and responsible resource management.

MADCA is collaborating with local government entities, particularly the Sunshine Coast Regional Council. Div 10 Councillor David Law regularly attends meetings, showcasing the commitment of local government to engage

with the community and address its concerns.

The monthly general meetings of MADCA have experienced a surge in attendance, demonstrating increased engagement and interest among community members. MADCA's website, 'madca4560' Facebook page, and 'Mapleton' website serve as valuable platforms for disseminating information about initiatives and upcoming events.

▶ To participate in the survey, visit www.madca.com.au. As the survey progresses, MADCA will gather insights to shape future endeavours and amplify its positive impact on the community. To share community information please email: information@madca.com.au or enquiries@madca.com.au.

Your Local, Family-owned Optometrist since 1984

Call Us or Book Online
07 5441 2277



**WILSON FITZPATRICK
FAMILY OPTOMETRISTS**

A local & independent optometrist proudly serving the Sunshine Coast with individualised eye care and impeccable frame design since 1984.

Equipped with their own lens technician, your glasses are prepared on site with the utmost care.

- ✓ Exceptional Eyecare for the whole family
- ✓ Ethical & Professional Advice
- ✓ Glaucoma, Cataract, Macular Degeneration Assessments
- ✓ Most standard single vision lenses ready in 20 minutes!

40 Howard St, Nambour • fitzpatrickoptometrists.com.au



**MORNINGSTAR
DIGITAL**

**YOUR LOCAL
WEB DEVELOPER**

Mention this ad for a
locals discount

1300 392 542

lvl 1 / 65 Currie St, Nambour 4560

www.morningstardigital.com.au

RayWhite

Would you like to experience Ray White Nambour's Property Management services for Free!?

0% Management Fee!

for the first 3 months! (Offer expires 30 June 2023)

Contact our team and we can make it happen for you. *We will handle everything!*

- Your first 3 months FREE management (plus competitive fees ongoing)
- If you are transferring from another agency, we will handle the whole process for you
- Complimentary up to date rental appraisal to ensure you are maximising your return

Ray White Nambour

07 5354 6000 | rentals.nambour@raywhite.com

raywhitenambour.com.au

Pawfect match: Burnside High embraces Inu the therapy dog

A lifetime love of dogs has led to Burnside State High School's Senior Japanese Teacher, Kim Bexon, bringing that passion into the school environment in the form of the school's beloved therapy dog, Inu.

"I've always had dogs in my life, and I guess I've always been interested about the benefits of having a dog in a learning environment," explained Kim.

"I did my research before committing to buying another dog and the benefits for both myself, the students and the school seemed too good not to experience."

Kim bought Inu, the Border Collie, as a 7-week-old pup and began training him immediately. Inu could not be registered as a community therapy dog until he turned 1, and after a year and a half of training and an intensive 2 week course through Therapy Dogs Australia, Inu became a registered Community Therapy Dog, who has fast become a valued staff member at Burnside SHS.

"The presence of Inu in and out of the classroom, I think, enhances social interactions between myself and students and amongst students themselves," said Kim.

"It's so nice to hear students who aren't even in his classes, say good morning to him and come up for a pat and sometimes even chat about their own pets, as we walk around the school."

"I can also see that Inu encourages empathy and fosters a positive learning environment, because even the teachers walk through the staffroom just for a pat from Inu and our Principle, Kerri, often pays visits to the library for some cuddles."

According to Kim, Inu has also positively impacted the way students learn.

"I think that having a therapy dog facilitates



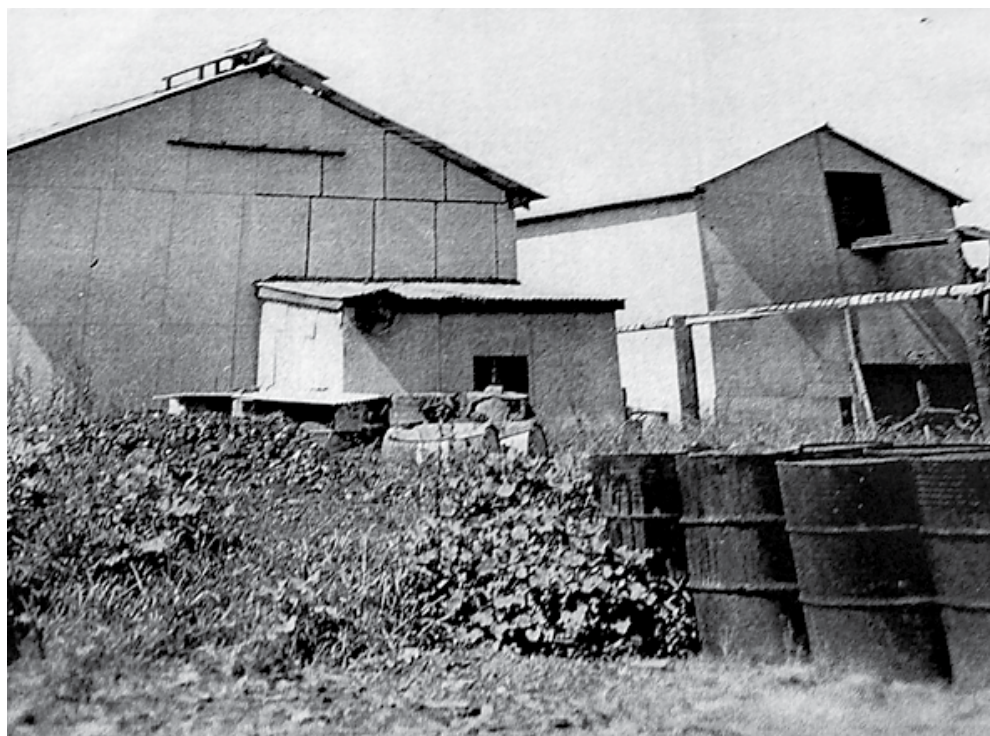
From left, Lucy MacDonald and Claudia Rose with Inu who has fast become a valued staff member at Burnside SHS.

improved concentration and motivation, which can ultimately boost academic performance, especially for anxious students."

Inu means 'dog' in Japanese, and all his commands are also in Japanese - so one of the first things students learn about him is that he understands a foreign language.

"So, students who want to communicate with him, in or out of Japanese class, ask him to 'shake', and simultaneously learn and use Japanese to do so," Kim said.

"I think this is such a great skill in developing their global competencies or soft skills for their future, like compassion, respect and curiosity."



Nambour's Wax Factory in the 1940s.

From cane by-product to war-era wax polish

From Nambour Museum

ONE of the district's unusual businesses was Nambour's Wax Factory.

It all began because a former cane farmer from the north, Canadian Frederick Henry Gilmore, was working on a process to obtain wax from mill mud, a by-product of sugar-cane crushing.

During World War II many imports including wax were unavailable.

In 1943, Army Headquarters approached Fred Gilmore about producing wax.

A factory was built next to the tramline in Howard Street and here the extraction of wax from filter press began.

By 1944, the factory was in full production providing wax for items such as carbon paper, teleprinter ribbons and polishes.

A local store, Heaton & Perren advertised

tins of "Chief All Purpose Cane Wax Polish" for three shillings and fourpence (34 cents) telling its customers that the polish was "easier to put on; doesn't smear; lasts far longer; safer to walk on; gives an amazingly hard brilliant finish".

Continuing with the sugarcane theme, the store also advertised cane knives - "To produce the wax the cane must be harvested".

Production continued until 1961 when the factory went into voluntary liquidation. The building was dismantled and sold as scrap, the land sold and today serves as the Big W carpark.

Involved in the Nambour Wax Factory were the sugar mill's chief chemists, Albert Shearer and later his nephew Vince Eglintgton.

Thanks to a donation from Vince, the Nambour Museum was able to add original samples of wax to its Wax Factory display.

LOCAL
INDEPENDENTLY
OWNED &
OPERATED

DIGNITY
DOESN'T COST
THE EARTH

Affordable &
Dignified Care
from \$2460

★★★★★
Google Review

"Such a lovely experience dealing with this amazing team at such a difficult time in our lives. They are very knowledgeable, supportive and caring in aspects of caring for our father. Thankyou for making a difficult time so seamless."



CHERISH
FUNERALS

24/7 care line

1300 854 363

4/27 Coronation Ave
Nambour 4560

info@cherishfunerals.com.au
www.cherishfunerals.com.au





You're always welcome at our place!

At BOQ, we believe a great banking experience comes down to offering truly personal service. So if you've been affected by recent changes to your bank, visit our friendly team to see how we can assist with all of your banking needs. We're just around the corner!

**Pop in and experience our truly
personal service today!**

BOQ Nambour & Hinterland

Matt Wall, Owner-Manager 0448 690 577 matt.wall@boq.com.au
5376 9999 facebook.com/boqnambourhinterland boq.com.au





Creating a better place for platypuses

Petrie Creek Bushcare News with Norm Morwood

PICTURED are some of the group of people finishing off their World Environment Day platypus viewing walk along Petrie Creek. The crew helped plant some bank-stabilising and habitat-creating native plants just downstream from the Mill Weir. Thanks all for your help.

If you'd like to do some BushCare in future events, creating habitat for our native animals, the next opportunities to join with us are as follows.

- Gulong Gung on Wednesday 28 June 2023 starting at 8am. (Parking is available in the NE part of Aldi Carpark in Howard St Nambour and then walk down to the creek by following the rough track that skirts the north of the carpark. Alternatively walk across the new park from Quota Park off Matthew St)

- Florabunda Pocket on Saturday 01 July 2023 starting at 8am. (Meet near the back Rugby oval at Woombye. Come down Laidlaw Rd and turn right just before the Gymnastics Hall, and follow that road till you see us)

► For more info see the FB Page <https://www.facebook.com/PetrieCreekCatchmentCareGroupInc/> and www.sunshinecoast.qld.gov.au/bushcare or contact Norm Morwood 0409 63 99 44 or email normmorwood@gmail.com

Resort proposes pro-am to support local golf program

A CELEBRITY pro-am event could be held at the Palmer Coolum Resort to benefit a golf program for people with disabilities.

The pro-am was one of the ideas discussed during a recent meeting between Golf Programs Australia Incorporated president Darrell Dalton and Palmer Coolum Resort golf superintendent Kelvin Nicholson.

The meeting was held after GPAI hosted a successful Special Olympics inter-club golf tournament at the resort course.

Forty-six golfers from Redlands, the Gold Coast, Moreton North, and Brisbane and 25 from the Sunshine Coast-based GPAI, played in the competition on 28 May.

Mr Nicholson put forward four offers to Mr Dalton following the tournament and further discussions are to be held.

"He'd heard about the event and what a great weekend it was and said, 'We've looked at ourselves and we'd like to do more,'" Darrell said.

Mr Nicholson's first offer to GPAI was 50% of the refunds from container recycling at the facility.

"Secondly, they were looking to host a charity golf pro-am for us at Yaroomba," Mr Dalton said.

"Thirdly, if we want to hold another event, their facilities staff would like to help us run it.

"And lastly, probably the most exciting, they were offering our students training through their resort."

GPAI provides opportunities for people with disabilities to learn and play golf, not only building their sporting skills but providing



From left, Luke Neylan and playing partner Colleen Smith, Marke Bowden and playing partner Carol McCoy and playing partner Tania Wood with Jarred Fleming.

opportunities for players and their families to build social networks.

The golf programs are supported a gift and golf shop and social enterprise in Nambour's Currie Street where trainees make items for sale and develop their confidence and retail skills.

The offers from the Palmer resort will support GPAI's programs and the organisation's quest for a purpose-built golfing facility to provide training and development opportunities for people with intellectual disabilities.

GAIP business and creative manager Michelle Dalton said the Palmer Resort's offers followed another from the Endeavour Foundation to send donated golf equipment to the shop for sale.

"I think people are looking at us and thinking, 'They've been around eight years, they continue to grow no matter what, what can we do to help?'" she said.

Business Write-ups

BEHIND every small business there's a story worth knowing.

Our Write-up Framework explains your business in a way that appeals to your customers so they will listen to what you say and be more likely to buy from you. Write-ups are engaging, memorable and they make all your other marketing work better. Phone Tanya 04000 69 711.

Grants offered for Sporting Champions

Ted O'Brien
Federal Member for Fairfax
ted.obrien.mp@aph.gov.au



Congratulations to brothers Matthew and Patrick Bonser of St John's College Nambour who were both recently awarded a Local Sporting Champion grant of \$750 each to help with the cost of participating in the Australian Youth Water Polo Championships in WA as part of the UQ Barracudas team.

Do you have a young sporting champion in your family?

Applications are now open for Local Sporting Champions and Local Para Champions grants of up to \$750 for 12 to 18-year-olds participating in state, national or international championships. For more information go to www.tedobrien.com.au.

Lighting Up Nambour

I was delighted to attend the recent launch of the Nambour Lights Up project, which was funded by a \$500,000 grant from the Federal Government in 2020 as part of the Reimagine Nambour initiative to revitalise Nambour and kick start urban renewal of the CBD.

This project is part of a 20-year plan to stimulate growth and investment, whilst also preserving Nambour's unique cultural and historical identity.

Thank you to local community members and former Sunshine Coast Councillor Greg Rogerson who have worked tirelessly for many years to drive the renewal of the historic town.

For information on locations and artists go to www.tedobrien.com.au.

Coolum Surf Lifesaving "Old Mates"

Recently, I had the pleasure of attending the opening of a local documentary film, "Old Mates" about a bunch of rowing mates, who have been together through life's ups and downs.

In part, it's a story about surf lifesaving clubs and a piece of history of the Sunshine Coast, but mostly it's about mates and mateship.

Hats off to local legend Rob Brough who pulled it all together. Congratulations to everyone involved!

Purple Palate Maleny

Purple Palate Picks

							
\$17⁹⁹ EACH	\$26⁹⁹ EACH	\$15⁹⁹ EACH	\$10⁹⁹ EACH	\$15⁹⁹ EACH	\$18⁹⁹ EACH	\$19⁹⁹ EACH	\$19⁹⁹ EACH
VILLA JOLANDA PROSECCO	JANSZ NV + RANGE	CHARLES PELLETIER BLANC DE BLANC & ROSE	YARRAN PINOT GRIGIO + RANGE	LA VIEILLE FERME ROSE + RANGE	PADDY BORTHWICKS PINOT NOIR + RANGE	MASSONI ESTATE CABERNET + RANGE	DOWIE DOOLE SHIRAZ + RANGE

							
\$18⁹⁹ EACH	\$19⁹⁹ EACH	\$68⁹⁹ EACH	\$95⁹⁹ EACH	\$19⁹⁹ 6PK	\$18⁹⁹ 4PK	\$19⁹⁹ 4PK	\$29⁹⁹ 4PK
YARR KANGARILLA ROAD PRIMITIVO + RANGE	DANDELION MENAGERIE GSM+ RANGE	CITADEL GIN	PLANTATION XO	COOPERS SPARKLING 6PK	COPPERHEAD IRISH RED 4PK	SUNSHINE VESPA 4PK	HELIOS KRONOS WHITE STOUT 4PK

Special offers on a great range of Wines, Beers and Spirits

**SEE INSIDE OF CATALOGUE AND VISIT US IN STORE
FOR MORE GREAT OFFERS**

**SPECIALS AVAILABLE FROM WEDNESDAY 31 MAY
TO TUESDAY 27 JUNE. WHILE STOCKS LAST.**



Can you help Nancy?

4 Paws Pet of the Week

INTRODUCING Nancy who is one of our long term residents. Nancy is a pretty playful 1-year-old lovable girl who has a friendly personality. With plenty of energy, she is an indoor cat who loves to play and interact with you. Belly rubs, cuddles and smooches are just up Nancy's street. This gorgeous girl at a tender young age has already given birth to a litter of kittens however she is now desexed, microchipped and fully vaccinated. Nancy has been with 4 Paws now for quite a number of months so the time has come for her to find her forever home!



4 Paws Animal Rescue provides refuge for homeless cats and dogs.

We are a non for profit organisation run entirely by volunteers.

Most of our animals come from council pounds, some are surrendered or abandoned, others are saved from cruel living conditions.

► If you feel that you could foster or adopt Nancy please visit our website:- www.4pawsanimalrescue.org.au

Now Showing at Majestic Cinemas

HERE'S what's showing now at Majestic Cinemas in Nambour.

Now Showing: The Flash (DC Superhero); The Little Mermaid (live action remake); Elemental (animated); Spiderman: Across the Spideverse (animated); Bank of Dave (British comedy/drama) and from June 22 Transformers: Rise of the Beasts and No Hard Feelings (Jennifer Lawrence rom/com).

► For more information on session times please visit www.majesticcinemas.com.au or phone 5441 2954.



Boutique estate offers generous blocks in Maleny

MALENY'S rolling green vistas are the envy of the rest of the coast and the opportunity for home buyers to secure a unique slice of the paradise that is Maleny, is now available.

Tallowood Estate is a highly anticipated land release located just a three minute drive to Maleny township, and walking distance to local schools and public transport connections.

The large blocks offer enviable rural views and fantastic connection to all amenities. "I am really excited to be part of this unique offering in the development market," said Maleny and Hinterland Real Estate selling agent, Jess Luthje.

Tallowood Estate is a boutique estate, offering larger blocks with room to play and grow."

With just 11 blocks in the estate, the minimum block size is 4,500m².

The Development is focused on creating larger rural residential blocks that give residents rolling rural views and the sense of space and privacy.

An extensive nature corridor has been

thoughtfully created through every stage of the development since the first day. Mature trees are abundant onsite, giving the development the feeling that it has been there for a long time.

A long-standing Maleny family is behind the creation of the Tallowood Estate. The family wanted to create a peaceful, private location that sits beautifully in the Maleny market. Its long standing appeal with buyers has stood the test of time.

"The first stage of this development was in 2002, and this next stage has certainly been highly anticipated," said Jess.

"This development is a standout and is unique to the market given the thoughtful planning and generous sized blocks.

"As the only sales agent involved with this development since 2015 it is certainly close to my heart, and I can't wait to present this next stage."

► Contact Jess Luthje on 0438 616 064 for more information about this unique opportunity.

New local grants recipients named

Andrew Powell

State Member for Glass House
glass.house@parliament.qld.gov.au



I've recently selected another four winners for my Local Heroes Grants and am excited to share them with you:

- Sarah, Stella and Billie – funding towards flying to Cambodia to teach English and hygiene to young girls;
- Cranky's Farm – helping to purchase winter



feed for rescued farm animals;

- Maleny Seed and Harvest Swap, pictured – covering venue hire fees for swaps;
- Woodford State School P&C – funding for a bush dance.

This round received the most applications so far making it harder than usual to pick the winners. The next round closes on Thursday 24th August. If winning \$250 sounds beneficial for you or your community/sporting group, be sure to head on over to my website and apply!

Budget misses mark

LAST week, the Palaszczuk State Labor Government handed down their ninth budget. It was lacklustre at best and dismissive at worst of the entire Glass House electorate. In the midst of a youth crime crisis, there are 72 less police officers in Queensland than there were at the time of the 2020 election. And while the Premier talks a lot about housing availability and affordability, it's been just that – talk!

There are no new solutions proposed locally. There was no money allocated to the Sunshine Coast Heavy Rail project, which is such an important link from Beerwah to Caloundra to Kawana and onto Maroochydore. More locally, there are no planned improvements to the number of 'problem roads' in Glass House.

ALL UNITS IN STOCK AND READY FOR DELIVERY

POLARIS MY23 RANGER DIESEL HD EPS ADC

\$31,995
+ Drive Away
+ \$2000 worth of free accessories*

24.8 HP
ON DEMAND TRUE ALL-WHEEL-DRIVE (AWD)
VERSATRAC TURF MODE

1,134KG TOWING CAPACITY
DUMP BOX CAPACITY 435KG
DONALDSON AIR FILTER
6 PLY TYRES
HEAVY DUTY FEATURES
ENGINE BRAKING SYSTEM & ACTIVE DESCENT CONTROL (ADC)
HANDBRAKE

POLARIS MY22 RZR 200 EFI

\$10,495
+ Drive Away

4 STROKE ENGINE - 180CC
PASSCODE PROTECT
POLARIS VARIABLE TRANSMISSION

TWO APPROVED YOUTH HELMETS
DISC BRAKES FRONT & REAR
ELECTRIC START
ELECTRONIC FUEL INJECTION
HELMET AWARE TECHNOLOGY

SAFETY FLAG
RIDE COMMAND WITH GEOFENCING AND SPEED LIMITING CONTROL

POLARIS MY23 RANGER 1000 EPS

\$23,995
+ Drive Away
+ \$1500 worth of free accessories*

61 HP
HIGH PERFORMANCE ON DEMAND TRUE ALL-WHEEL-DRIVE (AWD)

VERSATRAC TURF MODE
DUMP BOX CAPACITY - 454KG
ELECTRONIC POWER STEERING
1,134KG TOWING CAPACITY
IRS WITH 25.4CM OF TRAVEL

POLARIS MY23 RANGER XP 1000 PREMIUM

\$28,995
+ Drive Away
+ \$3000 worth of free accessories*

New LED Headlights
27" 8-ply Pro Armor X-Terrain tires & 14" wheels
27.94cm Suspension Travel
3-Mode Throttle Control
Engine Braking System
Premium Interior Accents
6-Position Polaris Pulse Bus Bar

POLARIS MY23 RZR XP 1000 SPORT EPS

\$27,995
+ Drive Away
+ \$1500 worth of free accessories*

Bowed quarter doors
50.8cm/50.8cm Usable Travel
Walker Evans Needle Shocks
29" Maxxis Big Horn Tyres

POLARIS MY23 RANGER CREW 1000 PREMIUM

\$29,495
+ Drive Away
+ \$1000 worth of free accessories*

61 HP
HIGH PERFORMANCE ON DEMAND TRUE ALL-WHEEL-DRIVE (AWD)

VERSATRAC TURF MODE
DUMP BOX CAPACITY - 454KG
ELECTRONIC POWER STEERING
1,134KG TOWING CAPACITY
IRS WITH 25.4CM OF TRAVEL
SEATS 6



SUNSHINE COAST POLARIS | 46 Wises Rd, Buderim QLD 4556
P. 07 5442 0660 | www.sunshinecoastpolaris.com.au

Offer ends 30/06/23 or while stocks last. Offer only available at participating Polaris Dealers. Not valid with any other offer. Excludes fleet clients. Selected units have accessory offers: MY23 Ranger Diesel HD EPS ADC includes \$2,000 worth of accessories. MY23 Ranger 1000 EPS includes \$1,500 worth of accessories. MY23 Ranger XP 1000 Premium includes \$3,000 worth of accessories. MY23 RZR XP 1000 Sport EPS includes \$1,500 worth of accessories. MY23 Ranger Crew 1000 Premium includes \$1,000 worth of accessories. Accessory offers are only valid with the purchase of a new MY23 Ranger Diesel HD, MY23 Ranger 1000 EPS, MY23 Ranger XP 1000 Premium, MY23 RZR XP 1000 Sport EPS or MY23 Ranger Crew 1000 Premium.



Dance Art Etc is Nambour's new hub of bellydance and Egyptian drumming

Embrace the rhythms of the East

GRAB your coin belts, your dancing feet & prepare to be whisked away into the world of Bellydance and Egyptian Drumming at Nambour's new hub of the arts, "Dance Art Etc".

You might have already heard the sound of joyful drumming or the melodies of the Middle East echoing through Currie Street, and if not, you are invited to join these brand new classes for all ages and all levels.

Join Belinda of Embellyment & Esha with a variety of bellydance classes on Tuesdays & Wednesdays (morning and evenings) with foundational beginner basics, challenging intermediate combos & choreography classes with props such as

veils, swords and fan veils.

Adel Amin of Joyful Drumming School is running his Middle Eastern rhythm courses at 6.15pm on Tuesday nights.

These classes are not to be missed if you want a good solid foundation in drumming or want to uplevel your skills.

The full timetable is available at www.danceartetc.com.au or call 1300 018 550 as we have many other styles available for you to explore. Of course you can always shimmy your way in to meet the team and introduce yourself to the space. We look forward to creating movement and music with you.

Beyond labels

Exhibition places focus on ability

By Compass team member **Sandra Brodie**

THE Compass Institute's 'See the Able, Not the Label Photo Exhibition' showcases eight Compass Trainees from across its 20 year history, in large-format portraits.

The Exhibition was unveiled in March, as part of The Compass Institute's 20th Birthday Celebrations, and will travel across different locations on the Sunshine Coast.

When Damien Stevens was ready to graduate high school 20 years ago, his options were bleak. His mum, Donna, recalls the angst in trying to work out what Damien was going to do after leaving Nambour Special School.

"I remember there was a program back then called 'Moving Ahead' for post-school," she said.

"It was honestly the worst process. You had to fill in all of this paperwork that asked you to detail what the worst day with your son or daughter might be like. It was extremely confronting."

Donna went through this process with two other parents from the Nambour Special School. They all shared the same concerns about where their sons would end up.

To try and assist parents, the Special School organised various disability services to speak about what they could offer. Donna recalls how deflating that process was.

"The agencies had great marketing spiels, but it was all about what they could do for people with physical disabilities. We asked about our kids with intellectual disabilities and what they could offer them – and they literally had no answer. It's like they hadn't even thought about it."

For a person with a disability, particularly an intellectual disability, life beyond school is confronting.

Fortunately for Damien and Donna, their journey allowed for another pathway.

"I was really sick at the time," said Donna.

"My back had gone out and I was in hospital, anxiety-ridden, trying to weigh up the pros and cons of where to send Damien. My eldest son had spoken to David Dangerfield (CEO of Compass, which was called 'Aiki-Abilities' at the time).

"He talked about being a productive member of the community and not hiding people with intellectual disabilities away. Nobody was doing that back then. So that's where it all started for us."

Twenty years later, Damien is still with Compass where he continues to thrive.

Andrew Diggins, Compass Support Trainer and Com-



Compass Trainee Damien Stevens features in the exhibition.

pass Farm Manager, has worked with Damien for over 14 of those years.

"Damien is an absolute gentleman," said Andrew.


"He's beautiful on the inside (and the outside!), hilariously funny and witty. He's your typical male, Aussie larrikin."

When asked what she's most proud of about Damien and his journey, Donna simply replies, "I'm most proud of the man he has become and the friendships that he has. He's just an amazing, loving and caring man."

Looking ahead to Damien's future, Donna's dream is that he continues to thrive, live happily and be surrounded by friends and people who care for him, the person.

And Damien's dream? That he can be around his family and his mates forever. At the end of the day, it really is the simple things in life that matter most. The genuine connections that give our life purpose and meaning.

► The Gazette will feature the participating trainees and tell some of their stories in coming editions. To read more about this and other stories, visit www.seeme.org.au.


**PALMWOODS
GARDEN VILLAGE**
BY SUNDALE

**INDEPENDENT
LIVING UNITS
NOW
SELLING**


SUNDALE
Because we care

retireatpalmwoods.com.au



LIFE. STYLE. CARE.

- A peaceful country style, low maintenance retirement community within the historic town of Palmwoods. You'll love being conveniently located close to the community clubhouse, offering a vibrant and active lifestyle.
- Ideally located, you are close to shops, cafes, recreation and transport – offering a perfect blend of privacy.
- Our units are designed with your comfort in mind, featuring open-plan living areas and stylish finishes. Enjoy all the comforts of modern living in a beautiful community.
- The co-located Care Centre offers a range of care options to meet your needs, if and when you need it.

FROM \$505,000

61 Jubilee Dr, **Palmwoods**

BOOK A TOUR

Please call Shorelle on **1800 572 422** for more information or to book a tour

Images are indicative and to be used as a guide only. Information correct as at May 2023 and subject to change without notice.

‘This is one of the best Shows in Australia’

• From Page 1

this is one of the best shows in Queensland and best shows in Australia. I had two lots of entertainers tell me this was the best. They would class it as the best regional show in Australia.”

Despite Covid and the economy, Mr O’Hara said people were still keen to support local events.

“Things are obviously starting to get tough with interest rates and all that. But for a pretty cheap ticket on the gate, you can still have a really good day’s entertainment.”

He said the Show exemplified Nambour’s deep community spirit.

“One of the major highlights for me a few days before the show is watching all the volunteers come together and the hundreds of people that come together and put the show on. And watching them all work in their different sections. All year round we don’t hear from them. We might not see them. But they’re in

is obviously educating the community on agriculture and the community aspects of that.

“One of my favourite little stages is the education stage down here in the livestock area.

“So this year, we had everything from sheep shearing, and Guy McLean’s horsemanship show. We had beekeeping, we had gin tasting, and a discussion from Sunshine and Son’s about how gin’s made. We had the lapidary club down here doing a display. We had Maleny Botanic Gardens with their birds. So people could actually watch and learn and have the opportunity to engage and ask questions.”

Mr O’Hara said it was a relief to move on from the Covid difficulties of the last few years.

“We still obviously take our health plan very seriously. But it’s good to know that we can move on from that. And yeah, we can put a show on and we’re well and truly back to normal and growing.”

Rowan O’Hara: “For a pretty cheap ticket on the gate, you can still have a really good day’s entertainment.”



the background, toiling away. And it comes to the point where it all comes together – and it works like a well-oiled machine.”

As well as the more spectacular attractions, Mr O’Hara said the purpose of the show remained to highlight the area’s rural roots.

“I mean, that’s our core focus and it’s what we are, is agriculture. Yes, we are about the fun and the motorbikes and the fireworks, and that. That’s a great part of it, an exciting part of it. But underneath all of that

He thanked his committee, volunteers and the general public.

“The committee that worked behind the scenes tirelessly all year round, the hard workers there, the backbone of the show.

“Our volunteers are definitely a Godsend. We had a lot of new volunteers involved in it this year. We’re always looking for more. And it’s really exciting, not only to have them here as volunteers, but to get to know them as people, too, and friends.

“I’d also like to thank the general public of the Sunshine Coast who came to support us because without them we wouldn’t have a show.”

And, after a year of planning and the gates closed, there was still heaps to do for show administrators and volunteers.

“We’ve had a pretty big day cleaning up,” said Rowan on Monday. “We didn’t finish till 11.30 last night, pulling out all the lighting. And then, yeah, I was here at 6.30 this morning. There’s always heaps to do. We could always do with more volunteers!”

Bursting with tradition, overflowing with food, fun and excitement

THE Sunshine Coast Agricultural Show dates back 117 years and is bursting with tradition. But this year’s event also offered plenty of cutting-edge entertainment.

Show bags, side show alley, international horse whisperer Guy McLean and other show-time favourites featured at the June 16-18 event.

Show Manager Penny Walsh said the Show lived up to expectations.

“For more than 100 years the Sunshine Coast Agricultural Show has given local people and local businesses a platform to showcase their products, their animals and their amazing skills to our community,” she said.

“That wonderful and important tradition along with all the others people know and love was definitely

back at the Nambour Showgrounds in 2023.”

Showgoers experienced high-octane V8 Supercars and high-adrenaline motorbikes with Aussie FMX stunt riders.

Then there was the slower paced ferris wheel, fairy floss, a petting zoo, cattle judging, show jumping, wood chopping and of course the dagwood dogs.

The Show also featured a Freedom of Entry march involving the Australian Air Force Cadets Nambour Squadron as part of their 80th birthday celebrations. Cadets marched to the main gate of the showgrounds where they requested Freedom of Entry into Nambour.

There were spectacular fireworks displays on each night.



Alex Walker from Mooloolaba with Clary.



Jaala Hill and daughter Harlow Hill & Sam Schneider with son Nixon.



Bree-Monique Barry & Alexander Raven show off their pink hats picked up for just \$10.



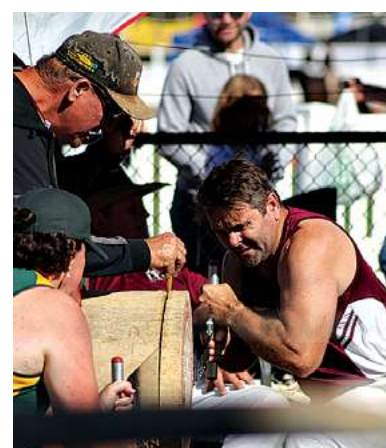
French exchange students Ida Verbeke & Florine Compare made some extra cash selling fairy floss.



From left, Melissa Shanks, Show Office Manager Penny Walsh, Renee Shanks and Charlie Green were kept busy.



The Rotary Club of Nambour kept the hungry masses well fed.



Mark Cockeril of the Sunshine Coast Poultry Club.



Costa's back at the Garden Expo

GARDENING Australia's Costa Georgiadis joins a record number of well-known gardening presenters heading to Nambour Showgrounds for the Queensland Garden Expo, July 7-9.

Event Manager Marion Beazley said the three-day speaker program would also feature firm favourites like Gardening Australia's Sophie Thomson, Jerry Coleby-Williams and Millie Ross. New speakers like celebrity chef Matt Golinski and domestic poultry experts from across Australia will also share their knowledge.

"We are proud to host Australia's largest gardening speaker program at the Expo, with 45 speakers across eight stages over three days, and this year we have much of our gardening royalty headlining the program as well as an incredible array of other gardening experts covering a wide range of topics," said Ms Beazley.

"We know our visitors plan their days at the Expo in advance, according to who is speaking at which stage across the Nambour Showgrounds so the release of this program is always much anticipated.

"Of course, we are delighted to confirm that Costa will join us again this year. His charm, energy, exceptional knowledge of all things gardening and permaculture and ever-increasing profile on the small screen have earned him a substantial following and a somewhat iconic status at the Expo - with old and young visitors alike.

"Costa will once again spend much time in the popular Kitchen Garden, including a garden ramble and special sessions for the young gardeners on the Terraces when he dons his goggles and becomes Costa the Garden Gnome."

Mr Georgiadis said he was looking forward to returning to Nambour.



Gardening Australia's Costa Georgiadis: "It's all about gardening for the soil and the soul!"



"What makes it so special is that those who come and join us, can talk directly to some of the most knowledgeable and experienced gardeners we have in Australia. Whether you're

new to gardening or you are a seasoned expert looking for specialist advice, this is the best place to find it all.

"The Expo is also a great opportunity to expose kids to all the benefits of gardening for the mind and the body, which they can then take forward and use for the rest of their lives. It's all about gardening for

the soil and the soul!"
• The full speaker program is available on the official Queensland Garden Expo website at www.qldgardenexpo.com.au.



Members of the Maleny and District Men's Shed welcome the grant.

Grant supports men's shed fit-out and mental health

THE Maleny and District Men's Shed will soon be able to complete the fit out of their second Shed thanks to a Queensland Country Bank "Good for Good Community Grant".

President Kevin Trevarthen said the \$3886 would be put towards the fit out of their secondary shed and enable the organisation to increase the activities on offer to the local community.

"The Maleny Men's Shed offers men, many of whom are retired or unemployed, a place to come and work on their own or community projects; or men may choose to just enjoy the companionship of others," said Mr Trevarthen.

"Our current facility is at capacity and moreover is dedicated to woodwork and metal work so we cannot offer other activities which have been requested.

"We also do not have a dedicated lunchroom and kitchen for smokos and lunches, or disabled toilets, or a space to provide training and presentations on important topics such as men's health, digital literacy.

"The grant provides significant financial assistance towards the completion of the new shed, allowing us to expand our activities and provide an additional asset to

the Maleny community."

Mr Trevarthen said the grant funding meant they've been able to redirect their own funds back into supporting the community.

"We have already had to redirect substantial funds to costs associated with an unanticipated Town Planning Development Application, and without the grant, would have been required to redirect even more funds to complete and certify the project," said Mr Trevarthen.

"We were very pleased to see the Queensland Country Bank supporting local not-for-profit organisations, particularly as it has relatively recently taken over the local community-based credit union."

Queensland Country Bank Maleny Branch Manager Jodie Nolan said the second shed would help ensure the organisation could continue its important work. "One of the advantages of being a member-owned bank is that we can give profits back to the community in the form of grants such as this one," said Ms Nolan.

"The Men's Shed is a valuable part of the Maleny community and has been instrumental in promoting physical and mental health amongst men."

QUEENSLAND'S PREMIER *Gardening* EVENT

IT'S LIVE!
in Queensland



Queensland
Garden EXPO

PRESENTING PARTNER



Queensland
Country
Bank

7 + 8 + 9 JULY 2023

NAMBOUR SHOWGROUNDS - SUNSHINE COAST

More than 360 exhibitors including 55 nurseries
60,000 plants for sale daily • New and exciting workshops
Giant organic kitchen garden • Free lectures and demos
all day, every day • Free advice from leading gardening experts
Food courts, entertainment and free kids playground
Floral design competition including the 2023 Australian
Floral Art National Convention and more!

PROUDLY ORGANISED BY



Nursery & Garden Industry
Queensland

OUR PARTNERS



Sunshine Coast
COUNCIL



Queensland
Country
Bank

www.qldgardenexpo.com.au



TICKETS
AVAILABLE
ONLINE
NOW!



Do you experience forearm tension and pain? There could be more going on

Wellbeing with Linda Goggan, from Sacred Body, Montville

HAVE you ever noticed how much tension you hold in your forearms? Most people are not aware of this until they get an arm massage and then the tension built up in these frequently used yet neglected muscles is exposed. It is often when this part of the body is worked on during of a full body massage that people start to express that they just don't get enough massages, or they talk about how they get caught up in life and forget just how good a massage is.

Forearm pain and tension can happen for many reasons on a physical level such as over-use, nerve entrapment, injury, or arthritis. But what is going on energetically that sets us up for such things to occur in this part of the body?

Pain, tension, or dysfunction in the forearms is a good indicator of just how much drive someone is in. They are often moving throughout their day in drive and motivation instead of moving in purpose. It's easy enough to do and most of us get caught in this movement particularly when we just want to achieve and/or get a result. Sometimes the result is to just get through the day. When we move this way with this low vibration of energy, we will find the delicateness of the forearms (particularly the inner arm) is overridden and they become hardened with tension.

If we were to move through our daily activities in purpose instead of drive, we would be more deeply honouring the delicateness that naturally emanates from this part of our body. Living in the energy of drive can also lead to issues with the elbows which naturally emanate the quality of inner and outer support. So, when we are in drive instead of purpose, we can also often feel like we are not supported by others etc.

To change this we need to learn the purpose of everything that we do.

True purpose is in the little details of life. It's not about careers and vocations, this is about knowing and understanding what it is your movements are bringing you and others in a bigger and unseen way. For example, you are not just vacuuming a floor because it's dirty and needs cleaning. When done in a true movement of purpose you are imprinting a foundational surface to a space that others will walk on and feel the care and love of the space which then resonates throughout their body. Instantly you have brought healing to another



simply by vacuuming the floor. What can be more purposeful than that?

We underestimate how powerful we are when we move our bodies with purpose instead of drive.

Study your living way, and have fun with it. Notice the difference when you approach your days with purpose. Feel it in your body, there is a clear difference. When you move in purpose you are energised and impelled to move with more purpose. When you are in drive and motivation you are drained of energy, you are tired and exhausted, and are not supported to bring more.

Experiment with purpose, your body will thank you for it.

► For more information contact Sacred Body on www.sacredbody.com.au.

What's On in June ...

► June 21: **I Am Nambour video and branding package** showcasing Nambour and hinterland's green surroundings, food, restaurants and cafes, live local music events and creative local art exhibitions will be launched at Nambour Town Square in Lowe Street.

► Until July 11: **"Natural Affinity" exhibition** at The Old Ambo explores nature and art through drawing, ceramics, photography, printmaking, and painting. Open 10am to 3pm, Monday to Saturday.

► June 21, 22: **Piers Lane** solo recitals featuring works by Chopin, Tchaikovsky, Liszt, and Rachmaninov at Lucas Parklands, Montville. Contact 0409 623 228 or 07 5478 5667 for tickets.

► June 23-25: **Graceville Art Festival** at St Luke's Lutheran Church, Nambour. Explore diverse artworks, including the captivating mandalas of featured artist Billie Baxter. For more info and workshop bookings, visit www.gracevilleartfestival.org.au.

► June 24: **Mapleton Country Markets** from 8am to noon. Mapleton Country Market features some amazing locally grown and made items and foods for sale. The Market is at Mapleton State School, 24 Flaxton Drive, Mapleton.

► June 24, July 22 (9am): Nambour Croquet Club invites newcomers to **"Come and Try Croquet"** at Coronation Drive. Equipment provided. Contact Patrick at 5472 7287 or berpat@bigpond.com.

► June 24: **Rugby League**, SCGRL Round 11, 6pm, Nambour A Grade Men v Kawana A Grade Men at Crusher Park.

► June 24: **Football** FQPL Woombye Snakes v Buderim Wanderers at Buderim, 6pm.

► June 24: **FQPL3 Football**, Nambour-Yandina United v Caloundra at Caloundra at 5pm.

► June 24 : "In Process - Form and Function" live **art, music and dance event** from 6pm at Maleny Equestrian Arena. Tickets via davidbongiornoart.com/performance.

► June 24 and 25: **Camellia House Open Days** at 116 Woombye-Palmwoods Road, Palmwoods, from 9am to 4pm. Entry is \$5, with all proceeds supporting the Autism in Children organization. Children free.

► June 28: **Introductory Tai Chi courses** by Taoist Tai Chi Society at Nambour Uniting Church Hall. Obligation-free first session at 9am. Contact Taoist Tai Chi Society for details.

Coming up in July ...

► July 1: **Soup n Soul Exhibition & Art Market** from 9am-2pm at Sunshine Coast Art Group Club Rooms, 1 William Parker Place, Buderim.

► July 7-9: **Queensland Garden Expo**, Nambour Showgrounds. Three-day expo featuring Australia's leading gardening gurus in lectures, demonstrations and workshops.

What's On Day by Day in the Hinterland

Local Events and Entertainment coming up. Preference given to local events of widespread interest. Please check details with organisers. Contact editor@sunshinevalleygazette.com.au.

► July 7-9: **Genealogy Sunshine Coast** will have a stand at the Nambour Garden Expo on the weekend.

► July 8: **Rugby League**, SCGRL Round 12 at 4:30pm, Cooloom A Grade Men v Nambour A Grade Men at Ronnie Cargill Oval.

► July 8: **Australian Football**, Hinterland Blues v University of Queensland at 2pm at Palmwoods G Rae Oval, Jubilee Drive Palmwoods.

► July 9: The **Mapleton Choir** presents "A Celebration of Australian Legends" at Kureelpa Hall at 2.30pm. \$20 tickets are available at the door or phone Ailsa on 5478 6079.

► July 15: **Australian Football**, Hinterland Blues v Beenleigh QFA Div 1 Seniors v Hinterland QFA Div 1 Seniors 2pm at Beenleigh, Guardian Gantry Hire Oval.

► July 15: **FQPL3 Football**, Nambour-Yandina United v Buderim at 6pm at Yandina.

► July 15: **Rugby League**, SCGRL Round 13 at 6pm, Nambour A Grade Men v Noosa A Grade Men at Crusher Park.

► July 18: **Woombye Community Library AGM** 12noon in the School of Arts Hall. Queries please call the Library on 5442 2250.

► July 20-23: **Mary Valley Art Festival** at the Imbil Public Hall, Edward Street, Imbil.

► July 22: **Rugby League**, SCGRL Round 14 at 6pm, Nambour A Grade Men v Maroochy-dore A Grade Men at Crusher Park.

► July 22 (9am): Nambour Croquet Club invites newcomers to **"Come and Try Croquet"** at Coronation Drive. Equipment provided. Contact Patrick at 5472 7287 or berpat@bigpond.com.

► July 22: **FQPL3 Football**, Nambour-Yandina United v Woombye at Woombye at 6pm.

► July 23: **18-Piece Big Band Concert** by the Scream Jazz Orchestra at Palmwoods Memorial Hall from 2pm. Info: screambigband@gmail.com or 0434 675 529.

► July 26: **Outspoken presents Anna Funder** in Conversation Maleny Community Centre, 6 for 6.30pm. Tickets \$25 and \$18 students, www.outspokenmaleny.com

► July 28 to August 6: The **Curated Plate** features more than 100 events from local producers and suppliers over 10 delicious days.

Classifieds

Yoga

HATHA YOGA/PILATES RELAXATION

Hatha Yoga Pilates is held at the Woombye Hall: Sat 9am & Wed 9.30am. Beginners & Seniors welcome. Cost \$10. Call Christine: 5441 6285 (Cert. in Pilates matwork; Dip. IYTA: Yoga Instructor; USC Sport & Exercise minor: Ex. Prescrip. for Health & Rehab.)

House For Rent

Share rental 3 bedroom house in Nambour. Double lock-up garage, big shed, a/c, lots of storage space. Five minute drive to Nambour CBD, schools & shops. \$240pw + phone and electricity. Contact Barry on 0407 121 092

Recruitment

Home Care Support Worker

- Cert III of individual support required
- Fixable time

IF INTERESTED, CALL OR EMAIL
0402 383 527
office@cfaq.com.au

House For Sale

How nice would it be to retire in a beautiful tropical paradise?

For sale, a new home with a legal structural warranty. Good sized living/ dining/ kitchen air conditioned area. Fans in bedrooms with moderate sized balcony front and rear. Larger garden shed, 2 car accommodation and a very large and beautiful garden. The home is situated in the Palmwoods Over 50's Residential Tropical Village. Offers over \$390,000. To enquire, please call 0421 005 121.

Genealogy Sunshine Coast at Nambour Garden Expo

GENEALOGY Sunshine Coast will have a stand at the Nambour Garden Expo on the July 7-9 weekend. They will have a display of many of the books they have printed as well as lots of photos for people to help identify. Members will be available to help with enquiries and assist with research.

The Annual General Meeting will be on August 19 and the group is hoping to get many new volunteers to help us with research and activities. "This is very rewarding and you will not only learn many new skills but also work with a great bunch of people," a spokesperson said. "We are also hoping to hold an Irish Seminar on Saturday 17th February 2024 with many of the speakers who came to our last one. This will be a weekend not to be missed so put it in your diary."

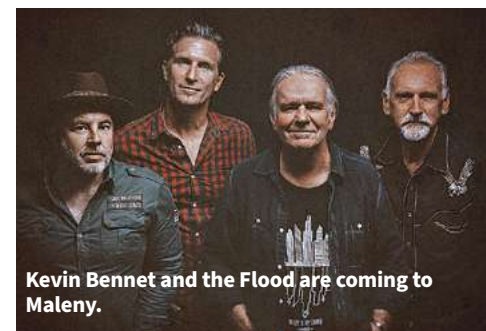
Sunday arvo Bowls, Beers & Burgers at Woombye

LOOKING for something to do on a Sunday afternoon? Woombye Bowls Club is running a Burger, Beer and Bowls afternoon once a month on a Sunday afternoon. It started Sunday June 18.

Join them for a relaxing and enjoyable afternoon of barefoot bowls in the winter sunshine with a steak burger, beer/wine or soft drink. It's \$10 for children aged 8-16 and \$20 for adults.

It's a social afternoon, so everyone is invited. Come barefoot or in thongs or flat-soled shoes. Bowls and instructions are both available on the day.

► Bookings Essential so phone the club on 5294 5245.



Kevin Bennet and the Flood are coming to Maleny.

Kelly Cork and his Golden Friends live at Maleny RSL

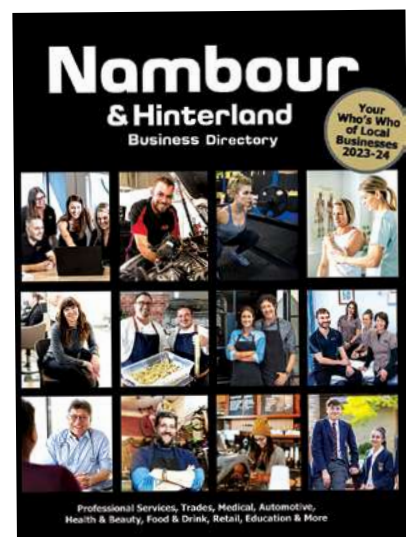
RENOWNED Australian Singer Songwriter Kelly Cork has teamed up with Golden Guitar legend Kevin Bennett and his incredible band The Flood, along with local favourite "Richo" Richardson to bring you an incredible night of live music at Maleny RSL July 29.

The Flood has recorded 7 universally acclaimed albums including 'The Ballad Of KB', which was named in Iain Shedden's Top Twenty Australian Country Albums of all time, while Rhythms magazine calls The Flood 'the best Australian Roots band since The Dingoes.'

• Meals and full bar service will be available from 6pm, entertainment starts at 7pm. Tickets via Oztix.

Woombye Library AGM

THE Woombye Community Library Inc AGM will be held on July 18 at 12noon in the School of Arts Hall. Councillor Winston Johnston will chair the meeting. A light lunch will be served after the meeting. Any queries please call the Library on 5442 2250. - Chris Milloy, Library Convenor.



Everything you need to promote your business for a whole year!

- Editorial-based annual magazine featuring local businesses with compelling stories and attractive pictures.
- 15,000 printed copies + Gazette website, Facebook & email exposure.
- Professional Services, Real Estate, Trades, Medical, Food & Drink, Retail, Education & more.
- **Early-bird offer:** have your story re-published in the Gazette in addition to all of the above.
- Prices from just \$300*^{gst}

Scan the Code for details or phone Tanya
0400 069 711.





“While they will pick at ripe mangos this is the first time I have seen them attack very green immature mangos”.

Rainbow Lorikeets feast on mangoes

Nature Watch with Don McGlusky of Diddillibah

RAINBOW Lorikeets (*Trichoglossus haematorodius*) are often referred to as the Blue Mountain parrot. They are common in timbered areas of Eastern Australia from Cape York to the Eyre Peninsula in South Australia, as well as Tasmania, New Guinea and many of the Pacific Island countries to a lesser degree.

They are the most colourful of all Australian parrots making them the subject of painters and photographers. They show no fear of human contact as a trip to Currumbin Wildlife Sanctuary on the Gold Coast attests as they swarm on visitors to be fed.

The sexes are similar in colour with juveniles being duller. They breed mainly from August to January in tree hollows near water.

A normal clutch is two, seldom three, white eggs. They are very noisy with much screeching while feeding on nectar, native fruits and berries as well as insects and their larvae. The specimen in the photo was taken during the extreme rain event of a year or more ago.

This would have destroyed the bird's usual food source of blossom and fruit to a great degree. While they will pick at ripe mangos this is the first time I have seen them attack very green immature mangos.

At times I estimated there would be close to a hundred birds in the mango trees which virtually destroyed the crop.

Hinterland Markets Guide

- Nambour Town Markets return to Lowe and Short Streets, Nambour. Every Thursday 8am-2pm, featuring fresh food, handmade wares and vintage bric-a-brac. Contact Wayne on 0409 115 283 for stall inquiries.
- Every Saturday: Yandina Country Market from 6am to 12pm, North Street, Yandina.
- Every Saturday: Kenilworth Country Markets from 8am to 1:30pm at Kenilworth Town Park, Charles Street.
- Every Sunday: Maleny Art, Craft and Collectables Markets 8am to 2pm Maleny RSL.
- Second Saturday of the month: Montville Growers and Makers Market, 7am to 12 noon at the Village Hall. Enquires: Liz 0424 042 376 or Visit montvillevillageassociation.org.au.
- Yandina Second Saturday Handmade and Vintage Market from 8-noon every month at the Yandina School of Arts hall. Enquires: Lyn 0407 828 431.
- Third Saturday of the month: Witta Growers Markets, 7.30am-12noon, 50+ stalls, enquiries: wittamarket@gmail.com.
- This Saturday: Mapleton Country Markets at Mapleton State School.
- Nambour Rummagers Market Every Second Month, Sunday 9am to 1pm at Nambour Tram Co, 28 Mill Street, Nambour. Handmade, pre loved and vintage treasures. rummage@NambourTram.com.au



Experience Natural Beauty at the Old Ambo exhibition

TAFE students recently had the opportunity to show off their breathtaking photographic skills at Nambour's Old Ambulance Station Gallery, and now it's time for their teachers to shine.

Natural Affinity is a big and beautiful collection of art interpreting the natural world around us, produced by 10 artists working at TAFE Qld East Coast. With drawings and ceramic art, contemporary photography, printmaking and painting, this exhibition encourages gallery visitors to consider our intertwined relationship with nature.

“We are all colleagues who work together as art teachers in various forms, so we have

an affinity with each other,” says Andrew Bryant. “A recurring theme in all our works is a reference to nature, and that became the basis and title of this exhibition. We are all working as teachers to support our practice of art, and it's a great feeling to have this show. There is always a purpose or need to produce art. We love what we do but it is more about feeling compelled to do it.”

► The Old Ambo invites everyone to celebrate the colours, textures, and spirits of nature right here at 80 Howard St, Mondays to Saturdays from 10am to 3pm. Entry is free and Natural Affinity runs until July 11.

Outspoken presents Anna Funder in Conversation

OUTSPOKEN is delighted to welcome Anna Funder back to Maleny. Anna is the highly-acclaimed author of *Stasiland* and *All That I Am*, which, between them have sold over half a million copies in Australia alone. In her new book, *Wifedom*, Anna's attention is focused on the Orwells, and onto Mrs Orwell in particular.

“I have always loved George Orwell, his self-deprecating humour, his laser vision about how power works, and who it works on,” she said.

It was to Orwell she would turn when her own life began to overwhelm. But then she read about his wife, and her curiosity was piqued.

Eileen O'Shaughnessy was also a writer, and her literary brilliance not only shaped Orwell's work, but her practical common sense saved his life. Using newly discovered letters from Eileen to her best friend, Funder re-creates the Orwells' marriage, a period that includes both the Spanish Civil War and the Second World War.

Outspoken's introducing author will be Angela O'Keefe, speaking about her new



Anna Funder

novel, *The Sitter*.

► Outspoken is at Maleny Community Centre, Wednesday July 26, 6 for 6.30pm. Tickets \$25 and \$18 students via www.outspokenmaleny.com

‘Rail revolution’ just keeps going ‘round and ‘round

by **Jeffrey Addison**, Sunshine Coast Commuter Advocate



TUESDAY 13 June and Queensland Treasurer, Cameron Dick delivered the 2023-24 State Budget, it was accompanied by a healthy \$12.3 billion surplus – ironic, in light of Queenslanders being hit with huge electricity [and gas] price increases.

The electricity increases occurring despite the fact the state government own the bulk of the network and assets.

“The highest priority of this budget is cost-of-living relief,” the Treasurer said.

I received my Origin Energy notice of electricity price increases starting 1 July, it comprised:

- A 16.9% increase in Controlled Load 1 usage (kWh), more commonly known to us as Off Peak Hot Water;
- A 24.1% increase in General Usage (kWh) electricity;
- A 22.4% increase in a (cents/day) Daily Supply - Controlled charge; paid daily to be connected to the electricity grid; and
- A 13.2% increase in a Daily Supply (cents/day) charge.

It's a good thing I have solar - as now I'll be hoping for some global warming to boost its output.

[Author's note: For the record, a warmer day doesn't necessarily mean a higher solar output].

Of course the solar feed-in tariff (what they pay us for generation) didn't increase whatsoever; it remains anti-inflation steady at 49 cents/kWh.

That said the additional 8.526 cents per day Solar Meter Charge didn't increase either, so some good news there. I just hope they don't consider bringing in a new (cents per second) find-your-meter-box charge.

Back to the task at hand...

In my examination of the last budget (Sunshine Valley Gazette, June 23, 2022) I noted the claim of a new \$3.5 billion ‘rail revolution’, a claim which I said was misleading, in that the projects discussed were all (bar one) existing or in progress.

I note that there's no mention of that continuing ‘rail revolution’ in this year's budget.

I can only assume that that wheel must've fallen off.

This year's budget contains an extra \$14 million for rail, expended over 3 years, until 2025.

It's for a business case into the 37km Direct Sunshine Coast Line.

It shows \$5 million has already been expended upon it this financial year.

A reference to it is found in the latest Queensland Transport and Roads Investment Program (QTRIP) paper, p65.

The \$6m rail investment plan currently underway and due in 2024, was going to review the route, stations and costings.

I wonder why they needed a separate business case?

They could've updated the one made when CAMCOS rail was first promised in circa 2005.

B2N continues, at snail's pace

Now to the B2N and its snail's pace.

This analysis, updated from 23 June 2022, explains why.

Since 2018, they should've spent \$238.772 million on B2N.

To date, they've spent \$103.26 million, being 59.4% of what was budgeted.

That's an average spend of \$20.65 million per year, over five years, for what's claimed to be a priority. On the bright side this financial year, they spent what was budgeted – for the very first time. I was hoping there'd be \$250 million to extend the #2tracks to Landsborough, where they announced they'd go.

Unfortunately, that requires integrity.

New carers share knowledge and learn to protect our wildlife

Nature Watch News from Donna Brennan Wildlife Volunteers, WILVOS, 5441 6200 www.wilvos.org.au

IT'S been a busy couple of weeks for WILVOS following an Induction Day for new members, followed by a Caring for Birds workshop in the Yandina School of Arts Hall. Thanks Sharon, everyone really enjoyed it and learned so much!

One of the best parts of being a wildlife carer is sharing knowledge with each other and helping new carers. It is great to see new volunteers on our 5441 6200 Hotline team.

The community members who have worked on the Yandina School of Arts Hall have done an amazing job. The small hall at the back is

unrecognizable. WILVOS love to use it for small workshops as it has a cosy, welcoming feel.

What would we do without volunteers in our community? So much more is achieved with so much less outlay.

So many youngsters participate in events at the hall, along with a variety of community organizations. Thank you to all involved in the extensive renovation. It will be a sad day for Yandina should approval be granted for a service station across from the Yandina School of Arts Hall. One of the busiest intersections in town just with the present ‘through’ traffic, a service station will make it noisy for those

using the hall, and lessen the parking options. Let's hope sanity prevails!

Our next training day for members is a possum workshop and we have certainly had a large number of possums and gliders come into care for rehabilitation over the last months. It has not been a good year for ringtail possums, with so many orphaned ‘twins’ coming into care. They are very lonely if they come in just by themselves. They soon settle into a group of four or five, which resembles their numbers in their family drey. With their special marsupial milk formula and plenty of fresh new-growth leafy these little ringtail possum joeys thrive.



A ringtail possum joey.

MALENY & HINTERLAND REAL ESTATE

SALES | PROPERTY MANAGEMENT | COMMERCIAL



41 Obi Vale **NORTH MALENY**



Tucked away down a treelined driveway, on 5638m² in prestigious North Maleny, this cleverly designed home has so much to offer.

- Contemporary, original design
- Central Northern deck overlooking the dam
- Luxury bathroom plus separate powder room
- Bespoke, matching 8m x 9m shed space
- Impressive, low maintenance gardens and landscaping

With superior privacy, the ability to lock it up and leave and only 3 minutes' drive from Maleny township, this property will certainly fulfill many requirements on your wish list.

FOR SALE
Price By Negotiation

INSPECT
By Appointment

Jess Luthje
0438 616 064
jess@malenyrealestate.com



Bunya Lodge 104 Bridge Creek Road **MALENY**



Echoing a bygone era of the grand country estate, Bunya Lodge is set on 25 acres and is ready for its new owner to simply move into this luxury home and start their Hinterland lifestyle.

- Modern, colonial style home with echoes of a bygone era of the grand rural estate
- Quiet, private location just a 4-minute drive to the vibrant town of Maleny
- Just over 25 acres of land this close to Maleny is a rare opportunity
- Grand entrance leading to enviable inclusions
- Separate one bedroom studio

Bunya Lodge offers the discerning buyer everything they could need; a vast living room, a conservatory, a true cook's kitchen, separate guest wing, a separate one-bedroom studio and a terrace wrapped around 3 sides of the house taking in glorious views.

FOR SALE
Price by Negotiation

INSPECT
By Appointment

Rodney Millett
0477 702 073
rodney@malenyrealestate.com



755 Landsborough Maleny Rd **BALD KNOB**



Recently renovated to the highest quality, this much-loved home offers style, space and incredible views to the Glasshouse Mountains, the Sunshine Coast and Brisbane.

- Stylish lowset home elevated perfectly to capture enviable views
- High spec renovation by highly reputed Maleny builder
- Spa-like en suite and main bathroom
- Open plan living, dining and kitchen with views
- Large 4045m² block with huge potential to create your dream outdoor space

Elevated just perfectly, this home will delight its new owners with space to entertain, room to relax or just revel in everyday life.

FOR SALE
Contact Agent

INSPECT
By Appointment and
Open Homes

Rodney Millett
0477 702 073
rodney@malenyrealestate.com



159 Reesville Road **REESVILLE**



Delivering an unforgettable first impression! Immaculately presented and beautifully positioned in the middle of its private 9.95 acre block and only 4 kms from Maleny.

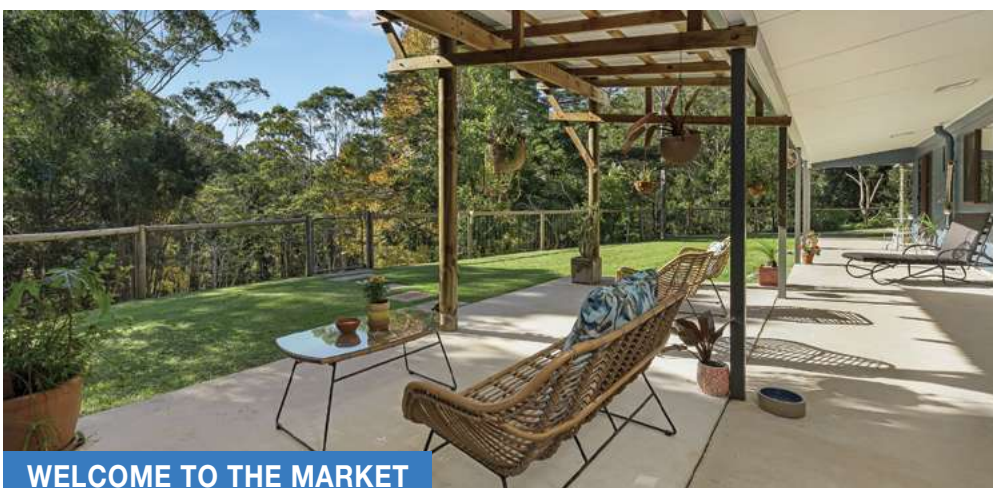
- Immaculately presented home with gorgeous timber features and extra height ceilings
- 6m x 9m entertaining deck with stunning views
- Paddocks with animal shelters
- Separate timber studio
- Extra wide portico plus 14m x 7m lock up garage

Buyers will admire the highly sought-after combination of privacy, convenience and dual living with exceptional entertaining capabilities and irreplaceable views as far as the Glasshouse Mountains.

FOR SALE
Price By Negotiation

INSPECT
By Appointment

Jess Luthje
0438 616 064
jess@malenyrealestate.com



WELCOME TO THE MARKET

246 Bridge Creek Road **MALENY**



On the northern edge of vibrant Maleny, just 2.5kms to town, is this very rare offering of over 5 acres with a stunning rocky creek and little waterfalls.

- Sunny, North facing parcel of mostly treed 5.7 acres
- Comfortable home, with new floor coverings and painted throughout
- Large outdoor entertaining area
- Large shed for car accommodation and workshop
- Stunning rocky creek through the property

This property is a haven for wildlife with the running creek and pristine forest area. It's difficult to imagine just how peaceful and relaxing this beautiful location really is without seeing it all for yourself!

FOR SALE
Price By Negotiation

INSPECT
By Appointment

Jess Luthje
0438 616 064
jess@malenyrealestate.com



1150 Maleny Stanley River Road **BOOROOBIN**



This fabulous country estate set on 49 acres spoils you for choice, whether you're looking to start a hobby farm with cattle and horses, or to simply enjoy as a private haven.

- Recently refurbished and renovated 1940's farmhouse
- Second dwelling with two large bedrooms
- Glorious views down to the dam and its wildlife
- Established income streams; coffee hut and party hire venue
- Access all over the property, a flowing creek and dam and abundant water supply

Large land parcels of this calibre don't present themselves to the Hinterland market often - it offers a clever blend of lifestyle, income potential and natural beauty around every corner.

FOR SALE
Submit Offers

INSPECT
By Appointment

Rodney Millett
0477 702 073
rodney@malenyrealestate.com



This property provides plenty of space for a family or couple.

Your hinterland retreat awaits

PROPERTY OF THE WEEK: 41 Cynthia Hunt Drive, Flaxton. Offers over \$1,800,000

AT the end of a private court via remote gates lies this high quality, spacious, low set home. Located on just over an acre, the fully fenced property is beautifully presented. This home features two huge workshops with fully concreted access; perfect for those with a passion for cars. The property provides plenty of secure parking with a double garage. The outdoor living area is fully covered, overlooks a sparkling resort-style swimming pool, and is perfect for relaxed easy living. This property provides plenty of space for families or couples with four spacious bedrooms, two bathrooms - including an ensuite to the master. The master suite is also complemented by a large walk-in wardrobe, and separate toilet while the other bedrooms all

feature built-in wardrobes. The kitchen is fully equipped with high-end appliances, granite bench tops, and a spacious open-plan living area, plus, another separate living area complete with a fireplace. The property also features ducted cooling and heating. And if you're looking to save on your energy bills, then this house has you covered. It is essentially off-grid, with enough solar panels to never pay for electricity again and with water tanks, you can reduce your bills while doing your bit for the environment. The landscaped block has established fruit, avocado, custard apple, and citrus trees, and a kitchen garden which provides fresh produce.
▶ Contact Tristan Brown from Remax Property Sales on 0403 665 643 or John Tobin on 0478 664 546.



Stylish home, incredible views

AGENT'S CHOICE: 755 Landsborough Maleny Road, Bald Knob

RECENTLY renovated to the highest quality, this much-loved home offers style, space and incredible views to the Glasshouse Mountains, the Sunshine Coast and Brisbane. Elevated just perfectly, this home will delight its new owners with space to entertain, room to relax or just revel in everyday life. Renovations to the house now include gorgeous Sydney Blue Gum polished floors throughout, a true cook's kitchen, wood burning fireplace, multiple entertaining spaces that capture those views, a main bedroom en suite and a spa-like family bathroom with freestanding tub and walk-in shower.



The main bedroom space offers Glasshouse views, a gorgeous en suite with skylight and a walk-in robe.
▶ Contact Maleny & Hinterland Real Estate selling agent, Rodney Millett on 0477 702 073 to arrange your inspection.

Elegant transformation on the perfect acre

AGENT'S CHOICE: 587 Hunchy Road, Hunchy.

HIGH up in the hills of Hunchy is this stylishly renovated family home on a pristine, flat, fully fenced acre, boasting space, privacy, and serenity, along with glorious hinterland views. The home offers generous sized family-friendly living across a light-filled single level. There is an elegant entry, four bedrooms, two fully tiled luxury bathrooms, a sleek designer kitchen, two separate living areas, a covered timber deck off the main living area plus a roofed timber sundeck off the master bedroom, and a double lock up garage with laundry facilities. No expense has been spared and the renovation is stunning.



This is an exceptional lifestyle property in a dress-circle acreage belt where it is rare to find a flat acre; buy today and look forward to embracing gentle living in comfort and style.
▶ To arrange your inspection, contact selling agent Gary De Paoli on 0408 731 412.

CENTURY 21.
Living Local

07 5442 1888 WOOMBYE
07 5441 3366 NAMBOUR



MEET OUR SALES TEAM!

BUYING AND SELLING SHOULD NOT BE STRESSFUL

With 20 years of 'living local' and hundreds of sales on the board, our team knows how to make your real estate experience smooth and seamless. Our sales professionals' communication, transparency and attention to detail are world class.

If you are thinking about selling your property, choose the agency that gives you 121%. Contact US today for a no obligation discussion.

JOSH HALLEY 0408 724 550	KIRK PATRICK 0439 395 599	SHEREE JONES 0493 427 400	IAN BLACK 0407 587 503	DAVID GASKIN 0405 258 765	GARY DE PAOLI 0408 731 412
-----------------------------	------------------------------	------------------------------	---------------------------	------------------------------	-------------------------------



VB Real Estate

FREE Marketing, nothing to pay until the property is SOLD.
Call us today, we have several qualified buyers, waiting to purchase
a home on the Sunshine Coast & Hinterland.

Visit www.vbrealstate.com.au to view further details of the property and video walkthrough.

Vanessa & Cheyne Brunton



28 Tuckers Creek Drive, **NAMBOUR**
4 bedroom 2 bathroom 2544m²
Offers \$800,000



UNDER CONTRACT

247 Delicia Road, **OBI OBI**
5mins to Mapleton Village
10 acres 2 liveable dwellings
spring fed dam fruit orchard \$1.15million



23 Hamptons Place, **MONTVILLE**
1589m² Exclusive LAND Walk to Village
\$595,000



7 Louise Lane, **NAMBOUR**
Triplex Investment
\$925,000



1/11 Sunnyside Court, **MALENY**
4 bedroom 3 bathroom 2 car dual living
Offers \$800,000



Riverbend **YANDINA**
Over 50's 2 bedroom 2 bathroom
\$525,000



Lot 3 Baloo Street, **BURNSIDE**
1262m² LAND
\$425,000



71 Crescent Road, **GYMPIE**
4 bedroom 1 bathroom 2 living areas
High \$400,000



UNDER CONTRACT

2-6 Serene Close, **MONS**
4 bedroom 2 bathroom 5006m²
\$1.4 million



Unit 36/18 Doolan Street, **NAMBOUR**
2 bedroom 1 bathroom 1 car renovated
\$395,000



BUSINESS - LIFESTYLE - OPPORTUNITY

119 Delicia Road, **MAPLETON**
3 bedroom 1 bathroom 4+ car 19 acres
corner block Established Landscaping Business
\$1.9 million



UNDER CONTRACT

23 Stevens Street, **YANDINA**
3 bedroom 2 bathroom 4 car 2108m²
\$900,000

We have donated \$1k and set up a go fund me page for Rachel Aspinall Hinterland Wildlife Carer to put towards planting 500 koala food trees in Mapleton. We will continue to donate \$100 for every property sold.



Vanessa & Cheyne Brunton

0467 448 850



vanessa@vbrealstate.com.au • www.vbrealstate.com.au



Charming home in the heart of Nambour



AGENT'S CHOICE: 12 Florence Street, Nambour. Auction on site Saturday, July 1 at 10am.

THIS charming three-bedroom home in Florence Street is well-equipped for first home buyers. It features open living spaces filled with natural light, under-house storage and a family pool out the back. This terrific property offers comfortable living and has great potential to add value down the track.

As you enter through the covered patio you'll immediately appreciate the abundance of natural light that fills the living, dining, and family spaces.

Polished hardwood floors and large awning windows create a sense of spaciousness and airiness, making rooms feel welcoming and bright.

The kitchen features a gas-stove, plenty of cupboards and room to spread out when cooking with the abundance of bench space. Whether you're preparing a quick meal or hosting friends for dinner, this kitchen makes it work. The fully fenced yard has the benefit of small side access, room for the kids to play, a garden shed, and centres around the large above ground swimming pool.

Located in the heart of Nambour, the position offers convenience and proximity while maintaining the quiet aspect of the street. Just around the corner are popular coffee shops, the train station, and the Nambour CBD.

► To sell on or before Auction day. For more information, please contact Ray White Nambour's Michael Scott on 0488 969 970 or Ryan Aldred on 0418 849 558.

Four bedroom home on over half an acre

AGENT'S CHOICE: 28 Tuckers Creek Drive, Nambour. Offers in the \$800,000 range.

THIS 28 Tuckers Creek Drive Nambour home is ready for new owners and offers an opportunity to secure a privately situated, modern and spacious 4-bedroom home with two bathrooms (ensuite and walk-in robe to main bedroom).

The home boasts reverse cycle airconditioning, a double remote garage, laundry, and huge storage space.

The land is over half an acre (2,544m²), backing onto Duhs Road and plans are available to build the second dwelling.

Views and nature in your backyard provide privacy and a peaceful setting to enjoy entertaining family and friends.



► Contact Vanessa Brunton of VB Real Estate on 0467 448 850 to be the first to inspect and secure this unique property. All offers in the \$800k range will be seriously considered.



Let us help you create your dream garden

With the largest range of quality products at prices to suit all budgets

- Friendly service & advice
- Browse and shop online
- On time delivery guarantee



Contact our friendly team for more information or to order

COASTAL LANDSCAPE SUPPLIES

GET YOUR ROCKS OFF... US

07 5453 7100 18 Kerryl St, Kunda Park

www.coastallandscape.com.au | kylie@coastallandscape.com.au

BARK & MULCH | SOILS | GRAVEL | PEBBLES | SAND | SANDSTONE | ROCKS | ROADBASE | TURF | TIMBER | PAVERS | PLUS MORE!



HILLSIDE
MOOLOOLAH VALLEY

SECURE YOUR SLICE OF HINTERLAND PARADISE AND MOVE IN SOONER!

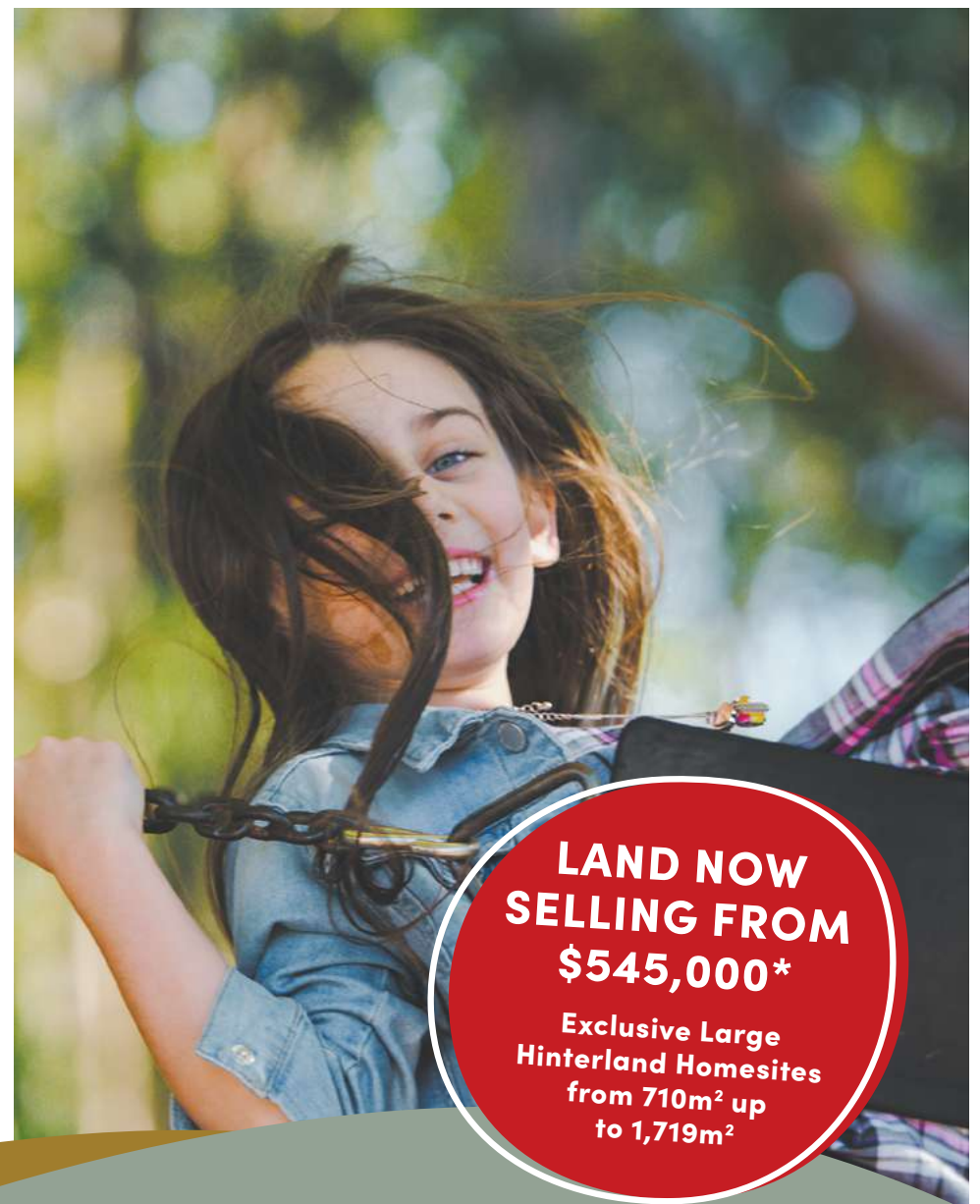
Exclusive Large and Premium Homesites Now Selling.

- Two new large lot land releases scheduled to title late November, allows you to lock in the build price, secure finance and move in sooner!
- Spacious 710m² lot sizes up to a remarkable 1,719m² starting from \$545,000 up to \$680,000*
- Perfectly positioned large, elevated, level lots within a secluded hillside location
- Surrounded by nature in the picturesque hills of the Mooloolah Valley
- Minutes to the quaint Mooloolah Village centre, state school and Dulchura National Park
- A short drive to Caloundra and Sunshine Coast CBD

Embrace the Sunshine Coast Hinterland lifestyle. Your perfect location awaits!

SALES OFFICE OPEN
visit hillsidemooloolahvalley.com.au or call 1300 556 950

*Information is correct at distribution and subject to change without notice. No warranty is given in respect of the accuracy of the information in this advertisement and any intending purchasers should make their own enquiries in relation there to. Illustrations and all other photographic depictions are for presentation purposes only. Av. Land Price \$576,000.



LAND NOW SELLING FROM \$545,000*

Exclusive Large Hinterland Homesites from 710m² up to 1,719m²

urbex *designed for life*

Look Local Trades & Professional Services

Water Services

HW WS SEPTIC PUMP OUTS
Hinterland Waste Water Services
Peter
0428 723 082
hwws@bigpond.com

HPS
Hinterland Pump Services
Glasshouse to Gympie
Murray
0416 256 536

Professional Services

Hinterland ACCOUNTANTS + ADVISORS
Supporting local business with
Accounting and Tax
BAS and GST
Financial Statements
SMSF and Superannuation
Planning and Business Structuring
Business Purchase and Sale
1/13 Turner St, Beerwah
5439 0188 | admin@hintertax.com.au

innov8
ACCOUNTING & ADVISORY
Accounting
Business Advisory Services
Tax Return Preparation
Company, Trust, Partnership, Individual
Self-managed Super Funds
5442 1234
info@innovateaa.com.au
www.innovateaa.com.au
4 Pinegrove Rd
Woombye

Auto Services

CARAVANS
WE BUY,
SELL
AND
CONSIGN
P: 0408 758 688

Septic Cleaning

Sutton's CLEANING SERVICE

- SEPTIC SYSTEM *Locally Owned & Operated Since 1980*
- TREATMENT PLANTS
- GREASE TRAPS
- HYDRO EXCAVATION
- LIQUID WASTE
- COMMERCIAL & DOMESTIC

P 5447 6477
www.suttonscleaning.com.au

Blinds Awnings

Servicing The Sunshine Coast For Over 30 Years
INDEPENDENT
BLINDS & AWNINGS
0411 872 060
Ziptrak & Zipscreen • Blinds & Awnings
Clear PVC Blinds • Plantation Shutters
Security Doors & Screens
Call us today for a free measure and quote!
www.independentblindsandawnings.com.au
QBCC No. 1096933

Concreting

CONCRETING & LANDSCAPING
ALL AREAS
• Footpaths • Driveways • Slabs • Stencil
• Stamped • Concrete Saw Cutting
• Exposed Aggregate • Plain • Bobcat
• Excavator & Truck
• Quality work at affordable rates
• Free Quotes & Free Advice Anytime
• Credit Cards
Ph Guy 0416 202 044
www.concretecontrol.com.au
QBCC Lic no. 1129605

Hose Fitting

AUTOELECTRICS QLD
& Mechanical
Air Conditioning
Mechanical Repairs
Auto Electrics
Log Book Servicing
227 Nambour Connection Rd, Woombye
autoelectricssld.com.au
5442 2278

Hose Fitting

SUNSHINE COAST
HOSE & FITTINGS
MOBILE HOSE SERVICE

SERVICES INCLUDE
24/7 BREAKDOWN SERVICE
PLANNED MAINTENANCE & SHUTDOWN WORK
HYDRAULIC & INDUSTRIAL HOSE AND FITTINGS
FLUID TRANSFER, STORAGE AND METERING
PUMPS AND REELS
HYDRAULICS
PNEUMATICS
LUBRICATION
REFUELLING
0408 220 503 24/7 MOBILE SERVICE
sunshinecoasthoseandfittings.com.au schf@outlook.com.au
KUREELPA
Sunshine Coast

Plumber

WOOMBYE PLUMBING
30 Years Experience
RURAL PLUMBING SPECIALIST
• RAINWATER TANKS & INSTALLATION
• DRAINAGE
• MAINTENANCE
• EXCAVATOR HIRE
HAYDEN KITHER
0490 308 785
hayden@kitherplumbing.com
135 OLD PALMWOODS ROAD, WEST WOOMBYE

Rubbish Removal

2-GO Clear-Space !!
RUBBISH (ANYTHING) REMOVAL
Fridges, Beds, Mattresses, Lounges, including clutter
FREE QUOTES
Small Clutter or Full House Clearances
The Clear-Choice !!
CALL NOW 0477 772 138

Painter

Shane Nolan
Painting & Decorating
Keeping the Hinterland Beautiful
All Aspects of Painting
Interior Exterior - New & Old
• Repaints • Restoration
• Decorative Features
• Wall Papering
0403 245 109
FREE QUOTES
shanenolan66@gmail.com
BSA 1016510

Landscaping Services

WOODCHIP / FOREST MULCH
\$25 per cubic metre + GST
(8 cubic metres minimum delivery)
54 459921 or 0412 586 131
We also provide complete tree services including pruning, removals & consultancy


Pest Control

ARCHERS TERMITE & PEST CONTROL
WHEN ONLY THE BEST WILL DO
✓ Termite Barrier & Warranty
✓ Termite Inspections
✓ 30 Years' Experience
0455 775 512
archers4termites.com.au

Electrician

ACW Electrical Pty Ltd
Lic. No. 78020
Small Job Specialist
Quality Workmanship on Domestic Installations & Repairs
40 Years Experience
M: 04 27 170235

Gutters

PLUMBLINE
FASCIA & GUTTER
GUTTER REPLACEMENTS
GUTTER REPAIRS & MAINTENANCE
GUTTER GUARD INSTALLATION
REPLACE & ADD DOWNPIPES
METAL FASCIA REPAIRS
FULLY LICENSED AND INSURED
0407 603 377
www.plumblinelinegutters.com.au

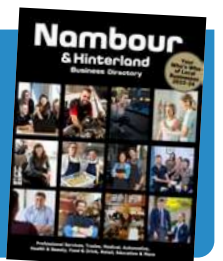
Renovations / Extensions


Sunset Homes and Designs
With over 25 years of building experience
0455 869 699
Home Renovations and Extensions
Bathroom and Kitchen Renovations
Repairs and Maintenance
Call for a free consultation and quote
Locally based on the Sunshine Coast
QBCC LIC NO: 15184818

Cast a wide net in the Gazette ... & now also in the ...

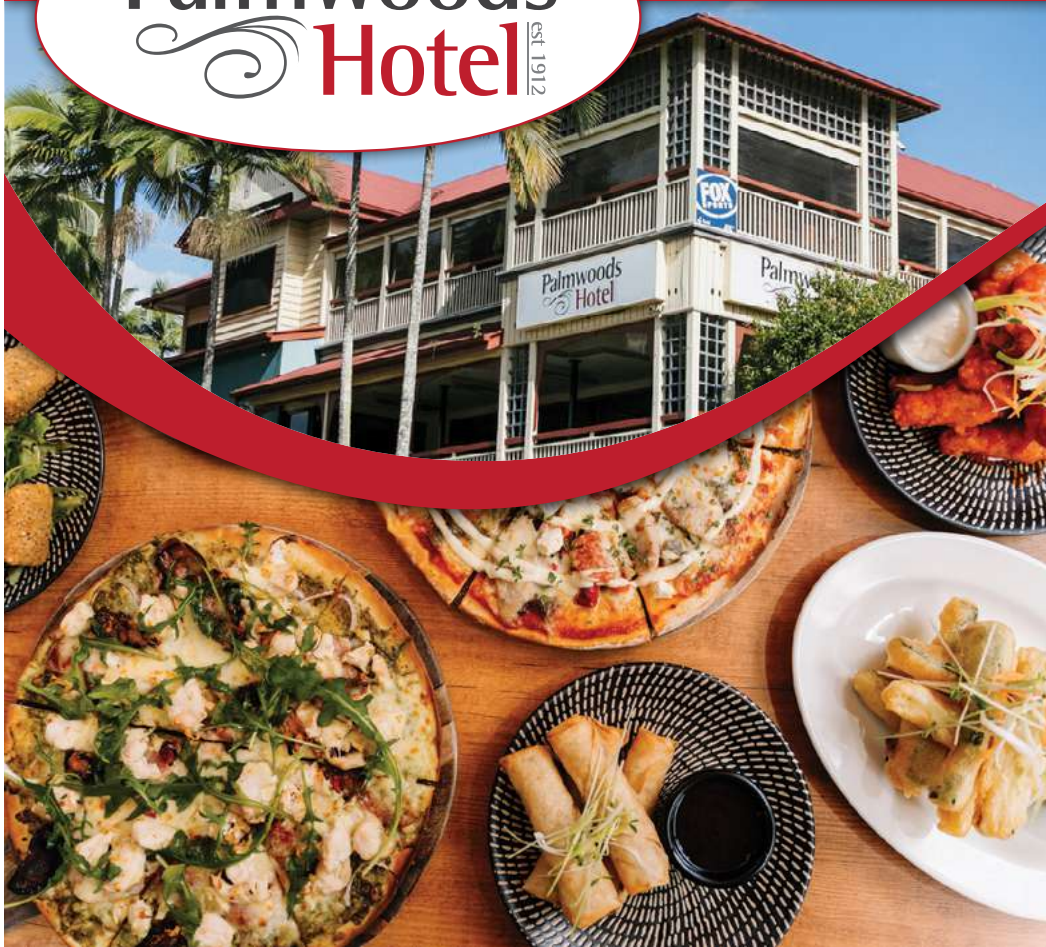
Nambour & Hinterland Business Directory

In order to reach a local audience you need to cast a wide net. Advertise in Look Local Trades & Services & reach ... 20,000 local readers a fortnight. Advertise in *The Nambour & Hinterland Business Directory* and stay in touch with your customers ALL YEAR. See the ad for the brand-new Directory in this edition or Phone Tanya on 0400 069 711 to reserve a place.



Palmwoods Hotel est. 1912

EXPERIENCE THE LEGEND



FLANDERS BAND
SATURDAY 1ST JULY



VENUS ENVY
SATURDAY 15TH JULY



BAD HABITS
SATURDAY 19TH AUGUST



TUESDAY NIGHTS
PARMIGIANA NIGHT

From **\$21**

choose from 10 different toppings All served with chips and salad

MEMBERS Mega JACKPOT
\$20,000 CASH

UP FOR GRABS

- \$10,000 GRAND PRIZE
- \$3,000 MAJOR PRIZE
- \$1,000 MINOR PRIZE
- PLUS MINI CASH PRIZES

\$4500 up for grabs in our Saturday Cash Frenzy*

DRAWN SATURDAY 1ST JULY FROM 2PM MUST BE PRESENT TO CLAIM PRIZE

PLAY ANY OF OUR POKE MACHINES AND RECEIVE A \$50 OR MORE WIN WITH YOUR MEMBERS CARD INSERTED TO GET A TICKET INTO THE VIRTUAL BARREL

Terms & Conditions Apply. Must be a member of Bayline Rewards program. See Staff for Details.

28-34 MAIN STREET PALMWOODS | BOOKINGS ESSENTIAL | 1300 PALMWOODS | WWW.PALMWOODSHOTEL.COM.AU |

WIN
A TRIP TO THE NRL GRAND FINAL

\$43.99 EACH

BUNDABERG UP RUM
700ML

\$44.99 EACH

BUNDABERG UP RUM & COLA 4.6% VARIETIES
10 X 375ML CANS

SPEND \$20 ON ANY BUNDY PRODUCT FOR YOUR CHANCE TO WIN. ENTER ONLINE AT BOTTLEMART.COM.AU

TERMS AND CONDITIONS APPLY. SEE WEBSITE FOR DETAILS.

WIN
A DOUBLE PASS TO THE BRONCOS VS EELS GAME

TERMS AND CONDITIONS APPLY. SEE WEBSITE FOR DETAILS.

\$52.99 EACH

GREAT NORTHERN SUPER CRISP
24 X 330ML BOTTLES OR CANS

HOT PRICE
\$52.99 EACH

HAHN SUPER DRY 3.5%
30 X 375ML CANS

\$49.99 EACH

GORDON'S PINK GIN, JACK DANIEL'S TENNESSEE WHISKEY, FIREBALL CINNAMON WHISKY OR DIMPLE 12YO SCOTCH WHISKY
700ML

BEERWAH CELLARS - BEERWAH
SHOP 11, BEERWAH MARKETPLACE PEACHESTER RD TEL 5494 0477

BEERWAH DRIVE THRU - BEERWAH
MAWHINNEY STREET TEL 5494 0555

GLASS HOUSE CELLARS - GLASS HOUSE MOUNTAIN
SHOP 5, 9 BRUCE PARADE TEL 5493 0188

\$47.99 EACH

COOPERS DRY
24 X 355ML BOTTLES OR 375ML CANS

\$48.99 EACH

POWER'S LAGER
24 X 330ML BOTTLES

\$43.99 EACH

CAPTAIN MORGAN SPICED GOLD OR SMIRNOFF RED VODKA
700ML

\$49.99 EACH

WILD TURKEY & COLA 4.8%
10 X 375ML CANS

WIN
A TRIP FOR 2 TO LOUISVILLE, KENTUCKY TO ATTEND BOURBON & BEYOND

TERMS AND CONDITIONS APPLY. SEE WEBSITE FOR DETAILS.

SAVE \$8
ANY 2 FOR \$20

AMONGST THE CLOUDS LANGHORNE CREEK SHIRAZ OR YALUMBA Y SERIES WINES
750ML

ANY 2 FOR \$24

JACOB'S CREEK RESERVE WINES
750ML

SAVE \$5
\$19.99 EACH

WIRRA WIRRA MVCG CABERNET SAUVIGNON, GEMTREE BLOODSTONE ORGANIC SHIRAZ, ARGENTO CLASSIC MALBEC OR ROBERT OATLEY SIGNATURE SERIES CHARDONNAY
750ML

PALMWOODS CELLARS - PALMWOODS
SHOP 5, 18-20 MARGARET STREET TEL 5445 9266

PALMWOODS DRIVE THRU - PALMWOODS
28 MAIN STREET TEL 5445 9003

START AT
Bottlemart

BOTTLEMART.COM.AU

Choose to **Drink Wise.**

All specials available from Wednesday 21st June until Tuesday 4th July 2023. Images are for illustrative purposes only. Specials available only in the state of Queensland. Prices may vary in country and far North Queensland. Different pack sizes and variants may not be available in all stores. Bottlemart supports the responsible service of alcohol.

QLD_P13_HP_SVG

FOR SALE	NAMBOUR	FOR SALE	PIE CREEK	NAMBOUR	FOR SALE	SOUTHSIDE	FOR SALE	GYMPIE
								
107 CURRIE STREET	51 LAWSON ROAD	7 MOUNT PLEASANT ROAD	41 FURNESS ROAD	RESIDENTIAL LAND FOR SALE				
COMMERCIAL	4 2 5 6,000m ²	3 1 1 615m ²	4 2 3 VILLA	LOT 30 723m ²				
Peter Wrigley: 0407 374 349	Warren Nonmus: 0431 210 348	Andy Sharma: 0410 989 177	Warren Nonmus: 0431 210 348	Andy Sharma: 0410 989 177				





Blackall Terrace Dental

N A M B O U R

New patient welcome offer

TOTAL: \$199 or NO-GAP!

Call to book or go online
(07) 5441 3583
blackallterrace.com.au

- Comprehensive exam
- Oral cancer screening
- Intraoral photography
- All necessary x-rays
- Scaling & polishing
- Topical fluoride
- Treatment planning



Scan to book your next visit.






*New patients only. T&Cs available online. Valid to 30.03.23.

ROVER RIDE ON MOWERS HUMM90 & ZIP PAY 60 MONTHS INTEREST FREE NO DEPOSIT ON ALL ROVER RIDE ON MOWERS

FREE LOCAL DELIVERY • COMPLEMENTARY 4 LITRES OIL (2 LITRES "RIDER MODELS") FOR 1ST SERVICES

<p>24" DECK</p> <p>30" DECK</p> <p>5+5 WARRANTY</p>  <p>SALE</p> <p>RIDER</p> <p>24" ROVER MICRO RIDER RRP-\$2,999 \$2,999</p> <p>30" MINI RIDER 6 SPEED MANUAL RRP-\$3,299 \$2,999</p> <p>30" MINI RIDER HYDRO RRP-\$3,799 \$3,499</p>	<p>38" DECK</p> <p>UP TO 2 ACRES</p> <p>5+5 WARRANTY</p>  <p>RAIDER</p> <p>38" ROVER RAIDER RRP-\$3,999 \$3,799</p> <p>RANCHER</p> <p>38" ROVER RANCHER AUTODRIVE RRP-\$4,099 \$3,999</p>	<p>42" DECK</p> <p>UP TO 3 ACRES</p> <p>5+5 WARRANTY</p>  <p>RANCHER LAWNKING</p> <p>42" ROVER RANCHER HAND HYDRO RRP-\$4,499 \$4,199</p> <p>42" ROVER LAWNKING KAWASAKI ENGINE 18HP RRP-\$5,299 \$4,999</p> <p>42" ROVER LAWN KING KAWASAKI ENGINE 21HP AUTO DIFF LOCK RRP-\$6,099 \$5,899</p>	<p>42" DECK</p> <p>46" DECK</p> <p>5+5 WARRANTY</p>  <p>ZERO TURN</p> <p>42" ROVER RZ42 ZERO TURN RRP-\$6,999 \$6,299</p> <p>46" ROVER RZ46 ZERO TURN RRP-\$7,999 \$7,299</p>
--	--	---	--

Cub Cadet CUB CADET RIDE ON MOWERS HUMM90 & ZIP PAY 60 MONTHS INTEREST FREE NO DEPOSIT ON ALL CUB CADET RIDE ON MOWERS

FREE LOCAL DELIVERY • COMPLEMENTARY 4 LITRES CUB CADET OIL FOR 1ST SERVICES

<p>ELECTRIC CUB CADET RIDE ON MOWERS</p> <p>BOTH WITH 6 YEAR WARRANTY INC BATTERIES.</p> <p>6 YR WARRANTY</p> <p>30" CUTTING DECK</p> <p>ELECTRIC POWER</p>  <p>CC 30 E RRP-\$6,499 \$6,299</p> <p>6 YR WARRANTY</p> <p>42" CUTTING DECK</p> <p>ELECTRIC POWER</p>  <p>LT 42 E RRP-\$9,999 \$9,499</p>	<p>3 YR WARRANTY</p> <p>SYNCHRO STEER</p> <p>SALE</p>  <p>ZTS1</p> <p>42" FABRICATED DECK RRP-\$8,799 \$7,599</p> <p>46" FABRICATED DECK RRP-\$9,499 \$8,499</p> <p>4 WHEEL STEER</p> <p>Z FORCE</p> <p>48" FABRICATED DECK RRP-\$13,799 \$12,599</p> <p>54" FABRICATED DECK RRP-\$13,999 \$12,999</p>	<p>42" & 46" TRACTORS</p> <p>XT1 42 RRP-\$4,999 \$4,499</p> <p>LX42 XT1 KAWASAKI 24 HP V TWIN RRP-\$6,999 \$6,699</p> <p>LX42 XT2 FUEL INJECTION ENGINE AUTO DIFF LOCK FREE POLY TRAILER RRP-\$6,999 \$6,999</p> <p>LX46 679CC AUTO DIFF LOCK RRP-\$7,399 \$6,999</p> <p>ZT1 42" STEEL DECK RRP-\$7,399 \$6,999</p> <p>46" FABRICATED DECK RRP-\$8,499 \$7,999</p> <p>ZT2 54" FABRICATED DECK RRP-\$9,899 \$9,299</p> <p>ZTX5 48" FABRICATED DECK RRP-\$13,999 \$13,499</p> <p>54" FABRICATED DECK RRP-\$14,899 \$14,399</p> <p>60" FABRICATED DECK RRP-\$15,899 \$14,999</p>	<p>3 YR WARRANTY</p> <p>ZERO TURN</p>  <p>PRO Z</p> <p>PRO Z 1485 RRP-\$16,399 \$15,299</p> <p>PRO Z 1545 RRP-\$16,899 \$15,799</p> <p>PRO Z 5605 RRP-\$24,599 \$22,999</p> <p>PRO Z 760 RRP-\$26,999 \$25,499</p> <p>PRO Z 9725 RRP-\$30,299 \$27,999</p> <p>972 SD DUAL WHEELER RRP-\$33,999 \$29,999</p> <p>972 SDL DUAL WHEELER RRP-\$35,999 \$32,999</p> <p>BEACON BUT NO LIGHTS SELF LEVELLING SEAT</p>
---	--	--	--



North Coast MOWER CENTRE

Ph: 07 5441 5455 | 36 Coronation Ave, Nambour
www.northcoastmowercentre.com

Mon - Fri: 8am - 5pm
Sat: 8am - 12pm