

# SUNSHINE VALLEY Gazette

August 16, 2023 | Edition 283 | 10,000 Copies Fortnightly | www.SVGazette.com.au | editor@SVGazette.com.au

**SOLD**  
252 Yandina Coolum Rd,  
Coolum Beach

**NEV KANE**  
Real Estate since 1953

5446 7333 | nevkane.com.au



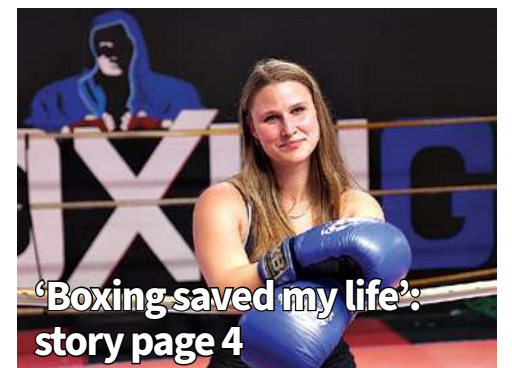
Boxing coach's formula for giving youths a:

## Fighting chance

STORY PAGE 5



Abuse survivors' brave warning to others: page 3



'Boxing saved my life': story page 4



Maleny golfer scores two holes-in-one: page 9

Town prepares for unique celebration

# Yandina Street Fair

YANDINA is gearing up for a grand celebration of its unique community spirit at the highly anticipated Yandina Street Fair.

The family-friendly event on Sunday, August 20 from 11am to 7pm, promises a day of joy, entertainment, and a true reflection of Yandina's identity.

Attractions include a Sizzler, Super Slide, Cup & Saucer, Jumping Castle, RockWall, Face Painting, Glitter Nails, Petting Zoo, Roving

Puppeteers, Stilt Walkers, Caricature Artist, Stephen Hollis as 'Silver Steve' the street performer and a Magician.

There will be culinary delights from various food trucks, a range of local artisan stalls and live performances from talented local artists and community groups.

The Yandina Street Fair holds a special place in the heart of the community, serving as a celebration of its identity and unity.

The fair returns after four years providing attendees with an opportunity to revel in the town's rich history and bright future.

The event aims to foster a sense of pride and encourage residents to cherish their community.

The Fair's program boasts a lineup of captivating entertainment, featuring live performances across three stages.

To Page 2



George & Aldy's Secrets on the Lake Cafe: page 14

**WOOMBYE VETERINARY SURGERY**

**VET**

5442 2000

Dr Charlotte Ashton-Heinius B.V.Sc

23 Blackall Street Woombye

**SUNSHINE STEERING**

Straight up front.

RTA No. AU49451

David & Tina Ledger

P 5478 8020  
F 5478 8850

Power Steering • Suspension • Wheel Alignments  
Child Restraints • Roadworthy Inspections  
Tyre & Balancing • All Mechanical Service & Repairs  
Air Conditioning • All Brake Repairs  
We also sell nuts, bolts and tyres.

4/27 Main St, Palmwoods, Qld 4555

**Sunstate Gearbox & Diff Service**

Specialising in:

- Manuals
- Differentials
- Automatics
- Tailshafts
- Transferscases
- Clutches

**OBLIGATION FREE APPRAISAL**

5 Charles Court, Kunda Park

Ph: (07) 5476 8911

www.sunstategearbox.com.au

Wax Removal  
Hearing Assessments  
Tinnitus Management  
Hearing Aids

**Sunshine Coast Audiology**

Call 07 5378 2226

Emryn Maclachlan  
Anita Burgess

Shop 10, 1 Scholars Drive, Sippy Downs  
www.sunshinecoastaudiology.com.au

**BUY • RENT • SELL**

50 Lowe Street, Nambour | RE/MAX Property Sales & Rentals | outstandingagents@remax.com.au | 07 5470 7000

# SUNSHINE VALLEY Gazette

**Editorial**  
If it matters to you, it matters to us. Send your news to Cameron Outridge 0409 424 487 editor@sunshinevalleygazette.com.au

**Advertising**  
To advertise contact Tanya Outridge 0400 069 711 tanya@sunshinevalleygazette.com.au

**Designer**  
Katie Buckley: katiebuckley@live.com

**Distribution**  
10,000 copies are distributed to popular pick-up points throughout the hinterland including at Palmwoods, Woombye, Nambour, Chevallum, Eudlo, Mooloolah, Hunchy, Yandina, Maleny, Montville, Flaxton, Mapleton and Forest Glen.

**Gazette in Print, Email, Online & Facebook**  
The Gazette is Printed Fortnightly & Online Always. A pdf form of the printed paper can be found on our website. Stories are also posted on Facebook, on our blog and via email to our subscribers.

**Editorial Policy**  
Every endeavour is made to publish submissions but we can never guarantee that any article will definitely appear. We prioritise constructive news which strengthens the community fabric. Our broad aims are to:  
• Connect the Community.  
• Acknowledge Achievement.  
• Back Business.  
We encourage respectful & constructive debate on local issues in our letters section.

**Thanks to our Advertisers**  
The Gazette is completely funded by our advertisers who make community journalism possible. Without them, there would be no paper. Please support them and let them know you found them in the Gazette.



The free family-friendly event is on Sunday, August 20, from 11am to 7pm.

## Yandina Street Fair is back

From page 1

Highlights include a Welcome to Country, the Caledonian Pipes and Drums, the storytelling of Noel Stallard OAM, and musical showcases by Nambour State College students, Mayah & Band, Escape Plann, Pretty Jesus, Trilions, Million Johnny's, Flaskas, Demi Casha, Ausphonic, Tony Casley, Johnny Curran, Stu White, and so much more.

Yandina QCWA will host a charming tearoom featuring homemade preserves and baked goods, craft and plant stalls and raffles. The Grand Finale will be a performance by Skyfall Entertainment involving Fire, Light & Special Effects. State Member for Nicklin Robert Skelton congratulated the organising committee. "It's going to be a great day, my team and I will be there handing out some goodies, so make sure you come by and say hi."

Street Fair committee chairman Greg Corbin said the Street Fair served as a vital contributor to the local economy.

"We expect 5000 plus visitors will attend the much anticipated return of the Traditional Street Fair," he said.

"Now in it's 43rd year, we invite everyone to come along to the Yandina Street Fair and be part of a proud celebration of the community and business of Yandina & Districts."

• Admission is free. Parking along the town's side streets. See www.facebook.com/yandinastreetfair/.



Art teacher Annie Chew, left, with Naomi James of Freedom Studios in Ann Street Nambour.

## Filling the creative void

### Studio art classes for people with disabilities

by Janine Hill

AN art studio in the heart of Nambour is helping to fill a void for people with disabilities.

Freedom Studios offers art classes for people with disabilities, supported by the National Disability Insurance Scheme (NDIS).

Naomi James and art teachers Annie Chew and Bella Groat help students explore and experiment in a wide choice of creative pursuits.

The art and craft menu includes acrylic painting, mosaicking, woodwork, macrame, sculpture, papier mache and more.

Naomi established the studio as a small business three years ago, later moving it into Ann Street premises.

"We started with just two tables. Now we have seven tables so we can offer more opportunities for more people," Naomi said.

"I was studying social work at uni at the

time and wanted to work in the disability area. I decided to combine my passion of arts and crafts with disability work and came up with the idea," she said.

"I just saw that there was a need for artistic opportunities for the disability community, and there wasn't much for them to do.

"I wanted to create a community space where people could come and make art and make friends.

"It's really a place to bring people together and where they can explore their creative side."

Naomi said art could benefit mental health and help people experiencing anxiety and depression.

Two hour classes are held at Freedom Studios every morning and afternoon from Monday to Friday. Class numbers are limited to 10.

► Phone 0478 078 462. 3/20 Ann Street, Nambour.



Mika and Riye Arai-Coupe, and Kim Coupe have broken their silence to put their abuser in jail and are encouraging others to come forward and get help. - Pic supplied

## Survivors shine light on issue, bring justice to their abuser

### Fears he may have also preyed on girls in Mapleton & Maleny

by Janine Hill

IT took over 30 years but justice has finally caught up with John Richard Daniel Voronoff.

The 77-year-old was sentenced on 31 July to seven-and-a-half years jail for child sex offences dating back to the late 1980s and early 2000s.

Voronoff found himself in the Maroochydore District Court thanks to four women, Riye Arai-Coupe, 37, her younger sister Mika, 34, friend Phoebe Staggard, 42, and Mika's childhood best friend Ebony-Rose Greene, 34, who were determined to hold him accountable for crimes committed against them as children.

The identities of sex offence victims cannot normally be published under Queensland law but the four women have identified themselves to publicise the case.

Riye was seven and Mika three when Voronoff, who was in a relationship with their mother, began his abuse against them.

Their mother did not learn of the abuse until afterwards and although they discussed reporting it to police, they did not go ahead until 2021.

"It took me a long time to build up the courage to report it. Our family has always been here for each other, and while it took me 25 years, I am so proud that we finally did this, Riye said.

"It's been confronting but has also given me a lot of closure."

The girls were living in the Cooran, Traveston and Kin Kin areas when they were abused by Voronoff but Riye believes he may have had access to children elsewhere on the Sunshine Coast, including Mapleton or Maleny, where Riye believes he has been in other relationships.

"Over the years, we've learnt he had a reputation of going from woman to woman that had young children," she said.

"We have come forward publicly to let the community know what happened. For anyone out there considering doing the same, we hope that they can take strength from the fact that



John Richard Daniel Voronoff, 77, pled guilty to 24 charges relating to the sexual abuse of children. - Pic supplied.

we have and we've been able to do something about it."

Riye is a mother and a businesswoman but has lived with trust and intimacy issues as a result of Voronoff's abuse and events in everyday life can still trigger the trauma.

"But you can still get on and enjoy your life," she said.

"As a result, I've become a very resilient person and I'm fortunate that I'm now able to talk about it with a level of detachment."

Voronoff pleaded guilty to 24 charges of indecent treatment charges and one of maintaining a sexual relationship with a child. He will be eligible for parole on 31 January, 2026.

Riye hoped the case would teach other child abusers that their crimes could catch up with them at any time.

Coming forward has been difficult but also empowering for her and she hoped it would help other victims.

"For me, personally, it's also about giving others the strength in whatever shape or form I can, to shine a light on something that's often considered to have a stigma or be taboo," she said.

"The more we can talk about it, the more we shed light on it, the better it is for others."

Riye is willing to share her experience of the process with other victims and can be contacted on 0422 684 454.

**The Denture Care Group**  
Sunshine Coast  
Caloundra | Maleny | Woombye

**MAKE THE MOST OF YOUR HEALTH FUND THIS YEAR**  
**CONTACT US TO FIND OUT HOW**

Book a Consult with us this month so we can help you get the most out of your benefits and have you leave smiling.

**P 07 5442 1721**  
**HINTERLAND VIEW DENTAL 6 Hill Street, Woombye**  
denturecaregroup@gmail.com

## DO YOU VALUE YOUR TEETH?

**Healthy Teeth, Healthy Smile**

At Hinterland View Dental we will look after you.

- Locally Owned and Operated
- Experienced and Friendly Staff
- Serene Environment

**30% OFF**  
All Check Ups and Cleans

Complementary Orthodontic and Cosmetic Consultations

www.hinterlandviewdental.com.au  
6 Hill St, Woombye (opposite the Woombye Bowls Club)  
**Call 5442 2378**

# WHITE'S IGA

## Where community and great food comes together

Every White's IGA store is stocked to meet the needs of our community. With locally sourced food that nourishes the body and an assortment of options to suit every shopper, our stores are made for you.

We invite you to browse the aisles, explore the products and chat to our team of local foodies - we'd love to see you.

"We want you to feel welcome every single time you step through the door. That means we pay attention to the little things. Your favourite products on the shelves, a friendly smile at the check out, and the best possible prices - our team is here to help."  
Roz & Michael White

Have your say at IGA

Tell us about your shopping experience for your **Chance to WIN \$100**

WHITE'S IGA BLI BLI | MT COOLUM | PEREGIAN BEACH | MOOLOOLAH | BARINGA | FOREST GLEN **OPEN NOW**

# Community GIVE BACK SALE

LOOK FOR PRODUCTS WITH THIS LOGO TO HELP US GIVE BACK TO LOCAL CAUSES

**\$2.25** ea  
SAVE \$2.25

Arnott's Chocolate Biscuits 160-250g Selected Varieties

**\$1.35** ea  
SAVE \$1.35

John West Tuna 95g Selected Varieties \$14.21 per kg

**1/2 PRICE**

**\$1.77** ea  
SAVE \$1.78

Coca-Cola, Spire or Fanta 1.25 Litre Selected Varieties \$1.42 per Litre

**\$4.75** ea  
SAVE \$4.75

Connoisseur Gourmet Ice Cream 4-6 Pack Selected Varieties

On Sale Wed 16th Aug to Tue 22nd Aug 2023.

## Earthmoving • Cranes • Trucks • Hydraulics • Attachments

**GR FLEET SERVICES**  
DIESEL MAINTENANCE & REPAIRS

We service and repair all makes of earthmoving machinery, cranes and trucks.

From Warranty Servicing to hydraulic hose repairs **we have you covered.**

**FULLY EQUIPPED WORKSHOP + FIELD SERVICE**

Authorised Dealers

169 Nicklin Road, Palmwoods • 5457 3066 • grfleet.com.au

**NOTIFICATION OF TEMPORARY ROAD CLOSURES**  
 PURSUANT TO TEMPORARY EVENT PERMIT TE23/0175  
 ISSUED BY SUNSHINE COAST COUNCIL FOR THE  
**YANDINA STREET FAIR**  
 ON SUNDAY 20th AUGUST 2023  
 BETWEEN THE HOURS OF 6.00AM - 7.30PM  
**STEVENS STREET (FARRELL STREET TO CONN STREET), RAILWAY STREET (STEVENS STREET TO LOW STREET), & LOW STREET (RAILWAY STREET TO FARRELL STREET) WILL BE CLOSED TO VEHICULAR TRAFFIC OTHER THAN EMERGENCY VEHICLES.**



Mapleton launches survey to address parking concerns

THE Mapleton & District Community Association (MADCA) has taken steps to tackle the growing concerns surrounding parking issues in the village. With the aim of improving the parking situation and supporting local businesses, MADCA has initiated a parking survey that will run through August.

"There are community concerns that insufficient parking in the village is negatively impacting local businesses and customers," said MADCA spokesperson Wendy Turton.

MADCA says that by understanding the parking dynamics in the community, informed decisions can be made to improve parking infrastructure and enhance the overall livability of Mapleton.

MADCA is running an online parking survey to raise awareness of the issue and lobby for easier, safer parking.

"We will also have paper copies at the Mapleton Country Market on August 26," said Wendy. "We need help to spread the word because someone is sabotaging our efforts by removing our flyers from the community noticeboards."

► **For more information about this survey go to: [www.madca.com.au/news/parking.html](http://www.madca.com.au/news/parking.html) | [www.madca.com.au | enquiries@madca.com.au](http://www.madca.com.au/enquiries@madca.com.au).**

**NAMBOUR wesleyan METHODIST CHURCH**

**SUNDAY SERVICES 9AM**  
 165 Perwillowen Rd, Burnside

**Meets Friday Fortnightly**

New Wave Kids 4pm | New Wave Youth 6:30pm

**Sunday School During the Service in School Terms**

For enquiries contact our office:  
**P 5476 4263**  
*We're not just a church, we're a family*

**PROTECT YOUR OUTDOOR AREA FOR ALL SEASONS**

**NEW SHOWROOM OPEN NOW**

Keep out the weather and extend your living space.

Our blinds are retractable when not needed and are available in colours and styles to compliment your exterior scheme.

Available with spring, crank or motorised operation, they are hard wearing, and made to withstand our tough conditions.

Ours is a well established local family business with the experience to advise and install.

Our quality products are made to last.

Local Hinterland Company

Call us for an on-site measure and quote. Our experts will give you the right advice about the best product for your project.

Shop 5/46-50 Hospital Road, Nambour  
**5441 6000**  
[www.customcurtains.com.au](http://www.customcurtains.com.au)

**CUSTOM Curtains and Shade**

Blinds • Awnings • Curtains • Shutters • Security • Wallpaper



**Jayda on mission to empower women via boxing lessons**

by **Janine Hill**

JAYDA Glazebrook credits boxing with getting her life on track. Now she wants to give other women the same chance.

The boxer and personal trainer plans to offer boxing classes for women from the OneHeart gym in Nambour's C Square.

Jayda said she was particularly interested in working with women who needed to boost their confidence. "I want to help females realise their real strength and allow their full potential to show. Often, they just need some guidance," she said.

Jayda, 20, got into boxing at 13 when, through a sibling, she ended up at OneHeart to learn self-defence with Charlie Weterer. She said boxing had helped her build confidence during her teenage years. "I've been doing it six-and-a-half, seven years and I've never looked back. Basically, it saved my life and it's something I've carried with me and it's some-

Jayda Glazebrook: "Basically, (boxing) saved my life... it's something that continues to help me in my whole life."

thing that continues to help me in my whole life," she said. "That's why I'm so passionate about being able to help others - give them that help I've got."

Jayda said boxing taught mental and physical strength. "Some people need the physical strength to feel the mental strength and some people need the mental strength for the physical strength. It's finding that balance."

"It's very mentally tough but when you become mentally strong you carry that into your physical boxing."

Jayda said boxing could be challenging but that was also why it was empowering.

"It can be quite confronting when you're being pushed to your limits but if you've got the right person there, it makes all the difference," she said.

"That's what I aspire to be for other people."

• She is looking at starting the classes, which will cost \$10, on Wednesday and Friday mornings in September or October, pending interest. Phone 0428 804 812 for information.

Coach's Vision for encouraging youth

**Fighting chance**

by **Janine Hill**

CHARLIE Weterer's ears have never been much good but his vision more than makes up for what he might not hear.

Charlie sees graffiti and the pain behind it. He sees people and who they could become. He sees a carpark that could be a boxing ring, market stalls, and lives changing.

Charlie has been running OneHeart Training Academy on the lower level of C-Square, Nambour, for more than eight years now.

It started as an initiative to steer local youths who might have been on the wrong path on to a better one by teaching them how to box but has flexed to accommodate teens struggling to find their place in the world for other reasons.

"Often they just don't feel like they fit in. Some of them are getting bullied," Charlie said.

"They come and box here and they get respect from the kids on the street," he said.

It's a delicate dance Charlie does, saying the right thing at the right time.

"You learn to read them. You can ask them but you'll only get what you want to hear," he said.

Charlie grew up to be more observant than most to compensate for being born deaf.

He also grew up around a lot of violence and was in jail by 17 with 13 assaults to his name.

"I was angry and the thing is, I don't know what I was angry about. I had no reason to be angry."

Charlie works by gaining trust, offering positivity, and occasionally putting them firmly in their place.

"I've always had the view that you get the kids to trust you first. If you fight the kids, they fight back harder and they get more angry."

Jayda Glazebrook, 20, is one of Charlie's success stories (see story facing page).

Charlie is lining her up to train women who are struggling - with mental health, on the streets, or in domestic violence situations.

He has his sights set on putting a boxing ring in the top, under-used level of the C-Square carpark where Jayda could train the women and boxing events could be held.

Charlie's vision for the carpark was previously blocked by costly council building certification requirements which the disability pensioner can not afford.

The complex has since changed hands and Charlie plans to start again, trying to get others to see the potential the way he does.



Charlie Weterer and members of the OneHeart Training Academy pictured on the top floor of C-Square car park.



Proudly serving the Sunshine Coast for over 16 yrs

**DentalExcel**  
 WE'RE HERE FOR YOU!

**NOW OPEN FOR ALL PROCEDURES**

In line with Stage 1 restrictions, we look forward to welcoming you back for ALL of your dental needs.

**COVID-19 Screening measures in place to ensure safety.**

Dental Excel is grateful for the dedication of our staff who have been there for your emergency treatments throughout this crisis. We are still here for you and still adhering to strict hygiene precautions to keep you and us safe.

Dental Excel is proud to be a part of the MARLEY DENTAL GROUP

**DentalExcel**  
 Bulk Billing Medicare Child Dental Benefit Scheme for Eligible 2-17 yrs

- Family Dentistry • General Dentistry • Cosmetic Enhancements • Zoom™ Teeth Whitening
- Veneers • Crown and Bridge • White Fillings • Preventative Dentistry • Children's Care
- Gum Disease Maintenance • Dentures and Veterans Affairs • Dental Implants

**Payment plans available - no interest ever**

Open Monday to Saturday • Early and Late Appointments

Ph: 5445 0166 2-4 Margaret Street, Palmwoods [www.dentalexcel.com.au](http://www.dentalexcel.com.au)

**CONTAINERS FOR CHANGE**

**NAMBOUR CONTAINER REFUND DRIVE THRU**

STAY IN YOUR CAR WE PAY CASH

**URBAN DEPOT**

**FIND US AT - 1 WINDSOR RD, BURNSIDE**

**ASPHALT & BASE CONSTRUCTION**

CALL JOSEPH 07 5478 9834 | 0402 932 159

**38 YEARS EXPERIENCE FREE QUOTES**

RED BROWN & BLACK ASPHALT | MACHINE & HAND LAID HOTMIX ASPHALT

- CAR PARKS
- SALES YARDS & DISPLAY AREAS
- DRIVEWAYS
- TENNIS COURTS
- FOOTPATHS, KERBS
- GRAVEL ROAD
- CRACK SEALING
- PRIVATE ROADS
- SPEED HUMPS
- MODERN, STYLISH EDGING
- EXCAVATIONS & DRAINAGE

[www.asphaltbaseconstruction.com.au](http://www.asphaltbaseconstruction.com.au)

Yandina Art & Framing  
 Framing | Gallery | Art Supplies

**Live Paint**

James Stickland 11am - 1pm

Jasmine Veronique Meet the artist Exhibition in our art space 1:15 pm - 3:15 pm

Jade Stevens 3:30pm - 5:30 pm

Product demos Play with paint

**Yandina Street Fair 20th August**

7 Stevens Street Yandina, Q 4561 [admin@yandinaartandframing.com.au](mailto:admin@yandinaartandframing.com.au) 07 5446 8000 Trading 6 days: Mon - Fri 9:30 - 4 Sat 9-2

# Retired cop rejects Minister's response on police numbers

by Cameron Outridge

POLICE Minister Mark Ryan's response to questions about police numbers in Nambour has been described as 'spin' by the retired police officer who raised the issue.

The former Nambour cop retired in 2013 after 29 years service and raised concerns in the last *Gazette* that police numbers were not keeping pace with local population growth.

He challenged the government to provide details of:

- Recommended strength and actual strength for Nambour Station when Annastacia Palaszczuk became Premier in 2015, and
- Recommended strength and actual strength for Nambour Station today.

"I am of the view that the government has failed to ensure police numbers have kept in line with population increases in Nambour and the rest of the State," he wrote.

Mr Ryan replied: "I am advised that there are currently 54 police officers based at Nambour Police Station."

"Police advise that the approved strength for Nambour Station was 30 in 2015, and the approved strength in 2023 remains at 30."

"The approved strength is a decision of the Commissioner and the Queensland Police Service, they are the experts when it comes to these matters."

"It's important to note that the new, larger Nambour facility has allowed additional officers to be based there that include criminal, child and forensic crash investigators, highway patrol officers and a school based police officer."

"It's also important to note that the Queensland Police Service has adopted a borderless policing policy whereby officers in a region such as the Sunshine Coast are deployed to wherever they're needed, when they're needed."

"The Queensland Police Service's world leading adoption of the QLITE electronic device means that they always have 'the office' with them, allowing police to stay mobile so that they spend very little time at their designated station."

## 'Not keeping pace'

In response, the retired police officer quoted the minister, and said the response proved numbers were indeed not keeping pace with population growth.

"... the approved strength for Nambour Station was '30 in 2015 and the approved strength in 2023 remains at 30,'" he said. "This despite the growth in the Sunshine Coast hinterland in the last eight years. Why has there been no increase in general duties police at Nambour?"

He said the Minister appeared to be palming off responsibility for numbers to the Commissioner.

"Would it also be the case that a Minister has some responsibility to keep staff numbers in their department in line with population growth?" he asked.

He also dismissed the Minister's statement that "the newer, larger Nambour facility has allowed additional officers to be based there."

"When I retired from Nambour Station in 2013 there were already 'criminal, child and forensic crash investigators, highway patrol officers' working out of that complex, so this is nothing new."

"Is someone trying to create the impression that, somehow, police numbers at Nambour have grown with the opening of the new station? Those 'additional officers' have their own specialist duties to perform across the whole of the Sunshine Coast and none of their duties will include a uniformed beat patrol of Nambour CBD."

He said the "borderless policing policy" was also nothing new. "It's been around forever, so what kind of impression is that statement trying to create? All it does is reinforce the fact that QPS service delivery is purely reactive and not enough proactive. And if we are going to be reliant on this 'borderless policing policy' let the government tell us what is the actual increase in police numbers in the Sunshine Coast Police District in the last eight years."

"All I am seeing in the response from the Minister's office is spin with no substance and a failure to properly support our hard working police."

## Visible police beat brings relief

'The reduction in anti-social behaviour has happened because police are here'

by Janine Hill

RE/MAX Nambour principal Tristan Brown has been calling for an effective solution to anti-social behaviour in and around Nambour's Town Square and it has arrived dressed in blue and white.

Mr Brown said the presence of police officers and a mobile police beat van in the Lowe Street area almost every day for a couple of weeks had made a marked difference.

"On a daily basis, we've had the police van or we've had police walking the streets and it's been wonderful," he said.

"I wish it hadn't had to get to that stage but there is a noticeable difference in the actual feel of the town centre."

"I've only witnessed one day of anti-social behaviour and that was the one day that police weren't visible."

Nambour police have not confirmed that any special operation is underway in Nambour. A QPS statement said police were always active and on patrol.

Mr Brown, whose business is based in Lowe Street, believes the visible police presence has made a point, even if its effect does not last.

"There's a distinct correlation between a police presence in the area and a reduction in anti-social behaviour."

Mr Brown was under no illusions that a few weeks of visible police would permanently fix the alcohol and drug consumption, unruly behaviour and violence that has made some people uncomfortable about shopping, working or doing business in the vicinity of the square.

"It will all go back to normal. We're not silly. I think the big thing that's been achieved is recognition that this is what's required," he said.

"We've heard arguments from various people that police presence isn't the issue and we need to solve issues other ways but at the end of the day, the reduction in anti-social behaviour has happened because police are here."

Mr Brown is open to discussing other issues and solutions but the safety of his staff and the future of his business were his priorities.



The Mobile Police Beat vehicle has been a regular & welcome sight in Lowe Street, lately.

With LNP Member for Maroochydhore Fiona Simpson, Mr Brown spoke to media last month about the need for real action to ensure public safety in the Lowe and Short Street areas.

Ms Simpson claimed ALP Member for Nambour Rob Skelton was missing in action on the issue.

Mr Skelton pointed to Police statistics showing Nambour was one of the safest places on the Sunshine Coast and that crime was decreasing.

Mr Brown said getting on top of the anti-social behaviour in the Nambour CBD should never have become political.

"It only became political because of the politicians," he said. "I just want the problem fixed and I was as vocal with (former LNP Member for Nicklin) Marty Hunt as I am with Rob, but at the time, I didn't have a business in that location."

**ALLCOAST TYRE SOLUTIONS**

22 Coronation Ave  
Nambour  
(Opposite the RSL)

Ph: 07 5343 8344

**OUR SERVICES**

**TYRE FITTING**  
Mowers, Car, SUV & 4WD's

- Tyre Repairs
- Tyre Rotations
- Wheel Alignments

**BATTERIES & WIPERS**

www.allcoasttyres.com.au

ASK US ABOUT OUR BUY 3 GET THE 4TH FREE DEALS

*Need legal advice about retirement living?*

**David Wise Solicitor**

Specialist advice for residents and prospective residents of retirement villages, over 50's resorts, and manufactured home parks, including entry, exit, dispute resolution, Wills, Powers of Attorney and Estates.

0412 254 080 | principal@davidwisesolicitor.com.au  
www.davidwisesolicitor.com.au

MEMBER Queensland Law Society.

**Brady's Fruit**

FRUIT & VEGETABLE SPECIALIST  
• Wholesale & Retail •

Col & Sandy Pearce  
Ph/Fax 07 5445 9260

*Park at your leisure where shopping is a pleasure*

Woombye-Palmwoods Rd.  
Palmwoods, Q. 4555

# Market Specials

<p><b>\$4.50</b> KG.</p> <p>Pink Lady Apples</p>	<p><b>\$2.50</b> EA.</p> <p>Whole Celery</p>	<p><b>\$2</b> EA.</p> <p>Cherry Tomatoes 250gm Punnet \$8.00 per Kg</p>
<p><b>\$4</b> KG.</p> <p>Murcott Mandarins</p>	<p><b>\$2.50</b> EA.</p> <p>Baby Broccoli</p>	

**LOW PRICES ALL DAY EVERY DAY**

<p><b>PAYLESS EVERYDAY</b> <b>\$12</b> kg</p> <p>Ingham's Chicken Roll</p>	<p><b>PAYLESS EVERYDAY</b> <b>\$19.50</b> kg.</p> <p>Don Melosi Premium Boneless Leg Ham</p>	<p><b>PAYLESS EVERYDAY</b> <b>\$22.50</b> kg.</p> <p>KRC Australian Silverside</p>
--	--	--

SCAN TO SUBSCRIBE TO OUR LATEST WEEKLY CATALOGUE STRAIGHT TO YOUR INBOX!

Specials available Wednesday 16th August until Tuesday 22nd August 2023

**WOOMBYE**  
**20 BLACKALL ST**

**OPEN 7 DAYS!**  
**PH: 5413 8007**

Specials available while stocks last. Limit rights reserved. We reserve the right to correct any printing errors and omissions.

# Swarm warning:

## Bee activity heightens in hinterland

THE bee-swarming season has started on the Sunshine Coast, and according to bee expert Scott Whitaker, we can only expect to see it intensify over the coming weeks and months. "Swarming is how bee colonies reproduce," said Scott, the co-owner of Hinterland Bees. "Simply put, they create a new queen, and the old queen leaves with up to 70 percent of the population - this could be up to 50,000 bees - to go out into the world and find a new place to build a nest."

With decent rainfall over winter, we are seeing our flora respond to the warmer spring temperatures and provide the extra nutritional resources for beehives to expand and reproduce.

"While a swarm of bees can be intimidating, they are rarely a threat to people if left alone," said Scott, who has been keeping bees since 1996. "Swarms are often observed as large clusters of bees hanging off tree branches, fences or building structures. This is a transitional stage for the bees while their scouts seek a new nest site. In this state, bees are effectively homeless, and because bees only defend their home, they pose little threat to people around them."

So, what is the best course of action?

1. Keep your distance and, if necessary, cordon off the area to avoid accidental contact. It might also pay to let your neighbours know, especially if the swarm is close to a property boundary.

2. Don't try to move them on yourself by spraying them with water, insecticide or throwing objects at them. This is a surefire way to aggravate them and get stung.

3. Call a beekeeper who can safely relocate the swarm into a new hive box and take your problem away. Expect to pay for the beekeeper's time on site and their travel time.

"An experienced beekeeper knows that there is no such thing as 'free bees,'" said Scott. "Swarms do possess some risk of disease and, for the beekeeper, it is pointless to be col-



Scott Whitaker with a swarm... "homeless bees are effectively homeless, and because bees only defend their home, they pose little threat to people around them."



lecting swarms if they're not able to spend time preventing their own hives from swarming."

Should you take any action at all? Scott said in most cases, bee swarms will eventually move on. "It may take an hour, or they could hang in place for days. Occasionally they don't move on at all and start building their nest in the open."

He said it was important to know that these

bees are looking for a new place to establish a new nest, and more often than not, that is in the walls and ceilings of our houses. "By taking action to move a swarm cluster, you may be avoiding the far greater cost of removing a nest of bees from the wall of your home."

Currently running over 200 hives for honey production and pollination, Scott specialises in live bee removal. He relocates and rescues over 150 nests and swarms yearly.

As the only full-time professional bee-removal expert operating on the Sunshine Coast, he has extensive experience working for homeowners, property managers, pest controllers and local councils.

### See videos of how Scott does it here:

- <https://www.instagram.com/reel/CHigXrP-wNa/?igshid=MzRIODBiNWFIZA>
- <https://www.instagram.com/reel/Ch4MJv-0j4i/?igshid=MzRIODBiNWFIZA>
- <https://www.instagram.com/reel/CkCX-U4OMqZq/?igshid=MzRIODBiNWFIZA>



Some of Restoring Hope Parkinson's Therapy's Sing-A-Long group members.

## Fundraising tea for Parkinson's at Flaxton Barn

RESTORING Hope Parkinson's Therapy is a three-year-old charity on the Sunshine Coast. RHPT offers intensive speech therapy for people with Parkinson's, using an approach developed in the United States called 'Speak Out'

"We teach people how to get their vocal strength back - the strength that Parkinson's is stealing away," according to Speech Pathologist & Board Member Cathryn Shapter.

"We also offer weekly group therapy and a weekly choir as part of our therapy maintenance programs."

Parkinson's is the fastest growing brain disease in Australia. It takes away people's voice, movement, confidence and ability to participate socially. "But it doesn't have to be this way," said Cathryn. "Research and therapy programs have delivered life-changing results when people with Parkinson's are taught to engage different brain pathways for moving and speaking."

Under the program people with Parkinson's learned to "move with intent, speak with intent and live with intent" to regain their voice, their movement and their quality of life.

Restoring Hope Parkinson's Therapy is partnering with the Flaxton Barn to hold a fundraising afternoon tea and on Saturday September 2. There will be some fantastic prizes up for bidding, which have been donated by generous local businesses.

"Our beautiful Benevolent Bear 'Arabella' will also be auctioned on the day - Arabella is currently on display at the Mapleton Post Office & bids are currently open."

Come along and support RHPT for a fun afternoon in support of a wonderful cause. All funds raised helps RHPT to offer our group maintenance programs without charge for people with Parkinson's.

► [www.rhpttherapy.org.au](http://www.rhpttherapy.org.au) | [www.facebook.com/rhpttherapy/](https://www.facebook.com/rhpttherapy/)

## Miracle in Maleny

# Golfer scores, not one, but two holes-in-one

by Richard Owen

GOLFERS dream of scoring a hole in one, but imagine Amie Flanagan's elation when she scored, not one but, two Aces during an Apex Charity Day event on July 30 at the Maleny Golf Club in Queensland's Sunshine Coast Hinterland.

Having holed out on the Par 3 17th - a green most players struggle to even hold - Amie stepped onto the Tee of the even more difficult Par 3 1st hole just a few minutes later still buzzing and brimming with confidence.

"I'd jokingly said to the boys on my team, 'Stuff it I'm gonna get another one' as we were driving down to the first," she chuckled. "I didn't actually think it was going to happen, and we couldn't believe it when my ball landed just in-front of the pin and rolled straight into the hole!"

The group's screams of astonishment and jubilation could be heard from the clubhouse when what's been estimated as a 67 million-to-one shot found the cup!

Their 4-ball Ambrose team, competing in the shotgun start event as "The Disruptive Ducks", shot 8 under off the stick on the day - enough to earn bragging rights for second place.

Amie, 35, lives at Maroochy River on the Sunshine Coast and plays off a handicap of 38 after taking up the game of golf about two years ago during the pandemic.

However, she now has three Aces to her name, having already scored a hole-in-one in May this year.



Amie Flanagan's golfing feat is unlikely to ever be repeated.

Porter said Amie's golfing feat would go down in the club's annals as a feat unlikely to be ever repeated.

"Not too long ago we had a husband and wife both score Aces during the same round, so you never know," he quipped.

Mr Porter said Maleny was popular as a Charity Golf Day venue for service clubs like Apex which held the event to raise funds to support local athlete Kael Thompson in her pursuit to represent Australia at the 2024 Paris Paralympics.

Watch here [www.youtube.com/watch?v=TyGuj5uGs](https://www.youtube.com/watch?v=TyGuj5uGs) to view camera footage of when Amie scored here second Ace on the 1st hole.

► For more information about Maleny Golf Club, the course and membership options visit the website: [www.golfmaleny.com](http://www.golfmaleny.com)



Holly Wiley, left, and Krystal Bartley are the proud owners of Ari Coffee Co in Currie Street.

## New Ari Coffee Co cafe opens in Currie Street

ARI Coffee Co is a new family-owned cafe in Currie Street Nambour run by Krystal Bartley and Holly Wiley.

Ari Coffee Co is open Monday to Friday from 6am-2pm and caffeine aficionados have already been lining up to taste the duo's Vintage Black coffee blend.

"We are waiting on our food license but we are still currently able to provide locally-sourced pastries and sweets," said Holly.

Krystal has a passion for serving good quality coffee for everyone to enjoy.

"Opening a cafe is something I've always wanted to do. I just love everything hospitality," she said.

Ari Coffee Co is at 9/70 Currie Street, Nambour, at the entrance to Centrepark Arcade.



Your Local, Family-owned Optometrist since 1984  
Call Us or Book Online  
07 5441 2277



## WILSON FITZPATRICK FAMILY OPTOMETRISTS

A local & independent optometrist proudly serving the Sunshine Coast with individualised eye care and impeccable frame design since 1984.

Equipped with their own lens technician, your glasses are prepared on site with the utmost care.

- ✓ Exceptional Eyecare for the whole family
- ✓ Ethical & Professional Advice
- ✓ Glaucoma, Cataract, Macular Degeneration Assessments
- ✓ Most standard single vision lenses ready in 20 minutes!

40 Howard St, Nambour • [fitzpatrickoptometrists.com.au](http://fitzpatrickoptometrists.com.au)

**MORNINGSTAR DIGITAL**

**YOUR LOCAL WEB DEVELOPER**

Mention this ad for a locals discount

**1300 392 542**  
M11 / 65 Currie St, Nambour 4560

[www.morningstardigital.com.au](http://www.morningstardigital.com.au)

**LOCAL INDEPENDENTLY OWNED & OPERATED DIGNITY DOESN'T COST THE EARTH**

**CHERISH FUNERALS**

Affordable & Dignified Care from \$2460

★★★★★  
Google Review

"Such a lovely experience dealing with this amazing team at such a difficult time in our lives. They are very knowledgeable, supportive and caring in aspects of caring for our father. Thankyou for making a difficult time so seamless."

24/7 care line  
**1300 854 363**

4/27 Coronation Ave  
Nambour 4560

[info@cherishfunerals.com.au](mailto:info@cherishfunerals.com.au)  
[www.cherishfunerals.com.au](http://www.cherishfunerals.com.au)



The PCB Ltd Directors & Staff of the Heritage Bank are proud to support Palmwoods Arts & Craft Group in their recent endeavours.

A big Thanks to all the ladies of the Palmwoods Arts & Crafts Group who during a morning tea session on 21 June donated 54 beautiful quilts to a SCOPE representative. All the quilts were lovingly made by the ladies of the Craft group - & they once again were delighted to present SCOPE with all these beautiful & colourful quilts which will be given to many different & various groups requiring assistance.

Palmwoods Community Bank Continuing to support our Palmwoods Community.

*Palmwoods Community Branch Ltd*  
... proudly supporting our community ...

# FREEZE & HEAT MEALS

Delivered to your door every Friday!

## MAIN MEALS - \$11.00 EACH

- 1. Roast garlic and rosemary crusted lamb - LG**  
Served with roasted vegetables and gravy.
- 2. Crispy skinned lemon and herb roast chicken - LG**  
Served with roasted vegetables and gravy.
- 3. Beef lasagne**  
Lean beef bolognese layered with bechamel, pasta and cheese.
- 4. Braised beef and bacon casserole - LG**  
Slow cooked steak and bacon in a rich beef gravy, served with herb buttered potatoes and seasonal vegetables.
- 5. Corned beef with fresh herb white sauce - LG**  
Served with steamed vegetables.
- 6. Cottage pie - LG**  
Lean beef and vegetables sauteed in gravy and baked. Served with creamy mash potatoes and seasonal vegetables.
- 7. Chinese sweet and sour pork - LG DF**  
Tender pork pieces in sweet and sour sauce with stir-fry vegetables, served with rice.
- 8. Mild Indian butter chicken - LG**  
Mildly spiced creamy tomato curry, served with basmati rice.
- 9. Satay vegetable curry - LG DF VEG**  
Sautèed chickpeas and vegetables in a creamy peanut coconut gravy, with sweet chilli and fresh ginger.
- 10. Winter vegetable and feta quiche - VEG**  
Savoury custard baked in filo pastry with roasted vegetables, fresh herbs and cheese.
- 11. Creamy garlic prawns - LG**  
Australian prawns marinated in garlic and fresh herbs, sauteed in butter, white wine and cream and finished with parmesan. Served with rice.

## SOUPS - \$8.00 EACH

- 12. Cream of roasted sweet pumpkin soup - LG DF VEG**  
A wholesome soup of roasted sweet pumpkin, sweet potato, sauteed onion, celery, carrot and coconut cream.

LG = Low gluten

DF = Dairy free

VEG = Vegetarian

## WINTER SPECIALS

- 13. Curried beef sausages in coconut cream - LG DF** **\$11.00**  
Beef sausages and vegetables braised in a mild creamy curry coconut sauce, served with rice.
- 14. Chicken cacciatore with fettuccine** **\$11.00**  
Oven roasted chicken cutlet, slow cooked in red wine, tomato and gravy. Served on fettuccine with basil pesto and parmesan.
- 15. Country chicken, sweet corn and chunky vegetable soup - LG DF** **\$8.00**  
Hearty chicken and vegetable broth seasoned with fresh herbs, preserved lemon, garlic and sweet corn.



07 5445 7044

www.rangecare.com.au

25.05.2023



### HOW TO ORDER

Call 07 5445 7044 OR order online via the link below:

[www.rangecare.com.au/freeze-and-heat-meals](http://www.rangecare.com.au/freeze-and-heat-meals)

Minimum of 5 meals and \$5 delivery fee applies to all orders.

Scan the code to order online



Glowing Example:

## Whalley Chambers façade lighting enhances nighttime ambience

IT'S official. The final piece in Nambour's Streetscape Project is now complete.

The night lighting of the historic Whalley Chambers Façade has created the mood and ambience that project organisers Reimagine Nambour Inc had hoped for.

The grand 100-plus year old building looks splendid with its restored facade now shining day and night.

A Reimagine Nambour Spokesperson said one of the project's aims, was to link into the Special Entertainment Precinct which encircles the Nambour CBD.

He said the idea was to enhance the potential nightlife scene and Whalley Chambers was a glowing example of how to achieve that.

The total Streetscape project was

supported by a Federal Community Development Grants Program and Reimagine Nambour would like to thank, the Federal Member for Fairfax, Ted O'Brien.

They also wished to specially thank the building's owner, Tony Duncan, for restoring the facade back to original in 2021, and then taking on this further initiative with lighting consultants Brad Kennedy Electrical.

"We thank them for the many hours put in to making sure the finished article was just right."

The re-painting of another historic building - Chadwick Chambers is now underway and the extensive renovation and re-paint of our Art Deco, Club Hotel last year brings revived interest into the main street of Nambour.

### Explain your business. Get more customers

BEHIND every small business there's a story worth knowing. Write-ups in the Gazette are

engaging, memorable and they make all your other marketing work better. Phone Tanya 04000 69 711.



David Harris out front of his freshly-painted, century-old Chadwick Chambers.

## Historic building shines again following facelift

by Janine Hill

THE façade of another historic building in Nambour's main street has been given a makeover.

The century old Chadwick Chambers on the eastern side of Currie Street has been freshly painted in the heritage colours of Manor Red and Classic Cream.

The freshen up follows the reveal of the old Whalley building façade further along Currie Street, and a revamp at the Club Hotel building on the opposite side of the road a few years ago.

The Royal George Hotel on the corner of Currie and Mill Streets is in the process of being updated but lost some original features in previous renovations.

David Harris said maximising the building's historical features had been the plan when he and Tamara Brown bought Chadwick Chambers in 2020.

"We moved down from Toowoomba," he said. "My old work was in construction and so I had a liking for a lot of the older buildings that

we were used to in Toowoomba," he said.

"That was one of the things that pulled us towards this building and makes it special."

The paint job, carried out by the Higgins Group, was triggered by work on the side of the building.

"While we were doing that, we thought we'd return the mouldings and paint it back in the original colours," David said.

David is grateful for a Nambour shopfront improvement program.

"To be honest, we couldn't have done the paint work without the help from the council with the \$5000 support package they put together with the Chamber of Commerce," he said.

Thomas Chadwick commissioned construction of Chadwick Chambers in 1924 after his drapery store was burnt down in a fire which razed a number of businesses in town. It remained in the family until 1971.

David and Tamara run the gaming business, Heretics Haven, from the building. [www.hereticshaven.com.au](http://www.hereticshaven.com.au) | 5338 8919 | [info@hereticshaven.com.au](mailto:info@hereticshaven.com.au)



The last bin December 3 2003.

## Museum Open Day to mark 20 years since Sugar Mill closed

NAMBOUR Museum is holding a free public open day on October 14 to mark the 20th anniversary of the closure of the sugar mill and the 30th anniversary of the establishment of the museum association.

The day will be held from 10am to 3pm Nambour Museum 18 Mitchell Street, Nambour

Formalities to begin at 11am, including the official opening of the Museum's new display dedicated to the Maroochy River Tram-way Lift Span Bridge.

There will be performances from the Sunshine Brass Band, and a special oration from Wendy O'Hanlon.

For information phone Clive Plater 0408 713 093.

## Notice of Annual General Meeting

MONTVILLE Chamber of Commerce will hold its Annual General Meeting at Flaxton Gardens on Wednesday September 20.

All positions on the Executive Committee are open.

The meeting starts at 5pm for 5.30pm.

Nomination Forms can be downloaded from our website: [www.montvillecommerce.com.au](http://www.montvillecommerce.com.au) or email: [info@montvillecommerce.com.au](mailto:info@montvillecommerce.com.au) | 5338 8919 | [info@hereticshaven.com.au](mailto:info@hereticshaven.com.au) | 5338 8919 | [info@hereticshaven.com.au](mailto:info@hereticshaven.com.au)

# Father's Day

## AT FLAXTON GARDENS

Pre-order and pre-pay essential for your Father's Day event so our chefs can source your local produce and we are ready for you on arrival.

### BBQ FEAST

**FROM THE BBQ**  
smoked beef brisket  
chargrilled chicken  
seafood skewers  
vegan skewers

**SERVED WITH**  
soft tortillas & a selection of breads  
chargrilled corn on the cob  
FG slaw  
guacamole | sour cream | salsa | condiments

**SOMETHING SWEET**  
bread & butter pudding  
churros  
rich chocolate brownie magnums  
all served with your choice of:  
coulis, cream or custard

**75pp | under 12's 40pp**

### BREAKFAST BUFFET

**GRAZING TABLE**  
muesli, yoghurt & fruits  
fresh fruit salad  
selection of danish pastries  
selection of breads

**HOT BUFFET**  
bacon | sausages | creamy scrambled eggs | hash browns  
baked beans | smashed avocado | fetta & cherry tomato salad

**50pp | under 12's 25pp**

**Breakfast**  
Wednesday - Sunday  
8:00am - 11:00am

**Casual Garden Menu**  
Wednesday - Sunday  
8:00am - 11:00am

**Seasonal Set Menu**  
Wednesday - Sunday  
8:00am - 3:00pm  
Pre Order - Pre Pay

**Tapas Bollinger Luxury High Tea**  
Saturday  
10:00am  
Pre Order - Pre Pay

**Flaxton Gardens**  
Voted 5<sup>th</sup> in Australia Reception Venues.

CALL NOW TO BOOK  
**07 5445 7450**  
313 Flaxton Drive, FLAXTON  
[flaxtongardens.com.au](http://flaxtongardens.com.au)

**07 5445 7044**

[www.rangecare.com.au](http://www.rangecare.com.au)

## ELITE FOOT CARE

Podiatry • Orthotics • Footwear

**Online Bookings Available**

Call Elite Foot Care on **5328 3588** to book your appointment

For online bookings  
[www.elitefootcare.com.au](http://www.elitefootcare.com.au)

# DO YOU HAVE FOOT AND LEG PAIN?

The team at Elite Foot Care can treat:

- Ingrown Nails
- Corns & Callus
- Heel Pain
- Achilles Pain
- Shin Splints
- Arthritis
- Knee & Hip Pain
- Lower Back Pain
- Kids Podiatry
- Diabetic Assessment

Call **5328 3588**

• Private Health Rebates • Medicare Rebates  
• DVA Registered • NDIS • Workcover  
• Home Care Packages • No Referral Needed

4/40 Wilson Avenue, Woombye  
Corner of Blackall Street and Nambour Connection Road

OPEN HOURS: Mon-Fri 8:30am - 5pm [www.elitefootcare.com.au](http://www.elitefootcare.com.au)

## Nambour's new park 'n' ride facility opens

A new park 'n' ride facility in Nambour providing 50 new car parking spaces was to be opened to the public from 4am, Tuesday August 15.

The new facility on the eastern side of the station is part of early works for Stage 1 of the Beerburum to Nambour Rail Upgrade (B2N) project aimed at increasing capacity and reduce travel times for passenger and freight services.

Local residents can expect changes to traffic flow as vehicles access and exit the new park 'n' ride from Mill Street and Civic Way.

A footpath for pedestrians will be provided from the new facility to the station at Nambour station.



Kent Roberts of Charity Bricks and Aus Living Support Marketing Director Dessi Mitzeva in the Lego room.

## Pre-loved Lego helps keep rent paid, roofs over heads

THOSE little pieces of plastic that litter the floor of so many homes with children can help keep someone else in a house.

Pre-loved Lego has raised thousands of dollars for Aus Living Support, a Sunshine Coast-based charity helping people who need a hand to pay their rent or mortgage.

Charity Bricks, housed in a room off the Aus Living Support op-shop in Howard Street, Nambour, has so far generated \$25,000 in income to help people meet their payments.

Aus Living Support project officer Kent Roberts decided to try a re-selling Lego after seeing the success of other Lego stores.

"I do a bit of Lego myself and after collecting Lego for the last five or six years, I had an excess of Lego and saw another way we could make some money for the charity," he said.

Kent pulled more than 20 plastic tubs containing about 300kg of excess Lego out of his Lego room at home to stock the shop for starters about a year ago.

The Lego room is open on Tuesdays and Sat-

urdays and has proven popular with all Lego customers of all types.

"I've had a few people who have been looking for a particular part for a Lego set they've been trying to complete," Kent said.

"I've had grandparents come in trying to complete Lego sets they had for their children so the grandchildren can play with them now.

"Often they had Lego and lost pieces and now they're trying to replace the pieces they've lost over the years.

"And then there's parents who come in and buy a bag of random Lego so their kids can let their imaginations run wild and build things."

Kent often has an idea where to look to find just the piece that someone needs.

"I've had people come in and find that piece they've been looking for years. You see the joy on their faces and the excitement because they can finally complete a set they've had for years and put it on the shelf."

► **Aus Living Support is at 102 Howard Street Nambour.**



## Harry needs a home. Can you help?

4 Paws Animal Rescue is a dedicated nonprofit organization that offers sanctuary to homeless cats and dogs. Entirely powered by volunteers, our mission is to give these animals a second chance at a happy life.

Most of our animals come from council pounds, some are surrendered or abandoned, others are saved from cruel living conditions. Pictured is Harry who is one of two elderly residents at 4 Paws. This gorgeous senior is 15 years and is now just seeking a quiet forever home for the rest of his days.

An extremely cuddly, friendly and beautiful natured chap, he has an extraordinary, yet cute meow. Harry adores hoomans and as soon as he sees someone, he wants to show his affection.

Harry will be under our "Permanent Foster" program. What this means is that all vet fees for the rest of Harry's life are paid for by 4 Paws Animal Rescue. Desexed, vaccinated and microchipped, it would be amazing if we could find a loving home for Harry to settle into. Please visit our website- [www.4pawsanimal-rescue.org.au](http://www.4pawsanimal-rescue.org.au)

## Nambour Academy of Creative Arts:

# Unleash your creative potential - program open

by Janine Hill

APPLICATIONS are open for a Nambour State College program fostering the next generation of creative minds.

The Nambour Academy of Creative Arts was established in 2019 to encourage students' passion about the creative arts.

The program is open to year seven, eight, nine and 10 students and provides them with extra opportunities in art, music, dance and drama.

The head of the school's arts department, Liz Clout, said participating students attended two extra classes a week in their chosen subject area, usually at 8am.

The classes are vertically integrated, meaning that classes for each subject contain students from across the four year levels.

"It's working in an extended space. They get more time for their passion subjects than if they were doing the regular classes," Ms Clout said.

"We find the vertical classes work really well. There's collective learning across the year levels. It's really important. It brings like-minded students

together."

Ms Clout said NACA students often participated in creative events which showcased their talents.

Some NACA students recently attended CGEN - Creative Generation - in Brisbane.

"I think there were about 1800 students on stage this year. It's a large number of students to be a part of and we're really excited about that.

"We believe the extra NACA classes have been the reason students have been able to get these opportunities."

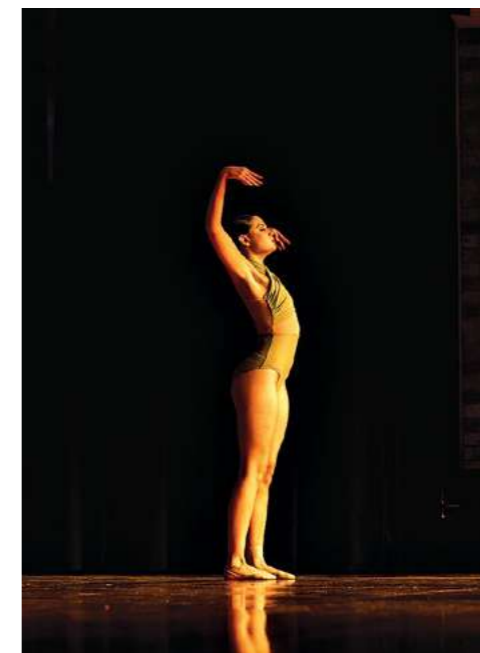
Ms Clout said NACA linked with The Old Ambo, Nambour's creative hub, and held an annual visual arts exhibition there.

Some NACA students sometimes went on to certificate level studies in years 11 and 12, she said.

Ms Clout, said about 170 students applied for the last annual NACA intake.

The number of places offered was dependent upon timetables and teacher availability, she said.

To submit an expression of interest, go to [namboursc.eq.edu.au](http://namboursc.eq.edu.au), and click on the curriculum tab and then excellence programs.



Year 12 Academy of Creative Arts dancer Sophie Robinson.



Year 9 student Ali Poland on guitar.



From left Division President Patsy Lee, International Officer Lee Goleby, Secretary Maureen Brook, Treasurer Elise Winton, VP Alex Clarke and President Jenny Douglas.

## Yandina QCWA gears up for Street Fair

THE Yandina Branch of the Queensland country Women's Association recently held their AGM with Division President Patsy Lee chairing the meeting.

The ladies enjoyed hearing reports from the Branch President, Treasurer, International Officer and Country Kitchens Facilitator. Outgoing officers were thanked for their efforts during their terms and new members of the executive team were welcomed. Jenny Douglas was elected as President, Alex Clarke and Ursula Brady as Vice Presidents along with Elise Winton with the dual role of Treasurer and VP, Maureen Brook as Secretary and Lee Goleby as International Officer.

Solicitor and University of the Sunshine Coast University lecturer Kirsty Mackie was the guest speaker. The ladies were very interested in her presentation about the importance of key documents including Enduring Power of Attorney, wills and family agreements as well as forms of elder abuse and ways to protect

yourself.

The executive committee is looking forward to leading the branch for the coming year including their involvement in the upcoming Yandina Street Fair on Sunday 20th August. The ladies will be running a Tea Room and will be selling handmade craft items, plants, baked goods and preserves from the QCWA Hall at 11 Stevens Street Yandina. There will also be a raffle with a range of prizes including a Nutrimetics pack, picnic hamper and blanket and prizes donated by 10 Toes Brewery, Upton Hair, Thai Frenzy restaurant and the Beekeepers Association.

The ladies are very appreciative of the support of the community and local businesses which allows them to use funds raised to support members of the local and wider community.

► **For more information visit the Branch's Facebook page or contact the Branch by email [yandinabranch@qcwa.org.au](mailto:yandinabranch@qcwa.org.au).**

**Montville Chamber of Commerce Inc.**

**NOTICE OF ANNUAL GENERAL MEETING**

**Wednesday 20<sup>th</sup> September 2023**

**5:15pm for 5:30pm**

**At Flaxton Gardens**  
313 Flaxton Drive, Flaxton

All positions on the Executive Committee are open. Nomination Forms can be downloaded from our website: [www.montvillecommerce.com.au](http://www.montvillecommerce.com.au) or email: [info@montvillecommerce.com.au](mailto:info@montvillecommerce.com.au)

**Nominations close 5pm 6<sup>th</sup> September 2023**

**SUNDALE**  
Because we care

# NOW SELLING

**FROM \$350,000**

98 Windsor Rd  
Burnside

1 1

Impressive one and two bedroom units now available at Rotary Gardens Village.

You'll have access to wonderful amenities right at your door step with easy connection to some of the Sunshine Coast's best bowls, golf and RSL clubs nearby.

**BOOK A TOUR**

Please call Bronya on **0439 862 940** for more information or to book a tour

**ROTARY GARDEN VILLAGE**  
BY SUNDALE

**FROM \$505,000**

61 Jubilee Drive  
Palmwoods

2 1 1

You have nothing to do but to enjoy this picturesque 2-bedroom unit which is ready to move in now!

With some of the Sunshine Coast's best facilities on your doorstep, Palmwoods Garden Village offers residents a relaxed lifestyle and the perfect blend of privacy and connection to the community.

**BOOK A TOUR**

Please call Shorelle on **1800 572 422** for more information or to book a tour

**PALMWOODS GARDEN VILLAGE**  
BY SUNDALE

Images are indicative and to be used as a guide only. Information correct as at August 2023 and subject to change without notice.

[sundale.org.au](http://sundale.org.au)

# Solo Travellers!

Looking for a cruise with solo cabins or a Luxury Coach tour just for Solos?

Join Easy Travel and Cruise Nambour, Norwegian Cruise Lines and Grand Pacific Tours on Tuesday September 5<sup>th</sup> at 2pm to find out more!

**GRAND PACIFIC TOURS**

**NORWEGIAN CRUISE LINE**

**EASY TRAVEL AND CRUISE**  
- NAMBOUR -

**Shop 3**  
**23 Lowe Street**  
**NAMBOUR**

*like us!*

07 5313 4980

[www.easytravelandcruise.com.au](http://www.easytravelandcruise.com.au)

Exclusive event just for Solo Travellers. Join Easy Travel and Cruise Nambour, Norwegian Cruise Lines and Grand Pacific Tours on Tuesday September 5<sup>th</sup> at 2pm to find out more! RSVPs are essential, please phone 5313 4980 or email [admin@easytravelandcruise.com.au](mailto:admin@easytravelandcruise.com.au) to confirm your attendance.

## Letters to the Editor

The Sunshine Valley Gazette welcomes letters to the editor. Please keep your letters short (300 words maximum). All things being equal, preference is given to topical, shorter letters on local matters of general interest.

### Pharmacy closure 'caused by Coalition policies'

I wish Natalie (SVG, August 2) all the best with her new endeavour in the merged Mapleton & Montville Pharmacies. But I would like to point out that Fisher MP Andrew Wallace, who featured in the article, was a prominent member of successive Coalition Governments whose policies caused the Montville Pharmacy to close.

It started back in John Howard's day, when he cut places for Medicine at Universities as he thought that fewer doctors meant fewer claims on Medicare. Forget the impacts on health outcomes (because he did), or that fewer GPs would mean more people ended up in hospitals (too late for early intervention and causing human suffering as well as usually costing taxpayers 100 times what early treatment would have cost and with worse health outcomes), and that the cuts would take 10 years to flow through.

Next we see the Abbott/Turnbull/Morrison governments freeze the Medicare rebate for 9 years. That made many general practices unsustainable, like the one in Montville.

Then we see the Coalition government move the lines on the maps, taking Montville out of the Modified Monash Model category that attracted many doctors to work there. Luckily for Montville Dr Michael Simpson insisted on continuing to work in Montville despite this, but with his sad passing the Montville practice closed.

The shift from 30 day to 60 day prescriptions (less than the 90 days in many countries) will indeed have some impact on Pharmacies, but is part of a package to provide financial support for Australians without pushing up inflation and interest rates. It will be a massive relief for patients, who often fail to fill a script because they have rent or rates and mortgages and rising food and electricity bills to pay.

Electricity bills have risen in large part due to the failure of the Abbott/Turnbull/Morrison governments to develop any energy policy for 9 years let alone agree how to address climate change. And inflation is in part a result of

their economic incompetence leaving us with a trillion dollars of debt, and Scott Morrison throwing billions of dollars of taxpayers around before the election hoping to save some marginal seats.

The Coalition never saw Fisher or Fairfax as marginal, so never bothered to provide incentives to attract doctors or retain pharmacies in our communities.

Now that he is an opposition backbencher Mr Wallace can circulate a petition and do photo stunts, but it's a shame he neglected his electorate when he was in a powerful position in government.

— Dr Ian Matthews, Mapleton

### Nambour Street Fair congratulations

I'd like to give thanks to and congratulate Tramco, Club Hotel Namba and the Royal George on the success of the Nambour Street Fair.

I agree with every word in your report on this event (*Gazette*, August 2).

It was indeed a wonderful day and a perfect catalyst to bring life and rejuvenation back into the Nambour CBD. I realise that events like this don't just happen and that many hours of hard work, particularly from volunteers, go into bringing events of this calibre to fruition but the benefits are huge and varied. They even bring benefit to the mental health of our community. Personally, I'd love to see more.

I'd also like to show gratitude to the wonderful Andrea Kirwin for her ongoing promotion of Nambour and for sharing her love, beautiful spirit and amazing talent with us. How fortunate we are.

— Tony Sullivan, Nambour

### Thanks for CBD police patrols

I would like to express my thanks to the QPS and its Police Officers who have started patrolling the Nambour CBD on foot.

The presence of a Mobile Police Beat and Police Liaison Officers walking our streets has had an instant and profound change to the anti-social behaviour and vagrancy issues that Nambour has suffered for some time.

The men and women of our police force conduct themselves with the utmost courtesy and I urge all who appreciate our new-look Nambour to give a few words of thanks as you pass our constabulary in the streets.

— Peter Clark, Nambour

## Kindy to expand, welcome more kids

by Janine Hill

THE Range Community Kindergarten at Mapleton is having a growth spurt thanks to some hard-working parents, a supportive community, and some good fortune.

State government funding had been approved for the kindy to expand from 20 places to 27 places.

The president of the kindy committee, Brooklyn Hollis, said the extra places were much needed to allow more young children the opportunity to learn and gain social skills before they start school. "There's not enough places for our kids on the Range which means they either have to go off the Range to go to kindy or not go at all," she said.

Brooklyn said it was beneficial for more local kids to begin their education journey together as it helped generate more activity on the Range, established community connection and developed friendly cohorts for later primary schooling.

Getting the go-ahead for extra places was not easy and at one stage, it appeared the kindy would have to install a costly additional toilet to tick all the boxes.

Brooklyn said that after consulting a building certifier and Education Queensland, it was determined that that building's original certification document from 1987 would suffice but nobody knew where it was.

"The original certifier didn't have it. Education Queensland didn't have it," she said. Brooklyn and treasurer Jeshanah Erb searched the building from top to bottom but came up with nothing, but then luck went their way.

"Jeshanah said a prayer, had a dream and came in the next morning and went through a cupboard and there it was," Brooklyn said.



Range Community Kindergarten President Brooklyn Hollis with Nicklin MP Rob Skelton, who drew the raffle, and Treasurer Jeshanah Erb. Kids pictured include Huntington, Archer & Blake.

Brooklyn said that while some of the new places were taken, there were still some vacancies and the plan was to expand to 30 places next year.

The kindy has launched into fundraising to accommodate the expansion and carry out improvements and Brooklyn said \$30,000 in sponsorship, donations and grants had been rustled up. "We're really starting to connect with our community."

Businesses had also kindly donated prizes for a raffle which was well supported.

Drawn on Thursday 3 August, it raised about \$4,500.

Prizes included a stay at The Narrows, two mountain bikes, a Pranafest package, new Dreaming artwork, a Dubbaray sound immersion, New Earth café voucher, Early Bird massage therapy, a Montville Clock Shop clock, a Mapleton Public House voucher, a Ginger Factory family package, a nutritionist package, a Muffin Whole voucher, a business sustainability consultation and a business strategy consultation.

► Prize packages were won by J. Coyle (the Range family package), J. Clegg (the Range experience package), M. Owens (the Range creatives package) and A. McMurray (the Range corporate package).

## Woombye Library welcomes new leadership, expands historical document collection

Woombye Community Library News by Cathy Cash

OUR Community Library held its AGM on July 18 and was well attended by volunteers who enjoyed some delicious catering by our friends at Compass Connections.

Aside from the opportunity for our volunteers to mingle and welcome new co-workers there was some serious business to be done, and I'm pleased to say that the leadership team from 2022 was re-elected with resounding support. Thank you Chris, Jenny and Sharron for all your work in front of and behind the scenes to keep our treasured library running smoothly. We appreciate you!

It has been another busy year for the library with three successful book sales and raffles under our belt, the installation of a new reception desk and shelving courtesy of the Gaming Benefit Fund and hundreds of new book purchases thanks to the support of our funding

partners, especially Council. Plans are also underway to catalogue and display our local historical documents following advice and support from the Nambour Library Genealogy Department and the Treasury of Country Aust History. If any Gazette readers have family documents relating to the early history of Woombye please let us know.

It has been wonderful to see the completion of the local streetscape project and watch the new plants starting to thrive. The green space, seating and water fountain outside the library are being well used and the Heritage Trail markers positioned around the village are very informative. While it's great to see our four legged friends enjoying the new facilities with their owners, please note that for safety reasons we can only welcome registered service dogs into our library rooms.

We look forward to seeing both regular and new borrowers visit us over the coming months as winter draws to a close.

## A glimpse into the lives of King Parrots

Nature Watch by Don McGlusky

SOME time ago we had a few heads of sunflowers in the garden which attracted both King Parrots and Sulphur Crested Cockatoos.

They are common in coastal and timbered mountain areas from far North Queensland down to Victoria. This specimen was photographed from long range as they are very wary and will fly away at the slightest sight of humans. They are found in pairs and in small groups. Their food source consists of seeds, berries, fruit, nuts and blossom. They raid our Loquats and Lychees before they are even ripe. They do cause damage to orchards and some grain crops. Males take up to two years to gain that



Pretty Boy the male King Parrot (*Alisterus scapularis*).

brilliant plumage after a series of moults. Females are much duller as are juveniles. Nesting is from about October to January. The eggs (usually three or four) are laid on a bed of decayed material in the trunk of a large tree, the entrance being very high above ground.



Empowering Women in Need: Maleny Woolworths' Manager Darren Rusk with team member, Courtney Stockhill and the in-store donation box.

## Share the Dignity campaign to help provide period products

WITH the rate of women and girls experiencing homelessness and poverty increasing, *Share the Dignity* is in urgent need of period product donations for their biannual Dignity Drive. This helps ensure that those without a place to call home don't also have to go without period products.

The number of women and girls experiencing homelessness is on the rise with a 10 percent increase reported since 2016 and the majority (40 percent) citing domestic violence as the primary reason.

Unfortunately, when women, girls and people with a period can't afford period products research has shown they leave in period products for longer than recommended or improvise with items like socks, toilet paper, or newspaper.

Share the Dignity is aiming to collect at least 200,000 period products for this initiative.

Throughout August, Woolworths will donate 5 cents from the sale of every period product purchased to help fund Share the Dignity's Dignity Vending Machines, with more than \$2.5 million donated since the partnership began.

Pink collection boxes will also be available in Woolworths supermarkets across Australia for

the donation of period products.

Maleny's Catherine Millett is a volunteer with Share the Dignity and will be helping to collect and distribute the donations in Maleny and across the Sunshine Coast to registered charities.

"Our Dignity Drives are so important to ensure those experiencing period poverty can manage their period with dignity. We rely on these donations to give to charities to ensure the people they support don't have to use unsuitable alternatives. Please, if you can, consider donating pads, tampons, menstrual cups, period underwear, reusable pads or incontinence aids this August," she said.

Supporters can help by dropping off period products at any Woolworths supermarket or a number of nominated businesses nationwide throughout August. Alternatively, you can donate via the Share the Dignity website.

Share the Dignity strongly believes those experiencing period poverty should be able to use their preferred period product, so collect all brands and types of period products in their original packaging including pads, tampons, menstrual cups, period undies, reusable pads, as well as incontinence aids.

## Watch your money grow 4.75%\* p.a.

Secure your savings and grow your money with a fixed 12 month term deposit rate of 4.75% p.a. - minimum investment from \$5,000.

A Bendigo term deposit may be just what you or your business needs to get the most from your money.

Call us on 5442 1311 and lock in your rate today.

Community Bank · Woombye

**B** Bendigo Bank

\*Rate valid at 08/06/2023 and is subject to change, interest paid at maturity. Terms, conditions, fees and charges apply. This information does not consider your financial objectives or needs. You should consider whether this product is appropriate for you. Terms and conditions and TMD available on our website. Bendigo and Adelaide Bank Limited ABN 11 068 049 178 AFSL /Australian Credit Licence 237879. (A1732400-1732176) OUT\_30779041, 08/08/2023

## Hayley knows banking

If you need help with yours, you need to meet Hayley.

Hayley shares knowledge of banking so you can achieve what you want from life.

If you need help with your banking, call Hayley Saunders, Branch Manager on 5442 1311 or search Bendigo Bank Woombye.

**B** Bendigo Bank

Bendigo and Adelaide Bank Limited ABN 11 068 049 178, AFSL/Australian Credit Licence 237879. A1415949 OUT\_30792435 09/08/2023

Community Bank  
Woombye



# Nambour & Hinterland Business Directory

A hidden gem of natural and culinary delights

## Discover Montville's Secrets on the Lake Cafe

by Tanya Outridge

IN 2019 Secrets on the Lake Cafe of Montville was recognized with the AGFG (Australian Good Food Guide) People's Choice Award, and for regular patrons to this hidden gem, there is no secret as to why. "I think our visitors have come to consider this place as a destination because of our location and surroundings, as much as the food and hospitality," said owner, Aldy Johnston.

Secrets on the Lake is nestled at the end of Narrows Road Montville and the deck seems to 'float' among the trees in the lush rainforest canopy, right on the shores of tranquil Lake Baroon.

Diners are surrounded by and intimately connected with nature, from the dappled sunlight flickering through the leafy canopy, to the abundant birdlife. The Deck has been crafted with all the trademark exquisite carvings and attention to detail for which the Johnston family and Secrets on the Lake has become famous.

"There is no doubt that this place has a very special energy," said Aldy.

"But it is not just because of the stunning surroundings. This place is our home and so that is the type of welcome George and I extend to our guests.

"Sometimes we notice that couples arrive and they are quite tense after a long drive. Usually because they have had a row on the Bruce Highway!" she laughed. "George or myself will give them a little tour of the place and chat with them about the history and before you know it, they are smiling and holding hands. They will often tell us that coming here has been the highlight of their trip," she said.

"We have a fabulous tight knit team here and we all offer hospitality in the same way. I think people return again and again and bring their friends and family because they feel welcome and relaxed."

The atmosphere at Secrets is enhanced by the incredible food prepared in-house by Alan and Jon, our head chefs, and their talented team.

"We are very proud of our menu, which changes with the seasons to showcase our fantastic local produce," said Aldy.

"Everything is fresh and flavoursome and I am especially happy with the superb dessert menu our chefs have designed. It is exactly as



Owners Aldy and George Johnston work hard to create a magnificent experience.

I wanted it to be. Every mouthful is just right!"

You can enjoy a delicious range of morning and afternoon tea melt-in-your-mouth sweet treats, including a large array of gluten free options. Secrets is renowned for its stunning high teas, ideal for special celebrations and gathering with friends..

"We can cater for groups of up to 80 people and have some great group packages available," Aldy said.

"I think there may be a perception that only guests of our cottages are able to use the restaurant, but it is open to everyone. We have many repeat diners and diners from Noosa to Brisbane."

Secrets on the Lake's Dining on the Deck Restaurant is also the stunning, night time reception venue for many weddings held at the charming Lakehouse or magnificent Secrets Garden.

"We have a fully licensed bar and are open 6 days a week serving breakfast from 8:30am during the week and 8am on weekends," Aldy



The fish of the day was magnificent barramundi.

said. "Lunch is available from 11am, and we serve champers, coffee and cake until 4pm."

The cafe is closed on Mondays and some public holidays.

"I strongly advise people to book a table, to avoid disappointment," said Aldy. "The last thing we want is for people to miss out."

► Secrets on the Lake is at 207 Narrows Rd, Montville. Phone 5478 5888 for information about how Secrets can help.



The Cafe is renowned for its high teas.



Secrets on the Lake entrance.



Pasture raised, grain fed charred eye fillet.



Brooke McLeary has begun working with owner Juanita Griffin, both are specialists in blonde colouring.

Blonde dream team:

### Specialist joins Peachy G hair salon in Nambour

by Janine Hill

POP into Peachy G at Nambour and you might notice a new face brandishing scissors and a foil.

Brooke McLeary, a blonde specialist, has begun working at the Nambour hair salon on a freelance basis, joining owner Juanita Griffin, another specialist in blonde colouring.

Brooke, a born-and-bred Sunshine Coast local, has 10 years' experience in hair in salons from Noosa to Caloundra.

"It started when I was at high school. It was something I always wanted to do. In year 10, I started a school-based traineeship and I started an apprenticeship after I graduated from year 12," she said.

Brooke is committed to the profession, after having put her passion to the test during a six-month career break.

In that time, she tried studying teaching at university and a couple of other jobs but realised she missed her clients, missed making people feel good, and missed the creativity of working with hair.

She cranked up her career, working as HBBM, which stands for Hair by Brooke McLeary.

"I found my passion again," she said. Brooke discovered Peachy G while attending the gym across the road.

"I saw the products Juanita was using, all natural, organic products. It was something I wanted to get into," she said.

"I went in there and asked her questions and we went from there," she said.

Some of Brooke's regulars have followed her but she is also getting to know new clients. She is offering a 20% discount for her clients during August and September.



### Two Guys Electrical: Father & son duo light up Nambour with reliable 24/7 service

ELECTRICAL issues can strike at the most inconvenient times, leaving you in the dark and scrambling for a reliable solution. In a world where impersonal service and delayed responses are all too common, Two Guys Electrical stands out like a reliable beacon.

The dynamic father and son team of Jarrod and Tyla Guy have made it their mission to deliver top-notch service and expert electrical solutions in Nambour & hinterland.

Jarrod boasts a 30-year career as an electrician, and is the backbone of the venture. Tyla, born and raised in Nambour, recently completed his trade, marking the perfect time for father and son to combine.

The Rosemount-based company brings over three decades of combined experience to tackle any electrical challenge including work for real estate agents, property managers and local aged care providers.

"Whether it's commercial work, renovations, or urgent service calls, our 24/7 availability and personalized approach will help ensure you'll

never be left in the dark again," said Jarrod. "From tackling household faults to working with agents and property managers, we take care of it all," said Jarrod.

When it comes to emergencies, you can rely on them day and night as they are on call 24/7.

"Whether it's a simple service job, a complex renovation, or installing air conditioning split systems, we can help."

Two Guys Electrical's dedication extends to local aged care providers, where they ensure the lights stay on and the power runs smoothly.

"And we're not afraid to tackle the smaller jobs that others might shy away from," said Tyla. Their personalized approach means every client, big or small, receives top-notch service and attention.

"Our mission is to brighten lives and exceed expectations, no matter the challenge."

► 0419 526 503 | jarrod@twoguyselectrical.com.au

## Physios, exercise physiologists unite in new Woombye premises

HINTERLAND Physio Group – formerly Palmwoods Physio – has marked an exciting milestone with the launch of a new practice in beautiful Woombye.

"We are incredibly excited about expanding to a second location," said owner William Hinds at the opening celebration on Saturday (August 12).

"But we aren't taking on this adventure alone. We will be sharing this new clinic with the fantastic team from Connect Exercise Physiology in Woombye."

"We thought it was time for a name change to represent our new service areas covering Palmwoods, Woombye, Kenilworth and Killkivan.

"But it is the same great team, with the same mission of providing our communities with personalised, quality care – just in more places!"

Connect Exercise Physiology has been providing health services to Woombye, Nambour and the surrounding hinterland area since 2014.

"Our exercise physiologists are accredited with Exercise and Sports

Science Australia (ESSA) and are university qualified health professionals that use exercise as medicine," said owner Jesse Ferguson.

"By joining forces with Hinterland Physio Group we'll be able to provide a dynamic, multi-disciplinary centre offering seamless health care pathways.

"Exercise is an effective strategy to improve wellbeing for a variety of health conditions and chronic pain conditions."

► 6 Blackall Street Woombye | [welcome@hinterlandphysiogroup.com.au](mailto:welcome@hinterlandphysiogroup.com.au) | 5478 8500 | 5/12 Hill Street Palmwoods | [connectep.com.au](http://connectep.com.au) | 0432 551 652 | [admin@connectep.com.au](mailto:admin@connectep.com.au)



Joining forces, from left, Hinterland Physio Group physiotherapists Vanessa Atkinson & William Hinds & Connect Exercise Physiology's Jesse Ferguson & Shianne Hammond at Saturday's opening, pictured left.

# Nambour & Hinterland Business Directory

Your Who's Who of Local Businesses 2023-24

Professional Services, Trades, Medical, Automotive, Health & Beauty, Food & Drink, Retail, Education & More

## Everything you need to promote your business for a whole year!

- Editorial-based annual magazine featuring local businesses via compelling stories & attractive pictures.
- 15,000 printed copies + Gazette website, Facebook Post & email blast exposure.
- Professional Services, Real Estate, Trades, Medical, Food & Drink, Retail, Education & more.
- **Special offer:** have your story re-published in the Gazette in addition to all of the above (just like the businesses on these pages).
- Prices from just \$300\*<sup>gst</sup>

Scan the Code for details or phone Tanya 0400 069 711





## Care Centre marks 30 years service

THESE days the Palmwoods Garden Village Care Centre offers 24/7 residential care and a specialist 28-bed Memory Support Unit. It began its life as the Palmwoods Hostel and opened its doors to its first five residents on Thursday April 1, in 1993. The Care Centre, is set in the beautiful tranquil grounds of Palmwoods Garden Village at 61 Jubilee Drive Palmwoods. Last month the centre celebrated its 30th birthday with food and drinks, decorations and memorabilia, high spirits and laughter. "It was a wonderful fun-filled afternoon for our 30th birthday celebrations," said Kath Himstedt. "We had former staff coming from far and wide, as well as some of our original auxiliary members, and of course family and friends attended."



## Mapleton echoes to Wuthering Heights. Event Raises \$4300 for DV

by Janine Hill

HEATHCLIFF might not have been so heartbroken had he attended the Wuthering Heights of Mapleton. There was no shortage of Cathys at the Mapleton Lilyponds on 30 July to mimic Kate Bush in her operatic epilogue to Emily Bronte's romantic classic.

Dozens donned Kate-style red dresses to dance their way through the lyrics of the 1978 hit and enjoy a fun day out.

As Michelle Bull sang, "Heathcliff, it's me, I'm Cathy, I've come home, I'm so cold, let me in your window," Karen Towne, from Cultivate Movement and Mindfulness, led participants in the Wuthering Heights dance.

Organiser Wendy Turton was inspired by the "Most Wuthering Heights Day Ever", a global event where people relive the Kate Bush music video to raise money for charity.

"I'd seen other events out there, always in capital cities, and thought they looked like marvellous fun, so joyful," she said. "Mapleton is a very caring community and I thought they deserved some fun too."

The turn-out proved she was correct. "Almost everyone had something red on. We sold 123 wristbands and then, of course, there were children and people who stopped in to see what it was all about," she said.

More than \$4300 was raised for DV Safe Phone, which provides free second-hand and reconditioned mobile phones to domestic violence victims.

A DV Safe Phone representative said the



Wendy Turton was inspired to relive the Kate Bush music video & raise money for charity.

amount equated to 59 phones.

A jewellery box by Jack Wilms of Obi Valley Woodwork was auctioned for \$500 and a bake sale, driven by Heidi Becker of the Mapleton State School P&C, made \$940.

Wendy thanked the Mapleton and District Community Association, the Blackall Range Lions Club, ShakeItUp Music, MC Michele Gusman, entertainer Miss Bollinger Darling, and other businesses and individuals who contributed sponsorship money, prizes, equipment, help or advice.

A \$2000 Sunshine Coast Council grant made the event possible.

The next Wuthering Heights of Mapleton will be on 28 July, 2024. Go to <https://wutheringheightsofmapleton.au/> or Facebook for information.

**1887 BOTTLESHOP**

Locally Owned and Operated

SPECIALS AVAILABLE FROM 09/08/2023 - 05/09/2023. WHILE STOCKS LAST.

<p><b>MEMBERS OFFER</b></p> <p><b>\$52.99</b> ctn</p> <p>SAVE UP TO \$6</p> <p><b>Hahn Super Dry</b> 4.6% Bottle 24X330ML</p>	<p><b>MEMBERS OFFER</b></p> <p><b>\$59.99</b> 30pk</p> <p>SAVE UP TO \$5</p> <p><b>Great Northern Super Crisp</b> 3.5% Can 30X375ML</p>	<p><b>MEMBERS OFFER</b></p> <p><b>\$51.99</b> ctn</p> <p>SAVE UP TO \$13</p> <p><b>Heineken</b> Bottle 24X330ML</p>	<p><b>MEMBERS OFFER</b></p> <p><b>\$54.99</b> ctn</p> <p>SAVE UP TO \$8</p> <p><b>Balter XPA Can</b> 16X375ML</p>	<p><b>MEMBERS OFFER</b></p> <p><b>\$57.99</b> ctn</p> <p>SAVE UP TO \$7</p> <p><b>Coopers Pale Ale Bottle</b> 24X375ML</p>	<p><b>MEMBERS OFFER</b></p> <p><b>6 for 80</b></p> <p>SAVE UP TO \$16</p> <p>MIX YOUR OWN CARTON!</p> <p><b>Mix &amp; Match</b> Carton: Any 6 of the Vodka Cruiser 4x275ML Range</p>	<p><b>MEMBERS OFFER</b></p> <p><b>\$54.99</b> 10pk</p> <p>SAVE UP TO \$8</p> <p><b>Jim Beam Black Double Serve</b> Bourbon &amp; Cola 6.9% Can 10X375ML</p>	<p><b>MEMBERS OFFER</b></p> <p><b>\$60</b> each</p> <p>SAVE UP TO \$11</p> <p><b>Kraken Spiced Rum</b> 700ML / Kraken Roast Coffee Spiced Rum 700ML</p>
---	---	---	---	--	--	---	---

<p><b>MEMBERS OFFER</b></p> <p><b>\$60</b> each</p> <p>SAVE UP TO \$15</p> <p><b>Woodford Reserve</b> Bourbon 700ML</p>	<p><b>MEMBERS OFFER</b></p> <p><b>\$78.99</b> 1LT</p> <p>SAVE UP TO \$13</p> <p>GET A BONUS 400 REWARDS POINTS*</p> <p><b>Makers Mark</b> Kentucky Straight Bourbon Whisky 1LT</p>	<p><b>MEMBERS OFFER</b></p> <p><b>\$60</b> each</p> <p>SAVE UP TO \$5</p> <p><b>Singleton Dufftown Malt</b> Master 700ML</p>	<p><b>MEMBERS OFFER</b></p> <p><b>\$51.99</b> each</p> <p>SAVE UP TO \$9</p> <p><b>Jack Daniels</b> Tennessee Whiskey 700ML</p>	<p><b>MEMBERS OFFER</b></p> <p><b>\$72</b> each</p> <p>SAVE UP TO \$20</p> <p><b>Glenfiddich Malt</b> 12Yo 700ML</p>	<p><b>MEMBERS OFFER</b></p> <p><b>\$60</b> each</p> <p>SAVE UP TO \$18</p> <p><b>Roku Gin 43%</b> 700ML</p>	<p><b>MEMBERS OFFER</b></p> <p><b>\$48</b> each</p> <p>SAVE UP TO \$10</p> <p><b>Absolut Vodka</b> 700ML &amp; Range</p>	<p><b>MEMBERS OFFER</b></p> <p><b>\$18.99</b> each</p> <p>SAVE UP TO \$12</p> <p><b>Grant Burge</b> Sparkling Pinot Chardonnay 750ML &amp; Range</p>
---	--	--	---	--	---	--	--

<p><b>MEMBERS OFFER</b></p> <p><b>\$13.99</b> each</p> <p>SAVE UP TO \$6</p> <p><b>Brown Brothers</b> Prosecco NV 750ML &amp; Range</p>	<p><b>MEMBERS OFFER</b></p> <p><b>3 for 23</b></p> <p>SAVE UP TO \$6</p> <p><b>Jacobs Creek</b> Sauvignon Blanc 750ML &amp; Range</p>	<p><b>MEMBERS OFFER</b></p> <p><b>2 for 26</b></p> <p>SAVE UP TO \$10</p> <p><b>Matua Valley Marl</b> Sauvignon Blanc 750ML &amp; Range / Secret Stone Sauvignon Blanc 750ML &amp; Range</p>	<p><b>MEMBERS OFFER</b></p> <p><b>\$14.99</b> each</p> <p>SAVE UP TO \$6</p> <p><b>Giesen Pinot Gris</b> 750ML &amp; Range</p>	<p><b>MEMBERS OFFER</b></p> <p><b>\$18.99</b> each</p> <p>SAVE UP TO \$6</p> <p><b>Robert Oatley</b> Signature Yarra Valley Pinot Noir 750ML &amp; Range</p>	<p><b>MEMBERS OFFER</b></p> <p><b>\$16.99</b> each</p> <p>SAVE UP TO \$21</p> <p><b>Grant Burge Miamba</b> Shiraz 750ML &amp; Range</p>	<p><b>MEMBERS OFFER</b></p> <p><b>\$17.99</b> each</p> <p>SAVE UP TO \$9</p> <p><b>Jacobs Creek</b> Double Barrel Shiraz 750ML &amp; Range</p>	<p><b>MEMBERS OFFER</b></p> <p><b>\$15.99</b> each</p> <p>SAVE UP TO \$5</p> <p><b>Wynns Coonawarra</b> Cabernet Shiraz Merlot 750ML &amp; Range</p>
---	---	--	--	--	---	--	--

## ALL UNITS IN STOCK AND READY FOR DELIVERY

<p><b>POLARIS MY23 RANGER DIESEL HD EPS ADC</b></p> <p><b>\$31,995</b></p> <p>Drive Away</p> <p><b>\$2000</b> worth of free accessories*</p> <p>24.8 HP ON DEMAND TRUE ALL-WHEEL-DRIVE (AWD) VERSATRAC TURF MODE</p> <p>1,134KG TOWING CAPACITY DUMP BOX CAPACITY 435KG DONALDSON AIR FILTER 6 PLY TYRES HEAVY DUTY FEATURES ENGINE BRAKING SYSTEM &amp; ACTIVE DESCENT CONTROL (ADC) HONDA</p>	<p><b>POLARIS MY22 RZR 200 EFI</b></p> <p><b>\$10,495</b></p> <p>Drive Away</p> <p>4 STROKE ENGINE - 180CC PASSCODE PROTECT POLARIS VARIABLE TRANSMISSION</p> <p>SAFETY FLAG TWO APPROVED YOUTH HELMETS DISC BRAKES FRONT &amp; REAR ELECTRIC START ELECTRONIC FUEL INJECTION HELMET AWARE TECHNOLOGY</p>	<p><b>POLARIS MY23 RANGER 1000 EPS</b></p> <p><b>\$21,995</b></p> <p>Drive Away</p> <p><b>\$1000</b> worth of free accessories*</p> <p>61 HP HIGH PERFORMANCE ON DEMAND TRUE ALL-WHEEL-DRIVE (AWD)</p> <p>VERSATRAC TURF MODE DUMP BOX CAPACITY - 454KG ELECTRONIC POWER STEERING 1,134KG TOWING CAPACITY IRS WITH 25.4CM OF TRAVEL</p>
<p><b>POLARIS MY23 RANGER CREW SP 570 PREMIUM</b></p> <p><b>\$24,495</b></p> <p>Drive Away</p> <p><b>\$1000</b> worth of free accessories*</p> <p>44 HP ProStar 570 Engine 880kg Towing Capacity 226.8kg Gas-Assist Dump Box 26.57cm Ground Clearance LED Headlights 22.86cm Front / 25.4cm Rear Suspension Travel 5m Turning Radius</p>	<p><b>POLARIS MY22 RANGER 1000 PREMIUM</b></p> <p><b>\$24,995</b></p> <p>Drive Away</p> <p><b>\$1000</b> worth of free accessories*</p> <p>Electronic Power Steering Large Steel Bumper with PLOW and Winch integration 26 in. PXT 2 Tires 12" Aluminium Black Xcelerator Wheels Cut &amp; Sew &amp; 2.54cm Thicker Seats Adjustable Seat Slider Premium Automotive Paint New LED Headlights</p>	<p><b>POLARIS MY23 RANGER CREW 1000 PREMIUM</b></p> <p><b>\$29,495</b></p> <p>Drive Away</p> <p><b>\$1000</b> worth of free accessories*</p> <p>61 HP HIGH PERFORMANCE ON DEMAND TRUE ALL-WHEEL-DRIVE (AWD)</p> <p>VERSATRAC TURF MODE DUMP BOX CAPACITY - 454KG ELECTRONIC POWER STEERING 1,134KG TOWING CAPACITY IRS WITH 25.4CM OF TRAVEL SEATS 6</p>

**POLARIS** SUNSHINE COAST POLARIS | 46 Wisers Rd, Buderim QLD 4556  
P. 07 5442 0660 | [www.sunshinecoastpolaris.com.au](http://www.sunshinecoastpolaris.com.au)

Offer ends 31/08/23 or while stocks last. Offer only available at participating Polaris Dealers. Not valid with any other offer. Excludes fleet clients. Selected units have accessory offers: MY23 Ranger Diesel HD EPS ADC includes \$2,000 worth of accessories. MY23 Ranger 1000 EPS includes \$1,000 worth of accessories. MY23 Ranger Crew SP 570 Premium includes \$1,000 worth of accessories. MY22 Ranger 1000 Premium includes \$1,000 worth of free accessories. MY23 Ranger 1000 Premium includes \$1,000 worth of accessories. Accessory offers are only valid with the purchase of a new MY23 Ranger Diesel HD EPS ADC, MY23 Ranger 1000 EPS, MY23 Ranger Crew SP 570 Premium, MY22 Ranger 1000 Premium or MY23 Ranger Crew 1000 Premium.

**MORE GREAT OFFERS LIKE THESE IN STORE! COME IN TODAY!**



### Beautiful birds turn up for Bushcare Action Bee

Bushcare News with Norm Morwood

PICTURED is a Grey Fantail, captured on film by Kel Callaghan at our Action Bee on 05 August at our BushCare site beside Petrie Creek near the Woombye Rugby Grounds.

The birds and other animals are enjoying the native habitat we've been restoring there. If you'd like to join in, the next opportunities are as follows.

- Namba Creek on Saturday 19 August 2023 starting at 8am. (meet in The Model Railway Park off Florence St Nambour)
  - Gulung Gung on Wednesday 23 August 2023 starting at 8am. (Parking is available in the NE part of Aldi Carpark in Howard St Nambour and then walk down to the creek by following the rough track that skirts the north of the carpark. Alternatively walk across the new park from Quota Park off Matthew St)
- To join in the activities at these events you'll need to come in "long everything" bush protective clothing including boots/shoes and a hat. All tools required will be provided.
- Then at around 10am we'll finish with a well-deserved cuppa.
- For more see the Petrie Creek Catchment Care Group Facebook page or [www.sunshinecoast.qld.gov.au/bushcare](http://www.sunshinecoast.qld.gov.au/bushcare) or contact Norm Morwood 0409 63 99 44 or email [normmorwood@gmail.com](mailto:normmorwood@gmail.com).

### Music with a message, live at Ignite Auditorium

LIVE at the Chapel Nambour is a free, monthly, live music event hosted by Ignite Church and run by the team at Aussie Grown Radio.

The venue is in the heart of town at 29 Short Street and our next event will be held on Saturday, 2 September commencing at 6pm until around 8pm.

Brendon and Cathie Clancy headline the September event. The local artists have been leading praise and worship in churches for over 30 years in Australia and in over 25 countries around the world.

Support artist is Brisbane singer songwriter Nicole Spowart.

Since releasing her debut album back in 2013, Nicole has concentrated on her worship songwriting, while still bringing a contemporary pop feel to her music.

For more information check out the Live at the Chapel Nambour facebook page.

### Ground Zero Exhibition at Old Ambo

A local visual and visionary artist group is staging an exhibition at the Old Ambulance Station Gallery in Nambour.

The "Ground Zero Exhibition 2" opened August 12 and runs until August 20.

It showcases the Underground Music and Sound System culture on the Sunshine Coast.

This exhibition features some of the talented local SubBass Live artists including: Artifakt; Burko; ElfInTreast; Herbrobert; Krystina Gray; LuQuest; Shmick; SketchD; Strung Serpent; and the Hex Sound System.

SubBass events showcase local, state and interstate bass music DJs, producers and live visual artists.

The aim is to unearth musical gems and visual storytelling in an immersive encounter that celebrates creativity without boundaries.

### Women's Adventure Film series screens at Majestic

A series of films celebrating women in sport will screen at Majestic Cinemas Nambour as part of an Australian Tour in September.

The Women's Adventure Film Tour features seven new short films that showcase the inspiring journeys of women who have pursued adventure in various fields.

For more information, media inquiries, and tour schedule, please visit [www.womensadventurefilmtour.com](http://www.womensadventurefilmtour.com). Nambour screenings September 14 at 7pm.



Glambour is the launch party for two exhibitions at The Old Ambo: *Unapologetically Dressed* and *Nonsensual*.

## Festival to light up Nambour with art, glamour, creativity

NAMBOUR'S Old Ambo will be buzzing with creativity during the much-anticipated Horizon Festival from 25 August to 3 September. The arts and culture celebration showcases a range of events to highlight the essence of Nambour and its thriving art scene.

Kicking things off is the dazzling *Glambour* launch party, on Saturday, August 26, from 6pm to 9pm. The Old Ambo will be transformed into a glitzy hub of glamour and music. Guests are encouraged to dress up and join in the lip-synch battle for an evening of fun and extravagance.

The event is to launch *Unapologetically Dressed* and *Nonsensual*, two exciting free exhibitions on show throughout the festival from August 26 – September 3.

*Unapologetically Dressed* exhibition showcases the unique street style of Nambour. It captures the eclectic and unapologetic fashion offerings found in Nambour's streets and

celebrates the Coast's self-proclaimed "fashion capital" with the same flair as Vogue does for New York. Register for the free artist talk on 26 August.

*Nonsensual* is a fun, colourful and absurd exhibition. Expect to find a non-censored, non-sensical art display featuring Fat Dog, Spirit You and Jordyn Burnett.

Meanwhile, Art lovers and skateboarding enthusiasts can unleash their creativity in the Skateboard Art Workshop on August 31 at 6pm. Participants will have the opportunity to design and paint their own skateboard. The workshop welcomes individuals, couples, or friends looking for an artistic and engaging experience.

**► Horizon is a 10-day multi-arts festival from 25 August to 3 September in locations right across the Sunshine Coast. To view the full program and book tickets, head to [horizonfestival.com.au](http://horizonfestival.com.au)**

### Maleny Garden Club Spring Fair: A horticultural delight

CALLING all gardening enthusiasts. The much-anticipated Maleny Garden Club Spring Fair is back on October 7 from 9am to 4pm at the Maleny Showground Pavilion.

Explore the Garden Market with its diverse selection of plants, produce and treasures from independent nurseries. Engage with gardening experts for valuable insights. Indulge in delightful morning and afternoon teas, along with satisfying lunches.

For just \$5 per garden, venture into Open Gardens, accessible via tickets available at the Spring Fair Garden Market. Payment is by Eftpos or Cash at Garden Market (No Cash Out). Please note, cash-only entry for gardens on site if tickets not purchased at the Garden Market. Kids up to 16 enter free.

Art lovers will also enjoy sculptures and pottery exhibitions. Don't miss this opportunity to revel in a horticultural haven in Maleny.

Contact [gardeningontheedge@hotmail.com](mailto:gardeningontheedge@hotmail.com) or 0476 109 872 or visit [www.facebook.com/malenygardenclub](http://www.facebook.com/malenygardenclub).

### Caravan and Outdoor Expo this weekend

IF you are considering caravanning then check out the 2023 Sunshine Coast Caravan and Outdoor Expo at the Nambour Showgrounds to get a sense of what living or holidaying on the road is all about.

With over 90 exhibitors, the August 18-20 Expo will be displaying the latest products and gadgets on offer, alongside all things outdoors for those seeking to opt into the RV or caravan lifestyle. Caravan Trade and Industries Association of Queensland CEO Jason Plant said the expo was great for residents to see current options available in one location, speak with experts and find great deals.

The expo also features popular daily demonstrations including the Walkabout Working Dogs herding sheep, Bush Cook Ranger Nick sharing his campfire recipes and the popular Weight and Towing Masterclasses.

Gates will be open from 9am to 5pm on Friday and Saturday, and 9am to 4pm on Sunday. Tickets via Oztitx.



Zontians Linda McElrea, left, and Lyndel Grant.

### Green thumbs team up at kiosk and Spring Fair

IF you miss the wonderful Zonta Club of Blackall Range gardening team at the Maple Street kiosk on September 5 come and say hello at the Spring Fair on October 7 at the Maleny Showgrounds.

"We are raising funds for our local projects supporting women and girls in our community," said Linda McElrea. "There will be lots of great plants for your gardens, for pots and plenty of hanging baskets."

### Call for auditions for Little Village Christmas concert

AUDITIONS are called for performers for a Community Concert to be held at Palmwoods School hall on December 17, 2023. This concert is part of the Palmwoods' A Little Village Christmas' free community event sponsored by Heritage Palmwoods Community Branch and organised by Palmwoods Christmas Committee, a sub-committee of Little Village Choir Inc.

Auditions take place 10 September from 9.30am at Palmwoods Girl Guide Hut, cnr Lingara Avenue & Montville-Palmwoods Road.

Requirements: Must adhere to Christmas theme. Please bring own instrument (eg guitar) and backing track music on phone, iPad or USB stick.

Performers please respond to [palmwoodschristmascommittee@gmail.com](mailto:palmwoodschristmascommittee@gmail.com) by September 6 with name, contact phone and email, and style of performance.



### Yandina Country Music welcomes Allan Reed

YANDINA welcomes guest artist Allan Reed to the ACMA concert on Sunday 20th August. Allan's energy and great range of songs guarantee entertainment!

You'll also enjoy popular country music and other upbeat, crowd-pleasing favourites from local artists backed by a great house band. See you at the Hall of Fame, 24 Steggalls Road, 12 noon start. Raffle and door prizes, byo lunch, free tea and coffee. Entry \$8.

- Enquiries 0437 191004.

### Learn to trace your family history at beginner classes

GENEALOGY Sunshine Coast is holding Beginner Classes on how to do your family history for 3 consecutive Wednesdays beginning on the 30th August, 6th September and 13th September from 9:30am-3:30pm with instruction in the mornings and hands on practice in the afternoons. The topics will be: How and where to Start, How and where to Research records, basic DNA and helping you solve brick walls.

The cost is \$10 per day and bookings can be made on 07 5329 2315 or email to [genealogysc@gmail.com](mailto:genealogysc@gmail.com). More information can be obtained from Nerida on 0412 705 749. Morning tea will be available and lunch can be purchased or bring your own.

### Upcoming 'Off the Shelf' Art Sale at Craft Cottage

AN "Off the Shelf" Art Sale at Buderim Craft Cottage is offering an exceptional opportunity to purchase art by talented local artists at bargain prices.

Artists declutter their studios, all to your benefit. The gallery will be full. You will find something you love from the large range. Love it. Buy it. Take it, to transform your surroundings. At 5 Main Street Buderim. Buderim Craft Cottage, Friday 22 to Sunday 23 September. 9am to 3pm.

### Sunday arvo Bowls, Beers & Burgers at Woombye

LOOKING for something to do on a Sunday afternoon? Woombye Bowls Club is running a Burger, Beer and Bowls afternoon on Sunday August 20 from noon.

Join them for a relaxing and enjoyable afternoon of barefoot bowls in the winter sunshine with a steak burger, beer/wine or soft drink. It's \$10 for children aged 8-16 and \$20 for adults.

It's a social afternoon, so everyone is invited. Come barefoot or in thongs or flat-soled shoes. Bowls and instructions are both available on the day.

Bookings are essential so phone the club on 5294 5245.

### The Australian Voices returns to Maleny

"WHAT an extraordinary performance this afternoon at the Maleny Community Centre from The Australian Voices! I have never had such goose bumps or been so moved. Beautiful!" (Audience member 2021)

Maleny Arts Council are thrilled to welcome The Australian Voices back to Maleny. Join us for an afternoon of beautiful voices and sublime music. Sunday 20 August 2pm. Bookings and further information [malenyartscouncil.com](http://malenyartscouncil.com).

### September 1-30: Museum Mystery Madness Month

VISIT Buderim Pioneer Cottage during September, and you will have the opportunity to win a prize. During Museum Mystery Madness Month, sponsored by Sunshine Coast Council Heritage, we invite participants to complete a quiz. You will discover the answers somewhere in the Cottage. A great place to visit in the school holidays.

Find us at: 5 Pioneer Crescent, Buderim 4556 Open: Monday to Saturday, 11am to 3pm.

## What's On Day by Day in the Hinterland

Local Events and Entertainment coming up. Preference given to local events of widespread interest. Please check details with organisers. Contact editor@sunshinevalleygazette.com.au.

#### MARKETS

Every Thursday 8am-2pm: **Nambour Town Markets** return to Lowe and Short Streets, Nambour, featuring fresh food, handmade wares and vintage bric-a-brac. Contact Wayne on 0409 115 283 for stall inquiries.

- Every Saturday: **Yandina Country Market** from 6am to 12pm, North Street, Yandina.
- Every Saturday: **Kenilworth Country Markets** from 8am to 1:30pm at Kenilworth Town Park, Charles Street.
- Every Sunday: **Maleny Art, Craft and Collectables Markets** 8am to 2pm Maleny RSL.
- Second Saturday of the month: **Montville Growers & Makers Market**, 7am to 12 noon at the Village Hall. Enquiries: Liz 0424 042 376 or Visit [montvilleillageassociation.org.au](http://montvilleillageassociation.org.au).
- Yandina** Second Saturday Handmade and Vintage Market from 8-noon every month at the Yandina School of Arts hall. Enquiries: Lyn 0407 828 431.
- Third Saturday of the month: **Witta Growers Markets**, 7.30am-12noon, 50+ stalls, enquiries: [wittamarket@gmail.com](mailto:wittamarket@gmail.com).
- Fourth Saturday of the month: **Mapleton Country Markets** at Mapleton School.

- Nambour Rummagers Market** Every Second Month, Sunday 9am to 1pm at Nambour Tram Co, 28 Mill Street, Nambour. Handmade, pre loved and vintage treasures. [rummage@NambourTram.com.au](mailto:rummage@NambourTram.com.au)
- September 1-30: **Museum Mystery Madness Month** - Visit Buderim Pioneer Cottage, complete the quiz, and have a chance to win a prize. Open Monday-Saturday, 11am-3pm.
- September 2: Live at the Chapel Nambour**



August 20: Yandina Street Fair - food trucks, stall, music and entertainment.

#### AUGUST:

- August 16: Suncoast Christian College Open Morning.** Book your spot to explore the new purpose-built Primary Precinct via [www.suncoastcc.qld.edu.au/open-morning](http://www.suncoastcc.qld.edu.au/open-morning).
- Until August 20: Ground Zero Exhibition** at Old Ambo - Discover the Sunshine Coast's Underground Music and Sound System culture. Featuring local SubBass Live artists. Old Ambulance Station Gallery, Nambour.
- August 18-20: Sunshine Coast Caravan and Outdoor Expo** at Nambour Showgrounds. Discover RV and caravan options, gadgets, outdoor gear, demos, and deals. Gates open 9am-5pm Fri-Sat, 9am-4pm Sun. Tickets via Oztitx.
- August 19: Rugby League, SCGR** Round 18 at 6pm, Kawana A Grade Men v Nambour.
- August 19: FQPL3 Football**, Nambour-Yandina United v Coolool at 6pm at Yandina.
- August 20: Australian Voices** ensemble performs at Maleny Community Centre. Tickets via [www.malenyartscouncil.com](http://www.malenyartscouncil.com). Concert 2pm Sunday 20 August.
- August 20: Yandina Street Fair** - food trucks, stall, music and entertainment. Family-friendly event from 11am to 7pm, showcasing Yandina's identity. Attractions include a Sizzler, Super Slide, Cup & Saucer, Jumping Castle, RockWall, Face Painting, Glitter Nails, Petting Zoo, Roving Puppeteers, Stilt Walkers, Caricature Artist, Stephen Hollis as 'Silver Steve' the street performer and a Magician.

### Now Showing at Majestic Cinemas

HERE'S what's showing now at Majestic Cinemas in C-Square Nambour.

Now Showing: *Barbie* (Margot Robbie and Ryan Gosling); *Oppenheimer* (Cillian Murphy and Emily Blunt); *Gran Turismo* (Orlando Bloom); *The Miracle Club* (Maggie Smith); *Asteroid City* (Director Wes Anderson).

Also from August 17 *Rachel's Farm* (an Australian Documentary) and *Strays* (comedy starring Will Ferrell).

We also have the International Film Festival on from August 31st featuring 5 wonderful films.

Tickets on sale now.

- For more information on Majestic Cinema's session times please visit [www.majesticcinemas.com.au](http://www.majesticcinemas.com.au) or phone 5441 2954.

- August 20: Sunday Arvo Bowls, Beers & Burgers at Woombye** - Enjoy a relaxed afternoon of barefoot bowls, burgers, and drinks. Woombye Bowls Club, noon. Bookings essential: 5294 5245.
- August 20: Yandina Country Music** welcomes Allan Reed - Enjoy live country music with guest artist Allan Reed and local performers. Hall of Fame, 24 Steggalls Road. 12 noon start. Entry \$8. Enquiries: 0437 191 004.
- August 25:** Get-together lunch at Stonebridge for participants (own cost). RSVP to [genealogysc@gmail.com](mailto:genealogysc@gmail.com) or 07-5329-2315 for menu choice.
- August 25 to September 3:** Horizon Festival multi-arts celebration that features home-grown and international talent: visual art, music, theatre, dance, words and ideas, film and creative workshops at various locations. [horizonfestival.com.au](http://horizonfestival.com.au)
- August 26:** Genealogy Sunshine Coast Open Day. Explore our library resources and get help from volunteers. Southern QLD's great family history collection.
- August 26:** Mapleton Country Market in the school grounds.
- August 26:** Football FQPL Woombye Snakes v Noosa Lions at Woombye, 6pm.
- August 31:** Free Fighting Food Waste session with Michele Lipner, OzHarvest founder. Learn meal planning, reduce waste, help those in need. Nambour Library, 10-11:30am. Register on Sunshine Coast Libraries website.

**SEPTEMBER:**

- September 1: Killer Queen Experience** at Palmwoods Hotel from 8.30pm. Free entry. Bookings 0409 900 303.
- September 1-30: Museum Mystery Madness Month** - Visit Buderim Pioneer Cottage, complete the quiz, and have a chance to win a prize. Open Monday-Saturday, 11am-3pm.
- September 2: Live at the Chapel Nambour**

experiences Brendon and Cathie Clancy, experienced praise and worship leaders. Venue: Ignite Auditorium, 29 Short Street. 6pm-8pm. Facebook: Live at the Chapel Nambour.

- September 2: Fund-raising afternoon** tea by Restoring Hope Parkinson's Therapy at Flaxton Barn. Prizes, auction, and support for Parkinson's programs. Details at [www.rhpthrapy.org.au](http://www.rhpthrapy.org.au).
- September 2: Invasive Plants and Animals Workshop** at Obi Obi Hall. Learn to combat invasives on your property. Expert talks, native plant giveaway. Register on Eventbrite.
- September 5: Zonta Club of Blackall Range gardening team at Maple Street kiosk.
- September 8-10: KickAss Festival** in Kenilworth. Headlined by James Reyne, with The Beautiful Girls, Kingswood, Dragon, and more. Tickets available at Ozitx. Info: [www.kickass-festival.com.au](http://www.kickass-festival.com.au).
- September 10: Auditions** for Palmwoods' A Little Village Christmas' concert. Performers needed. Adhere to Christmas theme. Bring own instrument and backing track. Contact [palmwoodschristmascommittee@gmail.com](mailto:palmwoodschristmascommittee@gmail.com) by September 6.
- September 14: Women's Adventure Film Tour** showcasing inspiring journeys of women in sport. Majestic Cinemas Nambour, 7pm. Details at [www.womensadventurefilmtour.com](http://www.womensadventurefilmtour.com).



## 'Unapologetically Dressed' Exhibition captures Nambour's fashion sense

UNAPOLOGETICALLY Dressed is an exhibition that is part of the Horizon Festival. The idea was born out of Mill Street Fashion Walk – an Instagram page that documents fashion on the streets of Nambour.

It is the brainchild of Ketakii Jewson-Brown and Shaye Hardsity of ShayeKet Productions. They began scouting out the street style of Nambour back in 2019. As the tongue-in-cheek "fashion capital of the Sunshine Coast", Nambour's streets showcase a visual smorgasbord of eclectic, unapologetic and unique offerings daily.

Through sideways glances and "Excuse me" moments, and thanks to obliging members of the public, *Unapologetically Dressed* is to Nambour what Vogue is to New York.

### The following is an interview with Ketakii and Shaye.

Q. If you had to describe this project to someone you didn't know, what would you say?  
A. A dive into Nambour Street fashions and the people behind them.

Q. How would you 'sell' the experience?  
A. Love fashion, street style and the grit and glamour of Nambour? Come along to The Old Ambulance Station and check out ShayeKet Productions' video piece highlighting all the above and more.

Q. Who will love your project?  
A. Anyone who wears clothes

Q. What are you looking forward to most about Horizon Festival?  
A. The lip synch battle that's part of Glambour and Blak Laundry in Maleny.

Q. Where do you live?  
A. Both of us are hinterland dwellers, Shaye in Mapleton and Ketakii lives in Maleny

Q. Where do you work?  
A. Out of a shared studio space in Nambour called 2nd space

Q. Why do you personally choose to create on the Sunshine Coast?  
A. Because we live here and we love it!

Q. Favourite Sunshine Coast location?  
A. One of the beautiful lookouts along the hinterland where you are surrounded by nature with a

killer view or one of Nambour's side streets covered in street art

Q. How would you describe yourself as an artist?  
A. Eclectic, playful, deep

Q. How would you describe your work / practice to others?  
A. Our collaborative work is a mash up of Ket's photography and Shaye's textile art with an accent of street fashion and videography

Q. How would those closest describe you in 1 sentence?  
A. Kind, fun, creative

Q. What changes in the SC art landscape have you noticed in the past few years that you're excited by?  
A. It feels like the arts and culture sector on the coast is growing and strengthening. We have made a lot of connections and love the sense of belonging we feel here.

Q. As a regional location, how does it compare to the rest of Australia and/or overseas?  
A. We may be lacking in great public transport but we make up for it in almost every other aspect – pristine natural surroundings, great food and coffee, fantastic arts scene and galleries, community feel and relaxed atmosphere

Q. What or who is the most exciting act you've experienced on the Sunshine Coast in the past year?  
A. Randy Felface at Woodford Folk Festival.

Q. What support have you received locally, especially in the past couple of years?  
A. We were both a part of The Refinery in 2021, Ketakii took part in the Path with Kellie O'Dempsey that year also. We have secured 2 RADF grants and a RAF grant for our project "The Sunshine Coat".

Q. Which Sunshine Coast artist are you most inspired by?  
A. Very much inspired by the lovely Fiona Harding aka Spirit You. She is a bright beam of pure sunshine. Also inspired by the unapologetic and authentic approach to photography of both Kim Guthrie and Warwick Goo.

► **Unapologetically Dressed runs from Saturday 26 August to Sunday 3 September at the Old Ambo from 10am-3pm. There will be a free Artist Talk at 10am on Saturday 26 August.**

### FUNDRAISING CELEBRATION

DONATIONS MADE BY LOCAL BUSINESSES WILL BE AUCTIONED

All funds raised go to the charity restoring hope Parkinson's therapy

**Saturday 2 Sept 2023 3:30 PM**  
The Barn on Flaxton

\$15 per person, includes coffee & cake  
Please pay at the door, card facilities will be available

RSVP [info@rhpthrapy.org.au](mailto:info@rhpthrapy.org.au) by 26 August

Thank you to The Barn on Flaxton for being our hosts and providing the coffee & cake

### MADCA

Connecting community

Why are we asking your opinion...  
Parking in Mapleton has been identified as an issue in the community. There are concerns insufficient parking in the village is negatively impacting local businesses and customers

By understanding the parking dynamics within the community, informed decisions can be made to improve parking infrastructure and enhance the overall usability of our village.

Scan Me

To access the survey, scan the QR code above.

## Your Opinion Matters...

# PARKING SURVEY

**1<sup>st</sup> August to 31<sup>st</sup> August, 2023**

For more information about this survey go to: [www.madca.com.au/news/parking.html](http://www.madca.com.au/news/parking.html)



## Beyond the Norm:

The benefits of abdominal massage for your gut health

Wellness with Linda Goggan, Sacred Body Montville

PICTURE yourself getting a massage. You can almost feel the therapist's hands working those knots out of your neck and shoulders right now. I bet you didn't picture having an abdominal massage though.

Abdominal massage is a practice that has been used for centuries yet is not often incorporated into a full body massage these days. Primarily supporting the digestive system and alleviating gut-related pain, there are many other surprising health benefits of regular abdominal massage.

Massage therapists have access to a variety of painless, non-invasive treatments including abdominal massage, which is a gentle form of massage that aims to soothe and treat the muscles that surround the belly.

Constipation, bloating, and tight muscles are just a few of the symptoms that can be treated with an abdominal massage. With its ability to relieve stress and pain in the stomach, digestive system, and reproductive organs, including the pelvic floor, abdominal massage can benefit both physical and emotional health.

**Some other benefits include:**

- Boosts immune function - as a healthy gut

that eliminates efficiently supports a healthy immune system

- Improves posture - as this supports the health of the abdominal muscles allowing them to move with ease
- Releases physical tension and emotional stress - because massage relaxes you, your nervous system can function normally and you'll feel calmer both inside and out. Exerting physical pressure on the stomach helps to loosen any physical tightness brought on by mental stress.
- Alleviate PMS - Abdominal massage works as a natural pain reliever for PMS and associated symptoms by easing stomach and pelvic floor muscles, reducing muscle spasms and elevating mood.

At Sacred Body we have incorporated the abdominal massage into our Signature Massage with some peppermint oil for a little extra digestive support as we understand just how important gut health is.

So next time you book a massage ask your therapist to include an abdominal massage and begin to feel the deeper level of relaxation and digestive health.

► **Sacred Body, 4/130 Main St, Montville. Phone 0422 852 899.**



Mayfield guest house in the 1930s. Now but a memory, the simple pleasures guests enjoyed serve as an inspiration for us even today (Pic: Public Domain). Below: A 1936 advertisement for Mayfield from the Nambour Chronicle.

## Montville's guest house: Memories of Mayfield

by Gordon Plowman

FOUR quality guest houses once accommodated the many visitors and holiday makers who came to Montville to breathe the mountain air and immerse themselves in the wondrous beauty of the Blackall Range. Dart's Mayfield guest house on the Flaxton side just before the town was one of these.

The facilities at Mayfield are best described in an advertisement in the Nambour Chronicle in 1931. As the ad says, the guest house has electric light and hot water, luxuries most North Coast residents could only dream of at the time.

An article in the Nambour Chronicle in 1936 describes some of the many activities and entertainments available for the guests:

"The days were spent in golfing, tennis, bowls and picnics to various waterfalls and beauty spots on the Blackall Range. The evenings were spent in dancing, music, cards and games."

Almost mandatory during a stay was a walk cross-country to Pulpit Rock. The spectacular views from this natural feature look over Bon Accord (now Kondalilla) Falls, over the Picca-



been Grove and across the forest canopy to the Mary Valley in the blue distance.

A stay at Mayfield held one other special surprise - Monte Dart's gladioli farm. Reported to have grown 300 varieties of these showy blooms, the sight of row upon row of his stately flowers created a memory never to be forgotten.

His blooms filled vases and jardinières in foyers and halls at Mayfield, in Brisbane theatres and at numerous wedding venues. Dart's blooms once decked the halls of Parliament House for the visit of the Duke of Gloucester.

The Mad Hatter's Tea Parties and musical evenings which once filled Mayfield with music and laughter are long past. But the old-fashioned camaraderie and the enjoyment of simple pleasures, now but a memory, serve as an inspiration for us even today.



There is no headstone/ memorial in place for William's site.

## Lest we forget: the story behind WWI soldier's unmarked Nambour grave

History article by Kathryn Simpson

RETURNED World War One soldier and Noosa 'hermit' Frank Parr of the 2nd Australian Remount Unit lies in an unmarked grave in the Nambour Garden Cemetery.

In Noosa, Frank was known as a polite, eccentric and reclusive former journalist. He died without family or friends in Nambour hospital on 19 July, 1962 from cerebral haemorrhage, age 75.

Frank Parr, a station book-keeper, was rejected for enlistment on medical grounds four times before acceptance in the non-fighting 2nd Remount Unit, in Sydney, on 8 October 1915.

The Remount Unit was created to take charge of the horses (left behind in Egypt) of the Light Horse Regiments acting as infantry in Gallipoli. Men were recruited for their horsemanship and Frank's experience as a station hand and drover in Queensland and the Northern Territory, fit the bill.

# Live Local Real Estate

## Choosing the right agent for your home sale: public insights from Nambour survey

Real Estate Column with RE/MAX Principal Tristan Brown

WHEN it comes to selling your home, the selection of an agent plays a crucial role. We took to the streets of Nambour and Nambour Plaza to understand what factors truly matter to the public when choosing their representative for the home sale.

**Here's what we found:**

- 1. Relationship:** Around 3% of respondents preferred agents they had a personal connection with, such as friends, family, or business contacts.

- 2. Agent of Purchase:** 10% opted for the agent who originally sold them the property, emphasizing the significance of trust.

- 3. No. 1 Selling Agent:** A substantial 30% believed in choosing the #1 selling agent in their area, valuing local knowledge and expertise.

- 4. Effective Marketing:** About 27% placed emphasis on marketing, seeking an agent with a strong 'top of mind' presence to attract

potential buyers.

- 5. Referrals:** Around 12% were guided by recommendations from their network, highlighting the power of referrals from trusted sources.

- 6. Commission Considerations:** About 7% leaned towards agents offering the lowest commission as a deciding factor.

- 7. Cost-Effective Marketing:** Only 2% were swayed by free or low-cost marketing options, indicating a preference for value-added services.

- 8. Brand Relationship:** About 4% considered their relationship with the real estate brand as influential in their decision-making.

- 9. Community Presence:** Around 5% valued an agent's community presence and involvement as a compelling factor.

It is important to note that many people said their decision would be made by weighing up a combination of factors, with a main factor being the anchor of their decision.

These insights highlight the diverse range of priorities when selecting a home-selling agent. Understanding what matters most to you ensures a smoother, more satisfying experience in the selling process.



# An Agent that Cares!

Honest and trusted throughout the Sunshine Coast Hinterland.

## Steven Clay



Steven Clay 0438 510 583

# Professional, Positive & Truthful!

Garren sold our property for us recently and did a great job in obtaining a price we were very happy with, we had tried a couple of Agents before him without success but when Garren signed us up as one of his listings, things started happening straight away. He's a very positive person and very upbeat about everything, even when things look negative sometimes, Garren was just the Real Estate Agent we needed to sell our home and we can't recommend him enough.

- Steve & Lindy (Sellers)

## Sell with Garren Reisinger



Garren Reisinger 0476 950 007

This is an easy property to maintain, and also to lock and leave when you are away travelling.



## Light-filled, modern & stylish

Agent's Choice: 5/10 Imagination Drive, Nambour.

LOCATED in the modern 'Villas on Image' complex, and with only one directly adjoining neighbour, privacy is assured in this light-filled townhouse.

Across two levels it features front porch and entry foyer, three bedrooms, two bathrooms, built-in study nook, generous sized quality kitchen, open plan living and dining flowing out to north-east facing patio, and extra-deep single lock-up garage with laundry facilities. It is worth noting that there is adjacent onsite parking for a second vehicle, and the complex also offers visitor parking.

Split system air-conditioning in the master bedroom and living, ceiling fans throughout, easy-care tiled flooring in living, carpets in bedrooms, separate shower and bath in family bathroom, storage under stairs, instantaneous

hot water, and security screens are existing features that boost comfort, liveability, and value.

The complex of 29 villas is a mixture of owner-occupiers and tenants; body corporate fees are low and the complex is pet-friendly (stbca). This particular townhouse is rented until August 2023 at \$550 per week, so could be ideal for an investor commencing or expanding their portfolio.

Equally, it could be perfect for a downsizer or an entry-level couple/small family to purchase and call 'home'.

Located just a short walk to a childcare centre and Glenbrook Downs playground and parkland, this is a family-friendly pocket of Nambour suitable for all ages and stages of life.

► **To arrange an inspection contact Remax Nambour's Garren Reisinger on 0476 950 007 or Tristan Brown on 0403 665 643.**

## Classified Ads

Phone 0400 069 711

### Yoga

#### HATHA YOGA/PILATES RELAXATION

Hatha Yoga Pilates is held at the Woombye Hall: Sat 9am & Wed 9.30am. Beginners & Seniors welcome. Cost \$10. Call Christine: 5441 6285 (Cert. in Pilates matwork; Dip. IYTA: Yoga Instructor; USC Sport & Exercise minor; Ex. Prescrip. for Health & Rehab.)



The Nambour Museum Float entry in the 1993 Sugar Festival Parade with Gayle Plater sitting on the hay bale.

## A brief history of Nambour museum

"SUPPORT Call for Nambour Museum" was the headline in the Nambour Chronicle resulting in a public meeting being called on the 22 August 1992. After hours spent collecting suitable objects, constant, lobbying and endless discussions, a generous donation from a local citizen, Mrs Bolton, enabled the lease of a few rooms in the present Museum building.

Appropriately, part of the building was composed of the the Nambour School headmaster's residence in use from 1908 to 1931 and then occupied through the years by the Departments of Primary Industries and Public Works (QBuild).

Nambour's first museum was officially opened with much fanfare on 20 April 1998 by the Hon. Neil Turner M.L.A. who murmured to Shire Chairman Eddie de Vere "We'd better be careful. They're looking for old things in here!"

A large rental of \$2 000 per annum was paid for partial use of the upper level of the building. This required constant fund-raising until lobbying by Peter Wellington MP resulted in the granting of a 30 year lease of the entire building and grounds to the museum for the payment of a 'peppercorn rent'.

The development and improvements to the Nambour Museum began in earnest.

### Recruitment

#### Home Care Support Worker

- Cert III of individual support required
- Fixable time

IF INTERESTED, CALL OR EMAIL  
**0402 383 527**  
 office@cfaq.com.au

### For Sale

Chair specifically designed for maximum support and comfort.

- Adjustable
- Electric
- Hardly used
- \$2,460

Call 5478 8923



# Thinking of Selling?



Contact our Woombye sales specialist!

## Jason Sims



Jason Sims 0404 676 701



“Reilly Cottage” is the perfect blend of stunning Queenslanders, built on flat land and with your very own private rainforest oasis, with trickling stream.

## Reilly Cottage a Queenslander with a rich 96-year history

**Agent's Choice:** 31 Reilly Road, Nambour. \$749,000.

96 years ago a group of young men measured, cut and sawed their way through local hardwood timbers, painstakingly piecing them together, piece by piece to produce this gorgeous home on 2,236m<sup>2</sup>.

Now part of Nambour's rich history, “Reilly Cottage” is the perfect blend of stunning Queenslanders, built on flat land and with your very own private rainforest oasis, with trickling stream.

This beautiful home is filled with character, warmth and history. Afternoon rays of sun stream through the stained glass windows, leaving a multi coloured display stretching the length of the hardwood floors, all the way up the 9ft VJ walls.

The kitchen has been modernised to fill your

needs and looks out across the huge 7m x 3m timber deck, taking in the lush green backyard.

There are 3 bedrooms, separate lounge and dining, a central bathroom, plus an additional and newly added second toilet.

A single carport to the front yard, combines perfectly with the double garage, that includes power and lighting (perfect for the handyman, tradesperson or even home office), whilst there is full access underneath the house for storage. All of this, is a short 500m walk to Nambour's CBD.

It should also be noted that the property is zoned Mixed Housing; thereby protecting your investment. Please note: there are 2 videos for this property.

► **Contact Remax Nambour selling agent, Jason Stock on 0499 562 675 to arrange your inspection.**

# Your Local Real Estate Agent...

...With a *Difference!*

## Megan Manly



0421 040 807



\$675,000



21 Ensbey Road, Flaxton

4 1 2

Entry-Level Flaxton Delight!

With prices across the Sunshine Coast and Hinterland soaring in recent years, finding a bargain in a tightly held suburb like this is rare!

Walking past the large, covered carport, the front door immediately opens up to a large stone-tiled open-plan living space. The lounge room has been updated with a gorgeous floating floor, while the extensive kitchen features an open-wall design that looks out onto the dining room and lounge.



Scott Walters  
0447 474 982

scott.walters@remax.com.au



OFFERS OVER \$649k CONSIDERED

2/17 Ballinger Court BUDERIM

2 2 1

Richard Krausz 0422 997 810  
Stephanie Black 0401 977 230



OFFERS OVER \$719,000

7-9 Tamper Street NAMBOUR

3 2 1 810m<sup>2</sup>

Scott Walters 0447 474 982  
Jai Barber 0492 855 196



\$749,000

31 Reilly Road NAMBOUR

3 1 3 2236m<sup>2</sup>

Jason Stock 0499 562 675



OFFERS OVER \$749k CONSIDERED

7 Stanley Street NAMBOUR

5 3 1 875m<sup>2</sup>

Megan Manly 0421 040 807  
Jai Barber 0492 855 196



EXPRESSIONS OF INTEREST

28 Kondalilla Falls Rd MONTVILLE

2 2 4 2.46 Hectares

Nathan Beasley 0427 612 550



PRICE GUIDE: \$1,250,000+

101 Andersons Road YANDINA

5 2 2 2.54 Hectares

Scott Walters 0447 474 982  
Garren Reisinger 0476 950 007



OFFERS OVER \$799,000

6 Willowood Crescent NAMBOUR

4 2 2 600m<sup>2</sup>

Scott Walters 0447 474 982  
Steven Clay 0438 510 583



EXPRESSIONS OF INTEREST

207 Narrows Road MONTVILLE

21 18 30 15 Hectares

Nathan Beasley 0427 612 550



OFFERS OVER \$899,000

3 Argyle Crescent COES CREEK

7 3 2 680m<sup>2</sup>

Tristan Brown 0403 665 643  
Jai Barber 0492 855 196



OFFERS OVER \$899,000

84 Atkinson Road BLI BLI

4 2 2 1280m<sup>2</sup>

Steven Clay 0438 510 583  
Scott Walters 0447 474 982



OFFERS OVER \$450,000

9/76 Blackall Terrace NAMBOUR

3 1 1

Steven Clay 0438 510 583



PRICE BY NEGOTIATION

15 Reilly Road NAMBOUR

3 2 2 518m<sup>2</sup>

Garren Reisinger 0476 950 007



OFFERS IN THE LOW \$1 MILLIONS

167 Flaxton Drive MAPLETON

1.82 Hectares

Scott Walters 0447 474 982



EXPRESSIONS OF INTEREST

19 Kingsview Drive FLAXTON

3 2 3 804m<sup>2</sup>

Scott Walters 0447 474 982



\$625 PER WEEK

2/35 Jeanette Avenue NAMBOUR

3 2 2

Jody Chatillon 07 5470 7000



\$650 PER WEEK

1/209 Windsor Road NAMBOUR

3 2 2

Jody Chatillon 07 5470 7000



An excellent three-bedroom, single level home, it offers the perfect opportunity to enter the Maleny market.

## Contemporary, elevated living right in the heart of Maleny

**Agent's Choice:** 6 Woodpecker Close, Maleny. Contact agent for price.

SET in a perfectly elevated position, on a low maintenance 901m<sup>2</sup> block, 6 Woodpecker Close is located in a private cul-de-sac in the heart of Maleny. It is close to schools, cafes, shopping, parks and public transport.

An excellent three-bedroom, single level home, it offers the perfect opportunity to enter the Maleny market and with a neutral palette, it is a fabulous blank canvas for you to add your own touch.

The central, well-appointed open plan kitchen, dining and living area is the heart of the home, providing a wonderful space for everyone. Fit with modern appliances and features there are ample windows creating beautiful light-filled spaces throughout.



Perfect for down-sizers

## New estate releases homes and opens social club

Business Writeup:  
**Greenwood Forest Glen**

A luxury over-50s living community has just released 35 new homes, adding to the significant growth of the area and providing much needed accommodation for people looking to downsize.

Greenwood Forest Glen has seen a huge increase in demand for their homes. Sales Manager Rob Midgley said they already have people eagerly awaiting the release of the 'heights precinct'.

"We have 83 homes currently lived-in and 23 under construction," he said. "The release of the next batch of residences will bring the estate closer to its expected capacity of 180 houses."

Mr Midgley said it was important to be able to offer a downsizing opportunity to over 55s who are looking to move to a more luxurious and affordable lifestyle.

"95 percent of our current residents have relocated here from other areas of the Sunshine Coast so this shows how much these kinds of properties are needed," he said.

Mr Midgley said the release couldn't come at a better time as the region experiences challenges across the housing market.

"We're very proud to offer a product that can help locals stay in



The new homes at Greenwood Forest Glen will bring the estate closer to its expected capacity of 180 houses.



Club Eden boasts a bowling green, 25m pool, gym, tennis court, library, art studio, workshop and games room, along with a community garden.



the region and not be forced to look away from the Coast."

The release comes ahead of the opening of Club Eden where residents can enjoy an event space, function room and ample spaces for meetings, activities, parties and events.

Club Eden boasts a 25m pool, gym, tennis court, library, art studio, workshop, games room and bowling green, along with a community garden.

Greenwood is within the growing Forest Glen township which is becoming an incredibly vibrant com-

munity which includes a new village centre, supermarket, health centre, and revamped chemist, as well as access to nature through its network of pedestrian walkways.

"Residents of Greenwood enjoy a more affordable cost of living and a great quality of life with easy access to amenities, local shops and public transport, as well as beautifully private natural surroundings including our five hectares of private conservation reserve with walking trails," Mr Midgley said.

► For information go to: [www.greenwoodforestglen.com.au](http://www.greenwoodforestglen.com.au)

# MALENY & HINTERLAND REAL ESTATE

SALES | PROPERTY MANAGEMENT | COMMERCIAL



WELCOME TO THE MARKET

6 Woodpecker Close **MALENY**



An excellent three-bedroom, single level home, it offers the perfect opportunity to enter the Maleny market and the perfect blank canvas with ample opportunities.

- Single level, elevated 901m<sup>2</sup> block in a quiet cul-de-sac
- Family bathroom with soaking tub and separate toilet
- Open plan kitchen, living and dining area
- Double lock-up garage with internal access
- Low maintenance yard with a lovely outlook over town

Act on this fantastic opportunity for first home buyers, families, low maintenance downsizers or investors to take advantage of this perfectly positioned home. Astute buyers will know they need to act quickly.

**FOR SALE**  
Contact Agent

**INSPECT**  
By Appointment and Open Homes

**Rodney Millett**  
0477 702 073  
[rodney@malenyrealestate.com](mailto:rodney@malenyrealestate.com)



9 North Maleny Road **MALENY**



Displaying breathtaking Northern rural views, this property is perfectly positioned in a peaceful area within walking distance to Maleny's vibrant main street.

- Double storey home on an elevated 1121m<sup>2</sup> block
- Stylish timber kitchen with great connection to the verandah
- Spacious living room integrates with the deck area
- Split system air conditioning and high ceilings throughout
- Covered verandahs front and rear with stunning views

Just a 10-minute stroll or 2-minute drive to the cafes, restaurants and facilities of the Maleny township; a property of this calibre, in this location, will not last long!

**FOR SALE**  
Price Guide \$1.25M

**INSPECT**  
By Appointment

**Jess Luthje**  
0438 616 064  
[jess@malenyrealestate.com](mailto:jess@malenyrealestate.com)



14 Balmoral Road **MONTVILLE**



Offering the absolute best of European inspired design, in a very private rural setting, Balmoral offers an enviable retreat from everyday life.

- Master built, elegant homestead
- Hamptons style open plan kitchen
- 3 metre wide expansive, covered verandahs
- Separate, 2-bedroom cottage
- Views to Buderim and the Sunshine Coast
- Oversized garage and plenty of onsite parking

Gorgeous high ceilings, light-filled rooms via large windows and French doors, Spanish tiles and polished concrete floors all create a modern space.

**FOR SALE**  
Offers Over \$3,250,000

**INSPECT**  
By Appointment

**Rodney Millett**  
0477 702 073  
[rodney@malenyrealestate.com](mailto:rodney@malenyrealestate.com)



41 Obi Vale **NORTH MALENY**



Tucked away down a treelined driveway, on 5638m<sup>2</sup> in prestigious North Maleny, this cleverly designed home has so much to offer.

- Contemporary, original design with spacious rooms and high ceilings throughout
- Central Northern deck overlooking the dam
- Luxury bathroom plus separate powder room
- Bespoke, matching 8mx9m shed space perfect for conversion to second dwelling
- Impressive, low maintenance gardens and landscaping

With superior privacy, the ability to lock it up and leave and only 3 minutes' drive from Maleny township, this property will certainly fulfill many requirements on your wish list.

**FOR SALE**  
\$1.25M

**INSPECT**  
By Appointment

**Jess Luthje**  
0438 616 064  
[jess@malenyrealestate.com](mailto:jess@malenyrealestate.com)



4 Centenary Drive **MALENY**



Situated just a short walk from Maleny, on an elevated 1028m<sup>2</sup> block in a sought-after street, this double storey home features delightful views over treed streets to the Northeast.

- 1028m<sup>2</sup> block with town water
- Established low maintenance gardens
- Concrete driveway and single lock-up garage
- Fully fenced, open lawn area
- Dual occupancy adds to the appeal

This home is designed for many different lifestyles including dual occupancy for an elderly parent or creating a passive income.

**FOR SALE**  
Price By Negotiation

**INSPECT**  
By Appointment

**Jess Luthje**  
0438 616 064  
[jess@malenyrealestate.com](mailto:jess@malenyrealestate.com)



PRICE REDUCED

18 Snowwood Avenue **MALENY**



Perfectly positioned at the end of a whisper quiet street, in sought-after Cloudwalk Estate, sits this contemporary DJ Sommers-built home.

- Picturesque walk to town
- Light-filled central kitchen with gas cooktop
- Rear deck with connection to the internal space
- Double lock-up garage, fantastic storage and onsite parking for visitors
- Just minutes to town amenities and golf course

Set on a lovely 906m<sup>2</sup> block, this property offers the growing family everything they need; space, modern appliances, storage, and easy access to all the amenities.

**FOR SALE**  
Offers Over \$925,000

**INSPECT**  
By Appointment

**Rodney Millett**  
0477 702 073  
[rodney@malenyrealestate.com](mailto:rodney@malenyrealestate.com)



## SECURE YOUR SLICE OF HINTERLAND PARADISE AND MOVE IN SOONER!

### Exclusive Large and Premium Homesites Now Selling.

- Two new large lot land releases scheduled to title late November, allows you to lock in the build price, secure finance and move in sooner!
- Spacious 710m<sup>2</sup> lot sizes up to a remarkable 1,719m<sup>2</sup> starting from \$545,000 up to \$680,000\*
- Perfectly positioned large, elevated, level lots within a secluded hillside location
- Surrounded by nature in the picturesque hills of the Mooloolah Valley
- Minutes to the quaint Mooloolah Village centre, state school and Dulchura National Park
- A short drive to Caloundra and Sunshine Coast CBD

Embrace the Sunshine Coast Hinterland lifestyle. Your perfect location awaits!

SALES OFFICE OPEN

visit [hillsidemooloolahvalley.com.au](http://hillsidemooloolahvalley.com.au) or call 1300 556 950

\*Information is correct at distribution and subject to change without notice. No warranty is given in respect of the accuracy of the information in this advertisement and any intending purchasers should make their own enquiries in relation thereto. Illustrations and all other photographic depictions are for presentation purposes only. Av. Land Price \$591,944. Av. Land Size 863m<sup>2</sup>.

urbex designed for life



5494 3022

[malenyrealestate.com](http://malenyrealestate.com)

Maleny & Hinterland Real Estate

[malenyandhinterlandrealestate](https://www.instagram.com/malenyandhinterlandrealestate)

PROUDLY A FAMILY OWNED AND OPERATED AGENCY IN THE HEART OF MALENY



This gorgeous property offers an exceptional design that effortlessly flows throughout the home creating seamless living for the whole family.

## Contemporary family residence in Maleny

**Agent's Choice:** 42 Bunya Street, Maleny.  
Price by negotiation.

STEP into a world of comfort with this contemporary family home in a highly sought-after location. This gorgeous property offers an exceptional design that effortlessly flows throughout the home creating seamless living for the whole family.

Spacious and light-filled living areas provide the ideal space for relaxation and entertainment. There is effortless integration to the outdoor entertaining area; buyers will delight in the lovely rolling hill views over the neighbouring farmland. The kitchen is every cook's dream; modern appliances, ample storage and enviable bench space catering to all of your culinary needs.

42 Bunya Street, Maleny is conveniently located within minutes to the centre of town,

where you'll enjoy the convenience of the local schools and an array of popular cafes, boutique stores, local shops and public transport. Maleny is a sought-after community to live in and is known for its friendly atmosphere and strong sense of belonging making it the perfect place to call your forever home.

The home is situated on a 893m<sup>2</sup> low maintenance block with a rainwater tank for the gardens, a garden shed and greenhouse and a gorgeous rural outlook over neighbouring farmland.

Offering an exceptional opportunity, only an inspection will unveil all that is on offer at this delightful family residence.

It is currently tenanted at \$580 per week until June 2024.

► **Contact Maleny & Hinterland Real Estate selling agent Georgia Evans on 0459 299 835 to arrange your inspection.**



A picturesque backdrop of Lake Baroon on the jetty at Secrets on the Lake.

## Who will buy 'Secrets on the Lake?'

**Agent's Choice:** Secrets on the Lake, Nathan Beasley  
0427 612 550

A luxury treehouse resort in the Sunshine Coast hinterland is on the market and presents an unparalleled opportunity.

Set in a pristine rainforest, overlooking a magnificent lake, *Secrets on the Lake* in Montville is a land holding that is truly one of a kind, says marketing agent Nathan Beasley from RE/MAX Property Sales.

"Here we see approximately 15 hectares of lakefront land, breathtaking views, an established award-winning business with huge potential and with approvals to further develop the site," Mr Beasley.

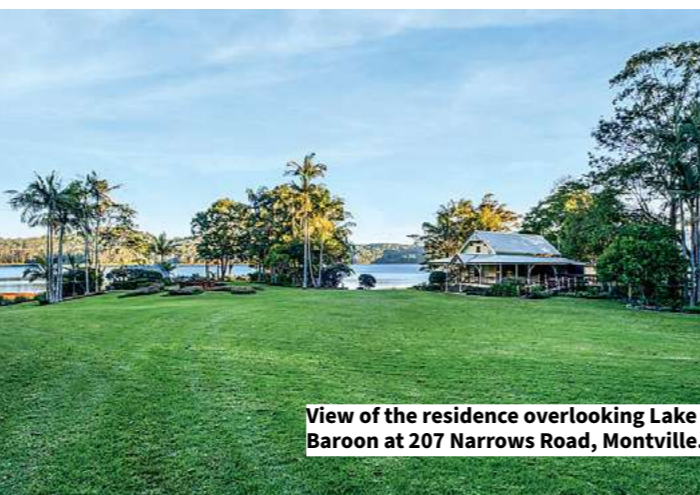
"There is clearly \$20 million-plus of existing infrastructure, which includes 10 hand-carved treehouse cabins, an owner's villa, an award-winning 100-seat restaurant, a wedding chapel, a reception lounge and an old, recycled railway station."

Mr Beasley has a long-time personal connection with owners, George and Aldy Johnston, who have spent three decades bringing *Secrets on the Lake* to where it is today, an internationally recognised destination.

"What they have created is amazing and most people will have seen nothing like it in terms of natural beauty and incredible workmanship."

"It is an intensely beautiful place and I admit that it's difficult to put a price on, but the replacement value would certainly be more than \$20 million."

George and Aldy Johnston opened *Secrets* up to visitors in 1997. After bringing their dream to reality and sharing it with thousands of



View of the residence overlooking Lake Baroon at 207 Narrows Road, Montville.

guests, they are now planning retirement.

"I call it a reluctant retirement because it is hard for them to leave. However, they have decided to move on and let new owners put their stamp on the property."

Mr Beasley is offering the property in conjunction with John Petralia from Ray White Commercial Noosa & Sunshine Coast.

It is certainly no secret how special this property is, and it is not surprising that the agents are fielding interest as far afield as the US, France and Asia, as well as Sydney, Melbourne, Brisbane and locally.

"It is more than a heavenly place to live, it could also be an excellent investment with its huge growth potential and development approval for more accommodation."

"It is absolutely magnificent and potential buyers say it is hard to think of anything that would compare with it," Mr Beasley said.

Potential buyers are being invited to make Expressions of Interest for the property, *Secrets on the Lake*.

► **Contact Nathan Beasley on mobile 0427 612 550 or email nathan.beasley@remax.com.au. View the link: www.realestate.com.au/property-house-qld-montville-142468836.**



One of the beautifully-styled bedrooms at Secrets' luxury accommodation cabins.

## Fight food waste with Oz harvest

**David Law**  
Division 10 Councillor  
david.law@sunshinecoast.qld.gov.au

Looking to save on your grocery shopping, food waste and composting? Join Michele Lipner for a Free Fighting Food Waste session at Council libraries. Michele is the 2023 Citizen of the year and founder of OzHarvest Sunshine Coast.

Discover meal planning tips, fridge storage ideas and creative recipes for leftovers. Understand the impact of food waste on the environment and change the amount of perishables going to landfill. Learn about food insecurity and how to help feed people in need. Walk away with the knowledge and power to fix your family's consumption cycle.

The sessions are supported by Sunshine Coast Council's Living Smart Program. Join the Nambour session on Thursday, August 31 from 10 - 11.30am at Nambour Library. Please register via the Sunshine Coast Libraries website.

## Invasive Plants and Animals Workshop

Council will be hosting a free Invasive Plants and Animals Workshop event at Obi Obi Hall on September 2 to arm residents with the knowledge to fight invasives on their property.

The free weekend workshop will feature a series of expert talks on our region's biodiversity, including the "bum-breathing" Mary River Turtle, and share strategies to control invasive Sporobolus grasses. Participants can meet Rocky the wildlife-saving conservation dog and collect a free native plant. Registrations are essential. Google 'Eventbrite invasive plants and animals workshop' to secure your place today!

## Bushfire season is here

It's August - which means Sunshine Coast's bushfire season is here. Residents need to be ready by understanding fire weather and how to prepare and protect family and property.

The Sunshine Coast Council Disaster Management Team want you to know that bushfires don't just occur in the bush. They can impact anyone, anywhere on the Sunshine Coast. Visit Council's website to find more information and tips to help you prepare.

## Estimates reveals 'dirty little secrets'

**Andrew Powell**  
State Member for Glass House  
glass.house@parliament.qld.gov.au

There's been plenty of dirty little secrets pried out of Labor Ministers at Estimates over the last two weeks. Things they have tried to hide from the media and the general public, but which we in the Opposition refuse to let them get away with.

For example, we've discovered that a traffic light system that gives ambulances priority was down for five months without the State Government noticing. We've also discovered that Mark Bailey's office heaved the Department of Transport and Main Roads to "delete" a \$2.4 billion train manufacturing blowout figure to cover it up. This is a tired and chaotic third term Labor Government who have given up on integrity.

## SEQ Regional Plan Update, finally

The Palaszczuk Labor Government have finally released their long-awaited revision of the SEQ Regional Plan. They have stated that the changes provide a plan for almost 900,000 new homes by 2046 to accommodate 2.2 million new residents.

For the first time, councils in the region's 12 local government areas will be required to adjust their planning schemes to help deliver a mix of homes to offer more choice to those looking for housing.

Frustratingly, the revised plan does not include or address many of the issues you have raised with me across the Glass House electorate. Because of this, I really encourage you to "have your say" before the 20 September 2023 deadline. This link <https://shapingseq.statedevelopment.qld.gov.au/> gives you five options for doing so:

- Book an online talk-to-a-planner session;
- Attend an in person community session in your local council area;
- Leave a comment on the comment board;
- Have your say by answering the quick poll questions; or
- Provide a feedback submission.

As always, I stand ready to assist where I can, but I really need the Government to hear from you directly.

## Have your say on Maleny main street

**Winston Johnston**  
Division 5 Councillor  
division5@sunshinecoast.qld.gov.au

Time is running out to share your feedback on Maleny's Maple Street which will soon tell even more of its heritage and country charm through the design of streetscape improvements. The concept design ensures the main street is a greener, safer place that brings our community together. I encourage everyone to take a look at the design and share your feedback by visiting council's Have Your Say page before August 20!

## New sign at McCarthys Lookout

I am happy to advise the new tourist sign located at McCarthys Lookout, Maleny has been completed. This is the latest improvement for this lookout area which I hope visitors and locals will enjoy the refreshed new sign sharing our local history of the area.

## Eudlo & Ilkley road upgrades

It is great to see works starting soon on the unsealed section of Perrins Road approximately a kilometre from the intersection of Logwoods Road. Works will include widening, sealing and the construction of retaining structures to improve safety. The landslip repairs will also be carried out in the next few months, weather and site conditions permitting. Works will start from the end of the month and be completed late November.

## Work starts on Sara Place, Ilkley

Reconstruction works on Sara Place, Ilkley will also start at the end of the month. The improvements will involve some widening and reconstruction of the existing pavement followed by the complete removal and replacement of the road with a new asphalt surface. The works will ensure a safer commute for our residents and improve connectivity for our communities.

These works are expected to be completed in September.

Thank you in advance for your patience and courtesy towards the construction crew, as there will be some minor delays and partial road closures.

## Listening to locals in the hinterland

**Ted O'Brien**  
Federal Member for Fairfax  
ted.obrien.mp@aph.gov.au

This week I have been out and about in Yandina, Eumundi and other areas across the Fairfax electorate listening to locals as part of my Winter Road Trip.

Cost of living concerns and the housing affordability are top of the list for most families I've been speaking with. Rising mortgage payments, rising prices at the checkout and rising energy bills are hitting hard.

Taming inflation must be the Labor Government's priority, but that unfortunately is not the case and we are not seeing workable solutions on the housing crisis.

The Coalition did not support Labor's Housing Australia Future Fund Bill because it required \$10 billion of borrowed money to capitalise a fund with uncertain returns and it cannot guarantee a single home will be built before the next election, if at all.

Returning this Bill to Parliament is a political stunt which is typical of a Government out of touch with Australians facing real hardships and painful cost of living pressures.

## Support for local volunteers

Could your local group use a grant of up to \$5,000 to support their volunteers?

I'm calling for Expressions of Interest from not-for-profit groups in Fairfax for grants to help with small equipment purchases, fuel vouchers and training for volunteers.

Submit an EOI before 31 August, by heading to my website, [www.tedobrien.com.au](http://www.tedobrien.com.au) or contacting my office for more information.

Grants for Local Sporting Champions  
I love being able to support young sporting champions participating in state, national or international championships.

Congratulations to Conner Hale of St John's College Nambour who was recently awarded a Local Sporting Champion (LSC) grant of \$750 to help with the cost of participating in "The Aussies" 2023 Australian Surf Life Saving Championships in Perth.

Applications are now open for LSC and Local Para Champions grants for 12 to 18-year-olds. For more information go to [www.tedobrien.com.au](http://www.tedobrien.com.au).

## More social housing for Sunshine Coast

**Rob Skelton**  
State Member for Nicklin  
nicklin@parliament.qld.gov.au

It was a pleasure to join Housing Minister Meaghan Scanlon and Jason Hunt MP in Yandina to announce the Qld government is partnering with Coast2Bay Housing Group to purchase 121 homes across the Sunshine Coast, Wide Bay and Gympie!

We also had a look around the new 26 unit housing complex in Yandina which is due for completion soon.

All of these efforts are part of the largest investment in housing in Queensland's history, delivered by the Palaszczuk Government

Later that day, I went with the Community Support and Services committee inspecting social housing for our inquiry into the matter.

It was great to meet with tenants to see first-hand the difference the Palaszczuk government's \$5 Billion investment in Housing is making in the lives of ordinary Queenslanders.

## Range Community Kindy Raffle

I was delighted to be at the drawing of the Range Community Kindy's huge raffle!

The team at Range Community Kindergarten are hard-working and dedicated to the wellbeing of the children in their care, so it was very encouraging to see so much community support behind this raffle.

Congratulations to the winners of the raffle, and a huge thank you to the team for organising the raffle, and to the many businesses and community groups who made generous prize donations.

## New Tasers for Queensland Police

Service just announced the Queensland Police have purchased new tasers as part of a trial. These new tasers will offer an extended range of almost 14 meters and multi-shot capability.

This is part of our government's commitment to the safety of not only our communities, but the brave men and women in the QPS serving these communities.

It's just another way we're keeping Queenslanders safe.

## Miracle hatchings: Eggs rescued as nest awareness grows in community

**Nature Watch News** from Donna Brennan Wildlife Volunteers, WILVOS, 5441 6200 [www.wilvos.org.au](http://www.wilvos.org.au)

PEOPLE are getting busy at the moment with removal of trees and burning of piles of branches. Unfortunately, little thought is given to the contents of the often well-hidden hollows, or nooks and crannies in the tree.

Sadly, future generations of birds are just wiped out as the eggs don't even get a chance to hatch. The trees come down, and the eggs, chicks, and other wildlife living there are either killed or injured. Some, not enough, have a lucky escape.

As well as the usual calls for orphaned and injured marsupials, the birds have begun nesting. One of our carers, who works in the wildlife field as well as being a WILVO volunteer, recently brought me some bird eggs.

First trip there were six hopefully-fertile wood duck eggs. I find these birds intriguing, in that such little chicks have to 'float' down from the heights of a tree. Yet they land unharmed - ready to take on the world.

Shanna also brought lorikeet eggs, two of which showed as close to hatching, and others also showing promise to my inexperienced 'candling' eye. I was over the moon when two hatched out, and more have begun hatching since I passed the eggs onto another dedicated WILVO carer. Denise and her husband are addicted to watching the hatching process too! Their grandson thought they were little dinosaurs!

Such tiny creatures to feed, but very energetic and enthusiastic about their special food. Once hatched, the chicks have to absorb the goodness of the egg yolk before our feeding process begins some hours later.

People make these miracles happen by phoning our Hotline. I love to see the genuine love and ever-growing awareness of our native animals by Sunshine Coast residents.

# More details emerge on new train line

by **Jeffrey Addison**, Sunshine Coast Commuter Advocate



Last Tuesday, *Sunshine Coast News* published some new details about the proposed 37km Direct Sunshine Coast Line (formerly known as CAMCOS).

I couldn't help but notice that it arrived on the same day that the Transport Minister was due to front the Queensland Parliament Estimates Committee... but I digress.

It gave some insights into what the new rail line and rollingstock (trains) would mean for passengers.

First up, we learnt it will be duplicated track - so a big tick for that from me.

Next we learn that the line 'could accommodate' trains that reach speeds of 160km/h 'in some sections'.

We know from previous studies (2016) that a 160km/hr design standard is the desirable maximum design speed for rail.

The geographic proximity of the touted seven stations under consideration (Beerwah, Nirrimba, Caloundra, Aroona, Birtinya, Mountain Creek and Maroochyodre) will limit the trains' ability to reach that top speed, hence 'some sections'.

I'm hoping 'could accommodate becomes 'would accommodate'.

The current maximum design speed for the not yet started after five years - 13km Beerburum to Beerwah (B2N) track is 160km/h, but not for the full length, with existing curves and track alignment putting paid to that better outcome.

There are no other passenger trains in Queensland that can achieve 160km/h, except for one type (two trains), the Brisbane to Rockhampton Electric Tilt Trains. Today, they take 7 hours and 45 minutes to make the 639km journey, an average of 82km/h. The Tilt Train holds the record for the fastest train in Australia; reaching 210km/h in a test run on 23 May 1999.

Our newest trains, called the Next Generation Rollingstock (NGR) have a design top speed of 140km/h, so they may or may not be seen on our new rail line (if it ever gets built).

Their hard, thinly padded seats make a long journey seem longer.

The NGR's passenger capacity is 964 per 6-car train, divided up into 454 seated and 510 standing, and that brings the segue to my next point.

The story says each train will carry about 720\* passengers, so 244 people less than the current NGR trains.

Perhaps this is a clue as to what the 65 new trains under the \$4.6 billion Queensland Train Manufacturing program (QTMP) rollingstock might look like.

It could mean, and I speculate:  
• that there will be more seating (less standing) in the new rollingstock, making them better for longer journey times or  
• there may be extra room for bicycles and surfboards for those heading to our beautiful beaches.

We may find out when the state drip feeds us the next pertinent piece of timed distraction from the Business Case (BC).

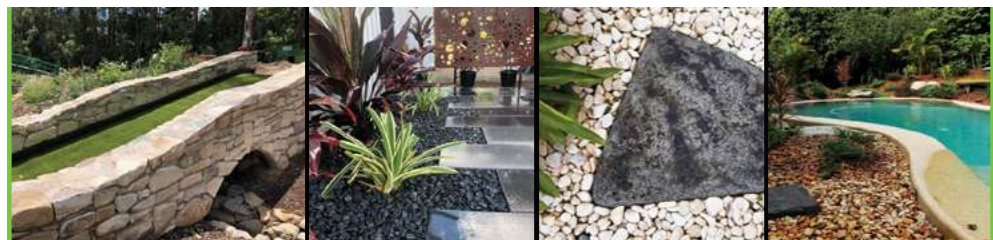
Thankfully, that BC has been bolstered with \$14 million in additional state funding in an effort to have it ready by the end of this year, so it can be assessed by both state and federal governments. A decision for funding can then be made for their respective budgets in 2024-25.

Here's hoping it's full steam ahead.

\* Author's note: Rail Back on Track suspect the 720 passenger numbers figure provided in the SCN story may be wrong. I sent a tweet to the Minister and QR and TMR on 12 August at 11.58am and have received no response. I await confirmation on the 720 figure.

## Nambour & Hinterland Business Directory

In order to reach a wide local audience you need to cast a wide net. Advertise in *The Nambour & Hinterland Business Directory* and stay in touch with your customers ALL YEAR. Phone Tanya on 0400 069 711 to reserve a place.



# Let us help you create your dream garden

With the largest range of quality products at prices to suit all budgets

- Friendly service & advice
- Browse and shop online
- On time delivery guarantee

Contact our friendly team for more information or to order

**COASTAL LANDSCAPE SUPPLIES**  
GET YOUR ROCKS OFF... US  
07 5453 7100 18 Kerry St, Kunda Park  
www.coastallandscape.com.au | kylie@coastallandscape.com.au  
BARK & MULCH | SOILS | GRAVEL | PEBBLES | SAND | SANDSTONE | ROCKS | ROADBASE | TURF | TIMBER | PAVERS | PLUS MORE!

# Look Local Trades & Professional Services

## Water Services

**HW WS SEPTIC PUMP OUTS**  
Hinterland Waste Water Services  
Peter  
0428 723 082  
hwws@bigpond.com

## Professional Services

**innov8**  
ACCOUNTING & ADVISORY  
Accounting  
Business Advisory Services  
Tax Return Preparation  
Company, Trust, Partnership, Individual  
Self-managed Super Funds  
5442 1234  
info@innovateaa.com.au  
www.innovateaa.com.au

## Blinds Awnings

Servicing The Sunshine Coast For Over 30 Years  
**INDEPENDENT**  
BLINDS & AWNINGS  
0411 872 060  
Ziptrak & Zipscreen • Blinds & Awnings  
Clear PVC Blinds • Plantation Shutters  
Security Doors & Screens  
Call us today for a free measure and quote!  
www.independentblindsandawnings.com.au  
QBCC No. 1096933

## Pest Control

**ARCHERS TERMITE & PEST CONTROL**  
WHEN ONLY THE BEST WILL DO  
✓ Termite Barrier & Warranty  
✓ Termite Inspections  
✓ 30 Years' Experience  
0455 775 512  
archers4termites.com.au

**HPS**  
Hinterland Pump Services  
Glasshouse to Gympie  
Murray  
0416 256 536

## Concreting

**CONCRETING & LANDSCAPING**  
ALL AREAS  
• Footpaths • Driveways • Slabs • Stencil  
• Stamped • Concrete Saw Cutting  
• Exposed Aggregate • Plain • Bobcat  
• Excavator & Truck  
• Quality work at affordable rates  
• Free Quotes & Free Advice Anytime  
• Credit Cards  
Ph Guy 0416 202 044  
www.concretecontrol.com.au  
QBCC Lic no. 1129605

## Fencing

**ATTENTION TO DETAIL FENCING**  
REMOVAL & INSTALLATION OF TIMBER AND COLORBOND FENCES  
WHERE QUALITY AND AFFORDABILITY MEET  
CALL CRIS TODAY  
0409 001 197

## Floor Sanding

**CHOICE FLOOR SANDING**  
TIMBER FLOORS • STAIRS • DECKS  
OWNER OPERATOR FOR 25 YEARS  
CALL PAUL  
0419 716 500

## Septic Cleaning

**Sutton's CLEANING SERVICE**  
Locally Owned & Operated Since 1980  
• SEPTIC SYSTEM  
• TREATMENT PLANTS  
• GREASE TRAPS  
• HYDRO EXCAVATION  
• LIQUID WASTE  
• COMMERCIAL & DOMESTIC  
5447 6477  
www.suttonscleaning.com.au

## Hose Fitting

**SUNSHINE COAST HOSE & FITTINGS**  
MOBILE HOSE SERVICE  
SERVICES INCLUDE  
24/7 BREAKDOWN SERVICE  
PLANNED MAINTENANCE & SHUTDOWN WORK  
HYDRAULIC & INDUSTRIAL HOSE AND FITTINGS  
FLUID TRANSFER, STORAGE AND METERING  
PUMPS AND REELS  
HYDRAULICS  
PNEUMATICS  
LUBRICATION  
REFUELLING  
0408 220 503  
24/7 MOBILE SERVICE  
sunshinecoasthoseandfittings.com.au  
scif@outlook.com.au  
KUREELPA Sunshine Coast

## Plumber

**WOOMBYE PLUMBING**  
30 Years Experience  
RURAL PLUMBING SPECIALIST  
• RAINWATER TANKS & INSTALLATION  
• DRAINAGE  
• MAINTENANCE  
• EXCAVATOR HIRE  
HAYDEN KITHER  
0490 308 785  
hayden@kitherplumbing.com  
135 OLD PALMWOODS ROAD, WEST WOOMBYE

## Landscaping Services

**WOODCHIP / FOREST MULCH**  
\$25 per cubic metre + GST  
(8 cubic metres minimum delivery)  
54 459921 or 0412 586 131  
We also provide complete tree services including pruning, removals & consultancy

## Tank Cleaning

**TANK LEAKING CLEAN REPAIR RENDER**  
OVER 35 YEARS SUNSHINE COAST EXPERIENCE  
FREE QUOTES  
PENSIONERS DISCOUNT  
0475 249 367

## Auto & Mechanical

**AUTOELECTRICS QLD**  
& Mechanical  
Air Conditioning  
Mechanical Repairs  
Auto Electrics  
Log Book Servicing  
227 Nambour Connection Rd, Woombye  
autoelectricsqld.com.au  
5442 2278

## Rubbish Removal

**2-GO Clear-Space !! RUBBISH (ANYTHING) REMOVAL**  
Fridges, Beds, Mattresses, Lounges, including clutter  
FREE QUOTES  
Small Clutter or Full House Clearances  
The Clear-Choice !!  
CALL NOW 0477 772 138

## Electrician

**ACW Electrical Pty Ltd**  
Small Job Specialist  
Quality Workmanship on Domestic Installations & Repairs  
40 Years Experience  
M: 04 27 170235

## Auto Services

**CARAVANS WE BUY, SELL AND CONSIGN**  
P: 0408 758 688

**Nambour & Hinterland Business Directory**  
In order to reach a wide local audience you need to cast a wide net. Advertise in Look Local Trades & Services & reach ... 20,000 local readers a fortnight.  
Advertise in The Nambour & Hinterland Business Directory and stay in touch with your customers ALL YEAR.  
Phone Tanya on 0400 069 711 to reserve a place.

## Painter

**Shane Nolan Painting & Decorating**  
Keeping the Hinterland Beautiful  
All Aspects of Painting  
Interior Exterior - New & Old  
• Repaints • Restoration  
• Decorative Features  
• Wall Papering  
0403 245 109  
FREE QUOTES  
shanenolan66@gmail.com  
BSA 1012510

## Gutters

**PLUMBLINE**  
FASCIA & GUTTER  
GUTTER REPLACEMENTS  
GUTTER REPAIRS & MAINTENANCE  
GUTTER GUARD INSTALLATION  
REPLACE & ADD DOWNPIPES  
METAL FASCIA REPAIRS  
FULLY LICENSED AND INSURED  
0407 603 377  
www.plumblinelinegutters.com.au

**Palmwoods Hotel** EST. 1912 **EXPERIENCE THE LEGEND**

**TUESDAY NIGHTS PARMIGIANA NIGHT**  
From \$21  
choose from 10 different toppings All served with chips and salad

**WEDNESDAY BRAIN STRAIN**  
TRIVIA NIGHT - FREE ENTRY WEEKLY DASH RACQUETE

**THURSDAY NIGHTS OPEN MIC NIGHT**  
FROM 8.30 PM IN THE SPORTS BAR CONTACT CALL FOR MORE INFORMATION AND BOOKINGS 77 009 870 501

**LIVE MUSIC EVERY SATURDAY**  
FROM 8.30PM VISIT OUR FACEBOOK PAGE FOR WEEKLY GIGS

**KILLER QUEEN EXPERIENCE**  
FRIDAY SEPTEMBER 1ST  
FIRST TIME BACK AT PALMWOODS SINCE 2019  
FREE ENTRY FROM 8:30PM | 18+ EVENT  
COURTESY BUS AVAILABLE - BOOK BY CALLING 0409 900 303  
VISIT OUR WEBSITE. CALL US OR SPEAK TO OUR STAFF FOR MORE DETAILS

28-34 MAIN STREET PALMWOODS | BOOKINGS ESSENTIAL | 1300 PALMWOODS | WWW.PALMWOODSHOTEL.COM.AU

**START THE GOOD TIMES**

**WIN AN ICONIC TRIP**

**He150** 24 X 330ML BOTTLES \$51.99 EACH

**XXXX GOLD** 30 X 375ML CANS \$53.99 EACH

**Coopers MILD ALE** 24 X 375ML BOTTLES \$53.99 EACH

**PURE BLONDE** 24 X 355ML BOTTLES OR 375ML CANS \$55.99 EACH

**1 LITRE \$58.99 EACH**  
GRANT'S SCOTCH WHISKY 1 LITRE  
EQUATES TO \$41.29 PER 700ML

**1 LITRE \$62.99 EACH**  
JIM BEAM WHITE LABEL BOURBON OR CANADIAN CLUB WHISKY 1 LITRE  
EQUATES TO \$44.09 PER 700ML

**JACK DANIEL'S DOUBLE JACK & COLA 6.9% VARIETIES** 10 X 375ML CANS \$59.99 EACH

**JACOB'S CREEK RESERVE WINES** 750ML \$9.99 EACH

**GREAT NORTHERN ORIGINAL** 24 X 330ML BOTTLES OR 375ML CANS \$55.99 EACH

**BONUS YELLOW TAIL 187ML SHIRAZ** SIMPLY PURCHASE ANY TWO 750ML BOTTLES OF YELLOW TAIL WINES TERMS AND CONDITIONS APPLY WHILE STOCKS LAST

**ANY 2 FOR \$18**  
YELLOW TAIL WINES (EXCL. PROSECCO) 750ML

**SECRET STONE WINES (EXCL. PINOT NOIR), WYNNS COONAWARRA WINES (EXCL. BLACK LABEL) OR DE BORTOLI ROSÉ ROSÉ OR BLUE GRIS** 750ML \$14.99 EACH

**BONUS PEPPERJACK** PRIZE FROM WHEN YOU SPEND \$50 ON PEPPERJACK TRIM WINES \$19.99 EACH

**PEPPERJACK WINES (EXCL. GRADED & SPARKLING RED)** 750ML

**BEERWAH CELLARS - BEERWAH** SHOP 11, BEERWAH MARKET PLACE PEACHESTER RD TEL 5494 0477

**BEERWAH DRIVE THRU - BEERWAH** MAWHINNEY STREET TEL 5494 0555

**GLASS HOUSE CELLARS - GLASS HOUSE MOUNTAIN** SHOP 5, 9 BRUCE PARADE TEL 5493 0188

**FOREST GLEN CELLARS - FOREST GLEN** TENANCY 2, 5 VILLAGE CENTRE WAY, TEL 5408 2015

**MOOLOOLAH CELLARS - MOOLOOLAH** SHOP 3, 2 JONES STREET TEL 5494 7320

**PALMWOODS CELLARS - PALMWOODS** SHOP 5, 18-20 MARGARET STREET TEL 5445 9266

**PALMWOODS DRIVE THRU - PALMWOODS** 28 MAIN STREET TEL 5445 9003

Choose to Drink Wise. All specials available from Wednesday 9th August until Tuesday 22nd August 2023. Images are for illustrative purposes only. Specials available only in the state of Queensland. Prices may vary in country and far North Queensland. Different pack sizes and variants may not be available in all stores. Bottlemart supports the responsible service of alcohol.

START AT **Bottlemart**  
BOTTLEMART.COM.AU



FOR SALE	PARREARRA	FOR SALE	PIE CREEK	FOR SALE	NAMBOUR	FOR SALE	SOUTHSIDE	FOR SALE	GYMPIE
10/10 GRAND PARADE	51 LAWSON ROAD	7 HOSPITAL ROAD	41 FURNESS ROAD	RESIDENTIAL LAND FOR SALE					
4  3  2  UNIT	4  2  5  6,000m <sup>2</sup>	3  1  1  733m <sup>2</sup>	4  2  3  VILLA	LOT 30   723m <sup>2</sup>					
Warren Nonmus: 0431 210 348	Warren Nonmus: 0431 210 348	Andy Sharma: 0410 989 177	Warren Nonmus: 0431 210 348	Andy Sharma: 0410 989 177					

## Blackall Terrace Dental

N A M B O U R

### New patient welcome offer

TOTAL: \$199 or NO-GAP!

Call to book or go online  
**(07) 5441 3583**  
blackallterrace.com.au

- Comprehensive exam
- Oral cancer screening
- Intraoral photography
- All necessary x-rays
- Scaling & polishing
- Topical fluoride
- Treatment planning

Scan to book your next visit.

\*New patients only. T&Cs available online. Valid to 30.03.23.

**ROVER** **ROVER RIDE ON MOWERS** HUMM90 & ZIP PAY 60 MONTHS INTEREST FREE NO DEPOSIT ON ALL ROVER RIDE ON MOWERS

FREE LOCAL DELIVERY • COMPLEMENTARY 4 LITRES OIL (2 LITRES "RIDER MODELS") FOR 1<sup>ST</sup> SERVICES

**24" DECK**

**30" DECK**

**5+5 WARRANTY**

### RIDER

24" ROVER MICRO RIDER RRP-\$3,099 **\$2,999**

30" MINI RIDER 6 SPEED MANUAL RRP-\$3,299 **\$2,999**

30" MINI RIDER HYDRO RRP-\$3,799 **\$3,599**

WHILE STICKS LAST

## SALE

### RAIDER

38" ROVER RAIDER 6 SPEED MANUAL RRP-\$4,099 **\$2,999**

**42" DECK**

**UP TO 3 ACRES**

**5+5 WARRANTY**

### RANCHER

38" ROVER RANCHER AUTODRIVE RRP-\$4,099 **\$3,999**

42" ROVER RANCHER HAND HYDRO 547CC RRP-\$4,599 **\$4,199**

### LAWN KING

42" ROVER LAWN KING KAWASAKI ENGINE 18HP V TWIN RRP-\$5,399 **\$4,999**

42" ROVER LAWN KING KAWASAKI ENGINE 21HP AUTO DIFF LOCK V TWIN RRP-\$6,299 **\$5,899**

**42" DECK**

**46" DECK**

**5+5 WARRANTY**

### ZERO TURN

42" ROVER RZ42 ZERO TURN 679CC V TWIN RRP-\$7,099 **\$6,299**

46" ROVER RZ46 ZERO TURN 21.5V TWIN KAWASAKI RRP-\$8,399 **\$7,499**

**Cub Cadet** **CUB CADET RIDE ON MOWERS** HUMM90 & ZIP PAY 60 MONTHS INTEREST FREE NO DEPOSIT ON ALL CUB CADET RIDE ON MOWERS

**ELECTRIC CUB CADET RIDE ON MOWERS**

BOTH WITH 6 YEAR WARRANTY INC BATTERIES.

CC 30 E RRP-\$6,799 **\$6,399**

LT 42 E RRP-\$9,999 **\$9,499**

**ZERO TURN ULTIMA LAP BAR**

**3 YR WARRANTY** **ZERO TURN**

**ZT1** 42" PRESSED DECK RRP-\$7,599 **\$6,999**  
21.5HP V TWIN KAWASAKI ENGINE

42" FABRICATED DECK RRP-\$8,799 **\$7,999**  
21.5HP V TWIN KAWASAKI ENGINE

46" FABRICATED DECK RRP-\$8,799 **\$8,299**  
23HP V TWIN KAWASAKI ENGINE

**ZT2** 54" FABRICATED DECK RRP-\$10,299 **\$9,499**  
23HP V TWIN KAWASAKI ENGINE

**ZTX5** 48" FABRICATED DECK RRP-\$13,999 **\$13,499**

54" FABRICATED DECK RRP-\$14,899 **\$14,399**

60" FABRICATED DECK RRP-\$15,899 **\$14,999**

**New Model**

**ZTXS4** 54" FABRICATED DECK RRP-\$14,899 **\$13,999**  
ULTIMA STEERING WHEEL

**ZTXS5** 54" FABRICATED DECK RRP-\$15,199 **\$14,699**  
ULTIMA STEERING WHEEL

**PRO Z**

**PRO Z 1485** RRP-\$16,999 **\$15,799**

**PRO Z 1545** RRP-\$17,499 **\$16,299**

**PRO Z 5605** RRP-\$25,199 **\$22,999**  
*white stocks last*

**PRO Z 760** RRP-\$27,499 **\$25,499**  
*white stocks last*

**PRO Z 9725** RRP-\$30,799 **\$27,999**  
*white stocks last*

**972 SDL** RRP-\$36,499 **\$32,999**  
*white stocks last*

BEACON BUT NO LIGHTS. SELF LEVELLING SEAT

FREE LOCAL DELIVERY • COMPLEMENTARY 4 LITRES CUB CADET OIL FOR 1<sup>ST</sup> SERVICES

**North Coast**

**MOWER CENTRE**

Ph: 07 5441 5455 | 36 Coronation Ave, Nambour

www.northcoastmowercentre.com

Mon - Fri: 8am - 5pm

Sat: 8am - 12pm