

Thinking of Selling?

We can get you the best price for your property

Call us on 5446 7333



Reimagining safety

Chairman proposes 3-year, \$1.2m project to enhance safety in Nambour

REIMAGINE Nambour is getting on the front foot with plans to raise \$1.2 million for a leading-edge program to improve safety in the CBD and surrounds.

Spurred by harrowing stories of violent behaviour in the CBD in recent years, Reimagine Nambour Chairman Peter Boyce said the time had come for local businesses and the community to play an active role in promoting safety and reducing the fear of harm.

Mr Boyce told a special Nambour CBD Safety Meeting on Wednesday (March 23) that \$1.2m was a lot of money but "safety in the community really shouldn't have a price".

"Because I can tell you that the first Safety Meeting I went to, I heard first-hand from people in the centre of town about the level of trauma they are coping with - I was shell-shocked. And I still haven't gotten over that," said Mr Boyce.

"There's a huge task for us to raise a significant amount of money to enable the project to get off the ground.

"But we have to get Nambour back to where it ought to be, and not have so many people traumatised by what is unfortunately - if not an everyday occurrence - a very regular one, that shouldn't be tolerated."

Mr Boyce is proposing to engage a team whose project saw a remarkable 77 percent decrease in crime in a Sunshine Coast community.

Under the proposal, the Cygnet Centre for Peace Building and Transformation will lead a similar "Collective Impact Initiative" to enhance current community strengths and find solutions to some of the safety issues.

Leading that initiative will be Christine Thomas and Lisa Harrison. They attended the meeting to outline examples of similar local initiatives that have resulted in significant outcomes.

The "Our Communities, Our Families, Our Children Project" was one of the examples presented where, in a defined local community in the hinterland, police callouts reduced from 2.3 times a day to just a couple of times a week.



Enhancing safety at the grass-roots level, from left: Lisa Harrison, Sgt Gary Brayley, Peter Boyce, Sgt Sharon Tebbutt and Christine Thomas.

"I can tell you, I admire anyone who can do what they did in this community," Mr Boyce told the meeting. "That is a just an unbelievable result. And what is really important was obviously the groundwork they did but also the way their program tapped into existing services that are already on offer."

Mr Boyce said one of the keys to success in the model presented was the requirement for multi-agency, individual and community buy-in.

The project implemented strategies to encourage cooperation between government departments and other services in order to

assist vulnerable individuals, couples and families.

"To find that there's been such significant improvements to the lives of people within this community, means that we should also start attacking the problem here," he said.

Mr Boyce said police were doing all they could under difficult circumstances, so it was important for Nambour to develop community-based solutions.

He said it was a way the community could act on its own terms rather than "applying for endless grants and waiting months and months".

Local police back concept

Nambour Police Officer in Charge Senior Sergeant Gary Brayley said the work done by the "Our Communities, Our Families, Our Children Project" helped take the strain off local police resources.

He said the initiative addressed underlying issues before tensions escalated to a point where police were required.

"As Lisa said, there was a point in time where

• To Page 3

WOOMBYE VETERINARY SURGERY
VET
 5442 2000
 Dr Charlotte Ashton-Heinius B.V.Sc.
 23 Blackall Street Woombye

SUNSHINE STEERING
 Straight up front
 RTA No. AU49451
David & Tina Ledger P 5478 8020 F 5478 8850
 Power Steering • Suspension • Wheel Alignments
 Child Restraints • Roadworthy Inspections
 Tyre & Balancing • All Mechanical Service & Repairs
 Air Conditioning • All Brake Repairs
 We also sell nuts, bolts and tyres.
 4/27 Main St, Palmwoods, Qld 4555

Sunstate Gearbox & Diff Service
 Specialising in:
 • Manuals • Differentials
 • Automatics • Tailshafts
 • Transferscases • Clutches
OBLIGATION FREE APPRAISAL
 5 Charles Court, Kunda Park
Ph: (07) 5476 8911
 www.sunstategearbox.com.au

Are you frustrated with your current internet provider?
 Freedom Broadband specialise in connecting people over 50
 • No contracts • No download limits
 • No overseas call centres
 Freedom makes it easy for you to switch
 Sunshine Coast based, call Peter on 0407 288 404 to connect you, deliver your modem and help you connect your devices
 Too easy!
freedom BROADBAND
 freedombroadband.com.au

COASTAL LANDSCAPE SUPPLIES
 GET YOUR ROCKS OFF... US
BODY LOADS ROAD BASE \$450 Delivered (10m³)
 *Some conditions apply, only while stocks last
 07 5453 7100 18 Kerryl St, Kunda Park
 www.coastallandscape.com.au | kylie@coastallandscape.com.au
 BARK & MULCH | SOILS | GRAVEL | PEBBLES | SAND | SANDSTONE | ROCKS | ROADBASE | TURF | TIMBER | PAVERS | PLUS MORE!

COMPOST WORMS
 worm farms - worm casting - inground worm towers - worm fertiliser juice
Garden the Way Nature does with the BioDynamic Organic Fertilisers Nature has always Made
 Locally Produced Composts & Soils Made From Locally Sourced Recycled Green Waste
0407 468 524
 Soils & Composts
 Potting Mix
 Seedling Mix
 BioChar
 Rock Dust
 Worm Castings
 Mushroom Compost
 Worm Juice Fertiliser
 Raised Garden Beds

SUNSHINE VALLEY Gazette

Editorial

If it matters to you, it matters to us. Send your news to Cameron Outridge 0409 424 487 editor@sunshinevalleygazette.com.au

Advertising

To advertise contact Tanya Outridge 0400 069 711 tanya@sunshinevalleygazette.com.au

Designer

Katie Buckley: katiebuckley@live.com

Distribution

10,000 copies are distributed to popular pick-up points throughout the hinterland including at Palmwoods, Woombye, Nambour, Chevallum, Eudlo, Mooloolah, Hunchy, Yandina, Maleny, Montville, Flaxton, Mapleton and Forest Glen.

Gazette in Print, Email, Online & Facebook

The Gazette is Printed Fortnightly & Online Always. A pdf form of the printed paper can be found on our website. Stories are also posted on Facebook, on our blog and via email to our subscribers.

Editorial Policy

Every endeavour is made to publish submissions but we can never guarantee that any article will definitely appear. We prioritise constructive news which strengthens the community fabric. Our broad aims are to:

- Connect the Community.
- Acknowledge Achievement.
- Back Business.

We encourage respectful & constructive debate on local issues in our letters section.

Thanks to our Advertisers

The Gazette is completely funded by our advertisers who make community journalism possible. Without them, there would be no Gazette. Please support them and let them know you found them in the local paper.

The Show will go on, despite mandates

THE Sunshine Coast Agricultural Show at Nambour Showgrounds will go ahead as planned this year.

A fortnight ago, organisers faced the real possibility of cancelling or postponing the 2022 event because of the massive financial impact of State Government health mandates.

But Show Manager Penny Walsh on Sunday advised that the 2022 Show would go ahead as planned June 10-12 at Nambour Showgrounds.

"The general members met last week and condoned the decision of the management committee unanimously," said Ms Walsh.

"The impact of cancelling the show was too devastating on the Showman's guild and the local community. And more than anything, after all the recent devastation, we want to bring something for the Sunshine Coast to look

forward to.

"We sincerely hope that the Sunshine Coast will support us as we do our best to put on a Show."

As it stands people must be double-vaxed in order to attend a show on government-owned Showgrounds, even though it is largely an outdoor event.

Sunshine Coast Show President Rowan O'Hara said recently vaccine mandates placed increased pressure on security arrangements and lowered workforce, exhibitor and patronage numbers.

Mr O'Hara questioned the consistency of contradictory rules that changed depending on the type of event. He said sports events and markets were allowed to go ahead at Showgrounds without vaccination status being noted.



Mr O'Hara said stall holder numbers were down by 30 to 40 percent due to the vaccination mandates which were also having a big impact on entrant and competitor numbers.

It is welcome news for the hinterland which is also gearing up for the Maleny Show on Friday and Saturday May 27 and 28.

Residents honoured at Aus Day awards

THREE hinterland residents were among the recipients recognised for their outstanding contributions to the Sunshine Coast region at a special ceremony last month to announce this year's Sunshine Coast Australia Day Award recipients.

Buderim's Mark Ellis was named Citizen of the year for his tireless work advocating to improve the lives of those less fortunate in the community and for collective action to put a stop to homelessness.

Through his role as Community Development Coordinator at the Maroochy Neighbourhood Centre, Mark co-ordinated the One Roof Program, which provides everything from hot showers and haircuts to mental health and medical support, for people who are homeless.

In one year, the One Roof Program has provided free meals for more than 23,000 vulnerable people and services for more than 9,000 people.

"There are so many outstanding stories of community spirit, inspiration and comradeship, which gives us all hope for 2022 and beyond," Mayor Jamieson said

"As a nominee in these awards, you represent so much of what is great about the Sunshine Coast and why it is such an enjoyable and desirable place to live.

"Each one of our nominees has made a difference to our Sunshine Coast in the past 12 months, and I'm sure will continue to do so into the future."

2022 Sunshine Coast Australia Day Award Recipients.

Citizen of the Year Mark Ellis; Senior Citizen of the Year Jim Coles; Young Citizen of the Year (tie) - Jack Watson and Sophie Greenhalgh; Environment - ECOLaboration; Sport and Rec - Dr Bridie Kean; Community - Mooloolaba Surf Life Saving Club; Creative (tie) - John Waldron and Toni Eggleston.

• **Senior Citizen of the Year Jim Coles:** Jim is RangeCare's longest serving volunteer with



Senior Citizen of the Year Jim Coles.

27 years of voluntary service. Jim has served as Blackall RangeCare Group's voluntary Management Committee for 14 years.

The last three years of his time on the Management Committee, Jim served as Vice President. Jim raised funds for renovations to the RangeCare site in Flaxton and raised \$460,000 for a new building in 1994.

Jim remains an active member of the organisation and currently volunteers at least twice a week in RangeCare's Op Shop in Mapleton.

• **Young Citizen of the Year: Jack Watson, Dulong:** Jack is very involved in his school community and his co-curricular activities include being Co-founder of the school's Debate Club, a Member of Student Representative Council, a Lion's Youth of the Year Participant and a participant of the University of Melbourne's Corpo-



• **Creative: Toni Eggleston, Yandina Creek:** Toni, pictured, has worked with Arts Connect, organising Sculpture on the Edge, Sunshine Coast Open Studio's and is currently working on reopening Stevens Street Gallery in Yandina. Her dedication to enabling the artistic community is admirable. She is passionate about creating spaces to appreciate art through events and giving a voice to artists. Her business, Mother Goose Media, saw the birth of Kids on the Coast magazine, a publication that is still running today. She also runs Boxed Up, a business that only stocks products from Sunshine Coast local artisans.



IN last fortnight's story about Lillian Rice (Palmwoods craft stalwart celebrates 93rd birthday) a surname was incorrect. The person referred to as Rose "McGowan" was in fact Rose "McNamara".

Correction: Rose McNamara

The paragraph should have read: "In 1992, with Rose McNamara (now passed), Lillian co-founded the Palmwoods Creative Arts and Crafts Association. The industrious group soon outgrew their original venue in town, and relocated to Lillian's farm."

Our apologies for the error. Lillian tells us that, while she provided the space and initial financial support, Rose was the brains behind launching the Craft Association.

MORNINGSTAR DIGITAL

YOUR LOCAL WEB DEVELOPER

Mention this ad for a locals discount

1300 392 542

M11 / 65 Currie St, Nambour 4560

www.morningstardigital.com.au

Brady's Fruit

FRUIT & VEGETABLE SPECIALIST

• Wholesale & Retail •

Col & Sandy Pearce

Ph/Fax 07 5445 9260

Park at your leisure where shopping is a pleasure

Woombye-Palmwoods Rd. Palmwoods, Q. 4555

AUTOELECTRICS QLD

& Mechanical

Air Conditioning Mechanical Repairs

Auto Electrics Log Book Servicing

227 Nambour Connection Rd, Woombye

autoelectricqld.com.au 5442 2278



Peter rescues a pony (Little Thunder) from the "flood proof" paddock. Inset: The 25 volunteers from Church on the Rise, enjoy some morning tea.

Help floods in from Church volunteers following deluge

Recent Floods – our story By Chris Grieve

THE recent floods have had a devastating effect on communities, families and individuals.

My husband and I were amongst those affected and, for a while there, I felt as if we had been violated – like a home invasion.

Our beautiful, peaceful, horse property at Conondale was smashed and, as I looked at the damage after the water receded, I thought 'how on earth are we going to get this fixed?'

The Mary River is one of our boundaries and we are near the headwaters of the Mary, so we get not only the rain that falls, but all the runoff from the Stanley River Ranges that encircle the Conondale Valley.

In 22 years we have never seen so much water in our paddocks. We thought we were safe but in the end the river had the last say and just swept through to the point where we had to rescue horses from our "flood proof" paddock.

The river swept everything in its path and the devastation and damage from fallen trees and debris made our place look like a war zone. We didn't lose any livestock thank goodness, but the damage was almost unbearable to look at. And the height of the river! At least 10 metres above its normal, quiet meandering flow.

To be honest I was traumatised and walked around in a daze, overwhelmed by the enormity of the task ahead of us. My husband and I are in our 70s and while we are fit, we are not young and I could see this work stretching on for the next couple of years. Of course the fences have to go up first, but the debris was something else.

Then a miracle happened. Our local church, Church on the Rise Maleny, heard of what happened to us and offered to bring some people down to help. That was last Thursday.

We were amazed when 25 people showed up with chainsaws, whipper-snippers, rakes, shovels, clippers, gumboots, along with the women's group from the church to make the morning teas and lunch for the team.

We were so blessed and the work they did in a day, would have taken my husband and I at least six months.

I thank our wonderful church community. They have made me smile again. I wrote a poem that honours them and the massive heart they have for people in need.

Thank you Pastor Rod Jobe and the Maleny Church on the Rise community.

► See Chris's poem in the online story version at www.sunshinevalleygazette.com.au

'Policing, alone, doesn't solve these issues'

• From page 1

police were going out to that community many times a week and it was obviously just a huge burden on our resources, and all the other government departments that come with it. Fortunately, now, visits are down greatly.

"We still go there, there still have been some issues there. Like every community it has its issues. But I think now we go out there a couple of times a week, so things definitely have improved.

"And without the collaboration of other government and non-government organizations we wouldn't have seen any change out there. So

policing, alone, doesn't solve these issues, all these underlying social issues that need to be addressed."

Reimagine Nambour Inc.

Reimagine Nambour Inc. is a community association formed to bring to life the Nambour Economic Transition Strategy.

The strategy contains an action plan to transform the local economy while retaining and capitalising on Nambour's unique cultural identity. Reimagine Nambour works closely with Council and local organisations to create a thriving regional town.

ASPHALT & BASE CONSTRUCTION CALL JOSEPH 07 5478 9834 | 0402 932 159

38 YEARS EXPERIENCE FREE QUOTES

RED BROWN & BLACK ASPHALT | MACHINE & HAND LAID HOTMIX ASPHALT

| | | |
|-------------------------------|--------------------|--------------------------|
| • CAR PARKS | • TENNIS COURTS | • PRIVATE ROADS |
| • SALES YARDS & DISPLAY AREAS | • FOOTPATHS, KERBS | • SPEED HUMPS |
| • DRIVEWAYS | • GRAVEL ROAD | • MODERN, STYLISH EDGING |
| | • CRACK SEALING | • EXCAVATIONS & DRAINAGE |

www.asphaltbaseconstruction.com.au



The Denture Care Group

Sunshine Coast

Caloundra | Maleny | Woombye



MAKE THE MOST OF YOUR HEALTH FUND THIS YEAR

CONTACT US TO FIND OUT HOW

Book a Consult with us this month so we can help you get the most out of your benefits and have you leave smiling.



P 07 5442 1721

HINTERLAND VIEW DENTAL 6 Hill Street, Woombye

denturecaregroup@gmail.com



DO YOU VALUE YOUR TEETH?

Healthy Teeth, Healthy Smile

At Hinterland View Dental we will look after you.

- Locally Owned and Operated
- Experienced and Friendly Staff
- Serene Environment

NO GAP or 50% off all Check Ups and Cleans

Complementary Orthodontic and Cosmetic Consultations

www.hinterlandviewdental.com.au

6 Hill St, Woombye

(opposite the Woombye Bowls Club)

Call 5442 2378





Students, staff shave for a cure at Woombye

WOOMBYE State School staff, students and parents raised \$3756 last Wednesday (March 30) in a Shave for a Cure event for Leukaemia.

The event was organised by Dawn Hebblewhite who is a cleaner at the school and whose husband died of Leukaemia 20 years ago.

"My husband passed away at 52 from Leukaemia and the school has been great," she said.

"Every few years we do a fundraiser to help the children give to others, by including all children who wish to colour for "Shave for a Cure" with gold coin donations.

"This is a fun time for them. We have had students also with Leukaemia, and this fundraiser helped them to know that the school was behind them.

"We had a number of teachers, and school captains doing the Shave this year, and even cleaners," Dawn said.

"I had two lovely ladies shaving for the first time and we are all raising funds for Leukaemia (blood cancer)."

The hairdressers from Uptown Hair were on hand to cut the locks from the various "brave-heads" and earlier in the day children were able to colour their hair for a gold coin donation which raised nearly \$300.



Organiser Dawn Hebblewhite shaves for a cure.

Moveable mural helps bring village vibes to Stevens Street

OCCUPYING pride of place in the centre of historic Stevens Street, Yandina is a bright and colourful mural.

Titled "Village Vibes", the work was unveiled by local artist Alice Graham in the presence of Division 10 Councillor David Law.

Toni Eggleston of Stevens Street Gallery initiated the project and Alice was eager to take up the challenge.

The composition exudes life and captures the essence of Yandina and the picturesque surrounds. From her vantage at Yandina Art & Framing directly across the road, Alice has long cherished the notion of contributing to the beauty of the area in a practical manner.

On completion of the season, "Village Vibes" will be offered for sale (in addition to prints).

Village Vibes' is an abstract representation of Yandina, and it will be available for purchase when it comes off the wall to make way for the next artist.

"I would love this painting to find a new home in a day-care centre, a school or even a local eatery," Alice said.

"It is wonderful that this opportunity is being made available to local artists and we can make



Alice Graham and Cr David Law in front of Village Vibes' which will be available to buy when it comes off the wall to make way for the next artist.

this contribution to our community and visitors to our town".

▶ You can view 'Village Vibes' at 2 Stevens Street, Yandina. To see more of Alice's work follow her Instagram @studio_alice.au

PROTECT YOUR OUTDOOR AREA FOR ALL SEASONS



Keep out the weather and extend your living space.

Our blinds are retractable when not needed and are available in colours and styles to compliment your exterior scheme.

Available with spring, crank or motorised operation, they are hard wearing, and made to withstand our tough conditions.

Ours is a well established local family business with the experience to advise and install.

Our quality products are made to last.

MOBILE SERVICE
We come to you!

Local Hinterland Company

Call us for an on-site measure and quote. Our experts will give you the right advice about the best product for your project.

5494 6898

www.customcurtains.com.au

CUSTOM Curtains and Shade



Blinds • Awnings • Curtains • Shutters • Security • Umbrellas

Proudly serving the Sunshine Coast for over 16 yrs



DentalExcel

WE'RE HERE FOR YOU!



NOW OPEN FOR ALL PROCEDURES

In line with Stage 1 restrictions, we look forward to welcoming you back for ALL of your dental needs.

COVID-19 Screening measures in place to ensure safety.

Dental Excel is grateful for the dedication of our staff who have been there for your emergency treatments throughout this crisis. We are still here for you and still adhering to strict hygiene precautions to keep you and us safe.

Dental Excel is proud to be a part of the MARLEY DENTAL GROUP



DentalExcel

Bulk Billing Medicare Child

Dental Benefit Scheme for Eligible 2-17 yrs

• Family Dentistry • General Dentistry • Cosmetic Enhancements • Zoom® Teeth Whitening
• Veneers • Crown and Bridge • White Fillings • Preventative Dentistry • Children's Care
• Gum Disease Maintenance • Dentures and Veterans Affairs • Dental Implants



Payment plans available - no interest ever

Open Monday to Saturday • Early and Late Appointments

Ph: 5445 0166 2-4 Margaret Street, Palmwoods www.dentalexcel.com.au

Responding to crisis in Nambour for 100 years

Ambulance to celebrate a centenary of service

OFFICIAL Ambulance services to Nambour and the hinterland began 100 years ago this month and to celebrate this epic milestone there will be an Open Day at the Tramway Terminal in Mill Street on April 23 from 10am-2pm.

"We're Inviting the community to come along and help us celebrate and have a sausage sizzle," said Nambour Local Ambulance Committee President Gary Langford. "There will be face painting and entertainment, and memorabilia will be on display including vintage ambulances. Also, paramedics will be donating their time to promote CPR awareness. It's an opportunity to celebrate 100 years of service with past and present staff."

Another highlight of the Open Day will be the opportunity to view Nambour's first motorised ambulance vehicle almost 100 years after it began helping save people's lives in 1927.

CPR lessons

Chief Inspector Alexis Hughes, Manager Clinical Education said paramedics would be available to provide first aid instruction and answer questions.

"We'll provide a basic session in CPR that covers crucial aspects like the depth, the rate and the rhythm of CPR," she said. "People will get an opportunity to practice those skills on a mannequin. We'll have qualified staff delivering these important skills. Everyone needs to



The official opening of the QATB station in Howard Street, Nambour, on August 23, 1958

know CPR and this is a great opportunity to learn from the experts."

Officer in Charge Nambour Station Joy Reitze said CPR awareness was an essential skill for everyone to learn. "Every second counts in pre-ambulance care," she said. "The sooner you start CPR the better the outcome for the patient. If no-one has been doing CPR by the time we get here there's simply less chance of survival."

Gary said the Open Day was an opportunity to get to know your local ambos. "All that most people tend to know about the Ambulance Service is the lights and sirens. But behind the lights and sirens are a group of wonderful, dedicated professionals who are also mums and dads and members of our community."

Gary said, from a first aid perspective, it was also important for people to get to know the locations of local Auto External Defibrillators (AEDs).

"They're everywhere in the community and it's helpful if people get to know these locations so they can help provide early assistance in an emergency. In Nambour they're all over the place — at shopping centre's, gyms, doctor's surgeries, the RSL and the golf club for instance.

Gary started on the Local Ambulance Committee 23 years ago with fellow locals Greg Biggs and Geoffrey Brown when the service was situated at what is now called the Old Ambo Station in Howard Street. The trio remain on the



A century of service: Officer in Charge Nambour Station Joy Reitze, Local Ambulance Committee President Gary Langford and QAS Clinical Education Manager Alexis Hughes at the Tramway Terminal.

committee to this day. The current Nambour Ambulance station is in Rigby Street.

► Nambour Ambulance Centenary Open Day at Nambour Tram Terminal in Mill Street, near Coles, on April 23 from 10am-2pm.



Staff and vehicles front Nambour Ambulance Centre in Howard Street, Nambour, in 1927.

From rough lean-to and 'litter' to today's modern paramedics

AFTER returning from the First World War Mr D.W. Baptie, who had served as a relieving bearer at the City Ambulance and Transport Brigade (CATB) in Brisbane from 1899 to 1903 settled on land at Palmwoods.

One day in 1914 he became dangerously ill with peritonitis and was carried on a railway stretcher to the station one kilometre away by four neighbouring farmers.

One of these farmers was Frank Nicklin, later to become Sir Frank Nicklin and Premier of Queensland. Following this incident, a rough 'lean-to' was built at Palmwoods Station to house a litter (like a stretcher) and these arrangements were the forerunner to the establishment of a self-governing ambulance service in Nambour.

Ambulance services in Queensland began with the establishment of the CATB in Brisbane on 12 September 1892. The original intent has prevailed through time: to provide care and support to the sick and injured in the Queensland community.

By 1902 Queensland had transitioned from a colony to a state and the ambulance brigade had spread to a number of Queensland communities to become the Queensland Ambulance Transport Brigade (QATB). Each local centre was administered by a QATB committee in conjunction with the State Council. On 1 July 1991, the QATB was transformed into a state-administered service to become the Queensland Ambulance Service (QAS) as we know it today.




SUMMER HOURS

8AM - 4PM
MONDAY TO FRIDAY

8AM - 2PM
SATURDAY

9AM - 2PM
SUNDAY

HOW IT WORKS

- Urban Depot and the Containers For Change scheme makes getting paid for recycling easy.
- Collect your eligible containers and remove the lids.
- Enjoy the drive through recycling experience at Urban Depot!
- Let us unload, sort and count your containers while you stay in your car.
- We bring your cash refund to your vehicle or we deposit your refund into your scheme ID account.

THE ONLY FULL SERVICE CONTAINERS FOR CHANGE DRIVE THROUGH DEPOT ON THE SUNSHINE COAST!

FULL-SERVICE DRIVE THROUGH (NAMBOUR)
7/1 WINDSOR RD, BURNSIDE 4560
CALL 0492 846 936

Earthmoving • Cranes • Trucks • Hydraulics • Attachments



GR FLEET SERVICES
DIESEL MAINTENANCE & REPAIRS

We service and repair all makes of earthmoving machinery, cranes and trucks.

From Warranty Servicing to hydraulic hose repairs we have you covered.

FULLY EQUIPPED WORKSHOP + FIELD SERVICE

Authorised Dealers







169 Nicklin Road, Palmwoods • 5457 3066 • grfleet.com.au • 

Exhibition running from March 19th – April 30th



Alice Graham

ORIGINAL ARTWORKS

Bright & Beautiful

Yandina Art & Framing





Harri Jones, left, with Duncan MacKellar at MacKellar HQ in Nambour.

Nambour firm backs young-gun Porche driver's race to the top of Carrera Cup

IN just a few short years, 22-year-old Harri Jones has gone from a promising young motorsport talent to becoming now one of Australia's most exciting racing drivers.

His rise through the motorsport ranks has been nothing short of meteoric, and as he prepares to kick off the 2022 season at the Australian Grand Prix, there's no signs of slowing down.

But Harri didn't get to this point alone.

Among those that have backed Harri is Nambour's MacKellar Group who have been part of the journey from the beginning and remain major supporters to this day.

For MacKellar Group Founder and Managing Director, Duncan MacKellar, the partnership has been important not only for the organisation, but also for what it represents for the region.

"We love supporting local Sunshine Coast talent to pursue their aspirations," says MacKellar.

"Being a young athlete on the Sunshine Coast is different to coming from somewhere like a major capital city, where there are a lot of sports people and opportunities to get backing. So for us, it means a lot to see a young Sunshine Coast talent get some real support and the chance to shine on the world stage.

"It's also been fantastic working with Harri over the years and seeing him evolve. He's developed as a driver and an athlete and continues to apply his intelligence to his driving. We're very excited to see what he can achieve this year and how far he can go."

► The 2022 Porsche Paynter Dixon Carrera Cup Australia kicks off with Round 1 at the Australian F1 Grand Prix on Thursday (April 7).



An artist's impression of the farmstay project proposed by local developers.

Luxury farmstay project proposed for Woombye

A local developer has lodged plans for a \$10 million tourist park on Diddillibah Road, Woombye.

Highgate Developments Pty Ltd Directors Andrew and Joanne Pitcher have big plans for creating farm-based accommodation facilities and activities on the idyllic 26.5ha (66 acres) site.

If accepted *Sixty6 Acres* would comprise 132 sites (20 two-bedroom high-end cabins, 19 luxury glamping tents, 49 van and RV sites and 44 camping sites).

Bordering Paynter's Creek, and with a nod to Woombye's agricultural roots, 'Sixty6 Acres' will be a working animal farm and local produce supplier.

According to a statement from the company 'Sixty6 Acres' will differentiate itself by providing multiple, high-quality accommodation options (cabins, glamping, camping and caravans), farm experiences and recreation & relaxation facilities that are unparalleled on the Sunshine Coast.

'Sixty6 Acres' will provide sustainable, eco-

logical outcomes including vegetation rehabilitation, landscape buffers and habitat linkages to the local environment.

Highgate Developments Group intends to bring the park to life in stages over the next few years.

The comprehensive development application has been submitted to Sunshine Coast Regional Council and now sits with them for assessment.

Mr and Mrs Pitcher attended Woombye and Nambour State Primary schools respectively, and jointly attended Nambour State High.

The couple have three children and the family is actively involved in community sport, with Jo in her fourth year as President of the Mooloolaba Reds Netball Club and Andrew a coach of junior cricket at Nambour.

The Pitcher/Gibson family heritage goes back several generations in Woombye. Andrew's parents were pineapple farmers in Woombye and Nambour from the late 1950s through to the 1970s. Andrew's father's first pineapple farm was on Preston Road at Diddillibah.

MOTHER'S DAY

SATURDAY, 7TH MAY
HIGH TEA - 10AM-12PM

High Tea Menu

FLAXTON LUXURY TAPAS & BOLLINGER HIGH TEA
\$90pp
Minimum of 2 guests
Also available Gluten Free
Savoury | Sweets

FLAXTON HIGH TEAS
\$65
Also available Gluten Free
Seafood | Chef's Selection of Sweets

FLAXTON SMOKEY STACK
\$60pp
Also available Gluten Free
Smoky BBQ Lovers | Chef's Selection of Sweets

FLAXTON FAMOUS TAPAS HIGH TEA WITH A TWIST
\$45pp
Also available Gluten Free

FLAXTON DIETARY HIGH TEA
\$457pp
We will change the content to suit your particular dietary need
DF, vegetarian & vegan

CHILDREN'S HIGH TEA
\$22.50
Under the age of 12

BEVERAGES
Add on Bottomless Mimosa Package \$15pp
Beverage Tab or Cash Bar available

TIMINGS
Sitting at 10.00AM
2 Hour duration

SUNDAY, 8TH MAY
HIGH TEA - 10AM-12PM
SEASONAL SET MENU - 1PM - 3PM

Seasonal Set Menu

ENTRÉE

Steamed Mussel Linguine with Creamy Spinach
OR
Tamarind Pork Belly with a Fennel & Mandarin Salad *gf, df*
OR
Fetta & Truffle Arancini with Egg Plant Caviar *gf, vegan*

MAINS

Grilled Salmon Fillet with Mooloolaba Seafood Chowder *gf, df*
OR
Pappardelle of Roast Organic Vegetables with Baby Spinach & Cashew Parmesan *gf, vegan*
OR
Sticky Braised Wagyu Oxtail with Chorizo and Garlic Mash *gf*

DESSERT

Apple and Almond Crumble Tart with Cinnamon Ice Cream *gf*
OR
Lemon Myrtle Pannacotta with Rhubarb Compote *gf, df*
OR
"Flaxton Specialty Souffle" *gf, df available*
Baked fresh to order & topped with Vanilla Bean Ice Cream & Raspberry Coulis

2-Course Meal - \$44.00 | 3-Course Meal - \$59.00

Apple and Almond Crumble Tart with Cinnamon Ice Cream *gf*
OR
Lemon Myrtle Pannacotta with Rhubarb Compote *gf, df*
OR
Enjoy a complimentary glass of Flaxton Grove House Wine or Flaxton Grove Sparkling Brut when ordering a three course meal

EXTRA NIBBLES TO ORDER
Cheesy Garlic Bread 8.00

NAMBOUR
wesleyan METHODIST CHURCH

SUNDAY SERVICES 9AM
165 Perwillowen Rd, Burnside

GOOD FRIDAY SERVICE
8AM
APRIL 15TH

Sunday School During the Service in School Terms

For enquiries contact our office:
P 5476 4263
We're not just a church, we're a family

SCHOOL HOLIDAY PROGRAM

FOR STUDENTS IN PREP TO YEAR 7

WHERE: Nambour Wesleyan Methodist Church
165 Perwillowen Road, Burnside

WHEN: Monday - Thursday
April 11th - 14th, 2022
9:00am - 1:00pm

COST: \$20.00 per child for the whole week
OR \$5.00 per day

REGISTER AT: <https://form.jotform.com/213291741664861>

GAMES, FUN, LUNCH PROVIDED EACH DAY

For enquiries contact our office:
P 5476 4263
Email: revscottlucas@gmail.com

Need legal advice about retirement living?

David Wise Solicitor

Specialist advice for residents and prospective residents of retirement villages, over 50's resorts, and manufactured home parks, including entry, exit, dispute resolution, Wills, Powers of Attorney and Estates.

0412 254 080 | principal@davidwisesolicitor.com.au
www.davidwisesolicitor.com.au

MEMBER Queensland Law Society.

Bookings Essential.
For Seasonal Set Menu, bookings are preferred, but walk-in's are also welcome.

CALL NOW TO BOOK
07 5445 7450
313 Flaxton Drive, FLAXTON
www.flaxtongardens.com.au

SPAR



WOOMBYE

Market Specials



\$2.50
EA.

Prepacked Cherry Tomatoes 250gm \$10 per kg



\$1.25
EA.

Shepard Avocado



\$3
EA.

Iceberg Lettuce



\$2
EA.

Prepacked Brown Onions
1Kg \$2 per kg



\$4.50
KG.

Lemons

LOW PRICES ALL DAY EVERY DAY



PAYLESS
EVERYDAY

\$18 kg.

Kabana From the deli



PAYLESS
EVERYDAY

\$20 kg.

Deli Semi Dried Tomatoes or
Greek Mix From the deli



PAYLESS
EVERYDAY

\$7.50 kg.

Thin or Cocktail Franks
From the deli

SCAN TO SUBSCRIBE TO OUR LATEST WEEKLY CATALOGUE STRAIGHT TO YOUR INBOX!

Specials available Wednesday 6th April until Tuesday 12th April 2022



WOOMBYE

20 BLACKALL ST

OPEN 7 DAYS!

PH: 5413 8007



Specials available while stocks last. Limit rights reserved. We reserve the right to correct any printing errors and omissions.

Outspoken turns focus to China

DURING the months of April and May Outspoken turns its focus to China. Not because of the geopolitical situation – although you'd have to say that makes it all the more pertinent – but because, as it happens, two of Australia's foremost China scholars have new books out.



Linda Jaivin has written the fascinating, *The Shortest History of China*, telling the story from earliest times right to the present moment; and former Prime Minister Kevin Rudd's new book *The Avoidable War, The Dangers of a Catastrophic Conflict between the US and Xi Jinping's China*, will be released this month.

Linda is the author of twelve books, fiction, non-fiction and memoir. She came to prominence many years ago as a novelist with such startling books as *Eat Me* and *Rock'n'Roll Babes from Outer Space*, but it turns out she's also a renowned specialist on China, working as a translator both of prose and film.

Kevin Rudd AC, has been at the forefront of Australia's relations with China for almost two decades. As the title of his book suggests - and unlike the hawks in Washington (and Australia, and to a certain extent Beijing) - he does not believe war is inevitable. He rejects the notion of 'de-coupling, containment, confrontation and perhaps, ultimately, the unthinkable itself.' He offers concrete alternatives.

And, because we're not always entirely focussed on the difficult questions, for our event with Linda we've also invited Warren Ward along to talk about his book *Lovers of Philosophy*, and for our event with Mr Rudd, Kári Gíslason to speak about his new book, *The Sorrow Stone*.

Details:

- Linda Jaivin in conversation: Wednesday April 20, 5.45 for 6.30pm, Maleny Community Centre. Tickets \$22 and \$15 for students.

- Kevin Rudd in conversation: Wednesday May 4, 5.45 for 6.30pm, Maleny Community Centre. Tickets \$25 and \$18 for students. www.outspokenmaleny.com



Bli Bli and District Garden Club Raffle ticket seller extraordinaire Noelene Hughes, President Sandra Godfrey and Treasurer Cherrie Deutschmann.

New Garden Club blooms in Bli Bli

ABOUT 50 people attended the inaugural meeting of the Bli Bli and District Garden Club Thursday morning (March 24) in the Bli Bli Uniting Church Hall in what was a great start for the fledgling group.

"It will be like a sister club to the Nambour Club," said President Sandra Godfrey. "It will give people even more opportunity to enjoy gardening and the camaraderie of other gardeners."

Sandra said Nambour had many members and its meetings were severely disrupted by COVID restrictions which sparked the idea for a smaller local club closer to home.

"Every time a meeting was organised at a new venue there would be another lockdown," she said. "Someone said 'why don't you start another club and keep it small?'. So I did."

"I want it to be a friendly, casual club – not too big. This is a lovely venue. The Uniting



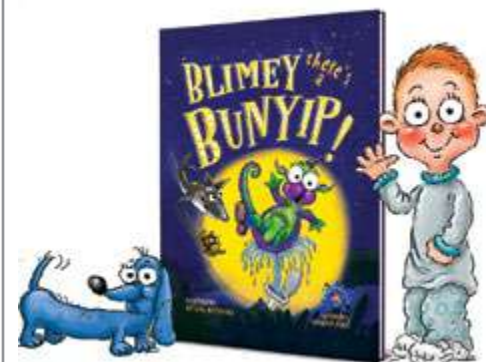
Church could not have been more accommodating."

▶ Meetings will be held on the fourth Thursday of the month from 9.30am at the Bli Bli Uniting Church Hall 14 Lefoes Road. Further information contact Anne on 0422 071 949.

Eudlo author pens kids' book about Bunyips

IN 1967 the International Board on Books for Young People, Switzerland, commenced the inaugural 'International Children's Book Day'. Hans Christian Anderson's birthday was chosen as the date, and so it's celebrated on April 2.

It's timely then that Eudlo author Veronica Perez has just released her first children's book about a very Australian mythical creature. "Blimey There's a Bunyip!" is a rollicking, rhyming tale of misadventure starring the bunyip and a cast of friends.



"Michael Salmon featured a bunyip in his 1972 children's book, 'The Monster That Ate Canberra'," said Veronica. "However, since then a bunyip has featured in only a handful of children's books, the most well-known being Jenny Wagner's 1978 book, 'The Bunyip of Berkeley's Creek'. For this reason I guess I shouldn't have been surprised to learn recently that many Australian children have never heard of a bunyip."

Veronica says, "Humour engages children in the joy of reading." She describes her own bunyip character as more mischievous and silly, rather than monster-like. "Although he does still live in a creek, Blimey Bunyip has some traits unique to a modern-day bunyip - traits sure to provide lots of laughs."

▶ Veronica is offering free author visits to schools and childcare groups in the local region. You can inquire about this and also order the picture book via: www.BraveFoxBooks.com

Friday Night
@ THE BOWLO
RAFFLES START AT 7:00.

SPIN TO WIN

LOTS OF PRIZES

- Mystery Boxes
- Meat Trays
- Other Prizes
- Member's Draw

Become a member today and enjoy the benefits. Loyalty Discount and entry into our Member's Draw.

Palmwoods Bowls Club 1931 - 2021
1 Nicklin Rd, Palmwoods | www.palmwoodsbowlsclub.com.au

SACRED Body

INITIATE TRUE WELL-BEING

Relax Re-Connect Rejuvenate

Massage
Far Infrared Sauna
Waxing
Lash & Brow Tinting
Chakrapuncture

0419 175 425 | sacredbody.com.au | f @
8 LITTLE MAIN ST PALMWOODS

Nambour ANZAC Day services return in full

NAMBOUR RSL is honoured to announce its ANZAC Day Dawn Service and Main Parade will be held on Monday April 25 with attendees advised to arrive early to ensure a good position.

Nambour RSL Sub Branch President Kim Symmons said this year represented the first opportunity to conduct both Dawn and Main Service Anzac Day activities since 2019.

The event welcomes locals, veterans and guests from the Nambour & hinterland region to the ceremony in Quota Memorial Park and through town.

Nambour RSL will welcome the local community to share in this emotional remembrance service at dawn in a moving tribute that acknowledges former and currently serving servicemen and women from Australia and New Zealand.

The ANZAC Day Dawn Service will include the traditional Last Post, one-minute silence and wreath laying.

This year's ANZAC day address, after the Main Parade, will be given by retired New Zealand Army Captain Guy Bridson who will give his perspectives on the Australian-Kiwi relationship.

The timings for the Anzac Day activities are as follows:

Dawn Service

- 0515 hours Ex Service marchers assemble in Ann Street in front of the WW1 Heroes Walk
- 0528 hours march to Wall of Remembrance, Quota Memorial Park

- Breakfast (egg and bacon roll – \$8, includes booking fee), commences after Dawn Service at RSL Club. Full Vaccination proof required upon entry.

- Any person who is attending for breakfast must be booked in.

- Booking link available on RSL Club web site through Trybooking.

Main Parade/Service

- 0830 Parade assembles in Howard Street.



Diggers march at Last Year's Dawn Service.

- 0855 Parade steps off, march down Ann St. salute at WW1 Heroes Walk, onto Mathew St assembling into Quota Memorial Park.
- 0900 Service commences
- Morning Tea at RSL Club after Service. (Full vaccination proof required to enter).

Nambour RSL Sub Branch

Currently consists of 173 Service members, who were born between 1924 and 1989. Members have experienced service in either WW2, Vietnam, Malaya/Malaysia, Somalia, East Timor, Iraq and Afghanistan, National Servicemen and ex service men and women.

The members are responsible for the core functions and objects of RSL Queensland, that being the welfare and wellbeing of all ex service men and women and veterans and family members, regardless if they are RSL members or not.

The Sub Branch relies on the active volunteers that assist with the objects of the RSL and fundraising to provide funds to assist carrying out those objects.

Modern ANZAC to provide Kiwi perspective

THIS year's ANZAC day main address in Nambour will be given by retired Captain Guy Bridson, a New Zealand born Australian living in Woombye with his wife Katrina and family.

Guy served in the New Zealand Army from January 1988 through to February 2009 and will provide a perspective from the New Zealand side of the acronym.

For most of his career Guy served in the Royal New Zealand Signals Corps as a Telecommunications Systems Engineer deploying to Cambodia in 1992/1993 with the ADF's Force Communications Unit and in 2003 to East Timor with the NZDF's Force Extraction Team.

He said New Zealanders always felt like Australia's "little brothers" but that only meant they tried harder, an attitude that paid dividends when preparing for action.

"We always looked up to our big brothers but we also wanted to perform at the same level," he said. "It made us try harder. I think."

"When I was posted to an Australian unit in Cambodia I was the celebrity Kiwi and there were no expectation that I'd be any good – which made me more determined to perform. It turned out we were actually more deployable than our Australian counterparts. We were individually better trained, by necessity. Because we worked in smaller teams we had to be across more things. The average Corporal in Australian army might be qualified on one or two systems where we had to be across four or five of them."

"Before the Cambodia deployment we were warned about the heat: 45 degrees in the shade. "So we prepared by doing two hours a day of high intensity endurance work in our raincoats. We were always told to 'train hard and fight easy'."

Guy also served as a projects engineer and capability manager in the Army HQ and was heavily involved with the New Zealand Army's modernisation program between 2000 and 2009. This program introduced new vehicles and technology. He was awarded a Chief of Army



Former Kiwi Captain Guy Bridson ... "We always looked up to our big brothers ... it made us try harder."

Commendation for this work and also earned the Australian Meritorious Unit Citation which went to members of the ADF's Force Communications Units who served in Cambodia.

Guy retired from the Army as a Captain and has since continued to work in the mobile technology space, with mobile security cameras in the taxi industry and driver safety products in the transportation sector.

He enjoys an active role in the Woombye community with Katrina and three children while his two adult children and two grand children also live nearby.

He joined Nambour RSL sub-branch in 2014. "Like most I wanted a break from army life but eventually gravitated back to like-minded souls for camaraderie," he said. "The RSL sub branch provides great support to veterans in the local community."

Sponsorship applications NOW OPEN

Applications close
30 June 2022



Recipient of the Rose Bartlett Award at Suncoast Christian College

Heritage | Palmwoods
Community Branch

Visit your local community branch at Palmwoods Plaza or call 07 5294 0600

O'Brien says Nambour rail duplication not forgotten

MEMBER for Fairfax Ted O'Brien has assured Nambour residents that he's still fighting for rail duplication (two tracks) to Nambour.

This follows an announcement of \$1.6 billion from the Federal Government for a new heavy passenger rail line along the CAMCOS corridor between Beerwah and the Maroochydore CBD.

Mr O'Brien described that announcement as a "whopping commitment - the single largest transport infrastructure project in the Federal Budget".

It comes on top of the \$390 million that Mr O'Brien secured for the Beerburrum to Nambour B2N rail upgrade a couple of years ago.

"At long last, Stage 1 of the Beerburrum to Nambour upgrades has begun," said Mr O'Brien, referring to his recent announcement that Hall Contracting had begun work on the project.

"But I remain concerned with Stage 2. We need a revised Stage 2 that provides for full duplication - that's two tracks - all the way to Nambour, designed to accommodate fast rail into the future.

"That's what I'm fighting for. I've announced \$5 million to fund a business case on this new Stage 2 design, but we're still waiting for the Queensland State Government to agree to match it."

► For information visit www.fastrail.com.au.

Men's Shed tool sale

THE Yandina Men's Shed (opposite the BP Service Station) is having a barbeque this Saturday morning, 9 April, and a sale of surplus tools. The tools range from small hand tools to hand power tools to stand-alone bench machines. The aim is to clear space to enhance the Shed's activity and help to fund further improvements to the Shed. We also welcome enquiries for membership.



Gavin Wuiske, left, and Pinnacle on Maud Sales Agent Frenchy Devos on site with the crane rising above.

Massive tower crane marks milestone for Nambour's changing real estate scene

A tower crane erected last month marked a milestone for Nambour's changing real estate landscape.

Grandview Developments General Manager Gavin Wuiske said the crane would enable progress to ramp up at 'Pinnacle on Maud' - a complex heralded as a first for Nambour - comprising 40 luxurious units within easy proximity of Nambour CBD.

"People will begin to see the superstructure emerge from behind the site hoarding in Maud Street," he said. "As far as I recall this is the first tower crane since back when Watpac did the Hospital upgrade following the global financial crisis.

"To have a project of this scale in Nambour from private industry is a great outcome for the revitalisation of Nambour. It is great to have a project developed and built by a local privately-owned family business, built by local trades using materials supplied by locals for local property buyers.

"There is no denying that it has been a long

hard slog for the past two years - to acquire the sites, amalgamate, get the approvals and start construction during the wettest period in Nambour's history.

"The weather has been a major challenge, in addition to Covid-related delays and material & labour shortages."

He said only four units remained available.

"We have saved the best until last. The four remaining units are the east-facing, top-level units and the level below."

Mr Wuiske said sale prices on the recently-sold units showed Nambour was catching up to the rest of the Sunshine Coast in terms of price growth. He said a lot of young locals had opted to buy their first property instead of continuing to rent, encouraged by Federal Government support via the Home Builder Grant and the State's First Home Buyers' grant.

► www.pinnacleonmaud.com.au. Sales Enquiries: Frenchy Devos, 0406 776 707 frenchy@amberwerchon.com.au.

Golf Charity drive to refurbish Hospital Palliative Care Rooms

MALENY Hospital Auxiliary is calling for players and sponsors for a Charity Day at Maleny Golf Club on May 13.

"The Golf Club has kindly nominated us as the beneficiary of this special event and we are very grateful," said Maleny Hospital Auxiliary President Jan Cornfoot.

"We are keen to get the message out that players and sponsors are needed to make this inaugural event a great success."

Of course, the best part is, it's all for a good cause.

"Among the many projects the Auxiliary is supporting at the Hospital is the refurbishment of the Palliative Care Rooms, incurring significant cost," said Jan. "So all funds raised from this event go to purchasing this much-needed equipment for the Maleny Hospital."

The event is an 18 Hole 4-Ball Ambrose for \$90 per person including a cart per group of four. Also included is a boxed lunch, prizes and a raffle. Business Sponsorship is \$100 per green.

► To donate prizes or to secure your sponsorship for the May 13 event email Presidentmalenyhospaux@gmail.com or 0437 757 891 or you can book your team at www.trybooking.com/BXNQC

Country House wins Most Romantic Getaway Award

THE Country House at Hunchy in Montville has been awarded the Winner's Gong for the Most Romantic Getaway by *Luxury BnB Magazine*.

Luxury BnB Magazine is the UK's only industry publication focusing on connecting with owners of top notch B&Bs, Inns, Guest Houses, Boutique Hotels and Holiday Lets. It is the first time an Australian B&B has won the award.

"We are thrilled to receive this award from the acclaimed industry focused *Luxury BnB Magazine*," said Owners Karin and Paul Orwin. "We stick by traditional B&B principles: a good bed, good company and simple home-cooked food done well. Those principles are the ones we learned in the UK from what is arguably the oldest established B&B industry in the world."



Join our volunteer community!

Looking to do something that is both rewarding and makes a difference in your community?

RangeCare's volunteers play a significant role in supporting both our clients and staff. Our generous volunteers help support our clients in living their best life by delivering a comprehensive range of services.

We are currently looking for volunteers who can fill the following roles:

| | | |
|---|---|---|
| • Aqua Aerobics Volunteer <i>Mondays in Nambour</i> | • Home Visiting Volunteer <i>Nambour area</i> | • Day Respite Centre Music Volunteers <i>Once a month in Nambour</i> |
| • Op Shop Volunteers <i>Fridays & Saturdays in Mapleton</i> | • Veggie Gardener <i>Nambour area</i> | • Day Respite Centre & Kitchen Assistant <i>In Nambour & Gympie</i> |

Volunteer Positions also available in the Gympie Region

All applicants are required to have full COVID vaccination or proof of medical exemption to volunteer at RangeCare.

To find out more or to become a RangeCare Volunteer, give us a call on 07 5455 7044 or visit www.rangecare.com.au/volunteer





Blackall Range Care Group

Live your best life!



Maleny artist launches coworking space for creatives

MALENY artist Evelyn Joy had a long held dream to create a co-working space for creatives, and in early February that dream was realised with the opening of The Joy Collective in Coral Street.

"I found the most beautiful space, with lots of light, high ceilings and a wonderful atmosphere," Evelyn said.

"And I can't wait to share it with creative, passionate, hard working small business owners like myself. Now it is just waiting for my tribe".

The building boasts seven beautifully fitted out spaces. There are four private rooms and three shared spaces.

"We have a kitchen, a courtyard, workshop space and a gallery for artists to exhibit their work," Evelyn explained. "The spaces are available for short term, long term or even day hire and it is the perfect venue to run creative workshops".

"I think people who are creative often find that they are inspired by bouncing ideas off other people," said Evelyn. "So much magic hap-



Evelyn Joy: "I found the most beautiful space, with lots of light, high ceilings and a wonderful atmosphere."

pens when people get together. It is my dream that The Joy Collective becomes a destination for artists and entrepreneurs alike".

► The Joy Collective is at 1/37 Coral Street, Maleny. To find out more, you can contact Evelyn on artbyevelynjoy@gmail.com or call 0493 223 118.

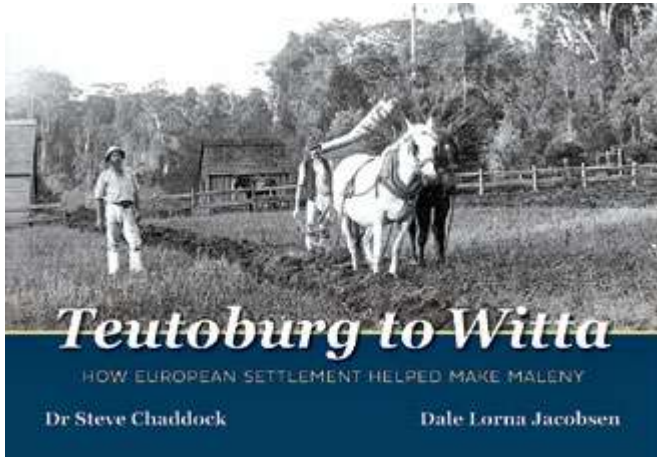
Teutoburg to Witta: How European settlement helped make Maleny

DRIVE around the locality of Witta today, and you can't help but notice all those German-sounding names. There is a reason for that. In the late 1880s, a few young men from the German Settlement south of Brisbane at Bethania decided to move out of the homes of their migrant parents, to strike out on their own. At the time, land was opening up on the Blackall Range.

Witta locals, Steve Chaddock and Dale Jacobsen, joined forces to create the book, *Teutoburg to Witta*, to celebrate the mostly European early settlers who called their district Teutoburg - with all those German-named streets. During WW1, in 1916, the name was changed to Witta.

The book created by Steve and Dale tells the story of how a community formed, and contains 100 illustrations of photos, maps and diagrams, and is for sale for \$25.

Local business have shown a keen interest in this book. ReMax Hinterland, of Maleny, have generously sponsored design and production. Witta businesses, The Crooked Fringe Hairdressers and Sommer's Fuel Supplies have



On the cover ...

Fred Warne, a British settler, stands moustachioed with his pipe, hat, and waistcoat, in a field behind his horses, ploughing a furrow for the late corn crop in the 1890s. The identity of the second man is unknown. Behind the main action, we can clearly see the timber slab and weatherboard-walled buildings, constructed under split pine shingle rooves. The post and rail fence around the field, designed to be stockproof, extends into the distance as it defines new boundaries of ownership. European practices had come to the Range.

agreed to sell the book, as have Rosetta Books and Maleny Information Centre in Maple Street.

► For more information, visit website: www.dalelornajacobsen.com or email: dalelornajacobsen@bigpond.com Ph: 0413 843 652.

Woodies Wonderful Weekend of Wood

THE Blackall Range Woodcrafters Guild (the Montville Woodies) is holding a two-day Open Day of all things wood from April 30 to May 1.

The event to be held at the Woodies clubhouse 230-238 Balmoral Road, Montville, 3km south of the town centre will provide an opportunity for people to enjoy a day out in the beautiful hinterland to experience the woodworking sheds and the beautiful handmade timber articles which make excellent gifts.

There will be woodworking demonstrations, timber for sale and a broad range of craft items and toys available for purchase.

In addition, there will be a "Tool Cave" stocked with pre-loved hand and power tools for sale at attractive prices.

Come along and indulge your inner woodworker, or buy some early Christmas presents for the family.

The Montville Woodies is a non-profit community organization which provides woodworking facilities and training for Sunshine



Coast residents as well as enjoying helpful assistance and camaraderie of other members.

► Look for our Entry sign on Balmoral Road, 3 kilometres south of Western Avenue. Website: www.blackallrangewoodies.org.au Email: secretary@blackallrangewoodies.org.au

ELITE FOOT CARE
Podiatry • Orthotics • Footwear

Online Bookings Available

Call Elite Foot Care on
5328 3588
to book
your appointment

www.elitefootcare.com.au
For online bookings

DO YOU HAVE FOOT AND LEG PAIN?

The team at Elite Foot Care can treat:

- Heel Pain
- Achilles Pain
- Shin Splints
- Knee Pain
- Hip Pain
- Lower Back Pain
- Arthritis
- Ingrown Nails
- Kids Podiatry

- Private Health Rebates • Medicare Rebates
- DVA Registered • NDIS • Workcover
- Home Care Packages • No Referral Needed

4/40 Wilson Avenue, Woombye
Corner of Blackall Street and Nambour Connection Rd

OPEN HOURS: Mon-Fri 8:30am - 5pm www.elitefootcare.com.au

GOODYEAR
AUTOCARE *Good to go*

ALLCOAST
TYRE SOLUTIONS

22 Coronation Ave, Nambour

Ph: 07 5343 8344

(Opposite the Nambour RSL)

Providing the right advice, the right product and best value for money in tyres and services while meeting budget and understanding your driving style.

OUR SERVICES www.allcoasttyres.com.au

TYRE FITTING
Car, SUV & 4WD's
Mowers & Wheel Barrows

- Tyre Repairs
- Tyre Rotations
- Wheel Alignments
- Fleet Tyre Servicing & Management
- 24/7 Commercial Mobile Tyre Service

(All Tyre brands available)

Locally owned by John & Peter O'Leary

Ask us about our 25% off tyre deals!



What's On in the Hinterland

Local Sport, Events and Entertainment coming up. Preference given to local events of widespread interest. Please check details with organisers. Submissions to editor@sunshinevalleygazette.com.au.

Every Saturday: Yandina Country Market from 6am to 12pm, North Street, Yandina.

Every Saturday: Kenilworth Country Markets from 8am to 1:30pm at Kenilworth Town Park, Charles Street.

April 8-10: Queensland Under 13, Under 15 and Youth (Under 17) State Championships at Sunshine Coast Weightlifting Club at Crusher Park, in Crusher Park Drive, Nambour.

April 9: The Takeover Band plays 7pm at The Black Box Theatre, in William Street Nambour at The Old Ambulance Station.

April 9: Yandina Men's Shed BBQ & Surplus Tools Sale at the Shed opposite BP Service Station.

April 9: Rugby League SCGRL Div 1 Men Nambour Crushers v Caloundra at Caloundra 6pm.

April 9: 9am until noon Second Saturday Handmade and Vintage Market Yandina School of Arts Hall. Stall holders preparing special items for Easter treats. Contact Lyn 0407 828 431

April 9 and 10: Yandina Bowls Club (Club Yandina) Open Fours Tournament.

April 10: Gordie Tentrees' exclusive Nambour afternoon show at the Black Box Theatre Tickets: www.trybooking.com/BXWNG.

April 15: Easter Production at the Church at Sanctuary Park from 9am, 22 National Park Road Nambour.

April 15: Nambour Wesleyan Methodist Church Good Friday Service 8am. 165 Perwillowen Rd, Burnside.

April 15-18: Clouds The Barrel Maleny is open for Easter dining (Breakfast, Cabinet Food and High Teas) through Easter.

April 16: Buderim Easter Fair from 8am until 2pm at the Buderim Memorial Hall, on the corner of Church Street and Main Street.

April 16 & 17: Easter Open Gardens Festival. Three open gardens in Montville on Saturday 16 and Sunday 17 April from 9am to 4pm. www.montvillegarden.com, www.facebook.com/montvillegarden.

April 17: Nambour Wesleyan Methodist Church Easter Sunday Service 9am, 5476 4263.

April 20: Shine a Light for Autism Seminar 2pm-3pm at Vitality Village. RSVP admin@compassinc.org.au.

April 22: Nambour Forecourt Live!

April 23: Rugby League SCGRL Div 1 Men Nambour Crushers v Kawana at Kawana 6pm.

April 22-24: The Playhouse Maleny Showgrounds presents Playhouse Creatures from April 22-24 and from April 29 to May 1. Book at www.malenyplayers.org or directly through www.Trybooking.com.

April 22-24: Sunshine Coast Kennel Club Dog Shows at Beerwah Sportsground. 0400 018 877.

April 22-30: Revlon Girl plays at Lind Lane Theatre. Bookings available at lindlane.com.au/ whats-on. Group bookings: 1300 732 764.

April 23: Ambulance services Centenary Open Day at the Tramway Terminal in Mill Street from 10am-2pm.

April 27-May 18: Breastscreen Maleny at Maleny Hospital. Phone 13 20 50 or www.breastscreen.qld.gov.au.

April 30-May 1: Blackall Range Woodcrafters Guild Two Day Open Day, 230-238 Balmoral Road Montville. secretary@blackallrange-woodies.org.au.



Photograph: Trevor Peddler

Sanctuary Park has undulating land which make a natural amphitheatre for an Easter production.

Easter Production at Sanctuary Park

THE church at Sanctuary Park invites everyone to join with them to reflect on the Easter story on Good Friday. Sanctuary Park has over five hectares of undulating and tranquil gardens which will be utilised as a natural amphitheatre for an Easter production.

This production will centre on the Easter story from the perspective of Peter, Roman Governor Pilate, Mary Mother of Jesus and Mary Magdalene. Costumed characters will have their stories narrated as they reflect at each of the staged areas of the story.

A hot-cross bun and cuppa morning team will be served in the gardens following the production. BYO chair or blanket to sit on.

All visitors are welcome to roam through Sanctuary Park's parklands. There is plenty of room for children to kick a soccer ball around as well as a fenced playground for younger children. Transport will be provided from the carparks for elderly and impaired visitors to be chauffeured to the lower-level seating area.

► Entry to the 9am event is free and we expect this it will run for about 75 minutes. On Easter Sunday, Pastor Steve will conclude this Easter weekend production, focussing again on those four Easter characters. Sanctuary Park is at 22 National Park Rd, Nambour. For more info contact Mark Wall 0456 789 294.

May 4: Suncoast Christian College Woombye Open Morning, 9-11am at the College cnr Schubert and Kiel Mountain Roads, Woombye.

May 8: Rugby League SCGRL Div 1 Men Nambour Crushers v Caboolture at Caboolture 3.30pm.

May 7, 8: Mother's Day Weekend at Flaxton Gardens. info@flaxtongardens.com.au to book.

May 13: Maleny Hospital Auxiliary is calling for players and sponsors for a Charity Day at Maleny Golf Club on May 13. Ph 0437 757 891.

May 22: Tramco Suitcase Rummage Sale at Nambour Tramway Terminal in Mill Street 9am-1pm. See Nambour Tram on Facebook for details.

May 27 & 28: Maleny Show Friday & Saturday.

June 10, 11 & 12: Sunshine Coast Agricultural Show.

July 8-10: Queensland Garden Expo at Nambour Showgrounds.

June 20 & 21: The Mobile Donor Centre visits Maleny every 3 months at the Showgrounds, 13 Maleny-Stanley River Road. The next visit is set for Monday 20 June 7am-2pm Tuesday 21 June 11.30am-6pm.



Photograph: Creative Persona

Riette de Jager, left, as The Revlon Girl, and Christine Lynn as Rona.

Revlon Girl plays at Lind Lane Theatre

MORE than 50 years ago, Aberfan, a small coal mining town in Wales, was irreversibly changed in an instant when 144 people, mostly school children, were killed by a coal-waste landslide. That 1966 disaster is the back-story of *The Revlon Girl* performed at Lind Lane Theatre, 16 Mitchell St Nambour.

Director Glenda Campi has found a moving play so worth sharing and based on actual events. The piece tells the story of a group of grieving mothers who met every week above a local hotel to talk, cry and even laugh without feeling guilty, while trying to re-build their lives.

Written by local Swansea writer Neil Anthony Hocking in 2015 the little play was nominated for the Olivier Awards. Hocking has an ability to bring you to tears and then, just a split-second later, have you in a fit of laughter.

At one of the meetings, the women look at each other and admit how much they had let themselves go. Afraid that people would think them frivolous, they secretly arrange for a representative from Revlon to come and give them a talk on beauty tips. Eight months post the catastrophe we meet the women. Was the Revlon night a success?

► The Season runs from April 22-30 with bookings available at lindlane.com.au/ whats-on. Group bookings: 1300 732 764.



Photograph: Cynthia Lee

Artists meet two nights a week to create a brand new body of work in just eight weeks.

First 'Takeover Event' in Black Box Theatre

SEVEN musicians who had never previously met have joined a novel experimental process at the Black Box Theatre in Nambour.

The artists have been meeting two nights a week with the aim of developing a brand new body of work in just eight weeks.

It has been happening since February as part of our first Black Box Theatre Takeover.

"Takeover is our pilot project giving groups of artists control over the use of the Old Ambo spaces to explore new ways of creating work," a spokesperson said. "The public are invited to join Basket of Hammers for a night of pure musical magic on Saturday April 9 from 7pm and see the fruits of this bold experiment."

The Takeover Band will play brand new material on the night. They will also be joined by bands Homewood Sapiens, Fat Dog Morgan, Chucho Bruno and The Mad Crept.

"It's a chance to gather together, make some noise and re-embrace the magic of the arts in our lives. There will be a bar, live music, a cool space and fabulous company."

► The Takeover Band plays 7pm, Saturday April 9 at The Black Box Theatre, in William Street at The Old Ambulance Station, Cnr Howard & William Streets, Nambour. Tickets are on sale through www.humantix.com and search "the takeover"

Dog Shows are back at Beerwah

THE only dog shows on the Coast, run by the Sunshine Coast Kennel Club, are being held again from April 22 to 24 at Beerwah Sportsground.

"We are holding four conformation shows which are the 'beauty contests' judging the best dogs in each breed to end up with a Best in Show," a spokesperson said.

The first show is on Friday evening April 22 at 5pm. On Saturday the 23rd we begin the next show at 8.30am and follow it with an Open Show in the early afternoon. The final show is on Sunday morning at 8.30am.

"It's a great place to come and visit if you like dogs," the spokesperson said. "The variety of breeds being exhibited is diverse and interesting. As well as these shows, there is a Flyball competition on Sunday starting at 9am and run for most of the day."

► A coffee van and a canteen will operate. For more info contact Sonia 0400 018 877.



EASTER we are open

Good Friday, 15 April | Easter Saturday, 16 April | Easter Sunday, 17 April | Easter Monday, 18 April



CLOUDS THE BARREL

Why not make it a relaxing weekend with a stay at Clouds Montville?

The Café at
Clouds Montville
will also be open for

BREAKFASTS
in the mornings

CABINET FOOD
through the day

HIGH TEAS
in the Afternoon



ALL DAY CASUAL DINING | TAKE AWAY | FUNCTIONS | WINE FLIGHTS | BEER PADDLES | GRAZING PLATTER | KIDS PLAY AREA

07 5429 6361

787 Landsborough-Maleny Road

www.cloudsretreats.com.au

OPEN DAILY 8am - 4pm

Orchestras team up for Rangebow Festival

THE Rangebow Festival, coming to the Blackall Range 10-13 August 2022 will have as one of its major show pieces a brilliant combined performance by the newly formed Rangebow Children's Orchestra and the Sunshine Coast Symphony Orchestra.

This is the Symphony Orchestra's 50th anniversary year and this performance is one of the few performances on the Coast, so the festival organisers are thrilled they have agreed to be involved. And this is just the beginning. You can explore the whole exhilarating program at www.therangebowfestival.org

With diversity and inclusion at its heart, the team from The Rangebow Festival have brought together a working partnership between Topology (a Brisbane-based indie classical quartet) and the Sunshine Coast Symphony Orchestra.

The orchestra have generously agreed to perform original musical compositions created together with the Rangebow Children's Orchestra at the Festival's Moonlight Symphony Event, on Friday 12 August in Russell Family Park in Montville. This will be a tremendous tour de force that will hopefully inspire more children to want, indeed yearn, to learn to play

musical instruments.

There are four schools involved in a new mentorship program: the Montville State School, Maleny State School, Glenview State School and Maleny State High School. The mentorship is a creative workshop program intended to give children an opportunity to work with professional musicians, something that rarely happens with regional and small schools.

Topology set up creative workshops in the schools and work with a group of children at each primary school to enable them to compose their own piece of music. At Maleny State High School, individual students will be mentored to work on their own compositions. Topology will arrange each of these pieces to be played by a full symphony orchestra.

This means that the children get a rare opportunity to perform on stage with professional artists, premiering their compositions and giving them a chance to hear what they could sound like if they continue their instrument studies.

It is also a great moment for those talented artists in the Sunshine Coast Symphony Orchestra and Topology to perform with our



The mentorship is a creative workshop program intended to give children an opportunity to work with professional musicians

young generation, ensuring that the festival embraces all of our community.

► Sponsorship opportunities remain available for the Mentorship Program and if anyone would like to be associated with and support this unique creative opportunity, contact Skye Parker, Creative Arts Director of The Rangebow Festival at skye@therangebowfestival.org.



Maleny Players Presents Playhouse Creatures

THE Maleny Players next production is packed with historical costumes, artefacts and morals of the London theatre world of the 17th Century. The play is based on real people: the first actresses to perform during the Restoration period after the Royal Decree of Charles II on his return from exile to the English throne. It's on at The Playhouse Maleny Showgrounds from April 22-24 and Saturday April 29 to Sunday May 1. Book at www.malenyplayers.org or directly through www.trybooking.com.



From left, Jenny Powell, Lorraine Buhk and Jenny Christensen prepare for the Fair.

Crafts, food, plants at Buderim Easter Fair

THE Buderim Easter Fair will take place on Saturday April 16 from 8am until 2pm at the Buderim Memorial Hall, on the corner of Church Street and Main Street, Buderim.

There will be a wide range of crafts, some amazing food and a variety of plants available for purchase.

Buderim Historical Society members including Jenny Powell, Lorraine Buhk and Jenny Christensen have been getting ready for the big day. About 70 stall holders regularly participate at each Fair and come from as far afield as Brisbane.



C J Lucas and Col Nation have teamed up for the exhibition.

Endless Summer exhibition in Yandina

THE featured art at the Yandina Historic House at the moment is an exhibition called "The Endless Summer".

This colourful exhibition features works by C J Lucas and Col Nation and celebrates the surfing culture on the Sunshine Coast.

The House is run by the Yandina and Districts Historical Society and is open Monday to Saturday 9.30am-2.30pm. Take your time and enjoy the wonderful Devonshire tea served by the fantastic volunteers at this highly popular venue and see the fascinating historic display in the museum.



Stallholder Chris with her beautifully crafted cards, albums and much more.

Yandina Second Saturday Handmade & Vintage Market

THE Handmade and Vintage Market has resumed at the Yandina School of Arts hall, with the next one to be held on April 9.

"We have a varied line-up of stallholders, some new & many of our regulars returning," said Market Coordinator Lyn Simpson.

"Stalls include pottery, crochet, macrame, paper crafts, mosaics, plants, art work, patchwork and sewing which is just a cross section.

There is something for everyone and every occasion. Come and meet the makers & say hello."

► For details contact Lyn on 0407 828 431.

HANDMADE and VINTAGE MARKET

Yandina School of Arts Hall
SECOND SATURDAY
April 9th | 9am until noon
ALL LOCALLY MADE

Stall holders preparing special items for Easter treats
Contact Lyn 0407 828 431

Explore three Open Gardens this Easter

GREEN thumbs and sticky beaks are in for a treat this Easter as three Range residents open up their gardens to the public.

The Easter Open Gardens participants include three diverse gardens:

- Kyleigh and Michael Simpson's "The Shambles" at 85 Western Avenue Montville, *pictured*;
- Louise and Jeff Tasker's "Lower Woontooba" at 238 Western Avenue Montville; and
- Rowena Cavanagh's "Wongawilli" at 19 Manley Drive Montville.

Rowena Cavanagh has raised money for reconstruction in Fiji after cyclone

Winstone in 2016. Rowena has also provided valuable assistance with Open Gardens at "The Shambles".

The event, featuring three local gardens will raise much-needed money for charity.

► A plant stall and refreshments will be offered at The Shambles; there will also be a plant stall at Lower Woontooba. The gardens are open on Saturday 16 and Sunday 17 April from 9am to 4pm. Entry \$10 to each garden (cash only please) children free. See www.montvillegarden.com or www.facebook.com/montvillegarden.



NAMBOUR NEWS & CASKET

WE FIX MOBILE PHONES

- Stationery
- Magazines
- Lotto & Instant Scratch Tickets
- Newspapers
- Gifts

We can **home deliver** your newspapers and magazines and we are also agents for Cartridge World.

Shop 28, 52-54 Currie St, Nambour
P: 5441 2029 | @NambourNews

HAPPY HEALTHY SMILES

\$199*

welcome offer

*New patients only. T&Cs available online. Valid to 30.03.22.

Blackall Terrace Dental

N A M B O U R

New patient welcome offer

TOTAL COST: \$199*

- Comprehensive exam
- Oral cancer screening
- Intraoral photography
- All necessary x-rays
- Scaling & polishing
- Topical fluoride
- Treatment planning

Call to book or go online
(07) 5441 3583
blackallterrace.com.au

Scan to book your next visit.



The next market will be held Sunday May 22 from 9am.

Initial Rummage Sale creates a buzz at Terminal

NAMBOUR'S first ever Suitcase Rummage Market was a huge success with suitcases brimming and the Tram Co Terminal buzzing with bargain hunters on Sunday March 27. Nambour Tram Co Director & Suitcase Rummage Market Organiser Rhonda Billett said a live DJ kept people entertained with chilled out Sunday vibes while a sausage sizzle fed the visitors.

"The stall holders were thrilled and after a steady build-up the weather held off and we had a big group attend in the end," she said.

"Families, grandparents and teens were all in attendance — even though the weather wasn't terrific and we lost a few Suitcase stall holders to Covid, we have many already committed to the next Nambour Suitcase Rummage event.

"We have this lush, green space as well as a beautifully designed and built Terminal building at Nambour Tram Co. And we want the community to be able to enjoy this community asset. So the Suitcase Rummage concept is a great fit and it works with Nambour's vintage vibe."

Rhonda said the next market would be held Sunday May 22 from 9am until 1pm where all things vintage, pre-loved & handmade will once again be for sale. Stay up to date via the Nambour Tram Facebook page. Suitcase Rummage sites are only \$5 per suitcase. Bookings can be made via messaging the Nambour Tram Facebook page.

New Nambour Tram Co gifts available

NAMBOUR Tram Co have some new Tram merchandise available for purchase thanks to a recent grant from Sunshine Coast Council.

"The 'people's Tram' is on track to be running on the Nambour heritage-listed cane train tracks by the end of 2022," said Tram Co Director Rhonda Billett.

"The tram tracks are a permanent, heritage-listed fixture in the town. They are not going anywhere, so activating them will bring huge benefits to Nambour," Rhonda said.

"The amount of world-wide interest we have received so far is mind blowing.

"The Tram is a world-first, being solar run on a two-foot gauge train track.

"Enthusiasts are constantly messaging us on the project and many people are wanting to come from far and wide to see it.

"Unfortunately, there have been delays in getting the tram build complete due to Covid 19, but we are getting close to being able to get it up and running on the tracks."

Rhonda said the Nambour Tram Co Board of directors met recently with interstate rail safety accreditors and authorities to finalise the Tram build and operations to Australian Safety Standards.

"There is a lot of paperwork involved with this project behind the scenes — all done by volunteers — but all the loose ends are nearly



Div 10 Cr David Law and Rhonda Billett model the new t-shirts and enviro bags.

all tied up."

Rhonda said she hoped to have some more news to share in the coming weeks about the project.

In the meantime, t-shirts and enviro bags are available for purchase at future Tram Co terminal events, such as the next Nambour Suitcase Rummage Sale on Sunday May 22 from 9am until 1pm. Bags are \$10 and t-shirts are \$30 with more items coming soon.

▶ Follow Nambour Tram on Facebook or message the Tram Facebook page for more information on how to get involved, volunteer and be a part of the fun.

Woombye Library offers 'lifetimes of reading'

THE Woombye Community Library boasts some wonderful autobiographies/biographies about Australian sung and unsung heroes who rise to the fore.

• "Walking Towards Thunder" tells the story of Former Detective Chief Inspector Peter Fox, a hero in many people's eyes. The Police Officer with 36 years in the Hunter region, NSW, rose to National prominence in 2012 for his major role in speaking out for the victims of the abuse within the church. "Walking towards Thunder" details the culminating horrors our Police Force face every day. It reveals the cover ups, and the way sexual predators were moved around. It shows the backlash Peter faced and the lengths those in power will go to avoid facing the truth.

• Daniel Keighran VC. A raw, honest, humorous, and inspirational story of a modern soldier and the burden of heroism. "Courage Under Fire" is the memoir of a remarkable Australian, packed with tales of multiple tours, accounts of extraordinary camaraderie, and reflection on the unseen cost of service.

• Mark Morri, the veteran crime writer brings to life the jaw-dropping true story of a Political trailblazer and a woman of force. "A Woman of Force" is the true story of Deborah Wallace, the cwwop known as the Gangbuster.

The library has many other yarns about Australian's that are well worth a read including: Dick Smith "My Adventurous Life"; Paul Malone "ALF: the Alan Langer Story"; Sam Bloom "Heartache and Birdsong"; Hilary Burden "A Story of Seven Summers"; Pixie Annat "Champion of Nurses"; General Peter Cosgrove: "My Story"; Malcolm Turnbull: "A Bigger Picture".

The library is open Mon-Sat 9am -12noon. Mon-Fri 2-5pm. Run solely by volunteers, we welcome new members and new volunteers. The library will be closed from Good Friday and reopen Tuesday 19th April

We extend deepest Sympathy to Jeff Martinuzzi's Family on his passing. Jeff was Treasurer for the past couple of years and a much-valued member of our Library Team. Happy and safe Easter to all.

History in the making. Woombye Heritage trail emerges

DETAILS of a proposed Heritage Trail for Woombye are emerging.

Woombye Historical Group Coordinator Lyn Walker has been coordinating ideas and ensuring all interested parties have input, especially regarding grants etc to fund the trail.

The starting point will be the Woombye School of Arts Hall where people will be able to collect Heritage Trail booklets and view old photos, stories and other historical items in the library.

Ms Walker said Council had allocated

Heritage Trail funds for signage and a story board in front of the Hall and a committee had considered council plans for the Trail.

Members agreed the trail should commence in front of the Hall and library entrance. They also noted the necessity to upgrade the library entrance ramp to full disabled status.

The Hall has always played a central role in the life and times of Woombye. It has been the location for taking the salute during Beersheba and Anzac Day parades.

ALIGN TECH

TRUCK WHEEL ALIGNMENT SPECIALISTS

- TRUCKS
- TRAILERS
- CARAVANS

EXPERTS IN SPECIALISED WHEEL ALIGNMENTS

QUALIFIED MECHANIC FOR OVER 15 YEARS. JOSH : 0473 155 905

SUNCOAST
CHRISTIAN COLLEGE



CELEBRATING THE
DISTANCE TRAVELLED
SUNCOAST CHRISTIAN COLLEGE
WOOMBYE

YOUR JOURNEY
2021
SUNCOAST
CHRISTIAN COLLEGE

NO matter their **STARTING** point, we **CELEBRATE**
most THE **DISTANCE** travelled

SUNCOAST CHRISTIAN COLLEGE

OPEN MORNING

WEDNESDAY 4 MAY **9-11AM**

Your family will be warmly welcomed into the Suncoast community
where we look forward to sharing our College with you.

www.suncoastcc.qld.edu.au/open-morning



Please scan here to
BOOK YOUR SPOT

p. (07) 5451 3600
e. info@suncoastcc.qld.edu.au
a. Cnr Schubert & Kiel Mtn Rds, Woombye

SUNCOAST
CHRISTIAN COLLEGE





Local bank chips in to support the Compass Institute to stay a 'cut above' the rest

IT has been a winning start to the new year for Compass Institute's social enterprise "Rakes and Panes," with Heritage Palmwoods Community Branch providing over \$11,934 in funding for new green equipment.

The Rakes and Panes program is one of the first social enterprises developed by the team at the Compass Institute and has now been running for over ten years. Designed to provide trainees with a platform to meaningfully contribute to their community, the Rakes and Panes enterprise provides garden and maintenance services such as weeding, lawn mowing and window cleaning.

In alignment with the Compass Farm sustainable developments, Rakes and Panes was invested in reducing their carbon footprint by purchasing new electric equipment.

Compass Farm Manager, Andrew Diggines said, "We have a goal to be proactive in all our enterprises and campuses. We have been working to increase our sustainable practices at the farm and it made sense to extend this to our services outside of the campus too."

"With the generous support from Heritage and its joint venture partners Palmwoods Community Branch we have been able to purchase new electrical lawn mower, whipper snipper and batteries.

"We have also been able to purchase a chipper that will support us to provide a comprehensive service offering in our communities as well as maintaining all of the Compass Campuses from Caboolture to Gympie without detriment to our environment."

The Compass Institute CEO David Dangerfield added that the ongoing support and partnership of local community leaders such as Palmwoods Community Branch, is integral to the success of the Compass Institute and its many enterprises.

"Our success is built on the generosity of our business partners and supporters. The team at the Heritage Palmwoods Community Branch have been integral to the Compass success story since we began nearly 20 years ago and to still have their ongoing support in this way is inspiring. We cannot thank them enough."

Workshop to shine a light on Autism & help raise \$100,000

LOCAL charity Compass Institute Inc. has provided pathways for life-long learning, skills-based training and vocational opportunities for people with disabilities for over 30 years, helping young people with autism to find their place in the world, and in workplaces.

Compass Founder and CEO, David Dangerfield believes in ensuring opportunities for everyone to create the life of their choice and that ultimately, we are all on the spectrum.

David also says that business owners who understand autism make better leaders and strong, inclusive workplaces. On 20 April David will offer a workshop for business to explore what it means to be neurodivergent and help managers relate to and inspire their teams.

April is International Autism Awareness Month, and Compass is committed to raising awareness and understanding of ASD (Autism Spectrum Disorder) and raising funds to continue to support young adults with ASD and their families.

Compass has partnered with local electricity provider LPE for the "Shine a Light for Autism" Campaign throughout April.

The campaign's ambitious but vital goal is to raise \$100,000 to develop new sensory spaces and add more resources across Compass' campuses.

Sensory spaces and resources are designed to help reduce stress and over-stimulation and help to bring a sense of calm to promote learning and development.

Examples of sensory spaces and equipment at Compass include dim lighting, lava lamps, a variety of textures on floors and walls, tactile



Compass Founder and CEO, David Dangerfield

objects, therapy swings, compression blankets, mild therapeutic scents and calming music.

These options may also be used in workplaces and many leading businesses from schools to supermarkets have begun adapting their environments.

David believes many workplaces can make small but meaningful changes to support every team member to feel calmer, be more productive and engaged.

"In April we are shining a light on autism to celebrate our differences, promote understanding and build acceptance of autism. I believe that together we can show how the Sunshine Coast

is a community that sees the whole spectrum, including across our working environments," David said.

"Autism is more common than people realise and many of us have a connection to someone with autism, so our biggest aims this April are to encourage everyone to be open to understanding more about autism and building more acceptance in the community.

"People with autism can offer unique insights and gifts that can really benefit workplaces and teams of all kinds, such as commitment to routines, ability with numbers and people skills, or laser-like focus; we've seen time and again how a person with autism can light up a room and often be the hardest working team member in the place," David says.

Business owners, managers and HR team leaders are invited to attend the seminar led by David.

► Seminar details: 20 April 2022, 2pm - 3pm at Vitality Village. It is a free event but places are limited. RSVP: admin@compassinc.org.au.

**IT'S TOO LOUD
I FEEL TOO MUCH
THE WORLD FEELS SCARY
OVERWHELM**

For people with Autism, switching off overwhelm and finding calm, doesn't come naturally. Autism affects how someone thinks, feels, interacts and experiences the world around them.

Join Compass and LPE this April as we shine a light on Autism and help transform local lives of children and young adults living on the spectrum.

lightitupblue.org.au

Supported by LPE

PROMOTION AVAILABLE FROM
7TH APRIL 2022 - 30TH APRIL 2022

EASTER WITH **KINGS**

SUNSHINE MITRE 10

3.3M PRO FISHING KAYAK

ONLY: **\$599**



BUILD THE ULTIMATE KAYAK SET UP WITH THESE ACCESSORIES



FISH FINDER MOUNT

PREMIUM MESH KAYAK SEAT

PREMIUM CARBON FIBRE PADDLE

FISHING ROD HOLDER MIDDLE/SIDE

ACCESSORIES SOLD SEPARATELY

TOURER ROOF TOP TENT

ONLY: **\$849**



3Mx3M GAZEBO

ONLY: **\$143**



ADD A MESH FLOOR TO YOUR GAZEBO!

3Mx3M MESH FLOOR

ONLY: **\$44**

6Mx3M MESH FLOOR

ONLY: **\$69**



6Mx3M GAZEBO

ONLY: **\$274**

TRANSFORM YOUR SETUP WITH A GAZEBO TENT

ONLY: **\$179**

*GAZEBO SOLD SEPARATELY



RECHARGEABLE LED WORKLIGHT

ONLY: **\$39.95**



45L



75L

STAYZCOOL FRIDGE/FREEZERS

45L: **\$659**

75L: **\$889**

SUPATRAIL DOUBLE SWAG

ONLY: **\$214**



PINK DOUBLE SWAG

ONLY: **\$213**



EASILY TRANSPORT YOUR SWAG WITH A CANVAS SWAG BAG
ONLY: **\$75**

HEAVY DUTY STORAGE BOXES



45L

ONLY: **\$110.95**



78L

ONLY: **\$153.95**

ADD THESE ESSENTIAL CAMPING ACCESSORIES!



PORTABLE CAMPING KETTLE

ONLY: **\$24.95**



LED HEAD TORCH

ONLY: **\$19.95**



DOMIN8R LIGHTBAR 22"

ONLY: **\$59**



DOMIN8R LIGHTBAR 32"

ONLY: **\$64.95**



DOMIN8R LIGHTBAR 42"

ONLY: **\$69**



LIGHTBAR WIRING HARNESS

ONLY: **\$34.95**

PREMIUM CAMP OVEN/STOVE

ONLY: **\$223**



GRAB THESE ACCESSORIES AND BRING THE KITCHEN TO YOUR CAMP



CAMP OVEN/STOVE SMOKER
ONLY: **\$169.00**



CAMP OVEN/STOVE WATER BOILER
ONLY: **\$89.95**



CAMP OVEN/STOVE BBQ PLATES
ONLY: **\$94.95**

GAS HOT WATER SYSTEM

ONLY: **\$314**



THUMPER MKIII AIR COMPRESSOR

ONLY: **\$133**



200W SOLAR BLANKET W/ MPPT REGULATOR

ONLY: **\$249**



SUNSHINE MITRE 10



WWW.SUNSHINEHARDWARE.COM.AU
980 NAMBOUR CONNECTION RD
NAMBOUR



PH: 5441 9900

IMPORTANT PLEASE READ: ON SALE FROM 7/4/22 WHILE STOCKS LAST. ALL ADVERTISED GOODS ARE EXPECTED TO BE AVAILABLE FOR THE DURATION OF THE PROMOTION, HOWEVER UNFORESEEN CIRCUMSTANCES MAY RESULT IN DELAY OR UNAVAILABILITY. CASH, TRADE ACCOUNT OR MAJOR CREDIT CARDS ONLY, UNLESS OTHERWISE STATED. ACCESSORIES SHOWN ARE NOT INCLUDED IN THE PRICE. ALL INFORMATION AND TIPS IN THIS CATALOGUE ARE OF GENERAL NATURE ONLY AND ARE NOT INTENDED TO BE A SUBSTITUTE FOR EXPERT ADVICE. SUNSHINE MITRE 10 DISCLAIMS ALL LIABILITY FOR ANY INJURY, DAMAGE OR ANY OTHER LIABILITY WHATSOEVER RESULTING FROM THE USE OF THE INFORMATION OR TIPS. SUNSHINE MITRE 10 ADVISES YOU TO CONTACT A QUALIFIED PERSON WHERE EXPERT SERVICES ARE REQUIRED. NOT AVAILABLE AT ALL SUNSHINE MITRE 10 STORES. SUNSHINE MITRE 10 RESERVES THE RIGHT TO CORRECT ANY PRINTING ERRORS. PROMOTION VALID 7/4/22 - 30/4/22. SUNSHINE HARDWARE PTY LTD ABN 95 129 140 083

College Pinnacle program taps in to students' passions

Writeup: Nambour State College Pinnacle Program

THE underpinning principle of Nambour State College's new Pinnacle Programs lies in identifying children's passions and interests and tailoring learning around them.

"The Pinnacle Program is fundamentally based on the Australian curriculum but we have taken our learning a step further by expanding the program to allow for our student's specific skills, talents and interests," said Junior Secondary Head of Department, Emma Cracken.

The original Pinnacle Program was always about academic excellence, infused with creativity. This year the program has expanded to include *Pinnacle Creatives*, *Pinnacle Innovators*, *Pinnacle Scholars* and *Pinnacle Athletes*.

"Our Pinnacle Program students have a specialist lesson once a week and are able to explore their particular area of interest," Ms Cracken said. "We are really excited about our Pinnacle Athletes' own Olympic Games, which are coming up."

At the moment, the Pinnacle Program is available to Year 7 students and will continue into years 8 and 9.

"Next year we are planning to introduce Pinnacle *Change Makers* and *Pinnacle Cultivators*," Ms Cracken explained. "*Change Makers* is focused on community improvement and leadership while *Cultivators* is about agriculture and hands-on team work".

Students who are interested in the Pinnacle Program are required to fill in an application and preference is given to students who have participated in the Young Pinnacle program.

"What I am looking for is a history of good behaviour and effort," Ms Cracken said. "Students do not have to be the highest performers, they just need to show an interest and willingness to give the program their best effort. It really is a wonderful opportunity, and a lot of fun as well."

• **Pinnacle Scholars:** "I chose Pinnacle Scholars because I really enjoy learning new things and pushing myself to become the best I can" - Amelia.

"Pinnacle Scholars is helping me with the first year of high school because we get to choose what we suit and head to our goals in life" - Luey.

• **Pinnacle Innovators:** "I chose Pinnacle Innovators because I'm interested in technology and science and Maths. This term we are programming a game to enter a competition with" - Jed.

"One of the best things about being in Pinnacle Innovators is because it's fun to make games and the teacher is very good with technology. The game our group built is based on a puzzle." - Levi.

"This class works better for me because I like I using computers more than book and using Scratch to make things" - Dylan.

• **Pinnacle Athletes:** "Pinnacle Athletes was my number one choice because I wanted to be able to do more things and focus on combining sport and academics" - Charli

"This term we've been creating an outdoor game, and next term we've been focussing on coaching which will help us focus on sports and get better at them for more enjoyment" - Charlie

"An example of us weaving sport into the learning would be a recent Science lesson on chromatography where we used the context



of drug testing at the Olympics (urine tests use chromatography to check for anabolic steroids). We developed our comprehension skills by using an article on drug testing that linked to our science experiment on chromatography.

- **Mrs Danielle Larsen, Science/Maths teacher**
• **Pinnacle Creatives:** "Our teachers bring creativity into our lessons by doing art, music, creative experiments and more diagrams in all our lessons" - Jayden

"The best bit about being in Pinnacle Creatives is combining art with the learning" - Stella.



Legacy Properties Queensland owners Tracie and Carl Thomas and daughter Sara.

Enjoy peace of mind knowing your property is in good hands

Business Writeup: Legacy Properties Qld

THIS business is appropriately named because Legacy Properties Queensland owners Tracie and Carl Thomas and their daughter Sara, believe that holding real estate is the way to build your financial legacy.

"Wealth is maintained in real estate when families own properties for generations," Carl explained.

"One generation's ceiling should be the next generation's floor. Every generation should not necessarily be on the hamster-wheel to own their own home.

"Ideally, property should be passed down and maintained through generations to really see the benefits, this is where we come in. We apply 100 percent of our effort towards maintaining your property and the tenancy relationship."

Rental specialists Tracie, Carl and Sara bought Maleny Property Rentals in December last year and are enjoying being in business together.

"Naturally we all have a similar work ethic and values," Tracie said. "And a good sense of humour, which can be really important at times!"

It's not surprising they get along. They devel-

oped their ability to work together while sailing and living aboard a 44ft yacht for five years.

"It was close living and the kids were home schooled, so there were daily challenges we had to overcome as a family," Tracie said.

Tracie has 15 years of experience in property management, Carl has 20 years in the top levels of management and operations for large international companies and Sara has over eight years experience in administration.

Needless to say, together they are well qualified and experienced to provide a high level of service in property management.

"We manage properties from granny flats to large, luxury properties and acreages," said Tracie. "One of the fundamental aspects of this industry is appropriately matching tenants to specific properties. I also make a point of establishing great relationships with both the property owners and the tenants because in my experience, this makes things smoother for everyone". Carl agreed, "We are landlords ourselves and we have also been tenants, so we understand the perspectives of both which really helps us be good managers."

► Legacy Properties Qld is located at 4/41 Maple Street Maleny. Phone 5499 9090.



Maleny Hospital
27 April to 18 May 2022

Call **13 20 50** or visit **breastscreen.qld.gov.au**





Celebrate Mother's Day at Flaxton Gardens with an indulgent High Tea experience.

Experience Mother's Day High Tea at Flaxton Gardens

Business Writeup: Flaxton Gardens

WHAT every Mum loves most is time with her favourite people. That's why Flaxton Gardens will be presenting the perfect Mother's Day morning High Tea or family lunchtime dining experience. This Mother's Day guests will be able to relax, enjoy beautiful food, and drink in the spectacular views.

"May is one of the most beautiful months in the Hinterland, and this is our most popular weekend of the year," said Restaurant Manager, Joe Van As.

With this in mind, the chefs at Flaxton Gardens have designed a menu that has something for everyone.

"You can start the morning with a Flaxton Luxury Tapas and Bollinger High Tea, or our Flaxton Famous Tapas High Tea with a Twist, at \$45pp," Joe said. "A different take on tradition

is our Queensland Tapas Style High Tea".

If you aren't a morning person, you can always opt for the set seasonal menu selection with 3 courses and receive a complimentary glass of house wine or house sparkling. This option is available from 1pm.

"I always recommend that guests try our utterly divine Flaxton Specialty Raspberry Souffle, baked fresh to order and topped with Vanilla Bean Ice Cream and Raspberry Coulis. Our regulars come from far and wide for this superb dessert," said Joe.

You can celebrate Mother's Day all weekend on the 7th and 8th of May 2022.

"If you really want to treat your Mum, I highly recommend booking in advance, to avoid disappointment," Joe said. "We look forward to celebrating with you all."

► Please email info@flaxtongardens.com.au for any enquires or bookings.

BreastScreen Qld back in Maleny

THE BreastScreen mobile service is back at Maleny Hospital from 27 April to 18 May 2022.

Local women 40 years and over are encouraged to book a potentially life-saving breast screen.

It is two years since COVID caused the first disruptions to all our lives, including the mobile breast screening service to Maleny being delayed until June in 2020.

Medical Director of BreastScreen Queensland Sunshine Coast, Dr Alison Roper, wants to reassure those women who had a breast screen in June 2020 that they will be invited to have their two-yearly breast screen when the bus arrives in Maleny at the end of April.

"While the recommended time between breast screens is two years, there is no problem in coming one or two months early," Dr Roper said.

"It is important not to delay having a breast



screen, as early detection increases treatment options and saves lives."

A breast screen can detect cancer early, before a woman or her doctor can feel anything, and regular breast screening is the most effective way to reduce deaths from breast cancer.

Women aged 50-74 years are particularly encouraged to have a free breast screen every two years. Women aged 40-49 and those over 75 can also attend this free Service.

► Call 13 20 50 or book online at breast-screen.qld.gov.au.

Get ready to GO

The garden organics bin collection service is expanding to households across the Sunshine Coast from July 2022. Place lawn clippings, weeds, leaves and other organic materials in your green-lidded bin. It will be collected by Council, diverted away from landfill and mulched ready to be reused. Mulching garden waste, instead of dumping it, will extend the landfill life and reduce greenhouse gases being released into the atmosphere. Together, we can get waste sorted for a cleaner, greener and sustainable Sunshine Coast.

Calling all high school graduates and uni students!

Are you looking to gain valuable skills, work experience and get paid? Apply for a Sunshine Coast Council traineeship before 24 April! Trainees are paid to learn on-the-job for 12 months and complete a certificate qualification. Sound good? Visit Council's website for more details and to apply.

Does your child like to draw?

Enter their native flora and fauna art for a chance to win a share of \$3000 in the Wild HeART Student Art Prize. Entries close 17 July. Head to Council's website for details.

CUSTOMER CONTACT

sunshinecoast.qld.gov.au/Council/Contact-Council

What's happening at Mooloolaba?

Works continue on the Northern Parkland along the foreshore, set to be unveiled in July. Council is now seeking community input on future stages of the Mooloolaba Foreshore Revitalisation. To have your say on elements of the new-look Mooloolaba Foreshore, visit Council's website before 29 April.

One for the calendar

Next Council Ordinary Meeting - Thursday 28 April at 9am

Does your community group need funding to help make something great?

Make it a reality with support from Council's Community Grants Program. Minor Grants of up to \$2000 are available for community groups to deliver projects, events and activities that provide community benefit. Visit Council's website to apply.

Check out the Heritage Symposium

If you've ever stepped inside an old building and wished the walls could talk, then don't miss this year's Heritage Symposium. The free event is on 29 April at the Landsborough School of Arts Hall. Keynote speakers will share their insight into some of SE Queensland's distinguished heritage homes and museums. Bookings essential - visit Council's heritage website.

Attention all budding high school innovators

The Mayor's Telstra Innovation Awards are back again in 2022, with entries now open for Sunshine Coast high school students in Years 9 to 12. The awards support students to develop business ideas that use innovation or technology in a new way to solve a community, environmental or business challenge. Students will also connect with industry mentors. Applications close 27 April. Visit studysunshinecoast.com.au/innovationawards for more details and to apply.

07 5475 7272
mail@sunshinecoast.qld.gov.au



www.sunshinecoast.qld.gov.au

PUBLIC NOTICE

Community Wild Dog Baiting Program Autumn 2022

Sunshine Coast Council in partnership with Biosecurity Queensland is supporting a community-based coordinated Wild Dog Baiting Program. Failure to control wild dogs can result in livestock losses, attacks on domestic pets and the loss of native fauna. Landholders have a legislative responsibility to control declared pests on their land and participation in this program is an effective way to help meet this responsibility. The Wild Dog Baiting Program will be held throughout

Bald Knob, Beerburrum, Belli Park, Cambronn, Conondale, Coochin Creek, Crohamhurst, Curramore, Elaman Creek, Gheerulla, Kenilworth, Kidaman Creek, Obi Obi, Peachester, Reesville, Witta and Wootha areas from 19 Apr-20 May, 2022.

For more information please contact:

Sunshine Coast Council

T 07 5475 7272

E mail@sunshinecoast.qld.gov.au

Beautifully renovated Queenslander

AGENT'S CHOICE: 31 Blackall Terrace, Nambour

THIS recently renovated Queenslander offers a distinct style and privacy.

"A sense of peace and tranquillity washes over you the moment you enter this incredible home, styled with the utmost care in mind to maintain its beautiful features," said marketing agent Melanie Davidson.

"With high 12-foot ceilings and stunning feature lighting, the mostly white interior coupled with the polished dark timber floorboards creates a winning combination.

"As you stroll through the front entrance you are greeted with the large open plan living, dining and modern kitchen featuring matt black tapware and island bench."

The home has 3 generous bedrooms, the main bedroom located at the back of the home has direct access to the back deck via French doors.

With access to the spacious, covered deck at the back of the home via either kitchen or primary bedroom, combined with spectacular views of the mountain ranges in the background, the home is an entertainer's delight.

"Watch the children play in the pool while you enjoy drinks on the deck or from one of the several artfully dotted areas of the landscaped garden," said Melanie.

A storage area plus laundry and second bathroom are located under the house allowing for



This pristine home is located just a short stroll for the Nambour CBD and Nambour Plaza.



a hot shower once you are finished in the pool or working in the garden. "Thereby eliminating wet footprints and towels from making their way to the main level."

This pristine home is located just a short

stroll for the Nambour CBD and Nambour Plaza housing specialty shops and cafes.

► To arrange an inspection contact Melanie Davidson on 0400 251 322 or Toby Morrin on 0401 623 801.

Stunning home on Balmoral Ridge

AGENT'S CHOICE:

470 Maleny Montville Road, Balmoral Ridge

A stunning 8 acres awaits the new owners at this Maleny-Montville Road property. Offering complete privacy with incredible views to the Sunshine Coast, Baroon Pocket Dam, Western Avenue Montville to the North, and Maleny and Witta to the South and West, this family home offers the ultimate in lifestyle and entertaining.

With attention to detail throughout the home including Italian tapware, imported English light fittings, Turkish travertine tiles, recycled hardwood timber from Western Queensland and Glasshouse Mountain rock forming the facade of the home, there is so much to fall in love with at this very special property.

Create an enviable family home for your new life in the Hinterland or the ultimate weekend retreat from the hustle and bustle of the city



and your work. With such formidable views on offer, the feeling of space and tranquillity is truly unique.

This is a truly generational home that has been crafted to exceed regulations and built

to master craftsman standards and a private inspection is an absolute must.

► Contact Rodney Millett of Maleny & Hinterland Real Estate on 0477 702 073 to find out more about this stunning property.

From left Clarke Alexander, who referred his friend to Blackall Range Real Estate, Mark Henderson, Margy Henderson and Lions Club President Helen Johnston who is gratefully receiving the cheque.



Could your favourite charity use \$5000?

A Range real estate agency is donating \$5000 of its commission to the club or charity of choice of anyone who sells through them or refers a property to them.

The first recipients of Blackall Range Real Estate's \$5000 'Community Contribution Fund' was The Lions Club of Maleny - Blackall Range, after the Club's long serving member, Clarke Alexander, referred his friend Jo to the agency.

"After meeting with us, Jo decided to list her Mapleton property with us, which we then sold at \$60,000 over the asking price," said Principal Licensee Mark Henderson.

"We just want to give back because we live in such a wonderful community. We're not in this

business for the money alone and this was a chance to do something for our community at a time when the prices are strong.

"If I was 30 years younger I might not be so generous but nowadays we're quite happy to give back.

"It comes on top of our lowest commission guarantee. It's a win-win situation for us and for the person who buys or refers."

Mark said initiatives like this were the reason Blackall Range Real Estate was the fastest growing local agency in 2021.

► For further information please call Mark on 5499 9966 or 0414 899 933.

West Woombye wonder

AGENT'S CHOICE:

30 Mullers Road, West Woombye

IN the quiet back blocks of Woombye sits this six-bedroom home on 2021m² of rural residential land. A strong sturdy brick home, the property has two levels of living.

On the first floor there are four large bedrooms with built-in cupboards and polished floors, a large bathroom with a shower over the bath, a separate toilet, large kitchen, very large lounge and dining areas with polished floors and a separate laundry beside the kitchen.

Off the kitchen is a large L-shaped verandah with covered outside stairs. On the ground floor are two large bedrooms in a self-contained granny flat, a kitchen and bathroom with a shower and toilet.

Access to upstairs is through an internal staircase but this can also be locked off separately for dual living. This area is perfect for a teenager or grandparents' retreat.

A large double lockup garage, a separate



double carport and a garden shed compliment this already big house.

You will save on water and electricity with a 50,000-litre water tank and solar hot water.

There is a school bus to the gate and you are only a short drive to the Woombye Shopping precinct, Woombye Train Station, Woombye State School and Nambour Christian College.

Less than 10 minutes by car is Nambour CBD and the village of Palmwoods.

West Woombye has all the charm of a rural setting, however you are only 20 minutes to the beautiful beaches of the Sunshine Coast, the stunning hinterland and the Sunshine Coast Airport.

► For the investor, the expected rental return is \$700 pw. Contact Peter Wrigley of Carolans First National Real Estate on 0407 374 349 to learn more.

Five smart-money techniques for financial success

by **Matt Wall** BOQ Nambour & Hinterland Owner-Manager



To help make sure you're set up for financial success, BOQ Nambour & Hinterland has pulled together our top 5 Smart Money Techniques:

1. Make a budget:

The goal here is to make sure you're not spending more than you earn! Be sure to include lines for essentials like rent, bills, food and savings, as well as a line for general fun/hobbies/vacations, so you can still treat yourself!

2. Set up automatic transfers for bills:

Being late or missing a payment can negatively affect your credit score, which can make it difficult to obtain financing in the future - such as when you're ready to buy a home! Setting up automatic bill payments or transfers takes the burden off you, and guarantees you'll always be on time.

3. Put aside money for a 'rainy day':

Whether it's a job loss, an unexpected accident, or unfortunate event, a downturn can happen to anyone, which is why it's important to have a "rainy day" fund as a backup. Putting this money in a high interest savings account will also ensure your money continues to grow!

4. Consolidate your debts:

Consolidating involves rolling all your existing debts into the one loan, which may make it easier for you to meet and keep up with repayments.

5. Set financial goals:

Whether it's saving for a new car, a holiday or your first home, having an end goal in mind will help keep you motivated and encourage you to save/spend your money wisely.

► To chat about your property goals and how BOQ Nambour & Hinterland can help, pop in branch or give us a call on (07) 3000 1688 today! This article is for general information purposes only and is not intended as professional advice.



MALENY & HINTERLAND REAL ESTATE

SALES | PROPERTY MANAGEMENT | COMMERCIAL



WELCOME TO THE MARKET

470 Maleny Montville Road, **Balmoral Ridge**

A stunning 8 acres awaits the new owners at this Maleny Montville Road property. Offering complete privacy with incredible views to the Sunshine Coast, Baroon Pocket Dam, Western Avenue Montville to the North, and Maleny and Witta to the South and West, this family home offers the ultimate in lifestyle and entertaining. With attention to detail in every element throughout the home; Italian tapware, imported English light fittings, Turkish travertine tiles, recycled hardwood timber from Western Queensland and Glasshouse Mountain rock forming the facade of the home, there

is so much to fall in love with at this very special property. Create an enviable family home for your new life in the Hinterland or the ultimate weekend retreat from the hustle and bustle of the city and your work. With such formidable views on offer, the feeling of space and tranquillity is truly unique. This is a truly generational home that has been crafted to exceed regulations and built to master craftsman standards and a private inspection is an absolute must.

5 4 7

For Sale Expressions of Interest
Inspect By Appointment Only
Rodney Millett
0477 702 073
rodney@malenyrealestate.com



UNDER OFFER

324 Curramore Road, **Curramore**

This beautiful colonial home is the perfect Sunshine Coast Hinterland property. The perfect size home, featuring elegant craftsmanship, north easterly aspect, classic finishes, stunning views over the Obi Valley, 4 useable acres with a huge shed and still the potential for dual accommodation! This home has been built with a craftsman's eye, with New Guinea Rosewood cabinetry in the

kitchen, three fireplaces, recycled hardwood timber bar, luxurious Axminster carpet, classic Dado walls and 9ft ceilings with ducted air for family comfort. This home will last for generations. This home and property is a must inspect for those looking for the idyllic Hinterland home and property.

4 2 6

For Sale Contact Agent
Inspect By Appointment Only
Rodney Millett
0477 702 073
rodney@malenyrealestate.com



WELCOME TO THE MARKET

Unit 3/7 Morven Place, **Maleny**

Just minutes from the bustling main street of Maleny is this 2-bedroom unit in a very quiet complex of just 3. Well maintained and light and bright, there are lovely views over Maleny to be enjoyed from the front of the property. Open plan in its design, there is plenty of room to entertain inside or out; with two generous outdoor spaces on offer. Investors, downsizers and first home buyers alike will appreciate everything on offer at this attractive property. Neutral in its design, there is so much scope here to add your personal touch and delight in everything the Hinterland has to offer.

2 1 1

For Sale \$525,000
Inspect By Appointment Only
Rodney Millett
0477 702 073
rodney@malenyrealestate.com



WELCOME YOUR NEW NEIGHBOURS

270 Reesville Road, **Reesville**

Nestled in Reesville, just a 7-minute drive from the vibrant main street of Maleny, sits this 3-bedroom low set home on the perfect acre. There are endless opportunities for this property; live in the home or start your dream build taking in the valley views while making the use of the existing dwelling. Astute buyers will then have the opportunity to tenant the home or accommodate family or friends. The acre is a combination of flat land with a gentle slope away to the valley and its views. The perfect new home site is just waiting to take in these very pretty views.

3 1 2

SOLD
By Principal
Rodney Millett
0477 702 073
rodney@malenyrealestate.com

5494 3022

malenyrealestate.com

Maleny & Hinterland Real Estate

mhrealestateandmapletonrealty

PROUDLY A FAMILY OWNED AND OPERATED AGENCY IN THE HEART OF MALENY

Live Local

Real Estate



RE/MAX sells Nambour's second \$1million-plus home

RE/MAX Property Sales agent Richard Krausz has sold only the second million dollar-plus home in Nambour.

The home at 63 Lachlan Avenue offers north-easterly views including ocean glimpses from its elevated position. The custom-designed, quality-built contemporary residence on a half-acre landscaped block, high in the hills of Nambour Heights is within walking distance to local schools and shops.

Nambour's first home to fetch a million dollars was sold by RE/MAX Property Sales owner Tristan Brown last year.

"Richard's million dollar sale is the icing on the cake for us recently," said Tristan. "We are also proud to announce that the last five highest priced residential sales in Nambour have been

sold by RE/MAX Property Sales. That means the only homes to sell over \$900,000 or above in Nambour, have been sold by our office."

► Call Re/Max Property Sales on 5470 7000.



Heritage Heights perfection in Burnside

AGENT'S CHOICE:
63 Robertson Drive, Burnside

FROM the moment you pull up, this property set on 800m2 and located in Burnside's Heritage Heights Estate will capture your attention.

"The gardens are vibrant and full of life and the house is spotless," said marketing agent Jason Stock.

"Entering through the double front doors, natural light streams into the spacious living areas, bouncing off the tile floors and illuminating the space.

"The large kitchen overlooks the living areas and also across the family room, through the bay window and out to the colourful yard.

"It features a waist high wall oven for ease of use, a ceramic cooktop with canopy rangehood, a dishwasher, a large pantry, loads of bench space and a long breakfast bar for

enjoying mealtime fun."

There are 3 different living areas; family room, dining and lounge area all in the one spacious, open plan zone with direct access to the rear 7m long patio.

The large 3.9m x 3.6m master bedroom is set to the rear of the home, ideal for peace and privacy and features a walk-through robe and ensuite.

Bedrooms 2, 3 and 4 all feature ceiling fans and built-in robes.

There is a large second bathroom for the family, including a bath and a separate second toilet.

For all-year-round comfort, the home features new ceiling fans to all rooms as well as ducted heating & cooling.

► To learn more about this stunning property contact Jason Stock of RE/MAX Nambour on 0499 562 675.

A picture worth a million dollars!

Richard Krausz and Megan Manly achieve second highest residential sale in Nambour at \$1.068m



Nambour's real estate dream team has set the benchmark once again; achieving the suburbs **second highest residential sale** at 63 Lachlan Avenue. Recently awarded **Agent of the Year 2022** in Nambour and Coes Creek, this sale the perfect way to celebrate Richard and Megan's continued success as they embark on their second year of selling together in Nambour and surrounds.

Leading with the intention to be Nambour's most vibrant real estate team; Team Krausz deliver a selling experience that is guaranteed to exceed every Sunshine Coast property owners expectations...and here we have the results to prove it.

Thinking of selling? Contact Team Krausz on **0422 997 810**.

RE/MAX Property Sales

Scan the QR code to connect with Team Krausz



Richard Krausz 0422 997 810



Introducing Alex!

Licensed Real Estate Agent, Team Steve G Pery

RE/MAX Property Sales are thrilled to welcome **Alex Ollier** to our ever-growing team of outstanding real estate sales professionals here on the Sunshine Coast.

Alex will be working alongside one of our top selling agents, Steve G Pery; liaising with buyers and sellers in a collaborative, transparent, and friendly manner to secure the optimum outcome and facilitate as smooth a process as possible.

Thinking of selling? Contact **Alex** on **0458 782 922** to schedule an appraisal on your property today.

RE/MAX Property Sales

Scan the QR code to connect with our team.



Alex Ollier 0458 782 922

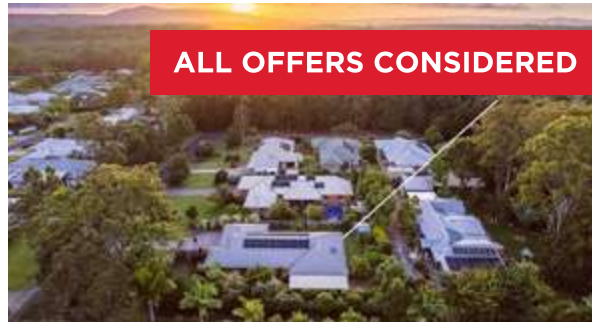
RE/MAX lists and sells more properties than any other agency in Nambour and surrounds!

Each office independently owned and operated.



OFFERS OVER \$619K

4 Olive Court, Nambour
3 Bed 1 Bath 1 Car | 703m2
Jason Stock 0499 562 675



ALL OFFERS CONSIDERED

30 Read Street, Tewantin
4 Bed 2 Bath 2 Car | 727m2
Nathan Beasley 0427 612 550



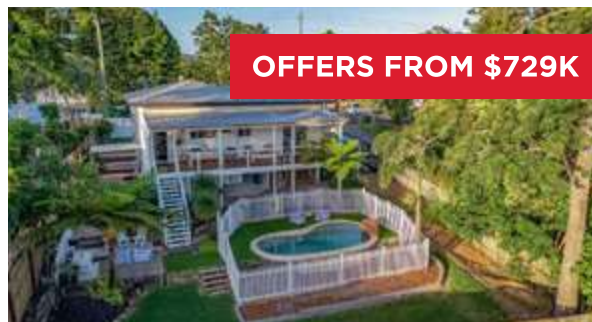
OFFERS OVER \$749K

63 Robertson Drive, Burnside
4 Bed 2 Bath 2 Car | 800m2
Jason Stock 0499 562 675



OFFERS ABOVE \$689K

2/3 Betsy Way, Nambour
3 Bed 2 Bath 2 Car
Richard Krausz 0422 997 810
Nicky Coetsee 0401 358 484



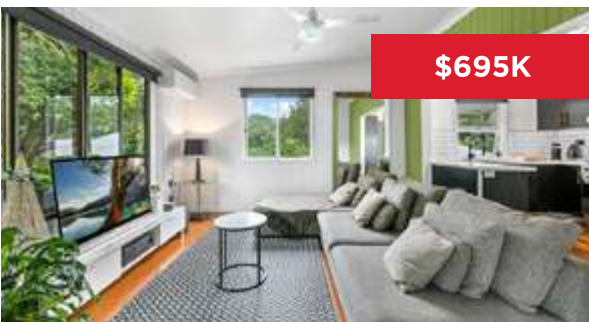
OFFERS FROM \$729K

31 Blackall Terrace, Nambour
3 Bed 2 Bath 2 Car | 663m2
Melanie Davidson 0400 251 322
Toby Morrin 0401 623 801



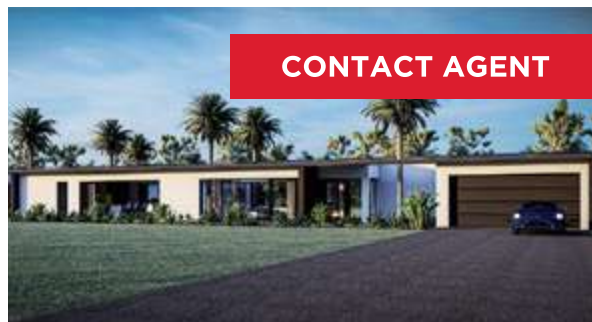
OFFERS FROM \$380K

4/6A Low Street, Yandina
2 Bed 1 Bath 1 Car
Melanie Davidson 0400 251 322
Toby Morrin 0401 623 801



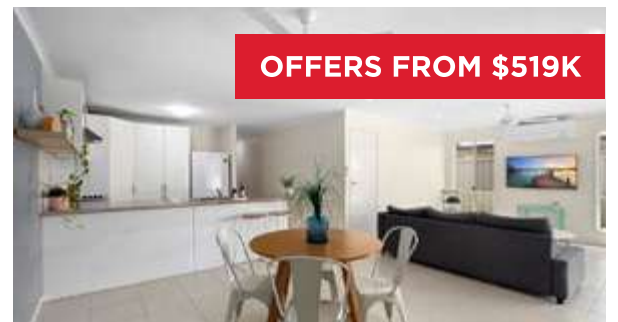
\$695K

10 Hocking Street, Nambour
3 Bed 1 Bath 1 Car | 610m2
Richard Krausz 0422 997 810
Megan Manly 0421 040 807



CONTACT AGENT

83 Edington Road, Cooroibah
6 Bed 3 Bath 2 Car | 5076m2
Nathan Beasley 0427 612 550



OFFERS FROM \$519K

10/16 Stevens Street, Yandina
2 Bed 1 Bath 1 Car | 127m2
Melanie Davidson 0400 251 322
Toby Morrin 0401 623 801



SOLD \$1,068,000

63 Lachlan Avenue, Nambour
4 Bed 3 Bath 4 Car | 2146m2
Richard Krausz 0422 997 810
Megan Manly 0421 040 807



RECORD SALE PRICE

15 Karnu Drive, Ninderry
4 Bed 3 Bath 10 Car | 5000m2
Richard Krausz 0422 997 810
Megan Manly 0421 040 807



SOLD \$663,000

21 Nimbus Drive, Flaxton
3 Bed 1 Bath 1 Car | 809m2
Steve G Pery 0448 884 093
Jai Barber 0492 855 196

 **RE/MAX Property Sales & Rentals**

Scan the QR code to find out what the Nambour community has to say about RE/MAX



Look Local Trades & Professional Services

Professional Services

innov8
ACCOUNTING & ADVISORY

Accounting
Business Advisory Services
Tax Return Preparation
Company, Trust, Partnership, Individual
Self-managed Super Funds

5442 1234
info@innovateaa.com.au
www.innovateaa.com.au

4 Pinegrove Rd
Woombye

Auto Services

AUTOELECTRICS QLD
& Mechanical

Air Conditioning
Mechanical Repairs
Auto Electrics
Log Book Servicing

227 Nambour Connection Rd, Woombye
autoelectricssld.com.au
5442 2278

Home

Servicing The Sunshine Coast For Over 30 Years

INDEPENDENT
BLINDS & AWNINGS

0411 872 060

Ziptrak & Zipscreen • Blinds & Awnings
Clear PVC Blinds • Plantation Shutters
Security Doors & Screens

Call us today for a free measure and quote!

www.independentblindsandawnings.com.au
QBCC No. 1096933

Landscaping Services

WOODCHIP / FOREST MULCH
\$22 per cubic metre + GST
(8 cubic metres minimum delivery)

54 459921 or 0412 586 131

We also provide complete tree services including pruning, removals & consultancy



Cleaning/Pest Control

Sutton's
CLEANING SERVICE

- SEPTIC SYSTEM
- TREATMENT PLANTS
- GREASE TRAPS
- HYDRO EXCAVATION
- LIQUID WASTE
- COMMERCIAL & DOMESTIC

Locally Owned & Operated Since 1980

5447 6477
www.suttonscleaning.com.au

CONCRETING & LANDSCAPING
ALL AREAS

- Footpaths • Driveways • Slabs
- Stencil • Stamped
- Exposed Aggregate • Plain • Bobcat
- Excavator & Truck
- Quality work at affordable rates
- Free Quotes & Free Advice Anytime
- Credit Cards

Ph Guy 0416 202 044
www.concretecontrol.com.au
QBCC Lic no. 1129605

LOCALLY GROWN TURF
FAMILY OWNED AND OPERATED



- Low Maintenance
- Hard Wearing
- Shade Hardy
- Wintergreen Couch
- Native Zoysia Nara
- Drought & Salt Resistant
- Suits all Budgets
- Soft Leaf
- Buffalo Sapphire

Pickup or Delivered • Preparation & Installation

P 07 5445 9251 M 0488 409 502
447 Chevallum Rd, Chevallum | twistbrothersturf.com.au

Hinterland
ACCOUNTANTS + ADVISORS

Supporting local business with

- Accounting and Tax
- BAS and GST
- Financial Statements
- SMSF and Superannuation
- Planning and Business Structuring
- Business Purchase and Sale

1/13 Turner St, Beerwah
5439 0188 | admin@hintertax.com.au

Electrician

ACW Electrical Pty Ltd
Lic. No. 78020

Small Job Specialist

Quality Workmanship on Domestic Installations & Repairs

40 Years Experience

M: 04 27 170235

- TREES & STUMPS REMOVED
- HOUSE & SHED SITES
- UNDERGROWTH & LANTANA CLEARED
- FARM ROADS
- HORSE ARENAS
- AND MUCH MORE!
- STEEP SLOPES OK



JOHN : 0455 916 231

Auto Services

CARAVANS
WE BUY,
SELL
AND
CONSIGN



P: 0408 758 688

RANGE CARPET CARE

Citrus or Hypoallergenic Detergents Available

Nambour > Hinterland Coast

- Same owner operator - SINCE 1987
- Environmentally safe & clean solution
- Commercial & residential
- Help reduce levels of dust mites

WARNING BROLLY
Dirty carpets are a health hazard
Fabric Protection
Ph 5445 7611

Plumber

WOOMBYE PLUMBING
30 Years Experience
RURAL PLUMBING SPECIALIST

- RAINWATER TANKS & INSTALLATION
- DRAINAGE
- MAINTENANCE
- EXCAVATOR HIRE

ADAM KITHER
0418 712 268
adam@kitherplumbing.com

24 Menary Rd, Woombye QLD 4559



Gas Services

GAS SERVICES QLD

NEED A NEW GAS CONNECTION

- Domestic • Commercial • Rural • Industrial
- Repair Work • Gas Emergencies
- Gas Plumbing • Cooktops • Hot Water
- Heating • Commercial Cooking Appliances
- Residential & Commercial • Gas Certificates

CALL DREW 0404 657 047
info@gasservicesqld.com.au
QBCC: 15247354
www.gasservicesqld.com.au

Roofing

RE-GUTTER?
DOES YOUR HOUSE NEED GUTTERS REPLACED?

LOW SET AND HIGH SET
FREE QUOTES

PHONE 0417 721 630

JOBS UNDER \$3300

WE ARE BACK!
Noosa Eumundi Auto Wreckers

17 Whalley Creek Close, Burnside

Call Ivan 5442 8866

STILL WANTED:
F Trucks and other cars
Ring for parts requirements
Open Mon to Fri 9am-1pm



Water Services

HW WS SEPTIC PUMP OUTS
Hinterland Waste Water Services
Peter
0428 723 082
 hwws@bigpond.com

HPS
Hinterland Pump Services
 Glasshouse to Gympie
 Murray
0416 256 536

GD WATER BORES
OBLIGATION FREE SITE INSPECTIONS FOR ALL SUNSHINE COAST RESIDENTS
 Call **1300 0 DRILL**
 E water@geodrillaustralia.com.au
www.gdwaterbores.com.au

Health & Wellbeing

HATHA YOGA/ PILATES RELAXATION
 Woombye Hall: Sat 9am & Wed 9.30am.
 Beginners & Seniors welcome. Cost \$10.
 Christine: 5441 6285 (Cert. in Pilates matwork;
 Dip. IYTA: Yoga Instructor; USC Sport &
 Exercise minor: Ex. Prescrip. for Health &
 Rehab.)

Maleny Golf Club
Tuesday 29th March, 2022: Mixed Stableford 1st Jimmy Clegg with 42 points, runner-up Shaun Moore 37 points and third Larry Fraley 34 points on a count-back from Douglas Rose, also with 34 points. A Great Score (Hole in One) was achieved by Douglas Rose. Nearest to the Pin went to Shaun Moore on the seventeenth hole and Larry Fraley on the eighth hole.
Saturday 2nd April, 2022: Mixed Stableford. 1st Matthew Wolski with 40 points on a count-back from Brock Crowther and Paul Dean. Runner-up Doug Johnstone 39 points, on a count-back from Geoff Smith and third Paul Griffin 37 points on a count-back from Eric Hecht and David Killeen. Nearest to the Pins went to Grant Flynn on the fifth, Ian McCracken on the twelfth, Paul Griffin on the fourteenth and Rhorgan O'Connor on the seventeenth.
 ▶ Please phone our Clubhouse on 5499 9960 or go to our website on www.malenygolfclub.com.au and book yourselves in for a great game of golf.

Whingeing article

WITH regards your latest *Gazette* front page article on vaccine mandates for the Show. This whingeing article is coming from an anti-vaxer's point of view. If we have over 90 percent vaccinated in the state then it goes to stand that only less than 10 percent of people could not go or participate. Not the numbers quoted. As for manning the entry gates or whatever, it would take only take one person at each gate to check the QR code results of people entering. I have gone to many events since vax mandates were the norm and they only had one person at each entrance. I believe this is just another hoax written by another anti-vaxer to stir up trouble. I for one would only attend this gathering of people at the Show if I could be guaranteed that it was a safe venue. I think it is well known everywhere that Nambour has "alternative lifestyle people" however it is obvious that COVID is real and it will kill young and old if unvaccinated.
 — **Jim Forbes, Meridan Plains**

Highlighting inconsistencies

THANK you for highlighting the inconsistencies in the State Govt vaccine mandates in your front page story last edition. Clearly we can safely attend a country show, just as we safely attend sporting events. And enjoying a meal in a cafe with our family is as safe as buying groceries in a supermarket. Our state representatives have done nothing but enable a climate of fear and overreach where 'safety' from one virus has become the only value that matters. Will our local representatives and mayor stand up to save our local industries and communities?
 — **Lynn Preece, Mudjimba**

Hunting for wild strawberries

THE delicious strawberry is not native to Australia. It was introduced soon after European settlement. Unlike North Eastern USA and South East

Letters to the Editor
 Do you have an opinion to share? A range of viewpoints leads to better debate and better outcomes. Submit your Letter to the Editor with your name and suburb to: editor@sunshinevalleygazette.com.au. Please understand there is a strict 300-words limit.



Canada where wild populations are abundant feral populations of strawberry are rarely found in Australia. I have seen some in Olinda in the Dandenong Ranges, Victoria, where I have also seen a very similar species *Fragaria indica* ('Fi') which has yellow flowers, contrasting with the usual white flowers of strawberry. 'Fi' is historically interesting and was likely introduced with Chinese medicine. In Queensland I have seen the yellow flowered plants in the 'Lost World', but many years ago. While there are about 20 reports of 'Fi' in Queensland, when we have looked at the locations recorded, they are now covered by roads, shops, houses or dense grass. Fortunately, we recently found a small population of 'Fi' in 'Petrie Park' in Nambour (see photo), but we would very much like to view and record other populations in the wild, especially in South East Queensland. Please let us know the locations of any wild strawberry plants (yellow or white flowered) you may know of – please email grevilleagarden@yahoo.com.au.
 — **Mark Herrington, Townen Mountain**



Stop the chop

HOW can our national icon, the Koala, be endangered in 2022? The answer is that current legislation has repeatedly failed to adequately protect our environment, our forests and its vulnerable wildlife. For over 20 years these laws have continued to allow Koala habitat to be destroyed. We are outraged that "Ferry Forest", 129 hectares of documented core Koala habitat on the Sunshine Coast, is to be logged by the Department of Agriculture and Fisheries (DAF). This is unacceptable especially since the forest is to legally transition to a conservation estate in 2024. Despite the Koala recently becoming an endangered species and the fact that "Ferry Forest" habitat supports 53 vulnerable species there is continued pressure to supply hardwood logs to sawmills. This logging pressure is a direct result of the Queensland State Governments' historical failure to establish a viable, renewable, native hardwood plantation. The trees intended to be logged must be retained and allowed to grow and mature. They currently provide essential roosting, breeding and foraging sites for wildlife. Their ability to develop hollows over time is especially important for the future survival of our hollow-dependent wildlife such as the Greater Glider and Glossy Black Cockatoo. As the Sunshine Coast continues to expand its urban footprint we lose more of our native forest and wildlife. For the benefit of future generations in our growing community, we must continue to fight to protect the environmental, cultural, recreational and tourism values of "Ferry Forest". Help save Koala habitat. Join the Fridays for Ferry Forest "STOP THE CHOP" campaign on Steve Irwin Way and like our "Save Ferry Forest" Facebook page.
 — **Teena Chumbley, Landsborough**

Moment in Time
 The AE2 submarine.

The Son of Rosemount farmers who served on WWI submarine

FEW people know that Australia had two submarines in WWI, much less that a member of a local pioneering Bli Bli family was one of the crew. Alexander Charles Nichols, the son of Rosemount farmers, was born at Petrie's Creek (Nambour) in 1893. He attended Nambour State School (then situated on the site of Nambour Museum). On the 12 December 1912 at the age of 19, he joined the Royal Australian Navy. He was the only Queenslanders who sailed on the AE2, one of Australia's two World War I submarines. Alexander's diary details his harrowing experiences throughout the war - surviving the sinking of AE2 in the Dardanelles, capture, forced labour, prisoner of war camps, an escape attempt in 1916, malaria, dysentery, fever and starvation. He was released from the San Stefano prison camp in October 1918 and eventually reached London where he spent several months recuperating before returning home to Queensland. Nichols left the navy in 1920, but re-joined in 1939 as a petty officer with the Royal Australian Fleet Reserve (Australian Navy), spending the war years around the Pacific Islands and New Guinea deactivating enemy mines. He was in Darwin during the Japanese air raids and completed his years of service on 21 August 1945. He was one of the longest-surviving AE2 men, despite having almost died as a POW in Turkey. He died in 1971 at Woody Point, Queensland.



Alexander Charles Nichols.



Nature Watch
Paleheaded Rosella stumped for choice

"WE have a pair of these beautiful Paleheaded Rosellas regularly visit our watering stations," says avid Nature Watch contributor Don McGlusky of Diddillibah. "This photo was taken some years ago in a paddock at Beerburum. It contained many old trees and stumps ideal for birds which nest in tree hollows. Sadly a bulldozer changed that so another habitat lost. "These birds are very shy so I set my camera and flashes in position and then sat in my car about 50 meters away. When a bird landed I triggered the set-up using an infrared triggering device. "As it was a good season this pair had six chicks which is unusual as about three is a normal brood. Being seed eaters they regurgitate a partly digested milky substance to their chicks."

Crossword See solution next page

| | | | | | | |
|----|----|----|----|----|----|----|
| 1 | 2 | 3 | 4 | 5 | 6 | 7 |
| | | | 8 | 9 | | |
| 10 | 11 | | | 12 | | |
| | 13 | | | | | |
| 14 | | | | 15 | | 16 |
| | 17 | 18 | | 19 | 20 | 21 |
| 22 | 23 | | 24 | 25 | 26 | |
| 27 | | 28 | 29 | | | |
| | 30 | | 31 | | 32 | 33 |
| | | 34 | | | 35 | |
| 36 | | | | | 37 | |
| | | 38 | | | | |
| 39 | | | | 40 | | |

ACROSS
 1 Remember
 5 Embellish
 8 Over
 10 New wine
 12 Manservants
 13 Ready to run any risk
 14 Dry, of champagne
 15 Light beer
 17 Reposes
 20 Utters wildly
 22 Copied
 24 Sorrowful
 26 Examine
 27 Inn
 29 Man's name
 30 Replenish
 32 Make brown
 34 Sullied
 36 Adulterate
 37 Dutch cheese
 38 Time in grammar
 39 Burnt remains
 40 Spruce

DOWN
 2 Ooze out
 3 Insects
 4 Mourns
 5 Incarnation of a god
 6 Representative
 7 Withdraws
 9 Egg-shaped
 11 Hide away
 14 Former Iranian leader
 16 Turned outwards
 18 Without teeth
 19 Undermine
 21 Stupefy
 23 Carriers
 25 Mocked
 28 Letting contracts
 31 Bird
 33 Proverb
 35 Assist

Nambour events bring the crowds

David Law
Division 10 Councillor
david.law@sunshinecoast.qld.gov.au



IT is great to see so many events happening in Nambour already this year. Council recently teamed up with Peace Run Records and ran a great night for Nambour Live! celebrating Harmony Week that many enjoyed. Congratulations to the Nambour Tram team on hosting their first Suitcase Rummage. It is great to see the community both being a part of and supporting the event.

The 2022 Nambour Expo had attendees covered on outdoor adventures, with more than 130 local and national brands. To find more events happening across the region, visit Council's event website.

Gen Z survey

Sunshine Coast Youth Council has launched a short survey designed to tap into the minds of young people. Sunshine Coast residents aged 12-24 can complete the Youth Council's survey for their chance to win one of five, \$50 vouchers.

Young people are an important part of our community and represent the future of the Sunshine Coast. We want people to thrive here on the Sunshine Coast and are keen to find out what young people love, what could be improved and their ideas for the future.

With the information collected from the survey, the Youth Council will have a clearer picture as to how they can advocate and take action to make a positive difference for young people. Visit council's website to complete the survey, which closes 11 May.

Minor Grants for community groups

Applications for Council's latest round of Minor Grants are now open. Not-for-profit groups are encouraged to apply.

These organisations can apply for up to \$2000 to deliver one-off projects, events and activities that provide community benefit.

Minor Grant applications can be submitted in one of the following six categories: Community Development, Community Facilities, Creative Development, Cultural Heritage, Economic Development or Sport and Recreation. Visit Council's website for more information and to start your application. Applications close May 3.

\$1.6 billion for Rail for CAMCOS

Ted O'Brien
Federal Member for Fairfax
ted.obrien.mp@aph.gov.au



AFTER years of leading a campaign to build a new heavy passenger rail line along the CAMCOS corridor between Beerwah and the Maroochy CBD, we secured \$1.6 billion in Government funding in the recent Federal Budget. Consistent with the normal 50/50 funding split between the State and Federal Governments, that makes the total project cost estimated at \$3.2 billion.

As the single largest transport infrastructure investment in the Budget, it'll be the most transformational project we'll see for generations. The project will deliver a new 37km line, starting at Beerwah and passing through Caloundra and Kawana before reaching the Maroochy CBD.

Budget Delivers

While our rail commitment is a huge investment in our region's future, the Budget also offers immediate support for Sunshine Coast residents by introducing a cost of living package to take the pressure off the household budget, including a price reduction for fuel of 22 cents per litre.

Turbine Precinct

A world-first food and beverage manufacturing and education precinct is set to be built on the Sunshine Coast with \$33.4 million in Federal funding. The Turbine Precinct will be a mega 20,000 m2 purpose-built facility located at the Sunshine Coast Airport. Significantly, local start-ups will have access to the equipment and resources required to go to market and the advanced infrastructure and networks will help them scale to meet demand from global markets.

SEQ City Deal

Three tiers of government recently signed the Southeast Queensland City Deal, which will create a collaborative mechanism to deliver transformative projects in the region. As part of the deal, the Coast will have the opportunity to share in \$435.8 million through two newly created funds and will receive a \$35.3 million boost to Council's Blue Heart Environmental initiative.

Early Streetscape work completed

Winston Johnston
Division 5 Councillor
Division5@sunshinecoast.qld.gov.au



EARLY streetscape works have been completed along Blackall Street as part of Council's Streetscape Capital Works Program.

Since November 2020, Council has undertaken community engagement, which has informed the new streetscape design.

As part of the early-works, additional car parking on Hill St, Blackall St and Keil St has been constructed.

The works have been split across two phases to minimise impacts on the traders and visitors to Woombye.

The next stage of works will start mid-2022 on the streetscape and landscape improvement works. Watch this space!

Dob in a pothole

During the severe weather events our roads held up well, however some areas across Division 5 have been significantly impacted, due to the downpours.

I encourage the community's assistance in locating any damaged roads and potholes that have emerged during the recent deluge.

The quicker our team knows about the job, the quicker it's actioned and filled. Visit council's website at www.sunshinecoast.qld.gov.au to let us know if there's a pothole near you.

Flood Relief Funding Opportunities

If you've been affected by the recent floods and severe weather, there are a variety of funding opportunities to assist with flood and disaster relief.

Visit my Facebook page for a list of available funding grants you can apply for.

Or you can visit council's webpage for a list of any disaster recovery activities, financial support, resources to help you and where to donate.

Thank you to everyone in our community who is playing their part in keeping our neighbours safe and connected in tough times.

Keeping you connected

Please do keep an eye on my Facebook page for the latest Division 5 news and information. Visit www.facebook.com/winstonjohnstondivision5sc

Narrows Escape wins top gong!

Andrew Powell
State Member for Glass House
glass.house@parliament.qld.gov.au



THE incredible Xochi and Ali from Narrows Escape Rainforest Retreat at Montville took out the top gong for Hosted Accommodation at the Australian Tourism Awards on 18 March. No one from the Hinterland, nor anyone who has spent time at Narrows, will be surprised. These two are simply amazing and their accommodation world-class. Huge congratulations!

Maleny State Emergency Team win a Local Heroes Grant

I joined the Maleny State Emergency Service team at a recent Thursday night training bearing gifts! The Maleny SES are using one of my Local Heroes Grants to purchase PPE lockers for the new station! Thanks for everything you've been doing lately. True local heroes!

Dark Sky Alliance seeks to improve Maleny's access to night skies

Whilst it's always exciting to hear what the Maleny District Sport and Rec Club has been up to for the past year and to welcome President Mike and the committee for another year, one of the most educational parts of their recent AGM was hearing from Ken Winshaw from the Maleny Observatory and Australasian Dark Sky Alliance.

Question: if there was a way to replace our street light bulbs with alternatives that maintained safety, lowered costs (because they're more efficient), benefitted the environment and human health and kept our skies "dark", would you support such moves? Seems like a "no brainer", doesn't it? Watch this space (no pun intended). Ken and I are looking to team up to encourage the Government to do just that.

The Great Walk for Parkinson's 2022

By the time you read this The Great Walk for Parkinson's 2022 will be done and dusted, and I'll likely be soaking in an ice bath. We are trekking from the Mapleton Day Use Area to Lake Baroon with an overnight at Flaxton Walkers Camp and it's all for a great cause. You can donate at www.the-great-walk.raisesly.com.

Have a safe Easter & avoid the Fatal Five

Rob Skelton
State Member for Nicklin
nicklin@parliament.qld.gov.au



I would like to take the opportunity to wish you and your family a safe and happy Easter.

I hope you have a chance find some time to spend with loved ones and reflect on what the holiday means to you.

If you're travelling over the holiday period, please take care on the roads and avoid the Fatal Five:

- speeding,
- driving under the influence of substances (drugs and/or alcohol),
- not wearing a seatbelt,
- driving whilst fatigued,
- driving while distracted.

The Queensland Police Service have launched their Operation Uniform Easter Road Safety Campaign, which will run throughout April.

You can expect to see police anywhere, anytime conducting roadside operations and patrolling our roads.

Please remember road safety is everyone's responsibility and plan your trip accordingly.

Take regular breaks, share the driving, ensure everyone is buckled up and drive to the conditions and speed limits.

Federal Budget disappoints

Local LNP MPs, Ted O'Brien, Llew O'Brien, and Andrew Wallace, have failed to deliver for residents of the Sunshine Coast and Mary Valley as the Federal government handed down it's pre-election budget last month.

There's no funding in the Budget to complete the full duplication of the North Coast Rail line through to Nambour, no funding to expand seating at Kawana Stadium as we approach the 2032 Olympics, nothing for social or public housing, rental or housing affordability, nothing for disaster mitigation projects, and no funding to fix the crisis in primary & allied healthcare.

They haven't even allocated any new funding to the Bruce Highway.

How many times must residents put up with being taken for granted by this tired and terminal Federal LNP government that has all but given up on governing.

Portia the beautiful, 400g bouncing baby possum



from **Donna Brennan** Wildlife Volunteers
WILVOS 5441 6200 www.wilvos.org.au

BACK in January a beautiful, tiny, furless brushtail possum came into care. Portia was the cutest little animal and I felt privileged to babysit her this week.

Nick has done an amazing job with all those 'round the clock' feeds and keeping the humidicrib at just the right temperature.

Now a 400 gram possum with a thick furry coat, Portia is doing all the things she needs to do in her progression to again living in the wild one day. She drinks her milk formula with gusto. During the night an amazing variety of leaves are eaten - eucalypt, banksia, syzygium, melaleuca, callistemons and grevilleas. A little bark to chew on and the odd scotch thistle and dandelion add to her diet.

Sadly, each year we see an increase in cases of exudative dermatitis (often referred to as stress dermatitis) in possums.

What was once a relatively rare occurrence has become just too common in the past decade. Habitat destruction appears to be a contributing factor for stress causing the problem.

Fortunately, members of the public will phone the WILVOS Hotline when concerned about injured or orphaned animals. We are able to set a trap and get the possum to a wildlife hospital as soon as possible. Usually they will go into the trap on the first night.

If treated early, the condition improves very quickly. Sometimes it is so advanced that euthanasia is the kindest option.

It is unbelievable how long these animals can live in the wild with horrific injuries. We are so appreciative of people calling us for help.

\$1.6 billion CAMCOS funding and SEQ City Steals

by **Jeffrey Addison**
Sunshine Coast Commuter Advocate



LAST week I had an article good to go for what I called the SEQ City Steal Deal.

It lamented the Brisbane-centric transport infrastructure projects listed in the City Deal struck between the Feds, the State and the SEQ Council of Mayors.

Not one rail infrastructure project was listed for us, and the only item for the Sunshine Coast out of \$1.788 billion on offer, was \$30 million for wetlands expansion along the Maroochy River catchment.

There was \$30 million for SEQ Rail Corridor Digital Connectivity along 'some' rail corridors that may be within our region. We need this as there are many communication 'dead spots' along the main North Coast Line between Brisbane and Gympie North.

That all changed on Monday 28 March, when I woke to news the Federal Government had \$1.6 billion on the table, in the budget, for 37km of Beerwah to Maroochy heavy rail, following the long-disused CAMCOS corridor.

It was to be matched 50/50 by the state.

I spoke to ABC radio Brisbane on Monday and ABC Sunshine Coast on Wednesday about what this meant and to respond to claims Transport Minister Mark Bailey was making about \$3.2 billion not being enough.

On 23 November last year Mark Bailey said it was "absolutely viable."

"We're also committed to the CAMCOS (Caboolture to Maroochy) heavy rail concept and have continued to preserve the corridor for a future rail link to Maroochy," he said.

But in the race towards an imminent federal election, opinions can swiftly change.

In doing research, I discovered a bomb-shell, in that the state allocated \$5 million towards construction of CAMCOS in the 2006-07 budget papers.

The South East Queensland Infrastructure Plan and Program (SEQIPP) 2005-2026 mentioned it. But that plan was removed and had to be obtained under a Right to Information (RTI) request, made in May 2020.

It's plain to see why they hid it.

This is what it said about CAMCOS:

Planning and acquisition for the CAMCOS rail corridor from Beerwah to Caloundra to Maroochy has been identified in the Infrastructure Plan as a priority for the 2005-06 to 2008-09 period, with construction to commence in the following period.

Thus work was to start 2009-10 to 2012-13.

Stopped dead in its tracks

CAMCOS is the second major rail project to the Sunshine Coast - that state Labor has stopped dead in its tracks.

Treasurer Cameron Dick called on the Federal Government to 'co-fund the state's disaster package rather than focus on "LNP seats on the Sunshine Coast."'

The Treasurer mustn't realise there are two Labor seats here, and one of them will have CAMCOS rail through the middle of it.

As for costings:

Redcliffe Peninsula line (2016) was \$1.0b for 12.6km = \$79.4 million/km. It included a road-bridge over the M1.

CAMCOS line (2022 estimate) was \$3.2b for 37km = \$86.5 million/km. It includes a 700m tunnel at Little Mountain.

That's in the ball park as a fair estimate.

Why does the State need to be dragged kicking and screaming to fund proper rail to our Sunshine Coast?

Crossword Solution

| | | | | | | | | | | | | |
|---|---|---|---|---|---|---|---|---|---|---|---|---|
| R | E | C | A | L | L | | A | D | O | R | N | |
| X | N | | A | B | O | V | E | | E | | | |
| M | U | S | T | | M | V | A | L | E | T | S | |
| | D | E | S | P | E | R | A | T | E | | I | |
| S | E | C | | N | | L | A | G | E | R | | |
| H | | R | E | S | T | S | | R | A | V | E | S |
| A | P | E | D | | S | A | D | | T | E | S | T |
| H | O | T | E | L | | P | E | T | E | R | | U |
| | R | E | N | E | W | | R | | | T | A | N |
| T | | T | A | R | N | I | S | H | E | D | | |
| D | E | B | A | S | E | | D | | E | D | A | M |
| R | | T | E | N | S | E | | L | G | | | |
| A | S | H | E | S | | D | A | P | P | E | R | |



Palmwoods Hotel est 1912

UPDATED MENU COMING SOON



EXPERIENCE THE LEGEND

28-34 MAIN STREET PALMWOODS | BOOKINGS ESSENTIAL | 1300 PALMWOODS | WWW.PALMWOODSHOTEL.COM.AU |

WIN UP TO \$500 IN FLIGHT CENTRE GIFT CARDS EVERY MINUTE

EXCLUSIVE TO **Bottlemart**

HAHN SUPER DRY 3.5
30 X 375ML CANS

\$51.99 EACH

PURCHASE A SPECIALLY MARKED 24 OR 30 PACK OF HAHN SUPER DRY AND ENTER ONLINE AT BOTTLEMART.COM.AU
TERMS & CONDITIONS APPLY. SEE WEBSITE FOR DETAILS.

START AT Bottlemart

BOTTLEMART.COM.AU

| | | | |
|--|---|---|---|
| <p>HAHN SUPER DRY 24 X 330ML BOTTLES</p> <p>\$47.99 EACH</p> | <p>XXXX GOLD 30 X 375ML CANS</p> <p>\$48.99 EACH</p> | <p>GREAT NORTHERN ORIGINAL 24 X 330ML BOTTLES OR 375ML CANS</p> <p>\$49.99 EACH</p> | <p>COOPERS PALE ALE 24 X 375ML BOTTLES</p> <p>\$52.99 EACH</p> |
| <p>TRULY HARD SELTZER 4 X 330ML CANS</p> <p>\$19.99 EACH</p> | <p>SUNTORY -196 DOUBLE LEMON 10 X 330ML CANS</p> <p>\$42.99 EACH</p> | <p>GORDON'S GIN, BACARDI CARTA BLANCA, BUNDEBERG UP RUM, CAPTAIN MORGAN SPICED GOLD, SMIRNOFF RED VODKA OR JOHNNIE WALKER RED LABEL SCOTCH WHISKY 700ML</p> <p>\$39.99 EACH</p> | <p>JIM BEAM WHITE LABEL BOURBON 1 LITRE</p> <p>\$52.99 EACH</p> <p>WIN A YETI ROADIE COOLER SPEND \$25 OR MORE ON ANY JIM BEAM PRODUCT AND ENTER ONLINE FOR YOUR CHANCE TO WIN. TERMS & CONDITIONS APPLY. SEE WEBSITE FOR DETAILS.</p> |
| <p>AMONGST THE CLOUDS WINES 750ML</p> <p>\$9.99 EACH</p> | <p>WYNNS COONAWARRA WINES (EXCLUDES BLACK LABEL) 750ML</p> <p>\$12.99 EACH</p> <p>BONUS WYNNS BBQ APRON WHEN YOU SPEND \$40 OR MORE ON WYNNS 750ML WINES. While stocks last.</p> | <p>PEPPERJACK WINES (EXCL. GRADED & SPARKLING) 750ML</p> <p>\$16.99 EACH</p> | <p>GRANT BURGE PINOT NOIR CHARDONNAY NV, YVES PREMIUM CUVÉE ROBERT OATLEY SIGNATURE SERIES CHARDONNAY OR GRENACHE 750ML</p> <p>\$19.99 EACH</p> |
| <p>JANSZ PREMIUM CUVÉE NV 750ML</p> <p>\$24.99 EACH</p> | | <p>BEERWAH CELLARS - BEERWAH SHOP 11, BEERWAH MARKETPLACE PEACHESTER RD TEL 5494 0477</p> <p>BEERWAH DRIVE THRU - BEERWAH MAWHINNEY STREET TEL 5494 0555</p> | |
| <p>GLASS HOUSE CELLARS - GLASS HOUSE MOUNTAIN SHOP 5, 9 BRUCE PARADE TEL 5493 0188</p> <p>MOOLOOLAH CELLARS - MOOLOOLAH SHOP 3, 2 JONES STREET TEL 5494 7320</p> | | <p>PALMWOODS CELLARS - PALMWOODS SHOP 5, 18-20 MARGARET STREET TEL 5445 9266</p> <p>PALMWOODS DRIVE THRU - PALMWOODS 28 MAIN STREET TEL 5445 9003</p> | |

CATALOGUE OUT NOW

All specials available from Wednesday 30th March until Tuesday 12th April 2022. Images are for illustrative purposes only. Specials available only in the state of Queensland. Prices may vary in country and far North Queensland. Different pack sizes and variants may not be available in all stores. Bottlemart supports the responsible service of alcohol.

| FOR SALE | NAMBOUR | FOR SALE | NAMBOUR | FOR SALE | PALMWOODS | FOR SALE | WEST WOOMBYE | FOR SALE | NAMBOUR |
|-----------------------------|---|---|--|--|-----------------------|----------|--------------|----------|---------|
| VACANT LAND |  |  |  |  | UNDER CONTRACT | | | | |
| | 1/47 CARTER ROAD | 10 TARONGA STREET | 30 MULLERS ROAD | 23 PETRIE CREEK | | | | | |
| 801m ² | 2  1  1  188m ² | 3  1  2  757m ² | 6  2  6  2021m ² | 3  1  1  1592m ² | | | | | |
| Peter Wrigley: 0407 374 349 | Peter Wrigley: 0407 374 349 | Andy Sharma: 0410 989 177 | Peter Wrigley: 0407 374 349 | Andy Sharma: 0410 989 177 | | | | | |

Nambour, we're growing with you!

A new era in Nambour real estate

Choose a real estate team that's excited and passionate about consistent growth in your local community.

Contact Tristan Brown on 0403 665 643.



RE/MAX Property Sales



[remaxpropertysalesandrentals](https://www.facebook.com/remaxpropertysalesandrentals) | 5470 7000 | www.remaxpropertysales.com.au

ROVER
RIDE-ON'S
ARE
BACK



North Coast MOWER CENTRE

 **\$2,999**
30" HYDRO FOOT MODEL \$3,499
30" ROVER MINI RIDER 13A726JD333
• 382CC ENGINE
• 30" STEEL CUTTING DECK
• 6 SPEED MANUAL OPERATION
• OPTIONAL MULCH KIT OR CATCHER
5 YEAR WARRANTY

 **SALE \$4,999**
RRP \$5,099
42" ROVER RIDE ON MOWER 13AGA1KS333
• 18HP V TWIN KAWASAKI ENGINE
• 42" STEEL CUTTING DECK
• HYDRO FOOT OPERATION
• ELECTRIC PTO BLADE OPERATION
• OPTIONAL MULCH KIT OR CATCHER
5 YEAR WARRANTY

 **SALE \$5,999**
RRP \$6,099
42" ROVER RIDE ON MOWER 13AFA4KS333
• 21V TWIN KAWASAKI ENGINE
• 42" STEEL CUTTING DECK
• ELECTRIC PTO
• AUTO DIFFERENTIAL LOCK
• HYDRO FOOT OPERATION
• BUMPER BAR
• OPTIONAL MULCH KIT OR CATCHER
5 YEAR WARRANTY

Ph: 07 5441 5455 | 36 Coronation Ave, Nambour
www.northcoastmowercentre.com

Mon - Fri: 8am - 5pm
Sat: 8am - 12pm